

# V&V Reference Report

## L2 ASCDS Version : 7.6.7.1

Observation 60065 - L2 Version 001  
Chandra X-Ray Center

L2 Processing Date : Apr 19 2006

## Contents

<b>1</b>	<b>Front</b>	<b>2</b>
<b>2</b>	<b>OBI</b>	<b>3</b>
2.1	OBI . . . . .	3
2.1.1	Images . . . . .	3
2.1.2	Bias . . . . .	3
2.1.3	Parameters . . . . .	4
2.1.4	Events . . . . .	4
2.2	Compared Parameters . . . . .	5
2.3	Aspect . . . . .	6
2.4	Star Slots . . . . .	8
2.5	FID Slots . . . . .	8
<b>A</b>	<b>Summary</b>	<b>9</b>
A.1	Status . . . . .	9
A.2	Comments . . . . .	9

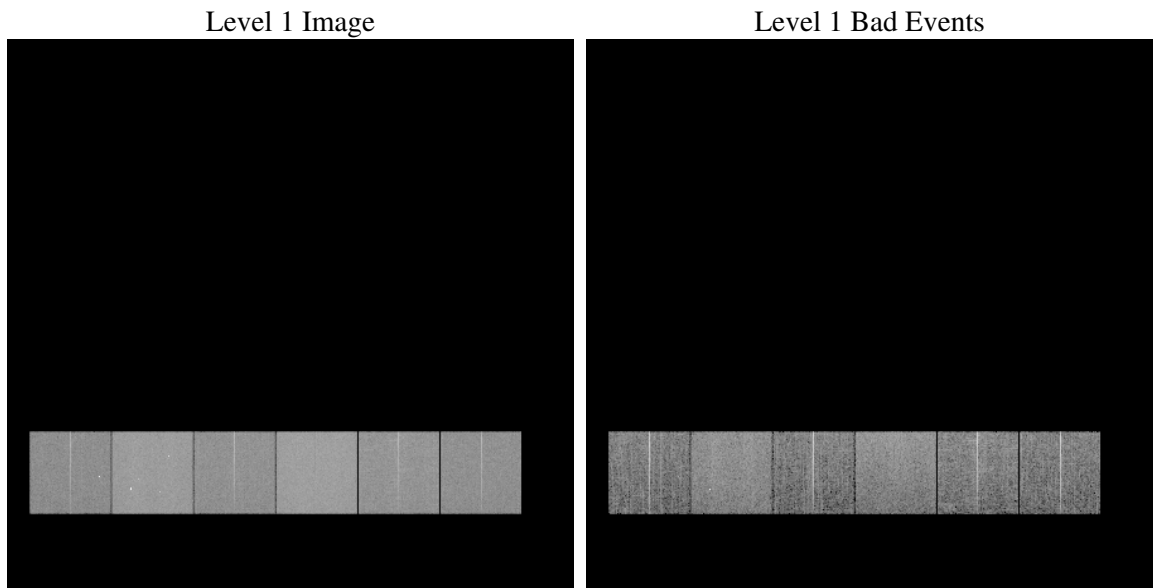
# 1 Front

seq_num	&#160
obs_id	60065
title	ACIS-456789 diagnostics
observer	CHANDRA engineering request/realtime commanding
object	&#160
dtcycle	0
cycle	P
ra_targ	0.0
dec_targ	0.0
ra_nom	230.01484498851
dec_nom	9.9758759300307
roll_nom	268.26896077754
revision	2
ontime	8220.7999693751
livetime	8116.7032501914
ontime4	5478.9444269538
ontime5	8220.7999693751
ontime6	5890.5479277372
ontime7	8220.7999693751
ontime8	6162.789070487
ontime9	5851.6562050283
l2events	1091439

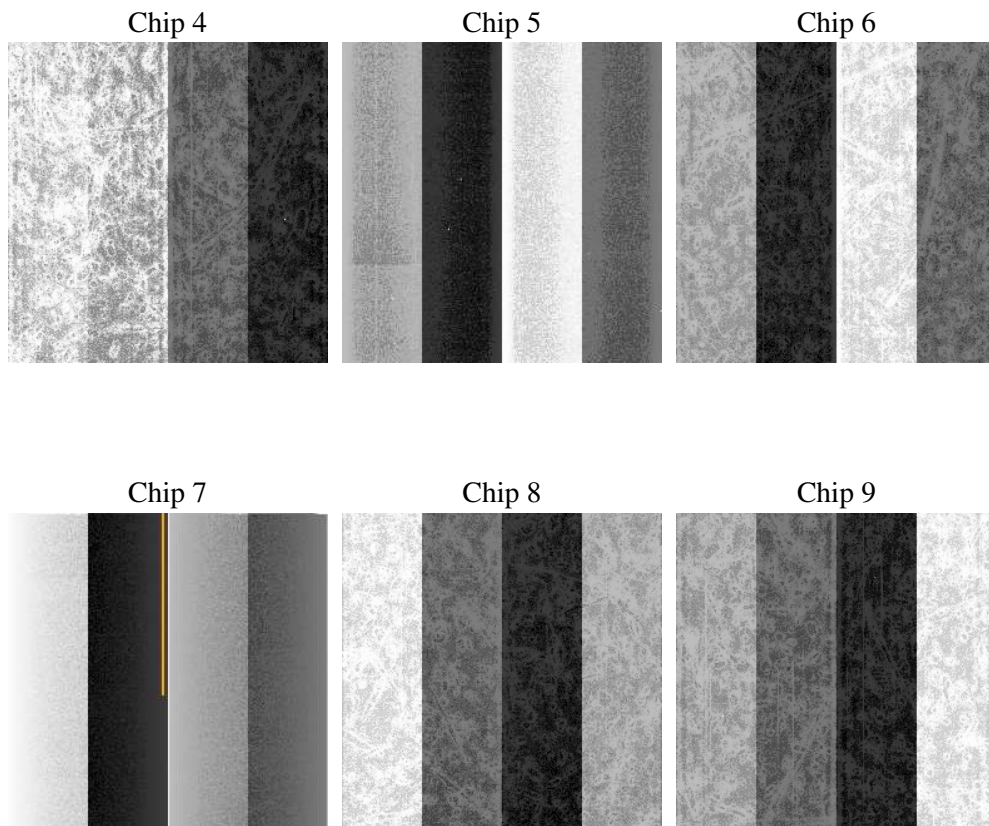
## 2 OBI

### 2.1 OBI

#### 2.1.1 Images



#### 2.1.2 Bias



### 2.1.3 Parameters

obi_num	0
ascdsver	7.6.7.1
caldsver	3.2.1
date	2006-04-19T19:40:03
revision	2

sched_exp_time	0.0
ontime	8277.5111489296
ontime4	5516.2098049223
ontime5	8277.5111489296
ontime6	5927.8132359684
ontime7	8277.5111489296
ontime8	6200.0544783771
ontime9	5892.1624835432
l1events	1497623

### 2.1.4 Events

	ccd 4	ccd 5	ccd 6	ccd 7	ccd 8	ccd 9
level 1 events	202392	295376	224675	314364	245164	215652
rejected events	49683	70406	49513	66883	55670	48639
rejected %	24%	23%	22%	21%	22%	22%

	ccd 4	ccd 5	ccd 6	ccd 7	ccd 8	ccd 9
grade 0 events	90139	21997	95346	40087	103369	93145
	44%	7%	42%	12%	42%	43%
grade 1 events	753	116	492	103	540	567
	0%	0%	0%	0%	0%	0%
grade 2 events	23119	106579	30893	76770	33371	28343
	11%	36%	13%	24%	13%	13%
grade 3 events	10331	6907	10758	17210	12336	10659
	5%	2%	4%	5%	5%	4%
grade 4 events	10364	6147	10933	16735	12373	10621
	5%	2%	4%	5%	5%	4%
grade 5 events	2667	6541	3007	7452	3729	3168
	1%	2%	1%	2%	1%	1%
grade 6 events	19717	84814	28280	98310	29174	25357
	9%	28%	12%	31%	11%	11%
grade 7 events	45302	62275	44966	57697	50272	43792
	22%	21%	20%	18%	20%	20%

## 2.2 Compared Parameters

Parameter	Planned	Actual	Parameter	Planned	Actual
Instrument	ACIS	ACIS	Obspar format version number	6	6
Detector	ACIS-456789	ACIS-456789	Obspar file type	PREDICTED	ACTUAL
Grating	NONE	NONE	Obspar update status	NONE	UPDATED
Data mode	FAINT	FAINT	On-chip summing requested	N	N
Observation mode	SECONDARY	SECONDARY	Subarray requested	NONE	NONE
Pointing RA	0	230.0148449885109	Alternating exposures requested	N	N
Pointing Dec	0	9.975875930030714	Primary exposure time	3.2	3.2
Pointing Roll	0.0	268.2689607775413			
SIM focus pos (mm)	-0.684267	-0.6828225247311905			
SIM defocus (mm)	0	0.8505141146731063			
SIM translation stage pos (mm)	-190.132523	250.466033080201			
SIM translation stage offset (mm)	0	-0.01005468664627074			
Observation start time	210904374.537761	210904373.51275			
Observation start date	2004-09-07T00:32:55	2004-09-07T00:32:53			
Observation end time	210926038.938727	210926037.91371			
Observation end date	2004-09-07T06:33:59	2004-09-07T06:33:57			
Read mode	TIMED	TIMED			

## 2.3 Aspect



## 2.4 Star Slots

## 2.5 FID Slots

## A Summary

### A.1 Status

V&V Scientist	Beth Sundheim
V&V Date (YYYY-MM-DD)	2006.04.19
V&V Edition	1
V&V Disposition and Status	OK
V&V Charge Time	8.22079996

### A.2 Comments

Focal plane temperature is elevated during entire observation.