

V&V Reference Report

L2 ASCDS Version : 7.6.7.1

Observation 60037 - L2 Version 001
Chandra X-Ray Center

L2 Processing Date : Apr 17 2006

Contents

1	Front	2
2	OBI	3
2.1	OBI	3
2.1.1	Images	3
2.1.2	Bias	3
2.1.3	Parameters	4
2.1.4	Events	4
2.2	Compared Parameters	5
2.3	Aspect	6
2.4	Star Slots	8
2.5	FID Slots	8
A	Summary	9
A.1	Status	9
A.2	Comments	9

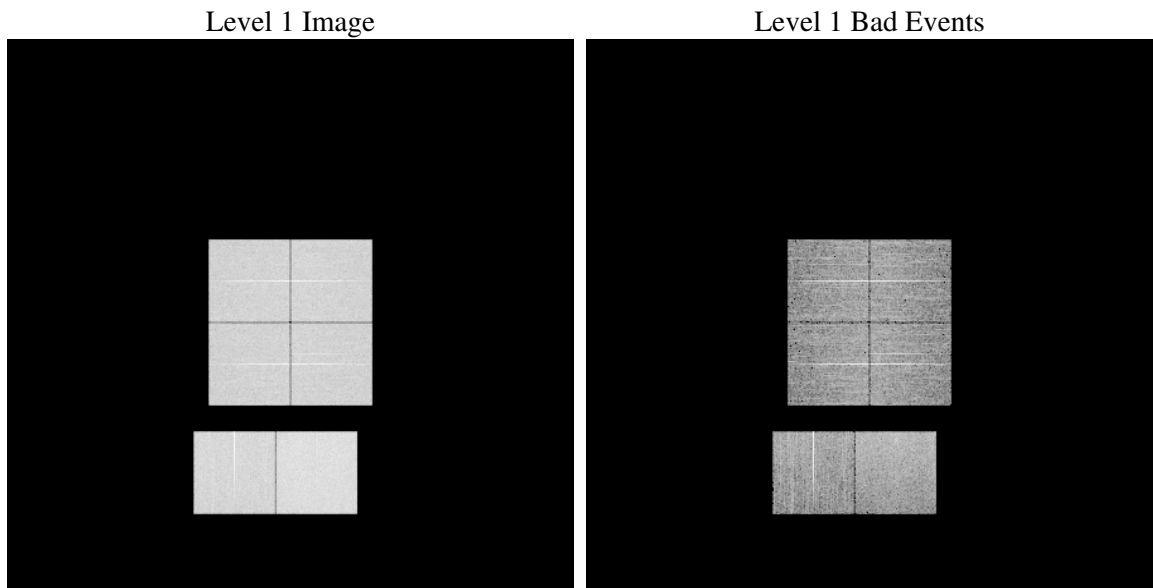
1 Front

seq_num	
obs_id	60037
title	ACIS-012367 diagnostics
observer	CHANDRA engineering request/realtime commanding
object	
dtcycle	0
cycle	P
ra_targ	0.0
dec_targ	0.0
ra_nom	250.00737165925
dec_nom	-14.02525787862
roll_nom	264.64078537897
revision	2
ontime	8279.9678277373
livetime	8175.1218895045
ontime0	6695.1782068908
ontime1	6841.0621205568
ontime2	6481.3564484417
ontime3	6497.3972495198
ontime6	7100.4217215478
ontime7	8279.9678277373
l2events	1145014

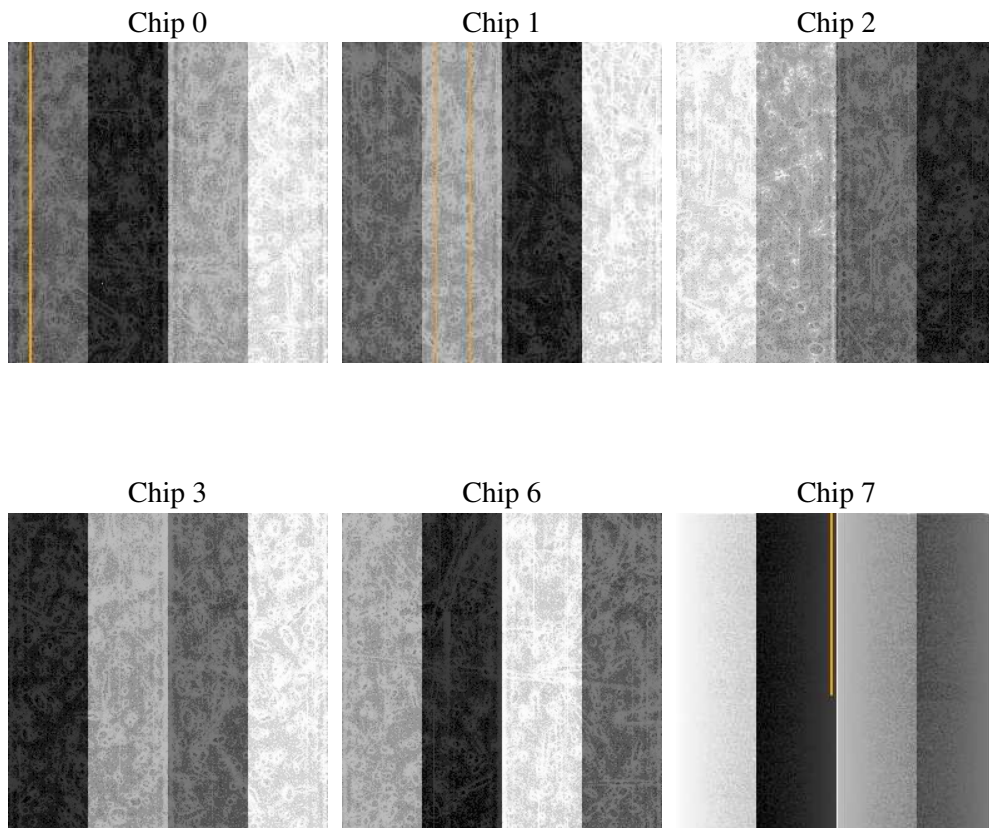
2 OBI

2.1 OBI

2.1.1 Images



2.1.2 Bias



2.1.3 Parameters

obi_num	1
ascdsver	7.6.7.1
caldbver	3.2.1
date	2006-04-18T01:09:57
revision	2

sched_exp_time	0.0
ontime	8280.7552199066
ontime0	6695.9245590568
ontime1	6841.7674327195
ontime2	6482.0207206011
ontime3	6498.2256816924
ontime6	7101.0449537337
ontime7	8280.7552199066
l1events	1498225

2.1.4 Events

	ccd 0	ccd 1	ccd 2	ccd 3	ccd 6	ccd 7
level 1 events	233637	237700	229626	232258	259404	305600
rejected events	45682	45576	46192	47415	50755	60219
rejected %	19%	19%	20%	20%	19%	19%

	ccd 0	ccd 1	ccd 2	ccd 3	ccd 6	ccd 7
grade 0 events	103397	105189	103023	104036	113168	41417
	44%	44%	44%	44%	43%	13%
grade 1 events	580	522	618	651	557	116
	0%	0%	0%	0%	0%	0%
grade 2 events	32881	34538	30565	31122	36074	75310
	14%	14%	13%	13%	13%	24%
grade 3 events	12289	12006	12102	12144	12989	17133
	5%	5%	5%	5%	5%	5%
grade 4 events	12129	12163	11941	12171	12729	16840
	5%	5%	5%	5%	4%	5%
grade 5 events	2828	2902	2681	3134	3369	7070
	1%	1%	1%	1%	1%	2%
grade 6 events	27259	28228	25803	25370	33689	94681
	11%	11%	11%	10%	12%	30%
grade 7 events	42274	42152	42893	43630	46829	53033
	18%	17%	18%	18%	18%	17%

2.2 Compared Parameters

Parameter	Planned	Actual	Parameter	Planned	Actual
Instrument	ACIS	ACIS	Obspar format version number	6	6
Detector	ACIS-012367	ACIS-012367	Obspar file type	PREDICTED	ACTUAL
Grating	NONE	NONE	Obspar update status	NONE	UPDATED
Data mode	FAINT	FAINT	On-chip summing requested	N	N
Observation mode	SECONDARY	SECONDARY	Subarray requested	NONE	NONE
Pointing RA	0	250.0073716592476	Alternating exposures requested	N	N
Pointing Dec	0	-14.02525787861952	Primary exposure time	3.2	3.2
Pointing Roll	0.0	264.6407853789701			
SIM focus pos (mm)	-0.782348	-0.7809083437167272			
SIM defocus (mm)	0	0.7524282956875696			
SIM translation stage pos (mm)	-233.592463	250.466033080201			
SIM translation stage offset (mm)	0	-0.01005468664627074			
Observation start time	212042489.488568	212042488.46355			
Observation start date	2004-09-20T04:41:29	2004-09-20T04:41:28			
Observation end time	212066222.33963	212066221.31461			
Observation end date	2004-09-20T11:17:02	2004-09-20T11:17:01			
Read mode	TIMED	TIMED			

2.3 Aspect

2.4 Star Slots

2.5 FID Slots

A Summary

A.1 Status

V&V Scientist	Jen Lauer
V&V Date (YYYY-MM-DD)	2006.04.18
V&V Edition	1
V&V Disposition and Status	OK
V&V Charge Time	8.27996782

A.2 Comments