

# V&V Reference Report

## L2 ASCDS Version : 7.6.7.1

Observation 60024 - L2 Version <sub>e</sub>1  
Chandra X-Ray Center

L2 Processing Date : Apr 17 2006

## Contents

<b>1</b>	<b>Front</b>	<b>2</b>
<b>2</b>	<b>OBI Primary</b>	<b>3</b>
2.1	OBI . . . . .	3
2.1.1	Images . . . . .	3
2.1.2	Bias . . . . .	3
2.1.3	Parameters . . . . .	4
2.1.4	Events . . . . .	4
2.2	Compared Parameters . . . . .	5
2.3	Aspect . . . . .	6
2.4	Star Slots . . . . .	8
2.5	FID Slots . . . . .	8
<b>3</b>	<b>OBI Secondary</b>	<b>8</b>
3.1	OBI . . . . .	8
3.1.1	Images . . . . .	8
3.1.2	Bias . . . . .	8
3.1.3	Parameters . . . . .	9
3.1.4	Events . . . . .	9
<b>A</b>	<b>Summary</b>	<b>10</b>
A.1	Status . . . . .	10
A.2	Comments . . . . .	10

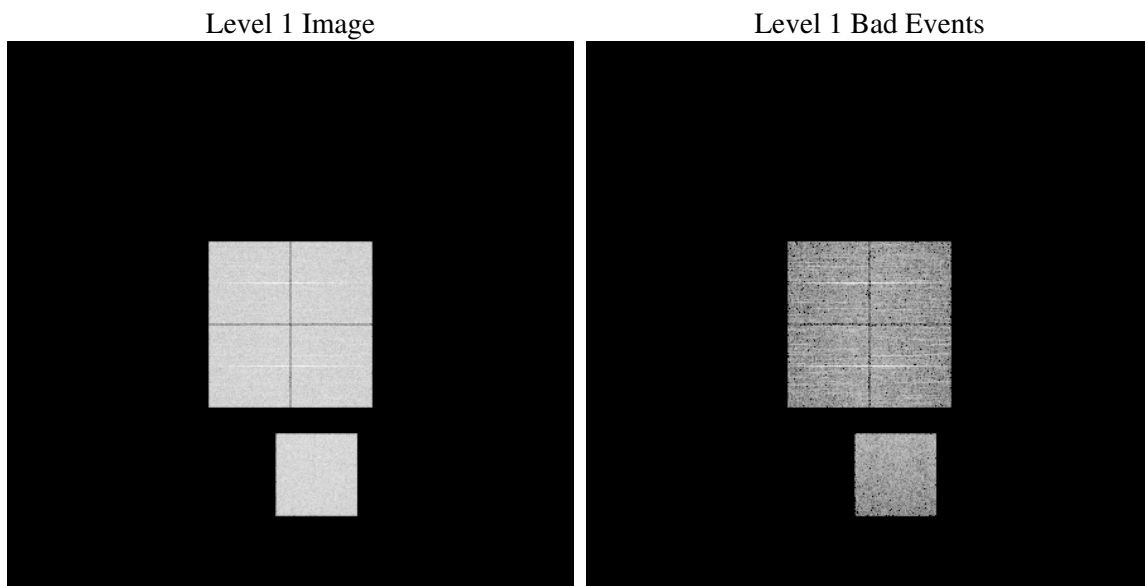
# 1 Front

seq_num	&#160
obs_id	60024
title	ACIS-01237 diagnostics
observer	CHANDRA engineering request/realtime commanding
object	&#160
dtcycle	0
cycle	P
ra_targ	0.0
dec_targ	0.0
ra_nom	8.9872424168466
dec_nom	16.991806632042
roll_nom	171.18652724986
revision	2
ontime	4382.1815897226
livetime	4337.6770234619
ontime0	4382.3457497358
ontime1	4382.3047097325
ontime2	4382.2636697292
ontime3	4382.2226297259
ontime7	4382.1815897226
l2events	587726

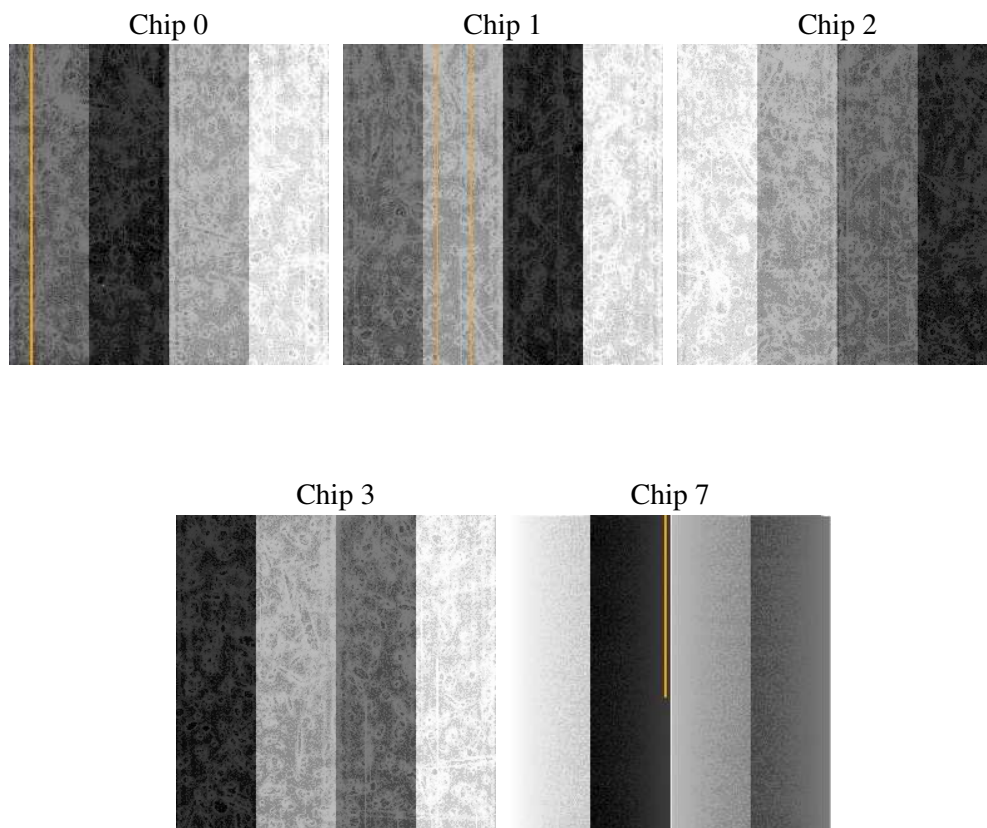
## 2 OBI Primary

### 2.1 OBI

#### 2.1.1 Images



#### 2.1.2 Bias



### 2.1.3 Parameters

obi_num	0
ascdsver	7.6.7.1
caldbver	3.2.1
date	2006-04-17T02:18:20
revision	2

sched_exp_time	0.0
ontime	4384.5284035802
ontime0	4384.5284035802
ontime1	4384.5284035802
ontime2	4384.5284035802
ontime3	4384.5284035802
ontime7	4384.5284035802
llevents	766700

### 2.1.4 Events

	ccd 0	ccd 1	ccd 2	ccd 3	ccd 7
level 1 events	149609	149376	153706	153909	160100
rejected events	28338	28781	31137	30949	29254
rejected %	18%	19%	20%	20%	18%

	ccd 0	ccd 1	ccd 2	ccd 3	ccd 7
grade 0 events	66955	65973	68083	68815	23514
	44%	44%	44%	44%	14%
grade 1 events	406	424	507	470	74
	0%	0%	0%	0%	0%
grade 2 events	21402	21534	20888	21045	39122
	14%	14%	13%	13%	24%
grade 3 events	7717	7787	8058	8020	9726
	5%	5%	5%	5%	6%
grade 4 events	7791	7695	8090	8207	9678
	5%	5%	5%	5%	6%
grade 5 events	1930	2031	1852	2018	3855
	1%	1%	1%	1%	2%
grade 6 events	17515	17724	17565	16986	48911
	11%	11%	11%	11%	30%
grade 7 events	25893	26208	28663	28348	25220
	17%	17%	18%	18%	15%

## 2.2 Compared Parameters

Parameter	Planned	Actual	Parameter	Planned	Actual
Instrument	ACIS	ACIS	Obspar format version number	6	6
Detector	ACIS-01237	ACIS-01237	Obspar file type	PREDICTED	ACTUAL
Grating	NONE	NONE	Obspar update status	NONE	UPDATED
Data mode	FAINT	FAINT	On-chip summing requested	N	N
Observation mode	SECONDARY	SECONDARY	Subarray requested	NONE	NONE
Pointing RA	0	8.987242416846637	Alternating exposures requested	Y	Y
Pointing Dec	0	16.99180663204163	Primary exposure time	4	4
Pointing Roll	0.0	171.186527249864	Secondary exposure time	3.2	3.2
SIM focus pos (mm)	-0.782348	-0.6828225247311905	Duty cycle	1	1
SIM defocus (mm)	0	0.8505141146731063			
SIM translation stage pos (mm)	-233.592463	250.466033080201			
SIM translation stage offset (mm)	0	-0.01005468664627074			
Observation start time	212920764.877838	212920763.85281			
Observation start date	2004-09-30T08:39:25	2004-09-30T08:39:23			
Observation end time	212935022.628477	212935021.60345			
Observation end date	2004-09-30T12:37:03	2004-09-30T12:37:01			
Read mode	TIMED	TIMED			

## 2.3 Aspect



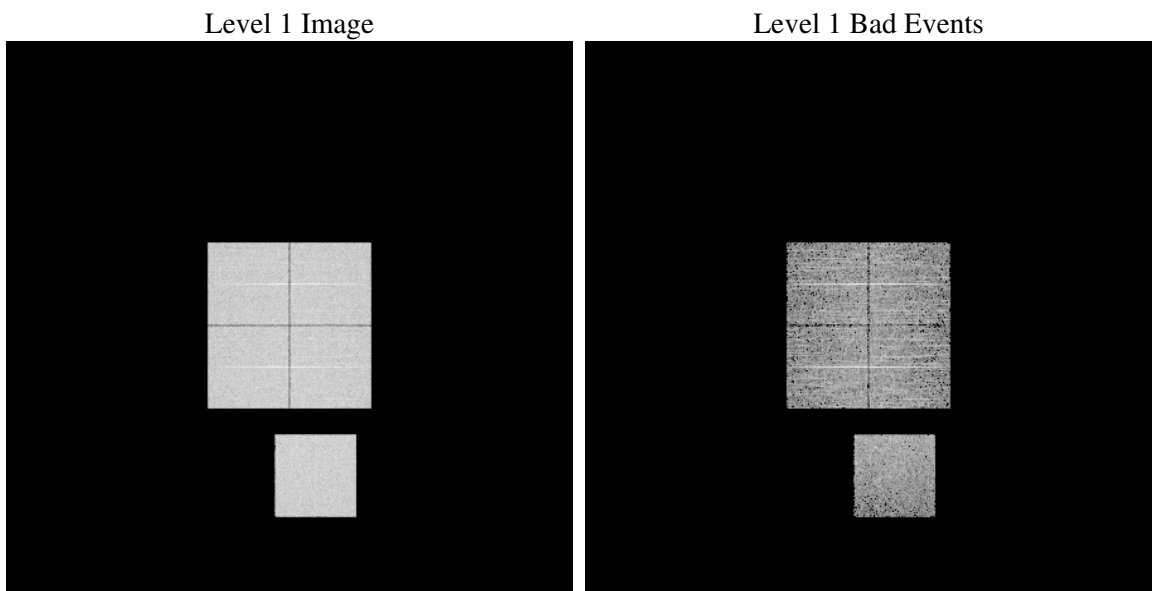
## 2.4 Star Slots

## 2.5 FID Slots

# 3 OBI Secondary

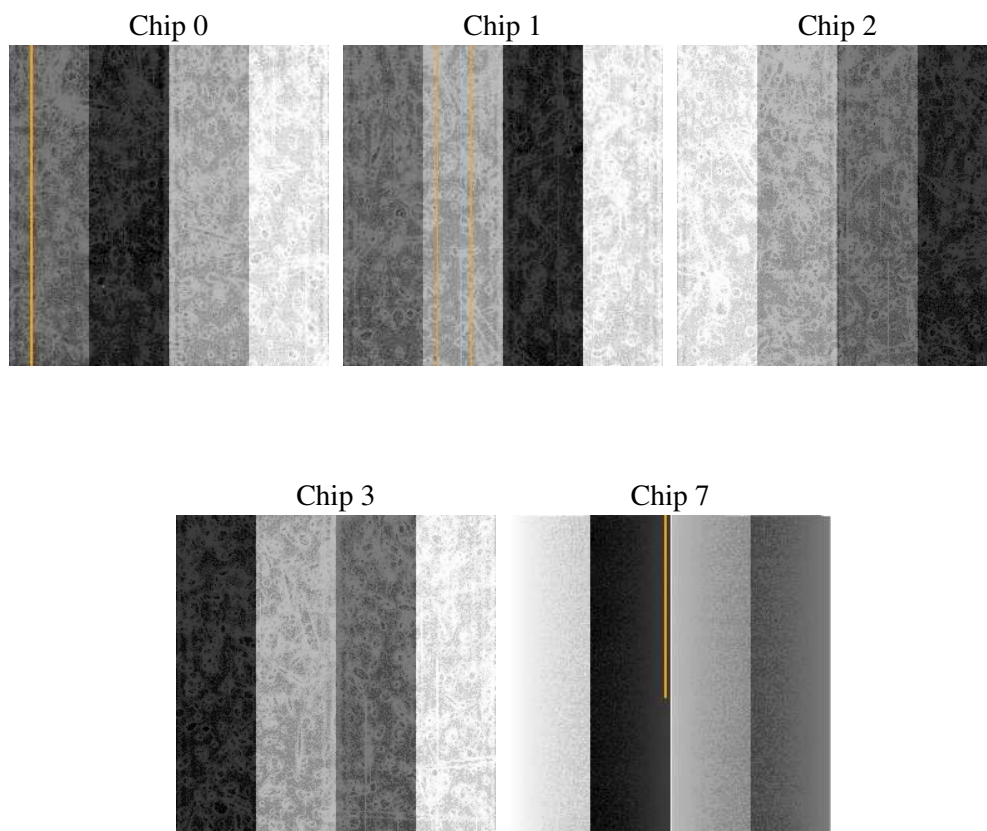
## 3.1 OBI

### 3.1.1 Images



### 3.1.2 Bias





### 3.1.3 Parameters

obi_num	0
ascdsver	7.6.7.1
caldsver	3.2.1
date	2006-04-17T02:17:02
revision	2

sched_exp_time	0.0
ontime	3519.7694306374
ontime0	3516.528390646
ontime1	3519.7694306374
ontime2	3519.7694306374
ontime3	3519.7694306374
ontime7	3519.7694306374
l1events	627619

### 3.1.4 Events

	ccd 0	ccd 1	ccd 2	ccd 3	ccd 7
level 1 events	122367	123178	125072	126373	130629
rejected events	24756	25285	26387	26873	25309
rejected %	20%	20%	21%	21%	19%

	ccd 0	ccd 1	ccd 2	ccd 3	ccd 7
grade 0 events	53492	53666	55294	55859	18621
	43%	43%	44%	44%	14%
grade 1 events	322	292	389	323	43
	0%	0%	0%	0%	0%
grade 2 events	17120	17380	16681	16966	31384
	13%	14%	13%	13%	24%
grade 3 events	6419	6312	6419	6473	7817
	5%	5%	5%	5%	5%
grade 4 events	6522	6227	6544	6541	7699
	5%	5%	5%	5%	5%
grade 5 events	1563	1579	1516	1695	3205
	1%	1%	1%	1%	2%
grade 6 events	14154	14403	13846	13753	39908
	11%	11%	11%	10%	30%
grade 7 events	22775	23319	24383	24763	21952
	18%	18%	19%	19%	16%

## A Summary

### A.1 Status

V&V Scientist	Jen Lauer
V&V Date (YYYY-MM-DD)	2006.04.17
V&V Edition	1
V&V Disposition and Status	OK
V&V Charge Time	7.89870998

### A.2 Comments