

# V&V Reference Report

## L2 ASCDS Version : 7.6.7.1

Observation 60017 - L2 Version 001  
Chandra X-Ray Center

L2 Processing Date : Apr 17 2006

## Contents

<b>1</b>	<b>Front</b>	<b>2</b>
<b>2</b>	<b>OBI</b>	<b>3</b>
2.1	OBI . . . . .	3
2.1.1	Images . . . . .	3
2.1.2	Bias . . . . .	3
2.1.3	Parameters . . . . .	4
2.1.4	Events . . . . .	4
2.2	Compared Parameters . . . . .	5
2.3	Aspect . . . . .	6
2.4	Star Slots . . . . .	8
2.5	FID Slots . . . . .	8
<b>A</b>	<b>Summary</b>	<b>9</b>
A.1	Status . . . . .	9
A.2	Comments . . . . .	9

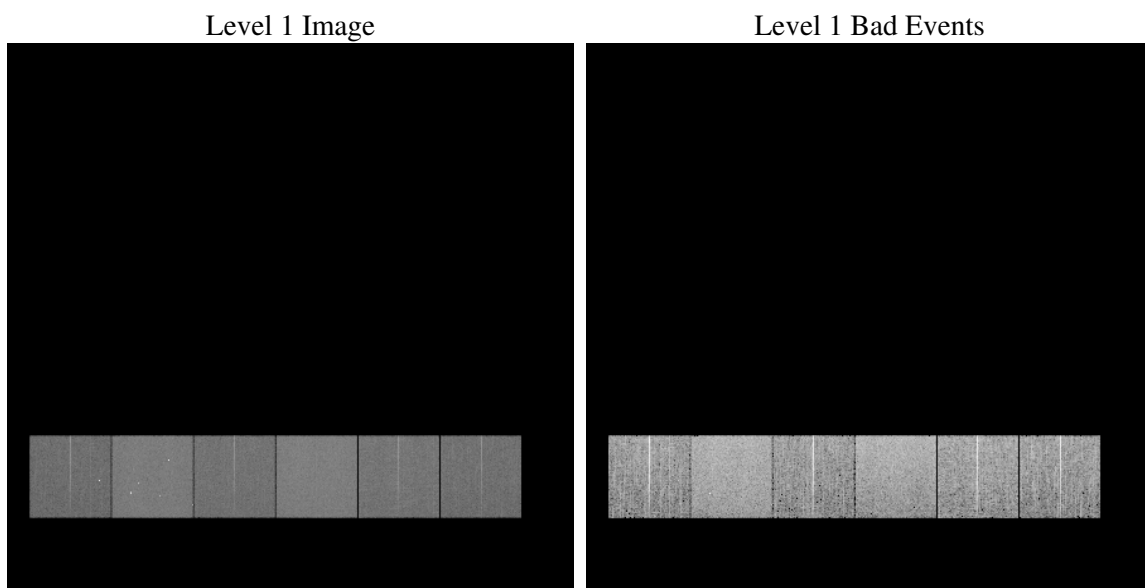
# 1 Front

seq_num	&#160
obs_id	60017
title	ACIS-456789 diagnostics
observer	CHANDRA engineering request/realtime commanding
object	&#160
dtcycle	0
cycle	P
ra_targ	0.0
dec_targ	0.0
ra_nom	21.023836398396
dec_nom	-33.97728799044
roll_nom	14.740260836997
revision	2
ontime	7796.6972406805
livetime	7697.9707656115
ontime4	5304.5046975613
ontime5	7796.7382806838
ontime6	5835.9861058891
ontime7	7796.6972406805
ontime8	5959.2247619331
ontime9	5605.7525114715
l2events	1037208

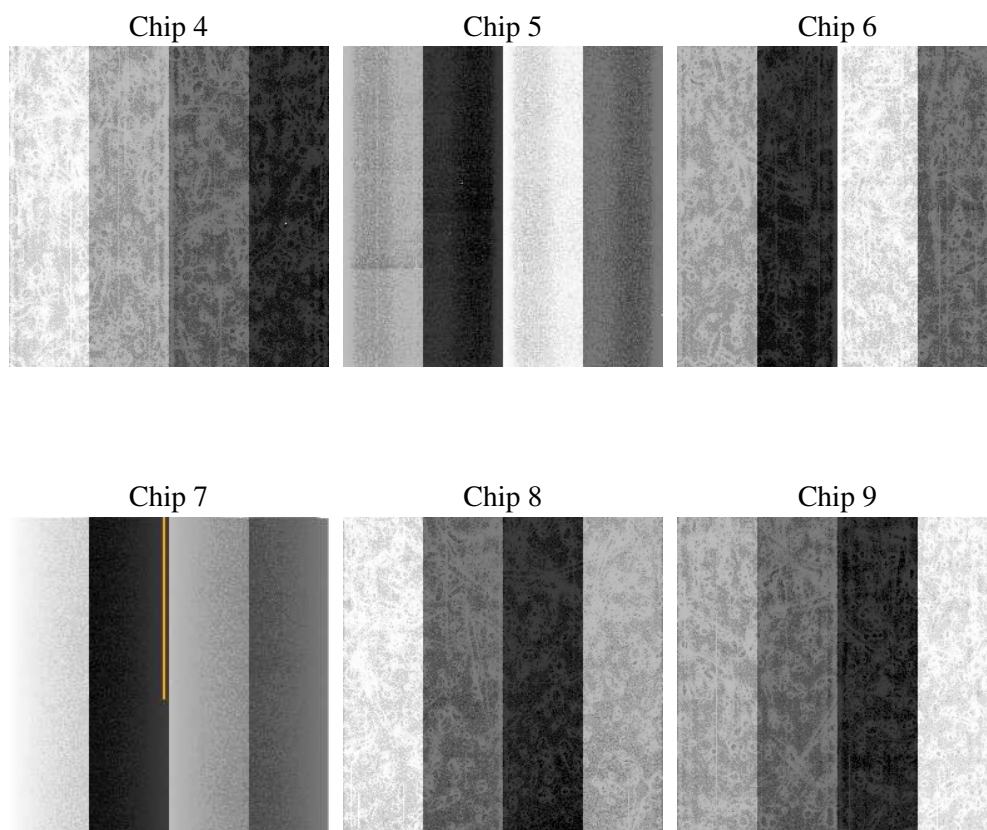
## 2 OBI

### 2.1 OBI

#### 2.1.1 Images



#### 2.1.2 Bias



### 2.1.3 Parameters

obi_num	0
ascdsver	7.6.7.1
caldsver	3.2.1
date	2006-04-17T05:32:12
revision	2

sched_exp_time	0.0
ontime	7797.8681882918
ontime4	5305.5525251627
ontime5	7797.8681882918
ontime6	5837.0749734938
ontime7	7797.8681882918
ontime8	5960.231549561
ontime9	5606.9644990861
l1events	1411832

### 2.1.4 Events

	ccd 4	ccd 5	ccd 6	ccd 7	ccd 8	ccd 9
level 1 events	190180	278533	215510	292681	231797	203131
rejected events	45484	62708	44214	58938	51969	45842
rejected %	23%	22%	20%	20%	22%	22%

	ccd 4	ccd 5	ccd 6	ccd 7	ccd 8	ccd 9
grade 0 events	83995	27811	92782	40690	97526	86539
	44%	9%	43%	13%	42%	42%
grade 1 events	665	261	487	112	566	562
	0%	0%	0%	0%	0%	0%
grade 2 events	23031	98393	29934	70053	31717	27028
	12%	35%	13%	23%	13%	13%
grade 3 events	9607	7141	10752	16997	11706	10258
	5%	2%	4%	5%	5%	5%
grade 4 events	9428	6953	10583	16793	11555	10071
	4%	2%	4%	5%	4%	4%
grade 5 events	2552	6294	2914	6939	3585	3047
	1%	2%	1%	2%	1%	1%
grade 6 events	18635	75527	27245	89210	27324	23393
	9%	27%	12%	30%	11%	11%
grade 7 events	42267	56153	40813	51887	47818	42233
	22%	20%	18%	17%	20%	20%

## 2.2 Compared Parameters

Parameter	Planned	Actual	Parameter	Planned	Actual
Instrument	ACIS	ACIS	Obspar format version number	6	6
Detector	ACIS-456789	ACIS-456789	Obspar file type	PREDICTED	ACTUAL
Grating	NONE	NONE	Obspar update status	NONE	UPDATED
Data mode	FAINT	FAINT	On-chip summing requested	N	N
Observation mode	SECONDARY	SECONDARY	Subarray requested	NONE	NONE
Pointing RA	0	21.02383639839567	Alternating exposures requested	N	N
Pointing Dec	0	-33.97728799043991	Primary exposure time	3.2	3.2
Pointing Roll	0.0	14.74026083699711			
SIM focus pos (mm)	-0.684267	-0.6828225247311905			
SIM defocus (mm)	0	0.8505141146731063			
SIM translation stage pos (mm)	-190.132523	250.466033080201			
SIM translation stage offset (mm)	0	-0.01005468664627074			
Observation start time	213375725.498136	213375724.47314			
Observation start date	2004-10-05T15:02:05	2004-10-05T15:02:04			
Observation end time	213426706.950413	213426705.92542			
Observation end date	2004-10-06T05:11:47	2004-10-06T05:11:45			
Read mode	TIMED	TIMED			

## 2.3 Aspect



## **2.4 Star Slots**

## **2.5 FID Slots**



## A Summary

### A.1 Status

V&V Scientist	Jen Lauer
V&V Date (YYYY-MM-DD)	2006.04.17
V&V Edition	1
V&V Disposition and Status	OK
V&V Charge Time	7.79669724

### A.2 Comments