

V&V Reference Report

L2 ASCDS Version : 7.6.7.1

Observation 59999 - L2 Version 001
Chandra X-Ray Center

L2 Processing Date : Apr 15 2006

Contents

1	Front	2
2	OBI	3
2.1	OBI	3
2.1.1	Images	3
2.1.2	Bias	3
2.1.3	Parameters	4
2.1.4	Events	4
2.2	Compared Parameters	5
2.3	Aspect	6
2.4	Star Slots	8
2.5	FID Slots	8
A	Summary	9
A.1	Status	9
A.2	Comments	9

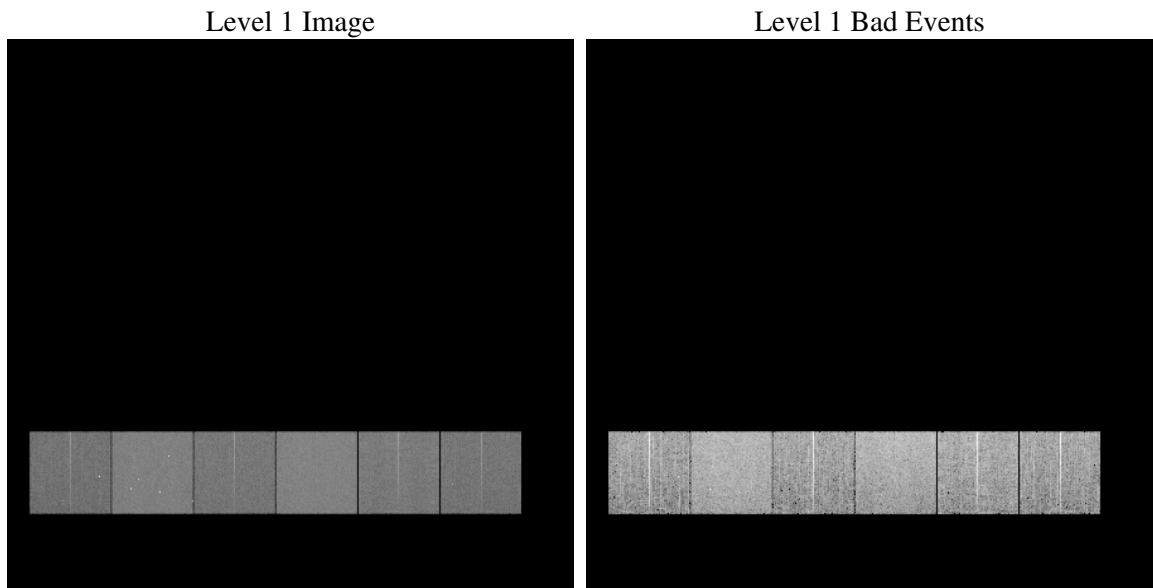
1 Front

seq_num	
obs_id	59999
title	ACIS-456789 diagnostics
observer	CHANDRA engineering request/realtime commanding
object	
dtcycle	0
cycle	P
ra_targ	0.0
dec_targ	0.0
ra_nom	21.028650607994
dec_nom	4.2022771902052
roll_nom	331.30591733585
revision	2
ontime	7603.1999716759
livetime	7506.9236755371
ontime4	5240.5306365192
ontime5	7603.1999716759
ontime6	5735.3302709758
ontime7	7603.1999716759
ontime8	5940.5811356902
ontime9	5522.4952504933
l2events	1004836

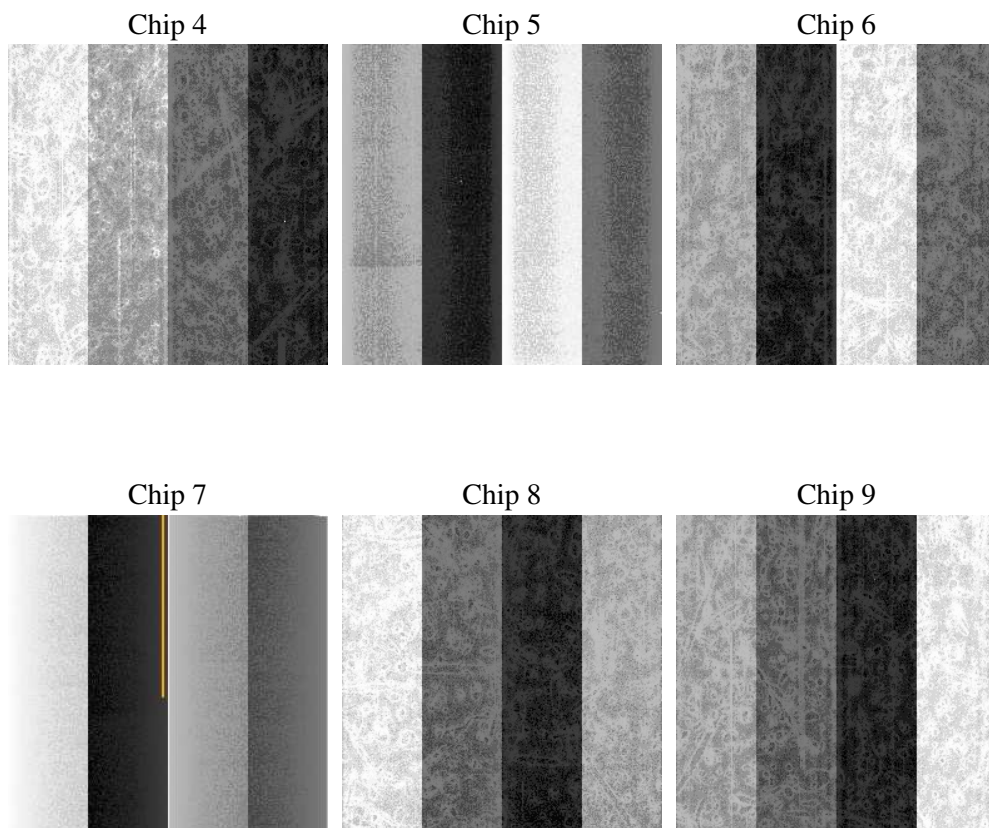
2 OBI

2.1 OBI

2.1.1 Images



2.1.2 Bias



2.1.3 Parameters

obi_num	0
ascdsver	7.6.7.1
caldsver	3.2.1
date	2006-04-15T19:08:27
revision	2

sched_exp_time	0.0
ontime	7687.6626237631
ontime4	5302.3064865768
ontime5	7687.6626237631
ontime6	5794.9346982539
ontime7	7687.6626237631
ontime8	6012.0798866451
ontime9	5584.2710707486
l1events	1392255

2.1.4 Events

	ccd 4	ccd 5	ccd 6	ccd 7	ccd 8	ccd 9
level 1 events	187465	272499	212909	287293	230949	201140
rejected events	46803	65200	47560	62090	54590	47565
rejected %	24%	23%	22%	21%	23%	23%

	ccd 4	ccd 5	ccd 6	ccd 7	ccd 8	ccd 9
grade 0 events	82567	24870	90447	38337	96000	85362
	44%	9%	42%	13%	41%	42%
grade 1 events	671	121	484	126	524	561
	0%	0%	0%	0%	0%	0%
grade 2 events	22707	96543	28840	68896	31649	26741
	12%	35%	13%	23%	13%	13%
grade 3 events	9514	6334	10648	16133	11823	10033
	5%	2%	5%	5%	5%	4%
grade 4 events	9468	6334	10406	15825	11766	9903
	5%	2%	4%	5%	5%	4%
grade 5 events	2617	6130	2850	6960	3671	3140
	1%	2%	1%	2%	1%	1%
grade 6 events	18052	75496	26683	88472	27306	23269
	9%	27%	12%	30%	11%	11%
grade 7 events	41869	56671	42551	52544	48210	42131
	22%	20%	19%	18%	20%	20%

2.2 Compared Parameters

Parameter	Planned	Actual	Parameter	Planned	Actual
Instrument	ACIS	ACIS	Obspar format version number	6	6
Detector	ACIS-456789	ACIS-456789	Obspar file type	PREDICTED	ACTUAL
Grating	NONE	NONE	Obspar update status	NONE	UPDATED
Data mode	FAINT	FAINT	On-chip summing requested	N	N
Observation mode	SECONDARY	SECONDARY	Subarray requested	NONE	NONE
Pointing RA	0	21.02865060799354	Alternating exposures requested	N	N
Pointing Dec	0	4.202277190205208	Primary exposure time	3.2	3.2
Pointing Roll	0.0	331.3059173358477			
SIM focus pos (mm)	-0.684267	-0.6828225247311905			
SIM defocus (mm)	0	0.8505141146731063			
SIM translation stage pos (mm)	-190.132523	250.4635187648994			
SIM translation stage offset (mm)	0	-0.007540371344731511			
Observation start time	214556002.800911	214556001.77591			
Observation start date	2004-10-19T06:53:23	2004-10-19T06:53:21			
Observation end time	214576767.25184	214576766.22684			
Observation end date	2004-10-19T12:39:27	2004-10-19T12:39:26			
Read mode	TIMED	TIMED			

2.3 Aspect

2.4 Star Slots

2.5 FID Slots

A Summary

A.1 Status

V&V Scientist	Beth Sundheim
V&V Date (YYYY-MM-DD)	2006.04.16
V&V Edition	1
V&V Disposition and Status	OK
V&V Charge Time	7.60319997

A.2 Comments