

V&V Reference Report

L2 ASCDS Version : 8.5

Observation 59994 - L2 Version 3
Chandra X-Ray Center

L2 Processing Date : Dec 10 2012

Contents

1	Front	2
2	OBI	3
2.1	OBI	3
2.1.1	Images	3
2.1.2	Bias	3
2.1.3	Parameters	4
2.1.4	Events	4
2.2	Compared Parameters	5
2.3	Star Slots	6
2.4	FID Slots	6
A	Summary	7
A.1	Status	7
A.2	Comments	7

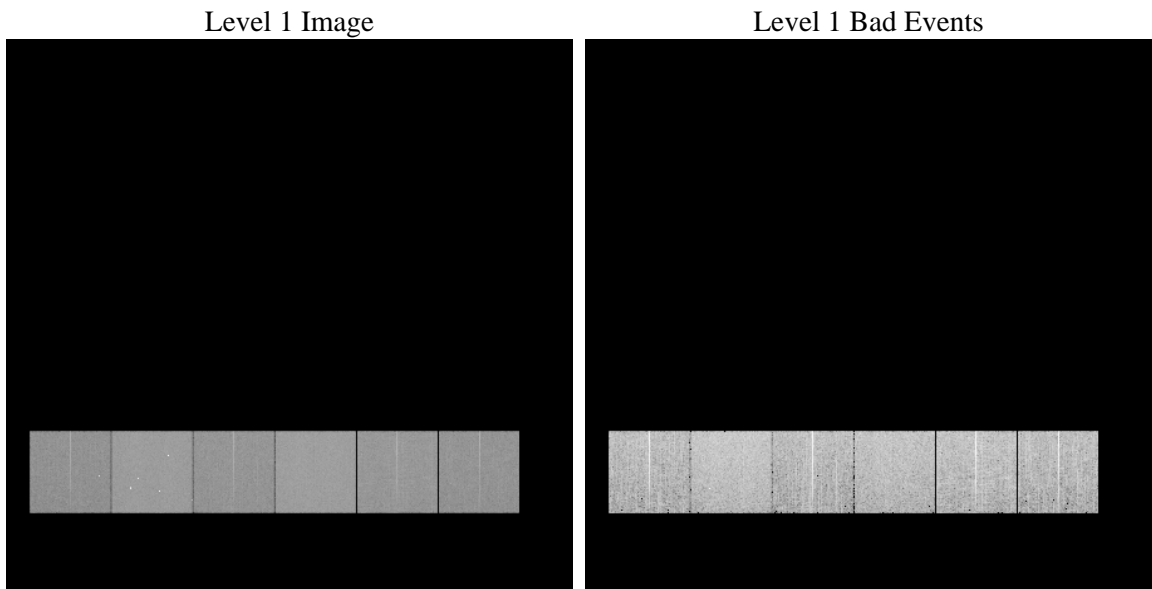
1 Front

seq_num	 	Sequence number
obs_id	59994	Observation id
title	ACIS-456789 diagnostics	Proposal title
observer	CHANDRA engineering request/realtime commanding	Principal investig
object	 	Source name
dtcycle	0	
cycle	P	events from which exps? Prim/Second/Both
ra_targ	0.0	Observer's specified target RA [deg]
dec_targ	0.0	Observer's specified target Dec [deg]
ra_nom	25.027867887758	Nominal RA [deg]
dec_nom	1.0067561535548	Nominal Dec [deg]
roll_nom	340.75905708649	Nominal Roll [deg]
revision	3	Processing version of data
ontime	7797.865219146	Sum of GTIs [s]
livetime	7699.1239544305	Livetime [s]
ontime4	5279.6232240498	Sum of GTIs [s]
ontime5	7797.865219146	Sum of GTIs [s]
ontime6	5769.000279814	Sum of GTIs [s]
ontime7	7797.865219146	Sum of GTIs [s]
ontime8	6131.9081202447	Sum of GTIs [s]
ontime9	5649.0961404741	Sum of GTIs [s]
l2events	1040011	Number of level 2 events

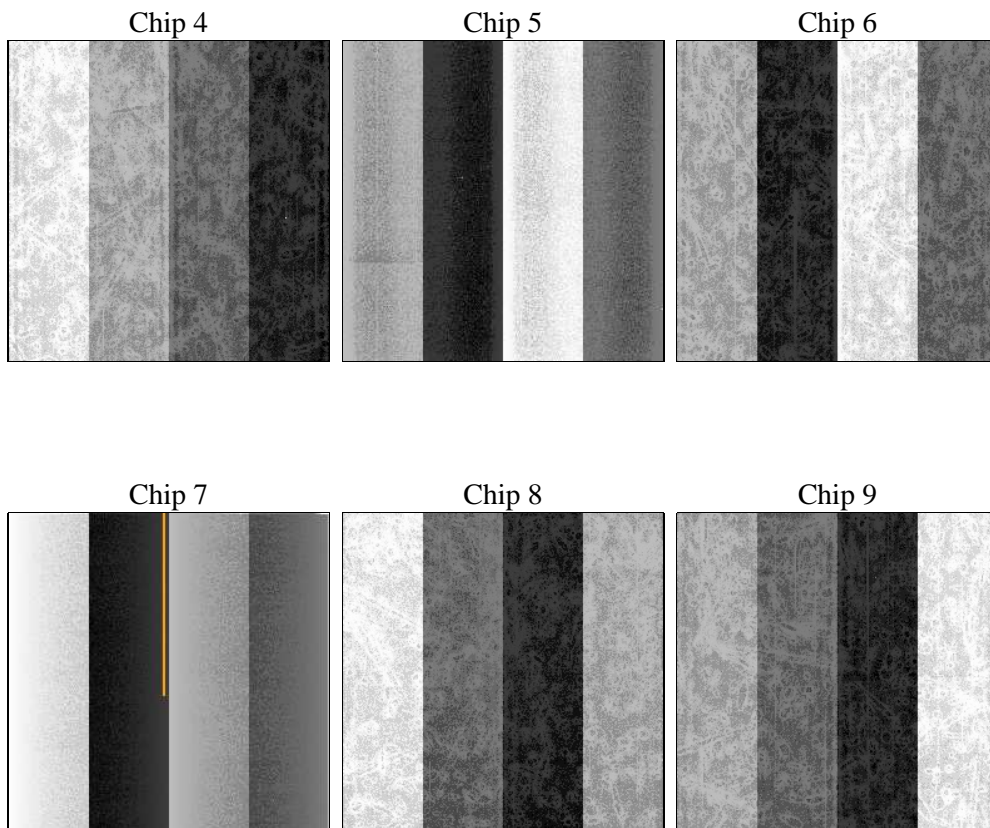
2 OBI

2.1 OBI

2.1.1 Images



2.1.2 Bias



2.1.3 Parameters

obi_num	0	Obi number	sched_exp_time	0.0	[s] Scheduled observation exposure time
ascdsver	8.5	Processing system revision	ontime	7797.865219146	Sum of GTIs [s]
caldsver	4.5.4	 	ontime4	5279.6232240498	Sum of GTIs [s]
date	2012-12-10T13:38:19	Date and time of file creation	ontime5	7797.865219146	Sum of GTIs [s]
revision	3	Processing version of data	ontime6	5769.000279814	Sum of GTIs [s]
			ontime7	7797.865219146	Sum of GTIs [s]
			ontime8	6131.9081202447	Sum of GTIs [s]
			ontime9	5649.0961404741	Sum of GTIs [s]
			l1events	1412245	Number of level 1 events

2.1.4 Events

	ccd 4	ccd 5	ccd 6	ccd 7	ccd 8	ccd 9		ccd 4	ccd 5	ccd 6	ccd 7	ccd 8	ccd 9
level 1 events	188091	279405	212978	291352	236675	203744	grade 0 events	82205	52572	90184	57754	98614	86155
rejected events	46448	57801	46788	50818	54820	47321		43%	18%	42%	19%	41%	42%
rejected %	24%	20%	21%	17%	23%	23%	grade 1 events	668	338	497	186	598	554
								0%	0%	0%	0%	0%	0%
							grade 2 events	22603	77432	28983	53166	32090	26636
								12%	27%	13%	18%	13%	13%
							grade 3 events	9395	12947	10379	24073	12142	9980
								4%	4%	4%	8%	5%	4%
							grade 4 events	9461	12862	10340	23886	11861	9985
								5%	4%	4%	8%	5%	4%
							grade 5 events	2639	9236	3026	9114	3740	3138
								1%	3%	1%	3%	1%	1%
							grade 6 events	17979	65791	26304	81655	27148	23667
								9%	23%	12%	28%	11%	11%
							grade 7 events	43141	48227	43265	41518	50482	43629
								22%	17%	20%	14%	21%	21%

2.2 Compared Parameters

Parameter	Planned	Actual	Parameter	Planned	Actual
Instrument	ACIS	ACIS	Obspar format version number	7	7
Detector	ACIS-456789	ACIS-456789	Obspar file type	PREDICTED	ACTUAL
Grating	NONE	NONE	Obspar update status	NONE	UPDATED
Data mode	FAINT	FAINT	On-chip summing requested	N	N
Observation mode	SECONDARY	SECONDARY	Subarray requested	NONE	NONE
[deg] Pointing RA	0	25.02786788775827	Alternating exposures requested	N	N
[deg] Pointing Dec	0	1.006756153554836	[s] Primary exposure time	3.2	3.2
[deg] Pointing Roll	0.0	340.7590570864851			
[mm] SIM focus pos	-0.684267	-0.6828225247311905			
[mm] SIM defocus	0	0.8505141146731063			
[mm] SIM translation stage pos	-190.132523	250.466033080201			
[mm] SIM translation stage offset	0	-0.01005468664627074			
[s] Observation start time (MET)	214976869.869741	214976868.84475			
Observation start date	2004-10-24T03:47:50	2004-10-24T03:47:48			
[s] Observation end time (MET)	214990469.57035	214990468.54536			
Observation end date	2004-10-24T07:34:30	2004-10-24T07:34:28			
Read mode	TIMED	TIMED			

2.3 Star Slots

2.4 FID Slots

A Summary

A.1 Status

V&V Scientist	Beth Sundheim
V&V Date (YYYY-MM-DD)	2013.01.03
V&V Edition	1
V&V Disposition and Status	OK
V&V Charge Time	7.797865219146

A.2 Comments