

V&V Reference Report

L2 ASCDS Version : 8.5

Observation 59961 - L2 Version 3
Chandra X-Ray Center

L2 Processing Date : Dec 11 2012

Contents

1	Front	2
2	OBI	3
2.1	OBI	3
2.1.1	Images	3
2.1.2	Bias	3
2.1.3	Parameters	4
2.1.4	Events	4
2.2	Compared Parameters	5
2.3	Star Slots	6
2.4	FID Slots	6
A	Summary	7
A.1	Status	7
A.2	Comments	7

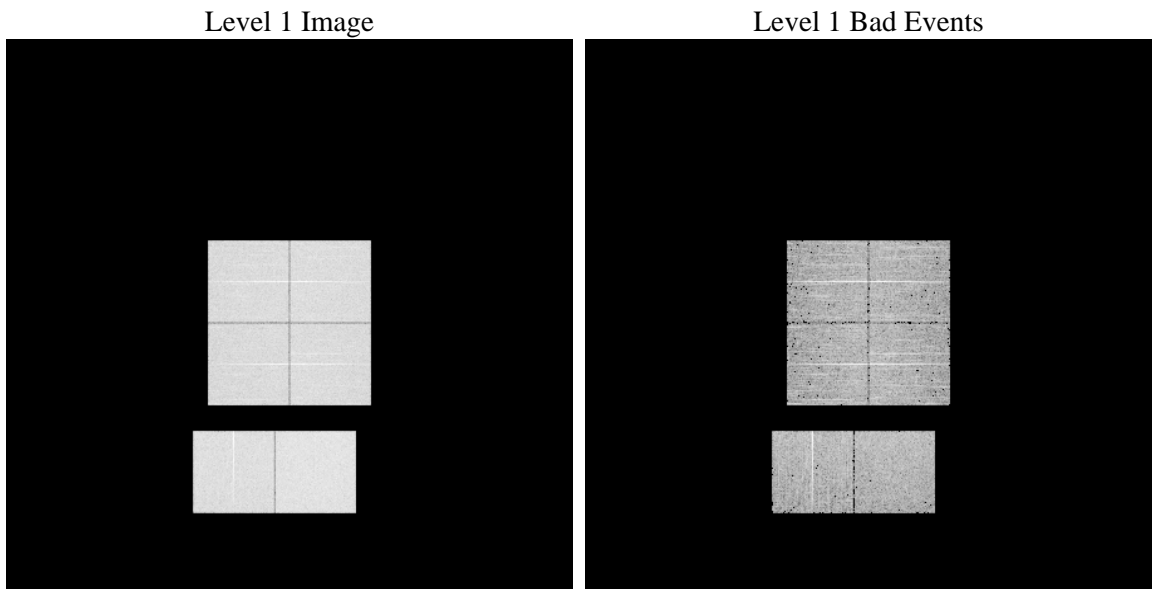
1 Front

seq_num	 	Sequence number
obs_id	59961	Observation id
title	ACIS-012367 diagnostics	Proposal title
observer	CHANDRA engineering request/realtime commanding	Principal investig
object	 	Source name
dtcycle	0	
cycle	P	events from which exps? Prim/Second/Both
ra_targ	0.0	Observer's specified target RA [deg]
dec_targ	0.0	Observer's specified target Dec [deg]
ra_nom	63.968922907055	Nominal RA [deg]
dec_nom	27.007361022957	Nominal Dec [deg]
roll_nom	132.28773930251	Nominal Roll [deg]
revision	3	Processing version of data
ontime	5730.0972070396	Sum of GTIs [s]
livetime	5657.5392659538	Livetime [s]
ontime0	4764.2876988947	Sum of GTIs [s]
ontime1	4910.1312828958	Sum of GTIs [s]
ontime2	4482.2765821218	Sum of GTIs [s]
ontime3	4660.5760821402	Sum of GTIs [s]
ontime6	5078.5748836994	Sum of GTIs [s]
ontime7	5730.0972070396	Sum of GTIs [s]
l2events	784820	Number of level 2 events

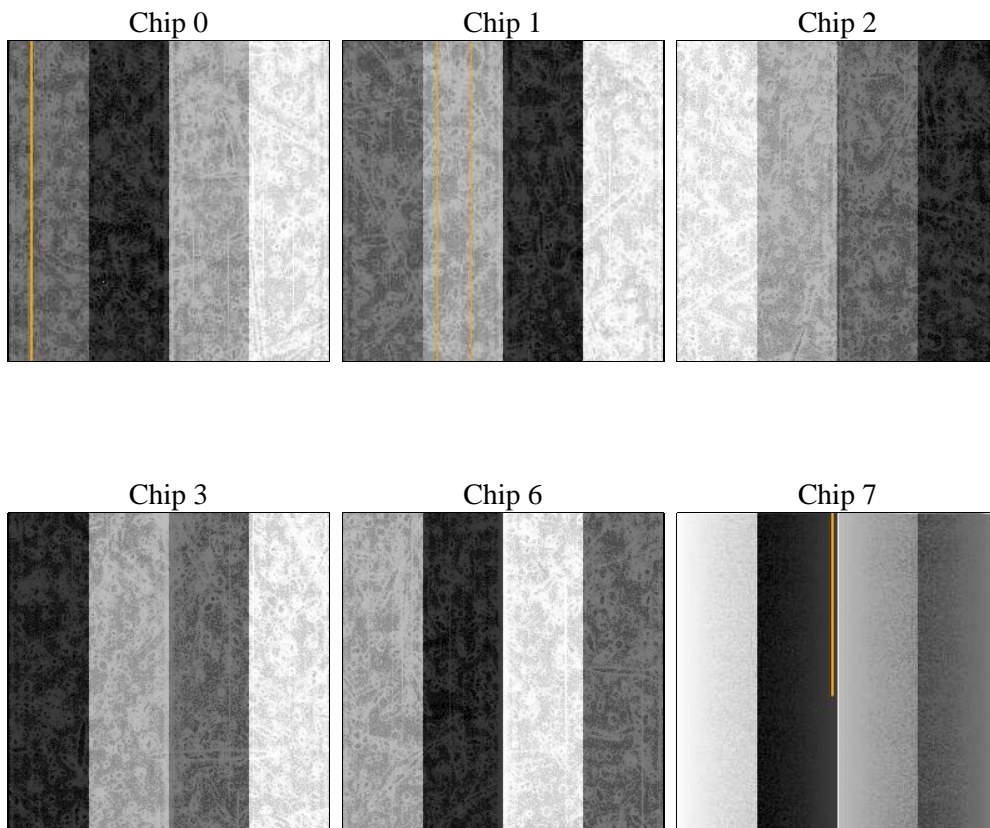
2 OBI

2.1 OBI

2.1.1 Images



2.1.2 Bias



2.1.3 Parameters

obi_num	2	Obi number	sched_exp_time	0.0	[s] Scheduled observation exposure time
ascdsver	8.5	Processing system revision	ontime	5730.0972070396	Sum of GTIs [s]
caldsver	4.5.4	 	ontime0	4764.2876988947	Sum of GTIs [s]
date	2012-12-12T00:32:52	Date and time of file creation	ontime1	4910.1312828958	Sum of GTIs [s]
revision	3	Processing version of data	ontime2	4482.2765821218	Sum of GTIs [s]
			ontime3	4660.5760821402	Sum of GTIs [s]
			ontime6	5078.5748836994	Sum of GTIs [s]
			ontime7	5730.0972070396	Sum of GTIs [s]
			l1events	1043605	Number of level 1 events

2.1.4 Events

	ccd 0	ccd 1	ccd 2	ccd 3	ccd 6	ccd 7		ccd 0	ccd 1	ccd 2	ccd 3	ccd 6	ccd 7
level 1 events	163001	168832	157542	163789	182400	208041	grade 0 events	70761	72415	68198	71669	77457	40746
rejected events	34894	35958	36135	36831	39045	36542		43%	42%	43%	43%	42%	19%
rejected %	21%	21%	22%	22%	21%	17%	grade 1 events	415	399	424	455	398	144
								0%	0%	0%	0%	0%	0%
							grade 2 events	22046	23722	20056	21135	24789	37571
								13%	14%	12%	12%	13%	18%
							grade 3 events	8383	8488	7866	8246	8915	16827
								5%	5%	4%	5%	4%	8%
							grade 4 events	8254	8446	7951	8339	8806	16666
								5%	5%	5%	5%	4%	8%
							grade 5 events	2083	2217	1876	2270	2411	6331
								1%	1%	1%	1%	1%	3%
							grade 6 events	18663	19803	17336	17569	23388	59689
								11%	11%	11%	10%	12%	28%
							grade 7 events	32396	33342	33835	34106	36236	30067
								19%	19%	21%	20%	19%	14%

2.2 Compared Parameters

Parameter	Planned	Actual
Instrument	ACIS	ACIS
Detector	ACIS-012367	ACIS-012367
Grating	NONE	NONE
Data mode	FAINT	FAINT
Observation mode	SECONDARY	SECONDARY
[deg] Pointing RA	0	63.968922907055
[deg] Pointing Dec	0	27.00736102295674
[deg] Pointing Roll	0.0	132.2877393025081
[mm] SIM focus pos	-0.782348	-0.7809083437167272
[mm] SIM defocus	0	0.7524282956875696
[mm] SIM translation stage pos	-233.592463	250.4635187648994
[mm] SIM translation stage offset	0	-0.007540371344731511
[s] Observation start time (MET)	217297394.123798	217297393.0988
Observation start date	2004-11-20T00:23:14	2004-11-20T00:23:13
[s] Observation end time (MET)	217318554.224748	217318553.19974
Observation end date	2004-11-20T06:15:54	2004-11-20T06:15:53
Read mode	TIMED	TIMED

Parameter	Planned	Actual
Obspar format version number	7	7
Obspar file type	PREDICTED	ACTUAL
Obspar update status	NONE	UPDATED
On-chip summing requested	N	N
Subarray requested	NONE	NONE
Alternating exposures requested	N	N
[s] Primary exposure time	3.2	3.2

2.3 Star Slots

2.4 FID Slots

A Summary

A.1 Status

V&V Scientist	Beth Sundheim
V&V Date (YYYY-MM-DD)	2013.01.04
V&V Edition	1
V&V Disposition and Status	OK
V&V Charge Time	5.7300972070396

A.2 Comments