

# V&V Reference Report

## L2 ASCDS Version : 7.6.7.1

Observation 59961 - L2 Version 001  
Chandra X-Ray Center

L2 Processing Date : Apr 10 2006

## Contents

<b>1</b>	<b>Front</b>	<b>2</b>
<b>2</b>	<b>OBI</b>	<b>3</b>
2.1	OBI . . . . .	3
2.1.1	Images . . . . .	3
2.1.2	Bias . . . . .	3
2.1.3	Parameters . . . . .	4
2.1.4	Events . . . . .	4
2.2	Compared Parameters . . . . .	5
2.3	Aspect . . . . .	6
2.4	Star Slots . . . . .	8
2.5	FID Slots . . . . .	8
<b>A</b>	<b>Summary</b>	<b>9</b>
A.1	Status . . . . .	9
A.2	Comments . . . . .	9

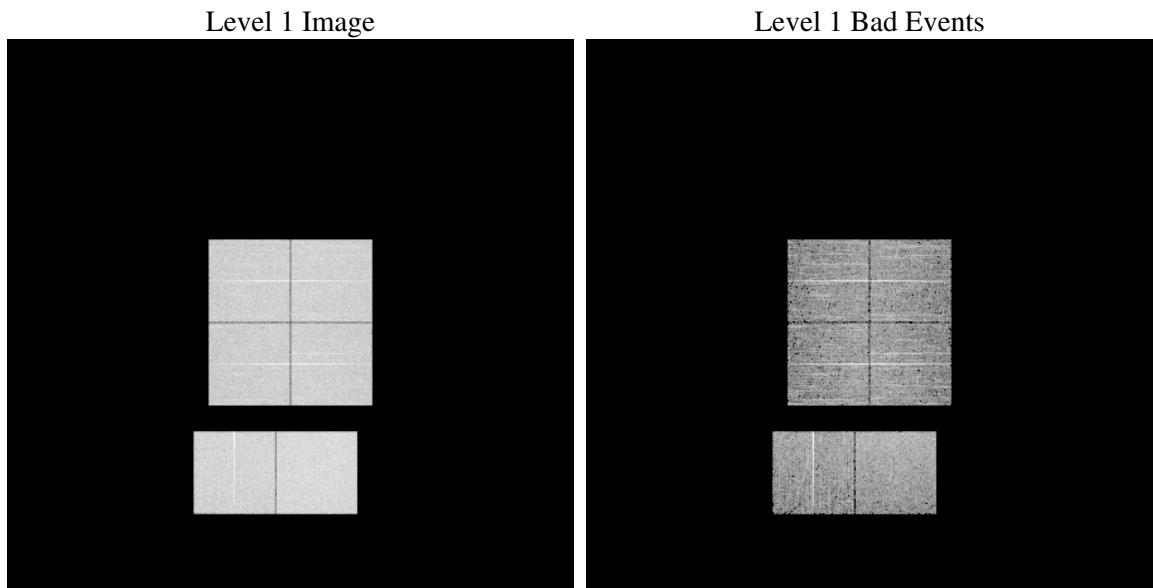
# 1 Front

seq_num	&#160
obs_id	59961
title	ACIS-012367 diagnostics
observer	CHANDRA engineering request/realtime commanding
object	&#160
dtcycle	0
cycle	P
ra_targ	0.0
dec_targ	0.0
ra_nom	63.968943856729
dec_nom	27.007340454476
roll_nom	132.28772978032
revision	2
ontime	5729.4816234112
livetime	5656.9314772159
ontime0	4763.7131552696
ontime1	4909.597779274
ontime2	4481.8299033642
ontime3	4659.9194585085
ontime6	5078.2102848887
ontime7	5729.4816234112
l2events	777013

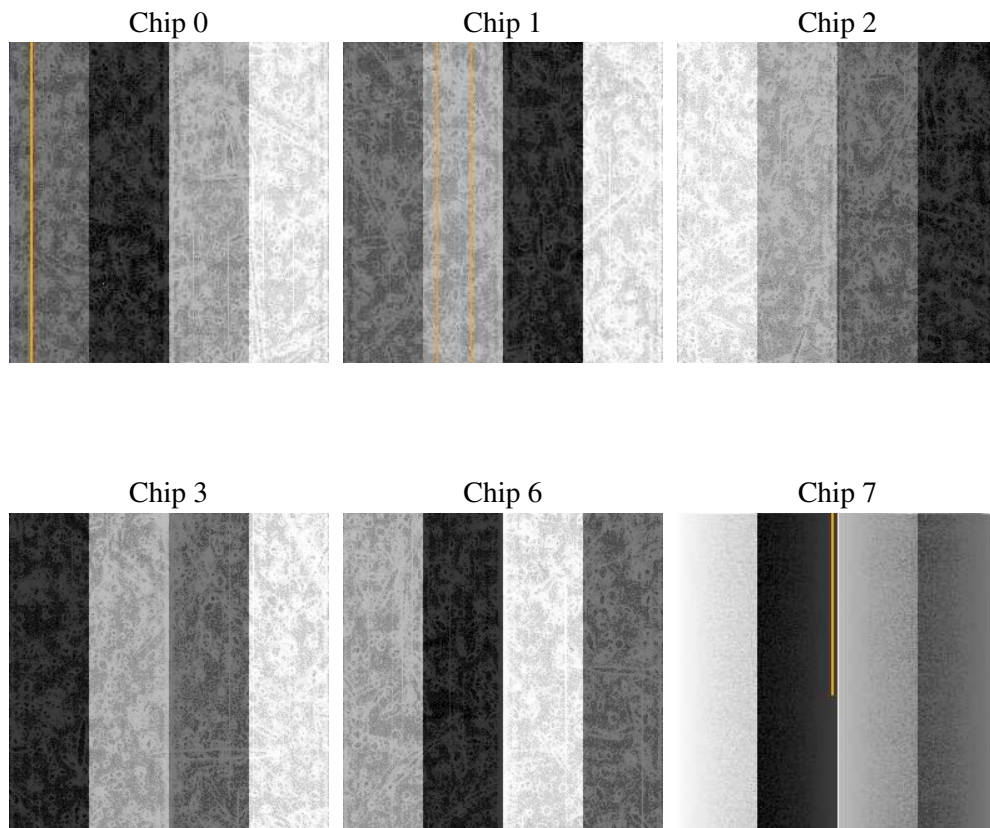
## 2 OBI

### 2.1 OBI

#### 2.1.1 Images



#### 2.1.2 Bias



### 2.1.3 Parameters

obi_num	2
ascdsver	7.6.7.1
caldbver	3.2.1
date	2006-04-11T00:33:09
revision	2

sched_exp_time	0.0
ontime	5730.0972070396
ontime0	4764.2876988947
ontime1	4910.1312828958
ontime2	4482.3223669827
ontime3	4660.5760821402
ontime6	5078.6617085338
ontime7	5730.0972070396
l1events	1043605

### 2.1.4 Events

	ccd 0	ccd 1	ccd 2	ccd 3	ccd 6	ccd 7
level 1 events	163001	168832	157542	163789	182400	208041
rejected events	34912	35970	36150	36835	39073	44385
rejected %	21%	21%	22%	22%	21%	21%

	ccd 0	ccd 1	ccd 2	ccd 3	ccd 6	ccd 7
grade 0 events	70683	72216	68114	71591	77187	26234
	43%	42%	43%	43%	42%	12%
grade 1 events	404	394	415	449	390	91
	0%	0%	0%	0%	0%	0%
grade 2 events	22123	23921	20142	21214	25063	50988
	13%	14%	12%	12%	13%	24%
grade 3 events	8348	8449	7839	8229	8876	11101
	5%	5%	4%	5%	4%	5%
grade 4 events	8228	8423	7921	8310	8761	10838
	5%	4%	5%	5%	4%	5%
grade 5 events	2090	2204	1881	2255	2398	4928
	1%	1%	1%	1%	1%	2%
grade 6 events	18707	19853	17376	17610	23440	64495
	11%	11%	11%	10%	12%	31%
grade 7 events	32418	33372	33854	34131	36285	39366
	19%	19%	21%	20%	19%	18%

## 2.2 Compared Parameters

Parameter	Planned	Actual	Parameter	Planned	Actual
Instrument	ACIS	ACIS	Obspar format version number	6	6
Detector	ACIS-012367	ACIS-012367	Obspar file type	PREDICTED	ACTUAL
Grating	NONE	NONE	Obspar update status	NONE	UPDATED
Data mode	FAINT	FAINT	On-chip summing requested	N	N
Observation mode	SECONDARY	SECONDARY	Subarray requested	NONE	NONE
Pointing RA	0	63.96894385672881	Alternating exposures requested	N	N
Pointing Dec	0	27.00734045447583	Primary exposure time	3.2	3.2
Pointing Roll	0.0	132.2877297803154			
SIM focus pos (mm)	-0.782348	-0.7809083437167272			
SIM defocus (mm)	0	0.7524282956875696			
SIM translation stage pos (mm)	-233.592463	250.4635187648994			
SIM translation stage offset (mm)	0	-0.007540371344731511			
Observation start time	217297394.123798	217297393.0988			
Observation start date	2004-11-20T00:23:14	2004-11-20T00:23:13			
Observation end time	217318554.224748	217318553.19974			
Observation end date	2004-11-20T06:15:54	2004-11-20T06:15:53			
Read mode	TIMED	TIMED			

## 2.3 Aspect



## **2.4 Star Slots**

## **2.5 FID Slots**



## A Summary

### A.1 Status

V&V Scientist	Jen Lauer
V&V Date (YYYY-MM-DD)	2006.04.11
V&V Edition	1
V&V Disposition and Status	OK
V&V Charge Time	5.72948162

### A.2 Comments

The ACIS focal plane temperature was above calibration limits for the entire observation.