

# V&V Reference Report

## L2 ASCDS Version : 7.6.7.1

Observation 59959 - L2 Version 001  
Chandra X-Ray Center

L2 Processing Date : Apr 10 2006

## Contents

<b>1</b>	<b>Front</b>	<b>2</b>
<b>2</b>	<b>OBI</b>	<b>3</b>
2.1	OBI . . . . .	3
2.1.1	Images . . . . .	3
2.1.2	Bias . . . . .	3
2.1.3	Parameters . . . . .	4
2.1.4	Events . . . . .	4
2.2	Compared Parameters . . . . .	5
2.3	Aspect . . . . .	6
2.4	Star Slots . . . . .	8
2.5	FID Slots . . . . .	8
<b>A</b>	<b>Summary</b>	<b>9</b>
A.1	Status . . . . .	9
A.2	Comments . . . . .	9

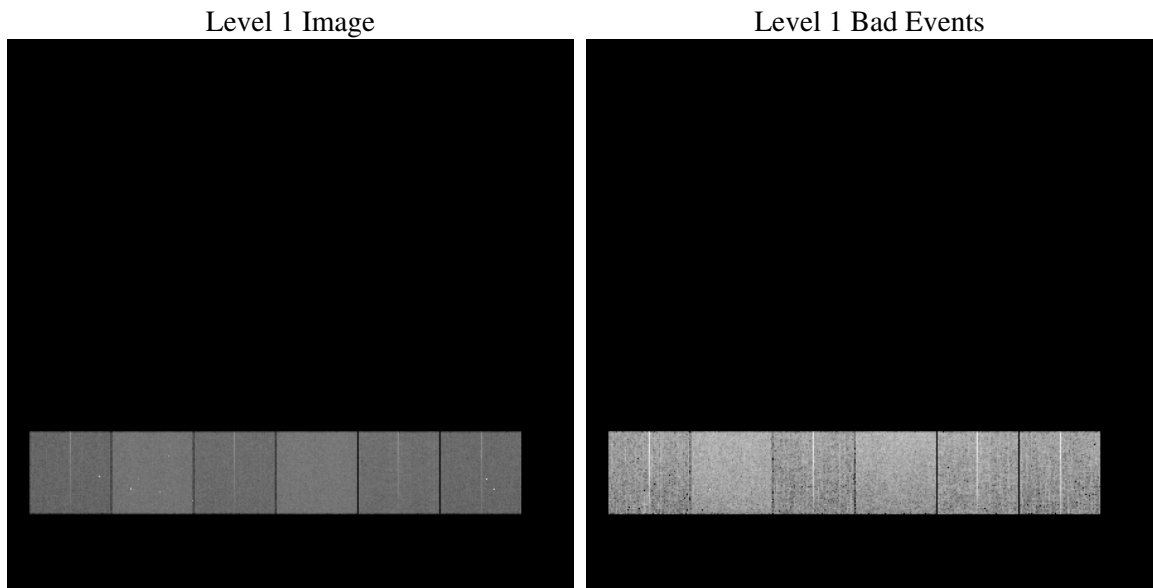
# 1 Front

seq_num	&#160
obs_id	59959
title	ACIS-456789 diagnostics
observer	CHANDRA engineering request/realtime commanding
object	&#160
dtcycle	0
cycle	P
ra_targ	0.0
dec_targ	0.0
ra_nom	76.958938503987
dec_nom	46.300613084198
roll_nom	142.95591546747
revision	2
ontime	7797.6160184145
livetime	7698.8779092287
ontime4	5483.6762473583
ontime5	7797.6570584178
ontime6	6031.3621919751
ontime7	7797.6160184145
ontime8	6115.7098391652
ontime9	5804.369743675
l2events	1032156

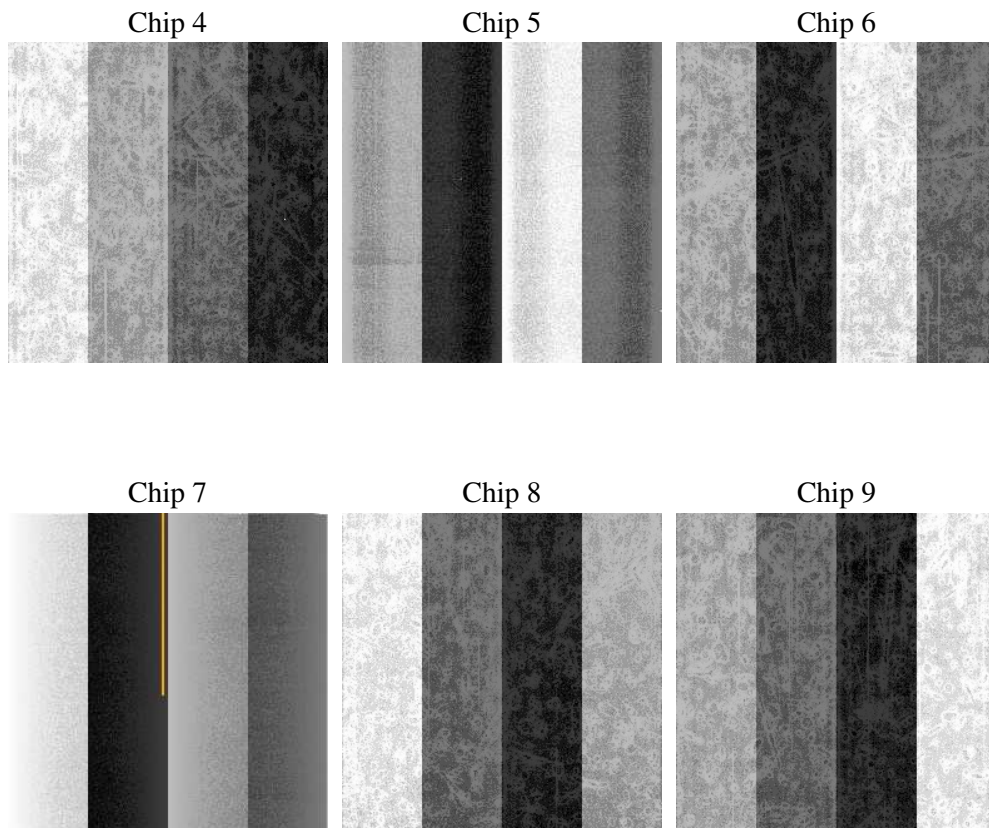
## 2 OBI

### 2.1 OBI

#### 2.1.1 Images



#### 2.1.2 Bias



### 2.1.3 Parameters

obi_num	1
ascdsver	7.6.7.1
caldsver	3.2.1
date	2006-04-11T00:59:22
revision	2

sched_exp_time	0.0
ontime	7797.8712399304
ontime4	5483.8083488643
ontime5	7797.8712399304
ontime6	6031.5353334844
ontime7	7797.8712399304
ontime8	6115.8009006977
ontime9	5804.6660051942
l1events	1411112

### 2.1.4 Events

	ccd 4	ccd 5	ccd 6	ccd 7	ccd 8	ccd 9
level 1 events	191597	271889	217929	286971	232730	209996
rejected events	45631	63191	45472	58382	52234	45994
rejected %	23%	23%	20%	20%	22%	21%

	ccd 4	ccd 5	ccd 6	ccd 7	ccd 8	ccd 9
grade 0 events	84419	24061	93135	39645	97417	87672
	44%	8%	42%	13%	41%	41%
grade 1 events	680	288	513	113	503	529
	0%	0%	0%	0%	0%	0%
grade 2 events	23357	96559	30036	68805	31617	31726
	12%	35%	13%	23%	13%	15%
grade 3 events	9629	6661	10767	16672	11747	10454
	5%	2%	4%	5%	5%	4%
grade 4 events	9627	6601	10744	16172	11831	10180
	5%	2%	4%	5%	5%	4%
grade 5 events	2612	6147	3094	6962	3648	3245
	1%	2%	1%	2%	1%	1%
grade 6 events	18934	74816	27775	87295	27884	23970
	9%	27%	12%	30%	11%	11%
grade 7 events	42339	56756	41865	51307	48083	42220
	22%	20%	19%	17%	20%	20%

## 2.2 Compared Parameters

Parameter	Planned	Actual	Parameter	Planned	Actual
Instrument	ACIS	ACIS	Obspar format version number	6	6
Detector	ACIS-456789	ACIS-456789	Obspar file type	PREDICTED	ACTUAL
Grating	NONE	NONE	Obspar update status	NONE	UPDATED
Data mode	FAINT	FAINT	On-chip summing requested	N	N
Observation mode	SECONDARY	SECONDARY	Subarray requested	NONE	NONE
Pointing RA	0	76.95893850398718	Alternating exposures requested	N	N
Pointing Dec	0	46.30061308419761	Primary exposure time	3.2	3.2
Pointing Roll	0.0	142.9559154674686			
SIM focus pos (mm)	-0.684267	-0.7809083437167272			
SIM defocus (mm)	0	0.7524282956875696			
SIM translation stage pos (mm)	-190.132523	250.4635187648994			
SIM translation stage offset (mm)	0	-0.007540371344731511			
Observation start time	217490096.182448	217490095.15744			
Observation start date	2004-11-22T05:54:56	2004-11-22T05:54:55			
Observation end time	217527297.534117	217527296.50911			
Observation end date	2004-11-22T16:14:58	2004-11-22T16:14:56			
Read mode	TIMED	TIMED			

## 2.3 Aspect



## **2.4 Star Slots**

## **2.5 FID Slots**



## A Summary

### A.1 Status

V&V Scientist	Jen Lauer
V&V Date (YYYY-MM-DD)	2006.04.11
V&V Edition	1
V&V Disposition and Status	OK
V&V Charge Time	7.79761601

### A.2 Comments