

V&V Reference Report

L2 ASCDS Version : 7.6.7.1

Observation 59942 - L2 Version 002
Chandra X-Ray Center

L2 Processing Date : Apr 10 2006

Contents

1	Front	2
2	OBI	3
2.1	OBI	3
2.1.1	Images	3
2.1.2	Bias	3
2.1.3	Parameters	4
2.1.4	Events	4
2.2	Compared Parameters	5
2.3	Aspect	6
2.4	Star Slots	8
2.5	FID Slots	8
A	Summary	9
A.1	Status	9
A.2	Comments	9

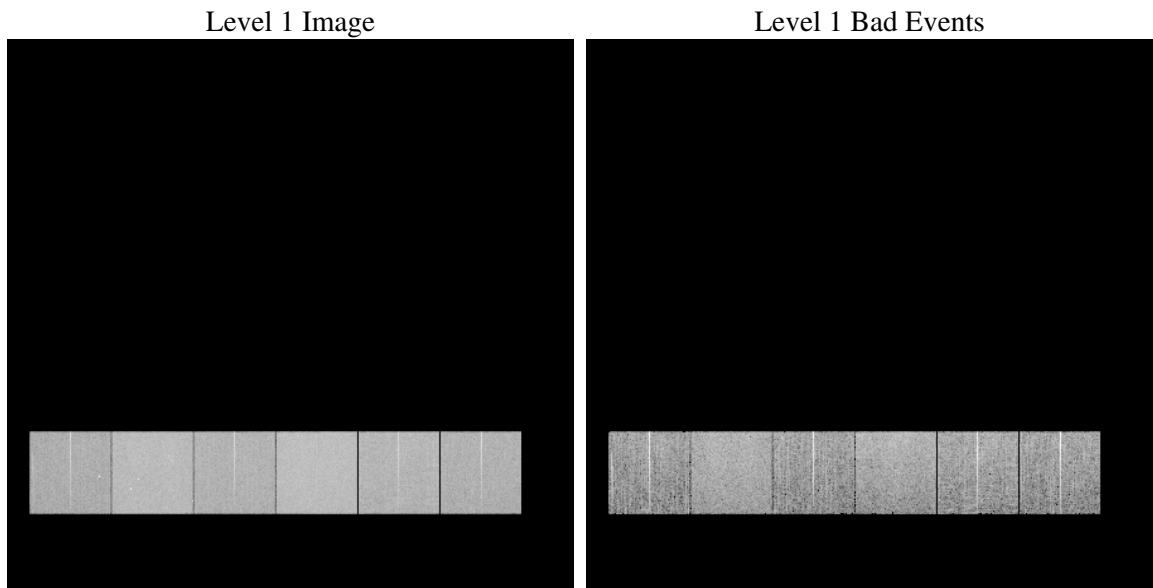
1 Front

seq_num	
obs_id	59942
title	ACIS-456789 diagnostics
observer	CHANDRA engineering request/realtime commanding
object	
dtcycle	0
cycle	P
ra_targ	0.0
dec_targ	0.0
ra_nom	97.960878152477
dec_nom	43.012886513789
roll_nom	122.17831072469
revision	2
ontime	6897.5962708294
livetime	6810.2547536144
ontime4	4826.7272711098
ontime5	6897.6373108327
ontime6	5345.2448642254
ontime7	6897.5962708294
ontime8	5468.4844158292
ontime9	5173.3494978845
l2events	910929

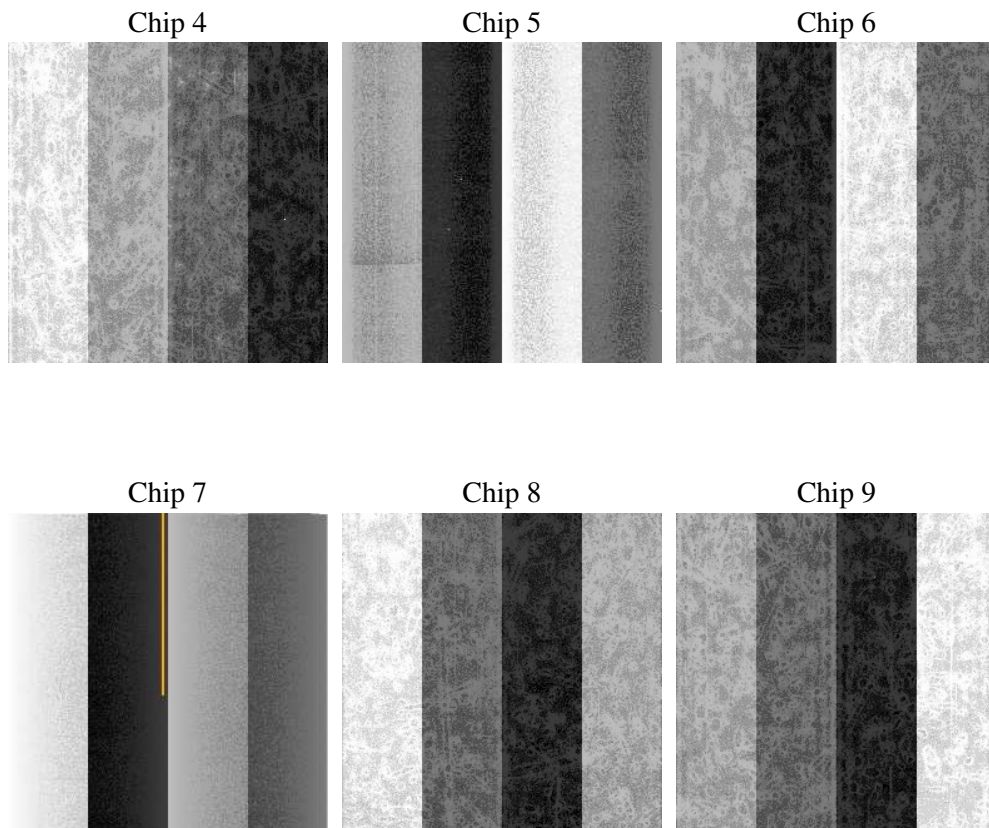
2 OBI

2.1 OBI

2.1.1 Images



2.1.2 Bias



2.1.3 Parameters

obi_num	0
ascdsver	7.6.7.1
caldbver	3.2.1
date	2006-04-11T02:36:58
revision	2

sched_exp_time	0.0
ontime	6900.116820097
ontime4	4829.1247003675
ontime5	6900.116820097
ontime6	5347.6833334863
ontime7	6900.116820097
ontime8	5470.8408051133
ontime9	5175.9110871553
l1events	1251327

2.1.4 Events

	ccd 4	ccd 5	ccd 6	ccd 7	ccd 8	ccd 9
level 1 events	170966	238964	194756	253857	208364	184420
rejected events	43122	56419	42639	53110	48214	43110
rejected %	25%	23%	21%	20%	23%	23%

	ccd 4	ccd 5	ccd 6	ccd 7	ccd 8	ccd 9
grade 0 events	74572	18698	82579	33916	86643	77896
	43%	7%	42%	13%	41%	42%
grade 1 events	603	96	402	114	480	461
	0%	0%	0%	0%	0%	0%
grade 2 events	19427	85588	26291	61596	28386	23958
	11%	35%	13%	24%	13%	12%
grade 3 events	8618	5448	9391	13895	10324	9016
	5%	2%	4%	5%	4%	4%
grade 4 events	8490	5120	9361	13664	10172	8963
	4%	2%	4%	5%	4%	4%
grade 5 events	2314	5402	2684	5998	3219	2868
	1%	2%	1%	2%	1%	1%
grade 6 events	16832	67779	24589	77759	24708	21570
	9%	28%	12%	30%	11%	11%
grade 7 events	40110	50833	39459	46915	44432	39688
	23%	21%	20%	18%	21%	21%

2.2 Compared Parameters

Parameter	Planned	Actual	Parameter	Planned	Actual
Instrument	ACIS	ACIS	Obspar format version number	6	6
Detector	ACIS-456789	ACIS-456789	Obspar file type	PREDICTED	ACTUAL
Grating	NONE	NONE	Obspar update status	NONE	UPDATED
Data mode	FAINT	FAINT	On-chip summing requested	N	N
Observation mode	SECONDARY	SECONDARY	Subarray requested	NONE	NONE
Pointing RA	0	97.96087815247742	Alternating exposures requested	N	N
Pointing Dec	0	43.01288651378902	Primary exposure time	3.2	3.2
Pointing Roll	0.0	122.1783107246917			
SIM focus pos (mm)	-0.684267	-0.7809083437167272			
SIM defocus (mm)	0	0.7524282956875696			
SIM translation stage pos (mm)	-190.132523	250.466033080201			
SIM translation stage offset (mm)	0	-0.01005468664627074			
Observation start time	218399646.373326	218399645.34833			
Observation start date	2004-12-02T18:34:06	2004-12-02T18:34:05			
Observation end time	218419100.874202	218419099.8492			
Observation end date	2004-12-02T23:58:21	2004-12-02T23:58:19			
Read mode	TIMED	TIMED			

2.3 Aspect

2.4 Star Slots

2.5 FID Slots

A Summary

A.1 Status

V&V Scientist	Jen Lauer
V&V Date (YYYY-MM-DD)	2006.04.11
V&V Edition	1
V&V Disposition and Status	OK
V&V Charge Time	6.89759627

A.2 Comments

The ACIS focal plane temperature was above calibration limits for the first half of the observation.