

# V&V Reference Report

## L2 ASCDS Version : 8.5.1

Observation 59910 - L2 Version 3  
Chandra X-Ray Center

L2 Processing Date : Dec 14 2012

## Contents

<b>1</b>	<b>Front</b>	<b>2</b>
<b>2</b>	<b>OBI</b>	<b>3</b>
2.1	OBI . . . . .	3
2.1.1	Images . . . . .	3
2.1.2	Bias . . . . .	3
2.1.3	Parameters . . . . .	4
2.1.4	Events . . . . .	4
2.2	Compared Parameters . . . . .	5
2.3	Star Slots . . . . .	6
2.4	FID Slots . . . . .	6
<b>A</b>	<b>Summary</b>	<b>7</b>
A.1	Status . . . . .	7
A.2	Comments . . . . .	7

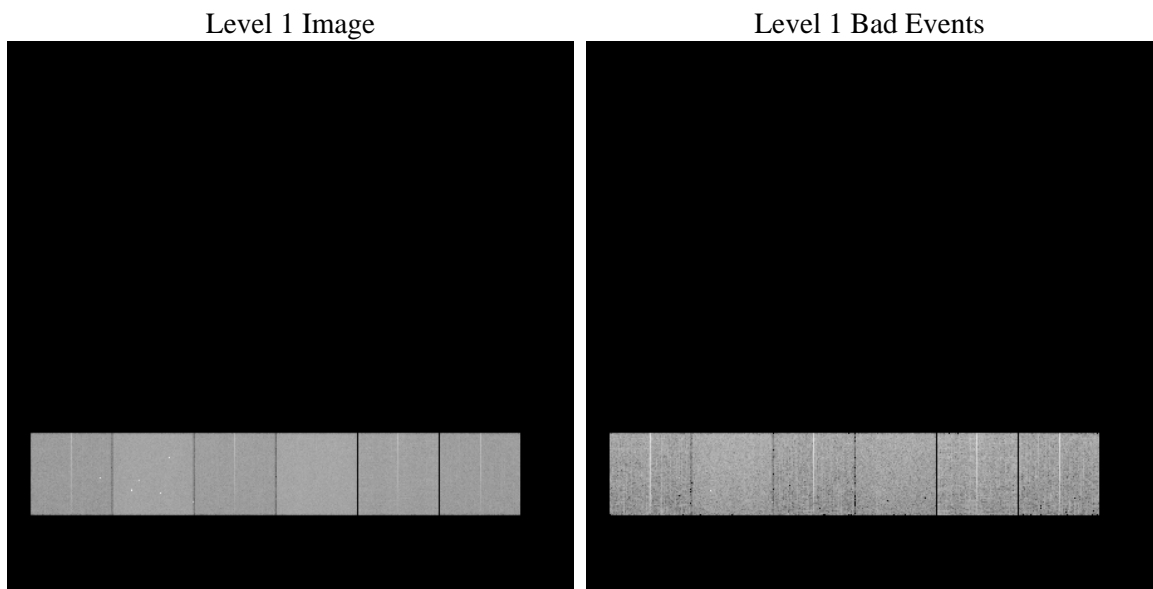
# 1 Front

seq_num	&#160	Sequence number
obs_id	59910	Observation id
title	ACIS-456789 diagnostics	Proposal title
observer	CHANDRA engineering request/realtime commanding	Principal investig
object	&#160	Source name
dtcycle	0	&#160
cycle	P	events from which exps? Prim/Second/Both
ra_targ	0.0	Observer's specified target RA [deg]
dec_targ	0.0	Observer's specified target Dec [deg]
ra_nom	93.670873727626	Nominal RA [deg]
dec_nom	34.993032289362	Nominal Dec [deg]
roll_nom	162.27781410135	Nominal Roll [deg]
revision	3	Processing version of data
ontime	7795.1999709606	Sum of GTIs [s]
livetime	7696.4924552224	Livetime [s]
ontime4	5730.7017804086	Sum of GTIs [s]
ontime5	7795.1999709606	Sum of GTIs [s]
ontime6	6119.6185824275	Sum of GTIs [s]
ontime7	7795.1999709606	Sum of GTIs [s]
ontime8	6350.8773530126	Sum of GTIs [s]
ontime9	6065.4668878615	Sum of GTIs [s]
l2events	1035714	Number of level 2 events

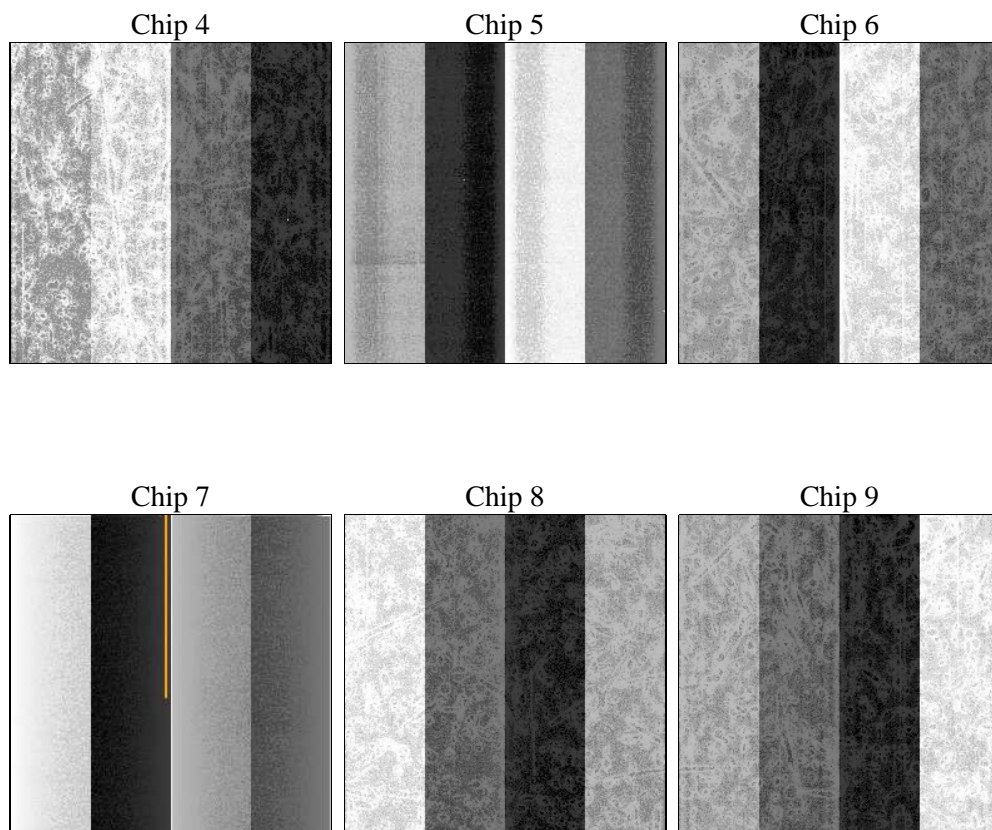
## 2 OBI

### 2.1 OBI

#### 2.1.1 Images



#### 2.1.2 Bias



### 2.1.3 Parameters

obi_num	1	Obi number	sched_exp_time	0.0	[s] Scheduled observation exposure time
ascdsver	8.5.1	Processing system revision	ontime	7795.1999709606	Sum of GTIs [s]
caldbver	4.5.5	&#160	ontime4	5730.7017804086	Sum of GTIs [s]
date	2012-12-14T23:04:41	Date and time of file creation	ontime5	7795.1999709606	Sum of GTIs [s]
revision	3	Processing version of data	ontime6	6119.6185824275	Sum of GTIs [s]
			ontime7	7795.1999709606	Sum of GTIs [s]
			ontime8	6350.8773530126	Sum of GTIs [s]
			ontime9	6065.4668878615	Sum of GTIs [s]
			l1events	1409492	Number of level 1 events

### 2.1.4 Events

	ccd 4	ccd 5	ccd 6	ccd 7	ccd 8	ccd 9		ccd 4	ccd 5	ccd 6	ccd 7	ccd 8	ccd 9
level 1 events	196789	268438	217501	281826	237107	207831	grade 0 events	86028	45552	92316	55633	97785	88243
rejected events	48744	57912	47803	49807	56315	47131		43%	16%	42%	19%	41%	42%
rejected %	24%	21%	21%	17%	23%	22%	grade 1 events	673	250	479	179	554	572
								0%	0%	0%	0%	0%	0%
							grade 2 events	23566	76124	29338	50855	31542	27628
								11%	28%	13%	18%	13%	13%
							grade 3 events	9837	11986	10563	23351	11972	10343
								4%	4%	4%	8%	5%	4%
							grade 4 events	9647	12007	10735	23110	11955	10295
								4%	4%	4%	8%	5%	4%
							grade 5 events	2822	8999	2946	8875	3825	3374
								1%	3%	1%	3%	1%	1%
							grade 6 events	18967	64933	26746	79165	27538	24262
								9%	24%	12%	28%	11%	11%
							grade 7 events	45249	48587	44378	40658	51936	43114
								22%	18%	20%	14%	21%	20%

## 2.2 Compared Parameters

Parameter	Planned	Actual
Instrument	ACIS	ACIS
Detector	ACIS-456789	ACIS-456789
Grating	NONE	NONE
Data mode	FAINT	FAINT
Observation mode	SECONDARY	SECONDARY
[deg] Pointing RA	0	93.67087372762566
[deg] Pointing Dec	0	34.99303228936169
[deg] Pointing Roll	0.0	162.2778141013492
[mm] SIM focus pos	-0.684267	-0.6828225247311905
[mm] SIM defocus	0	0.8505141146731063
[mm] SIM translation stage pos	-190.132523	250.466033080201
[mm] SIM translation stage offset	0	-0.01005468664627074
[s] Observation start time (MET)	220003293.795484	220003292.77049
Observation start date	2004-12-21T08:01:34	2004-12-21T08:01:32
[s] Observation end time (MET)	220042657.897257	220042656.87226
Observation end date	2004-12-21T18:57:38	2004-12-21T18:57:36
Read mode	TIMED	TIMED

Parameter	Planned	Actual
Obspar format version number	7	7
Obspar file type	PREDICTED	ACTUAL
Obspar update status	NONE	UPDATED
On-chip summing requested	N	N
Subarray requested	NONE	NONE
Alternating exposures requested	N	N
[s] Primary exposure time	3.2	3.2

## **2.3 Star Slots**

## **2.4 FID Slots**

## **A Summary**

### **A.1 Status**

V&V Scientist	Jen Lauer
V&V Date (YYYY-MM-DD)	2013.01.04
V&V Edition	1
V&V Disposition and Status	OK
V&V Charge Time	7.7951999709606

### **A.2 Comments**