

V&V Reference Report

L2 ASCDS Version : 8.5.1

Observation 59908 - L2 Version 3
Chandra X-Ray Center

L2 Processing Date : Dec 15 2012

Contents

1	Front	2
2	OBI	3
2.1	OBI	3
2.1.1	Images	3
2.1.2	Bias	3
2.1.3	Parameters	4
2.1.4	Events	4
2.2	Compared Parameters	5
2.3	Star Slots	6
2.4	FID Slots	6
A	Summary	7
A.1	Status	7
A.2	Comments	7

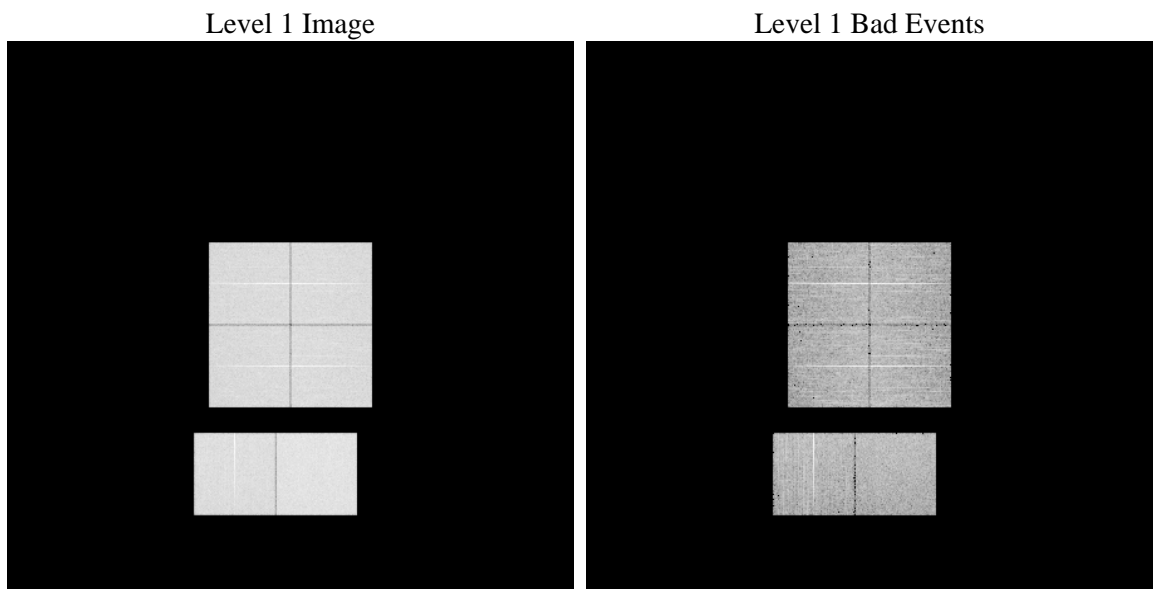
1 Front

seq_num	 	Sequence number
obs_id	59908	Observation id
title	ACIS-012367 diagnostics	Proposal title
observer	CHANDRA engineering request/realtime commanding	Principal investig
object	 	Source name
dtcycle	0	
cycle	P	events from which exps? Prim/Second/Both
ra_targ	0.0	Observer's specified target RA [deg]
dec_targ	0.0	Observer's specified target Dec [deg]
ra_nom	221.19237961603	Nominal RA [deg]
dec_nom	-15.172400620732	Nominal Dec [deg]
roll_nom	72.026074990284	Nominal Roll [deg]
revision	3	Processing version of data
ontime	7800.9361959696	Sum of GTIs [s]
livetime	7702.1560446964	Livetime [s]
ontime0	6410.5231903195	Sum of GTIs [s]
ontime1	6546.6018455029	Sum of GTIs [s]
ontime2	6173.8507599533	Sum of GTIs [s]
ontime3	6368.5804223716	Sum of GTIs [s]
ontime6	6767.2189776897	Sum of GTIs [s]
ontime7	7800.9361959696	Sum of GTIs [s]
l2events	1056093	Number of level 2 events

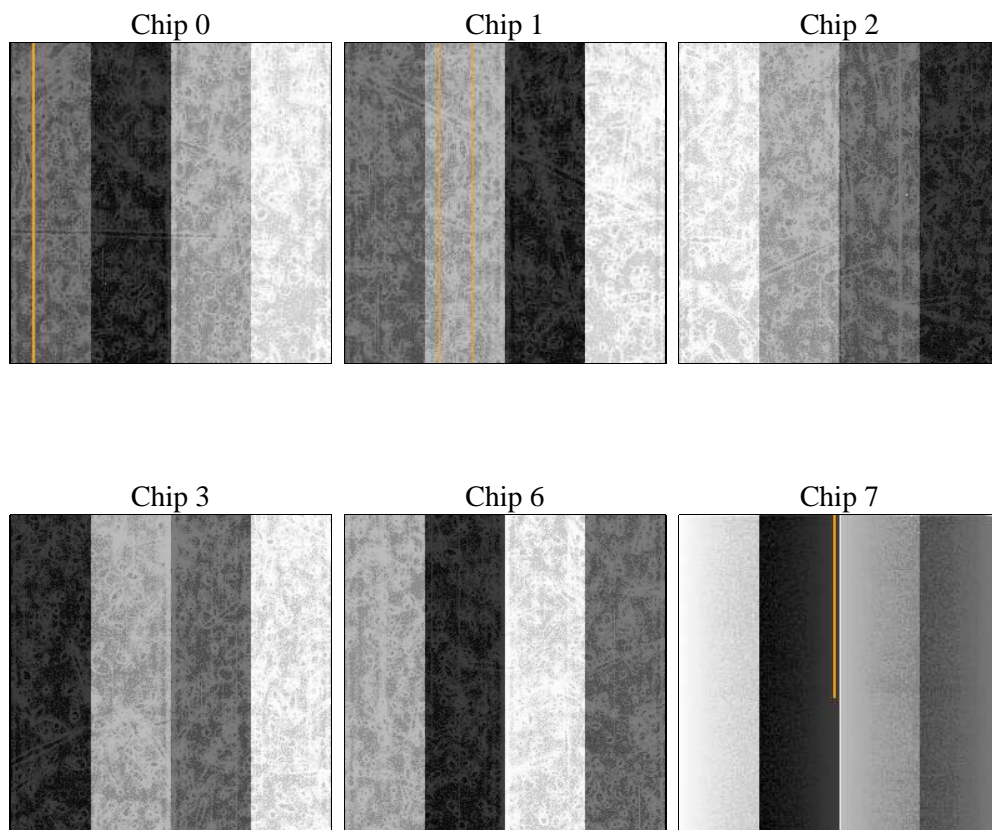
2 OBI

2.1 OBI

2.1.1 Images



2.1.2 Bias



2.1.3 Parameters

obi_num	0	Obi number	sched_exp_time	0.0	[s] Scheduled observation exposure time
ascdsver	8.5.1	Processing system revision	ontime	7800.9361959696	Sum of GTIs [s]
caldsver	4.5.5	 	ontime0	6410.5231903195	Sum of GTIs [s]
date	2012-12-15T05:51:03	Date and time of file creation	ontime1	6546.6018455029	Sum of GTIs [s]
revision	3	Processing version of data	ontime2	6173.8507599533	Sum of GTIs [s]
			ontime3	6368.5804223716	Sum of GTIs [s]
			ontime6	6767.2189776897	Sum of GTIs [s]
			ontime7	7800.9361959696	Sum of GTIs [s]
			l1events	1411171	Number of level 1 events

2.1.4 Events

	ccd 0	ccd 1	ccd 2	ccd 3	ccd 6	ccd 7		ccd 0	ccd 1	ccd 2	ccd 3	ccd 6	ccd 7
level 1 events	219909	223711	216131	223555	243575	284290	grade 0 events	94406	95105	94138	96417	102800	55506
rejected events	48602	48493	48677	51807	53697	50256		42%	42%	43%	43%	42%	19%
rejected %	22%	21%	22%	23%	22%	17%	grade 1 events	549	465	650	625	507	197
								0%	0%	0%	0%	0%	0%
							grade 2 events	29711	31468	27907	29057	32340	51090
								13%	14%	12%	12%	13%	17%
							grade 3 events	11012	11168	10964	11218	11938	23151
								5%	4%	5%	5%	4%	8%
							grade 4 events	11044	11110	10981	11308	11863	22725
								5%	4%	5%	5%	4%	7%
							grade 5 events	2983	3122	2680	3128	3477	8824
								1%	1%	1%	1%	1%	3%
							grade 6 events	25134	26367	23464	23748	30937	81562
								11%	11%	10%	10%	12%	28%
							grade 7 events	45070	44906	45347	48054	49713	41235
								20%	20%	20%	21%	20%	14%

2.2 Compared Parameters

Parameter	Planned	Actual	Parameter	Planned	Actual
Instrument	ACIS	ACIS	Obspar format version number	7	7
Detector	ACIS-012367	ACIS-012367	Obspar file type	PREDICTED	ACTUAL
Grating	NONE	NONE	Obspar update status	NONE	UPDATED
Data mode	FAINT	FAINT	On-chip summing requested	N	N
Observation mode	SECONDARY	SECONDARY	Subarray requested	NONE	NONE
[deg] Pointing RA	0	221.1923796160273	Alternating exposures requested	N	N
[deg] Pointing Dec	0	-15.17240062073221	[s] Primary exposure time	3.2	3.2
[deg] Pointing Roll	0.0	72.02607499028403			
[mm] SIM focus pos	-0.782348	-0.7809083437167272			
[mm] SIM defocus	0	0.7524282956875696			
[mm] SIM translation stage pos	-233.592463	250.466033080201			
[mm] SIM translation stage offset	0	-0.01005468664627074			
[s] Observation start time (MET)	220231817.555785	220231816.53078			
Observation start date	2004-12-23T23:30:18	2004-12-23T23:30:16			
[s] Observation end time (MET)	220246259.806436	220246258.78143			
Observation end date	2004-12-24T03:31:00	2004-12-24T03:30:58			
Read mode	TIMED	TIMED			

2.3 Star Slots

2.4 FID Slots

A Summary

A.1 Status

V&V Scientist	Beth Sundheim
V&V Date (YYYY-MM-DD)	2013.01.07
V&V Edition	1
V&V Disposition and Status	OK
V&V Charge Time	7.8009361959696

A.2 Comments