

V&V Reference Report

L2 ASCDS Version : 7.6.7.1

Observation 59908 - L2 Version 002
Chandra X-Ray Center

L2 Processing Date : Apr 7 2006

Contents

| | | |
|----------|-------------------------------|----------|
| 1 | Front | 2 |
| 2 | OBI | 3 |
| 2.1 | OBI | 3 |
| 2.1.1 | Images | 3 |
| 2.1.2 | Bias | 3 |
| 2.1.3 | Parameters | 4 |
| 2.1.4 | Events | 4 |
| 2.2 | Compared Parameters | 5 |
| 2.3 | Aspect | 6 |
| 2.4 | Star Slots | 8 |
| 2.5 | FID Slots | 8 |
| A | Summary | 9 |
| A.1 | Status | 9 |
| A.2 | Comments | 9 |

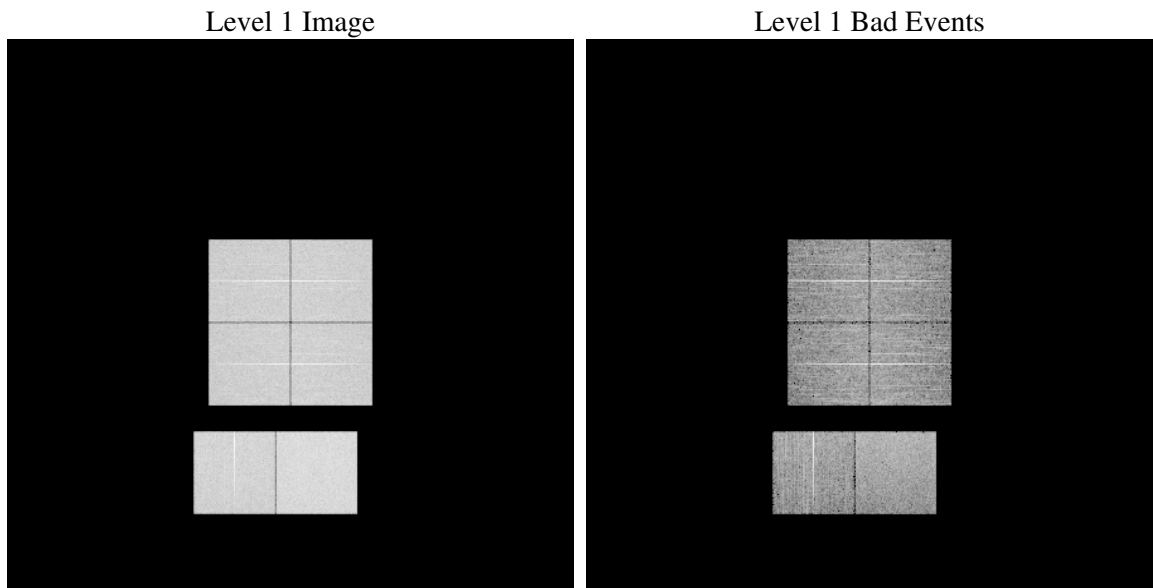
1 Front

| | |
|----------|---|
| seq_num | |
| obs_id | 59908 |
| title | ACIS-012367 diagnostics |
| observer | CHANDRA engineering request/realtime commanding |
| object | |
| dtcycle | 0 |
| cycle | P |
| ra_targ | 0.0 |
| dec_targ | 0.0 |
| ra_nom | 221.1923707025 |
| dec_nom | -15.172427032781 |
| roll_nom | 72.026072649856 |
| revision | 2 |
| ontime | 7800.1488862634 |
| livetime | 7701.3787043797 |
| ontime0 | 6409.8179606199 |
| ontime1 | 6545.9786958098 |
| ontime2 | 6173.3096902668 |
| ontime3 | 6367.6031573415 |
| ontime6 | 6766.4469126463 |
| ontime7 | 7800.1488862634 |
| l2events | 1045620 |

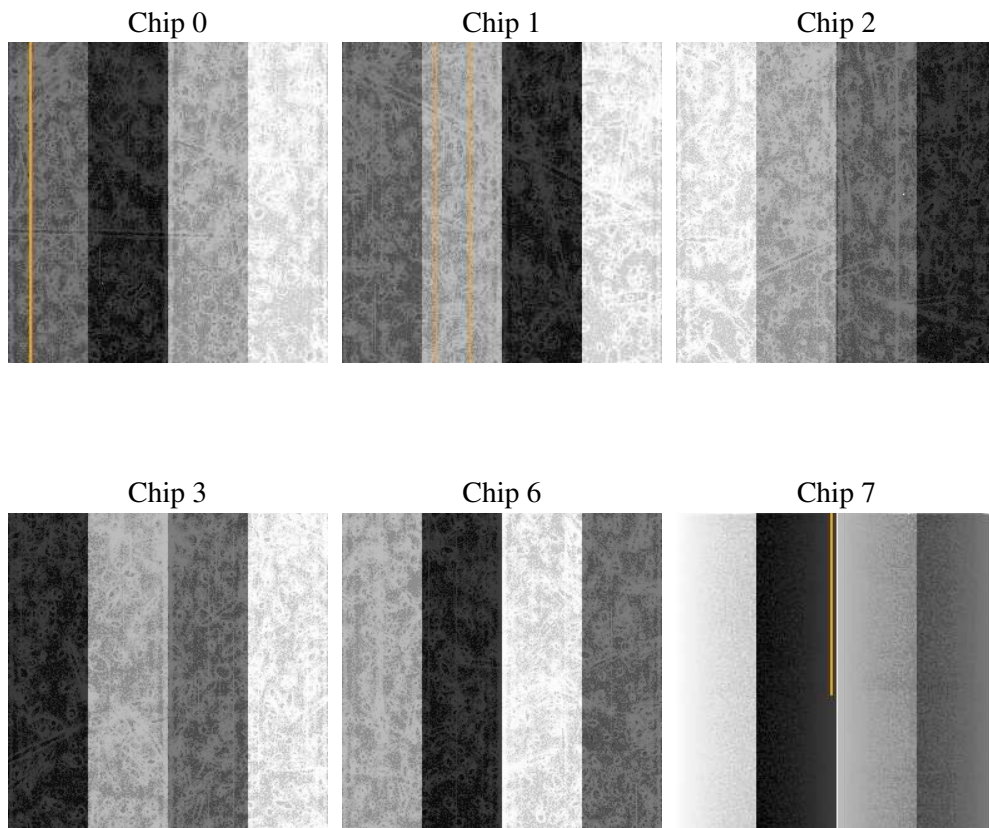
2 OBI

2.1 OBI

2.1.1 Images



2.1.2 Bias



2.1.3 Parameters

| | |
|----------|---------------------|
| obi_num | 0 |
| ascdsver | 7.6.7.1 |
| caldsver | 3.2.1 |
| date | 2006-04-07T19:44:29 |
| revision | 2 |

| | |
|----------------|-----------------|
| sched_exp_time | 0.0 |
| ontime | 7801.0851112902 |
| ontime0 | 6410.7131456435 |
| ontime1 | 6546.8328408301 |
| ontime2 | 6174.1227952838 |
| ontime3 | 6368.5804223716 |
| ontime6 | 6767.2189776897 |
| ontime7 | 7801.0851112902 |
| l1events | 1411171 |

2.1.4 Events

| | ccd 0 | ccd 1 | ccd 2 | ccd 3 | ccd 6 | ccd 7 |
|-----------------|--------|--------|--------|--------|--------|--------|
| level 1 events | 219909 | 223711 | 216131 | 223555 | 243575 | 284290 |
| rejected events | 48606 | 48500 | 48685 | 51812 | 53709 | 60897 |
| rejected % | 22% | 21% | 22% | 23% | 22% | 21% |

| | ccd 0 | ccd 1 | ccd 2 | ccd 3 | ccd 6 | ccd 7 |
|----------------|-------|-------|-------|-------|--------|-------|
| grade 0 events | 94354 | 95030 | 94082 | 96370 | 102690 | 36393 |
| | 42% | 42% | 43% | 43% | 42% | 12% |
| grade 1 events | 546 | 458 | 646 | 622 | 504 | 110 |
| | 0% | 0% | 0% | 0% | 0% | 0% |
| grade 2 events | 29765 | 31545 | 27964 | 29104 | 32451 | 68733 |
| | 13% | 14% | 12% | 13% | 13% | 24% |
| grade 3 events | 11000 | 11151 | 10941 | 11201 | 11912 | 15214 |
| | 5% | 4% | 5% | 5% | 4% | 5% |
| grade 4 events | 11033 | 11090 | 10966 | 11295 | 11833 | 14879 |
| | 5% | 4% | 5% | 5% | 4% | 5% |
| grade 5 events | 2971 | 3120 | 2671 | 3118 | 3470 | 6975 |
| | 1% | 1% | 1% | 1% | 1% | 2% |
| grade 6 events | 25151 | 26395 | 23493 | 23773 | 30980 | 88174 |
| | 11% | 11% | 10% | 10% | 12% | 31% |
| grade 7 events | 45089 | 44922 | 45368 | 48072 | 49735 | 53812 |
| | 20% | 20% | 20% | 21% | 20% | 18% |

2.2 Compared Parameters

| Parameter | Planned | Actual | Parameter | Planned | Actual |
|-----------------------------------|---------------------|----------------------|---------------------------------|-----------|---------|
| Instrument | ACIS | ACIS | Obspar format version number | 6 | 6 |
| Detector | ACIS-012367 | ACIS-012367 | Obspar file type | PREDICTED | ACTUAL |
| Grating | NONE | NONE | Obspar update status | NONE | UPDATED |
| Data mode | FAINT | FAINT | On-chip summing requested | N | N |
| Observation mode | SECONDARY | SECONDARY | Subarray requested | NONE | NONE |
| Pointing RA | 0 | 221.1923707024983 | Alternating exposures requested | N | N |
| Pointing Dec | 0 | -15.17242703278104 | Primary exposure time | 3.2 | 3.2 |
| Pointing Roll | 0.0 | 72.02607264985564 | | | |
| SIM focus pos (mm) | -0.782348 | -0.7809083437167272 | | | |
| SIM defocus (mm) | 0 | 0.7524282956875696 | | | |
| SIM translation stage pos (mm) | -233.592463 | 250.466033080201 | | | |
| SIM translation stage offset (mm) | 0 | -0.01005468664627074 | | | |
| Observation start time | 220231817.555785 | 220231816.53078 | | | |
| Observation start date | 2004-12-23T23:30:18 | 2004-12-23T23:30:16 | | | |
| Observation end time | 220246259.806436 | 220246258.78143 | | | |
| Observation end date | 2004-12-24T03:31:00 | 2004-12-24T03:30:58 | | | |
| Read mode | TIMED | TIMED | | | |

2.3 Aspect

2.4 Star Slots

2.5 FID Slots

A Summary

A.1 Status

| | |
|----------------------------|---------------|
| V&V Scientist | Beth Sundheim |
| V&V Date (YYYY-MM-DD) | 2006.04.07 |
| V&V Edition | 1 |
| V&V Disposition and Status | OK |
| V&V Charge Time | 7.80014888 |

A.2 Comments