

V&V Reference Report

L2 ASCDS Version : 8.4.5

Observation 60889 - L2 Version 3
Chandra X-Ray Center

L2 Processing Date : Oct 20 2012

Contents

1	Front	2
2	OBI Primary	3
2.1	OBI	3
2.1.1	Images	3
2.1.2	Bias	3
2.1.3	Parameters	4
2.1.4	Events	4
2.2	Compared Parameters	5
2.3	Star Slots	6
2.4	FID Slots	6
3	OBI Secondary	6
3.1	OBI	6
3.1.1	Images	6
3.1.2	Bias	6
3.1.3	Parameters	7
3.1.4	Events	7
A	Summary	8
A.1	Status	8
A.2	Comments	8

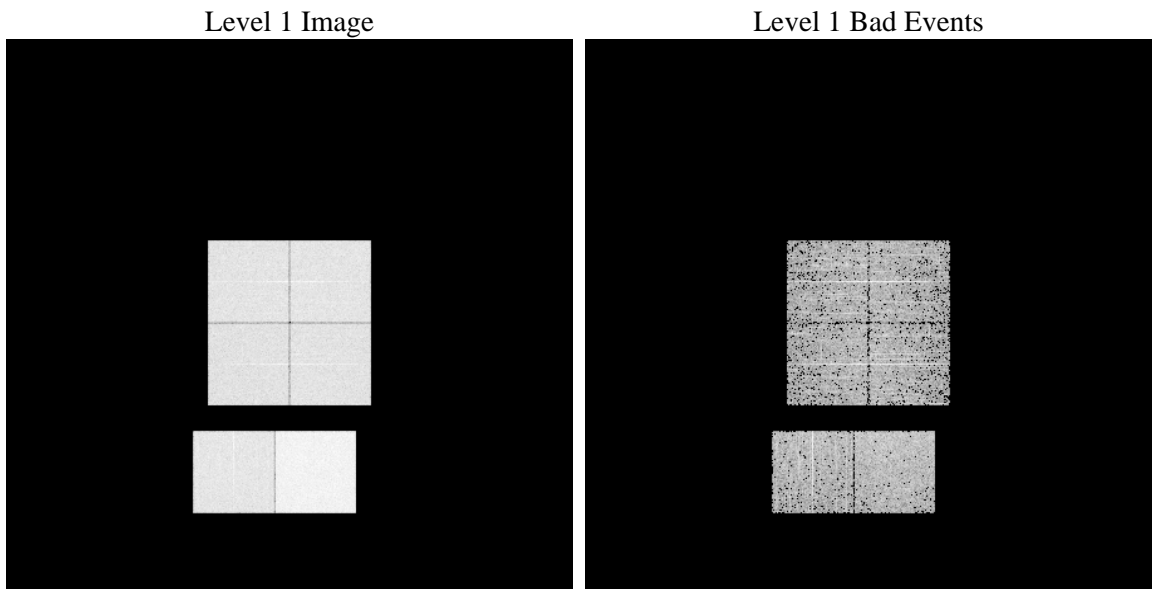
1 Front

seq_num	 	Sequence number
obs_id	60889	Observation id
title	ACIS-012367 diagnostics	Proposal title
observer	CHANDRA engineering request/realtime commanding	Principal investig
object	 	Source name
dtcycle	0	
cycle	P	events are from which exps? P[rimary] S[econdar
ra_targ	0.0	Observer's specified target RA [deg]
dec_targ	0.0	Observer's specified target Dec [deg]
ra_nom	159.99733196337	Nominal RA [deg]
dec_nom	0.028458183676559	Nominal Dec [deg]
roll_nom	62.437136254812	Nominal Roll [deg]
revision	3	Processing version of data
ontime	4210.9138561487	Sum of GTIs [s]
livetime	4168.1486509896	Livetime [s]
ontime0	2582.3747348189	Sum of GTIs [s]
ontime1	2647.0313748717	Sum of GTIs [s]
ontime2	2356.0764946342	Sum of GTIs [s]
ontime3	2440.9383347034	Sum of GTIs [s]
ontime6	2632.709448278	Sum of GTIs [s]
ontime7	4210.9138561487	Sum of GTIs [s]
l2events	704626	Number of level 2 events

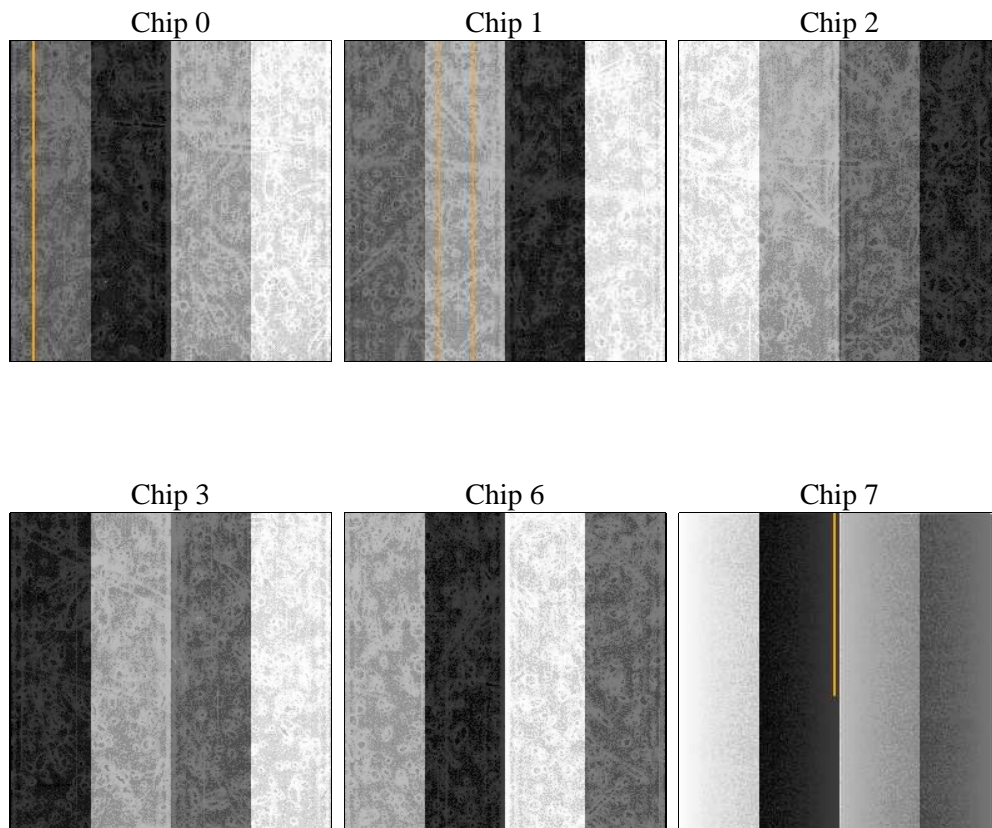
2 OBI Primary

2.1 OBI

2.1.1 Images



2.1.2 Bias



2.1.3 Parameters

obi_num	0	Obi number	sched_exp_time	0.0	[s] Scheduled observation exposure time
ascdsver	8.4.5	Processing system revision	ontime	4210.9138561487	Sum of GTIs [s]
caldbver	4.5.2	 	ontime0	2582.3747348189	Sum of GTIs [s]
date	2012-10-20T14:34:11	Date and time of file creation	ontime1	2647.0313748717	Sum of GTIs [s]
revision	3	Processing version of data	ontime2	2356.0764946342	Sum of GTIs [s]
			ontime3	2440.9383347034	Sum of GTIs [s]
			ontime6	2632.709448278	Sum of GTIs [s]
			ontime7	4210.9138561487	Sum of GTIs [s]
			l1events	839079	Number of level 1 events

2.1.4 Events

	ccd 0	ccd 1	ccd 2	ccd 3	ccd 6	ccd 7		ccd 0	ccd 1	ccd 2	ccd 3	ccd 6	ccd 7
level 1 events	125706	128705	116530	121545	136196	210397	grade 0 events	60553	62024	57157	59247	64199	48674
rejected events	16096	15897	15384	16400	18119	20078		48%	48%	49%	48%	47%	23%
rejected %	12%	12%	13%	13%	13%	9%	grade 1 events	360	378	364	368	370	143
								0%	0%	0%	0%	0%	0%
							grade 2 events	19110	19887	16884	17729	20392	42230
								15%	15%	14%	14%	14%	20%
							grade 3 events	7106	7183	6341	6856	7366	19283
								5%	5%	5%	5%	5%	9%
							grade 4 events	7107	7155	6622	6971	7328	19169
								5%	5%	5%	5%	5%	9%
							grade 5 events	1163	1223	1141	1182	1365	4186
								0%	0%	0%	0%	1%	1%
							grade 6 events	15914	16559	14142	14342	18969	60963
								12%	12%	12%	11%	13%	28%
							grade 7 events	14393	14296	13879	14850	16207	15749
								11%	11%	11%	12%	11%	7%

2.2 Compared Parameters

Parameter	Planned	Actual	Parameter	Planned	Actual
Instrument	ACIS	ACIS	Obspar format version number	7	7
Detector	ACIS-012367	ACIS-012367	Obspar file type	PREDICTED	ACTUAL
Grating	NONE	NONE	Obspar update status	NONE	UPDATED
Data mode	FAINT	FAINT	On-chip summing requested	N	N
Observation mode	SECONDARY	SECONDARY	Subarray requested	NONE	NONE
[deg] Pointing RA	0	159.9973319633706	Alternating exposures requested	N	Y
[deg] Pointing Dec	0	0.02845818367655906	[s] Primary exposure time	0.000000	4
[deg] Pointing Roll	0.0	62.43713625481187	[s] Secondary exposure time	N/A	3.2
[mm] SIM focus pos	-0.782348	-0.6828225247311905	Duty cycle	N/A	1
[mm] SIM defocus	0	0.8505141146731063			
[mm] SIM translation stage pos	-233.592463	250.466033080201			
[mm] SIM translation stage offset	0	-0.01005468664627074			
[s] Observation start time (MET)	158318311.415074	158318310.39035			
Observation start date	2003-01-07T09:18:31	2003-01-07T09:18:30			
[s] Observation end time (MET)	158353142.966531	158353141.94181			
Observation end date	2003-01-07T18:59:03	2003-01-07T18:59:01			
Read mode	TIMED	TIMED			

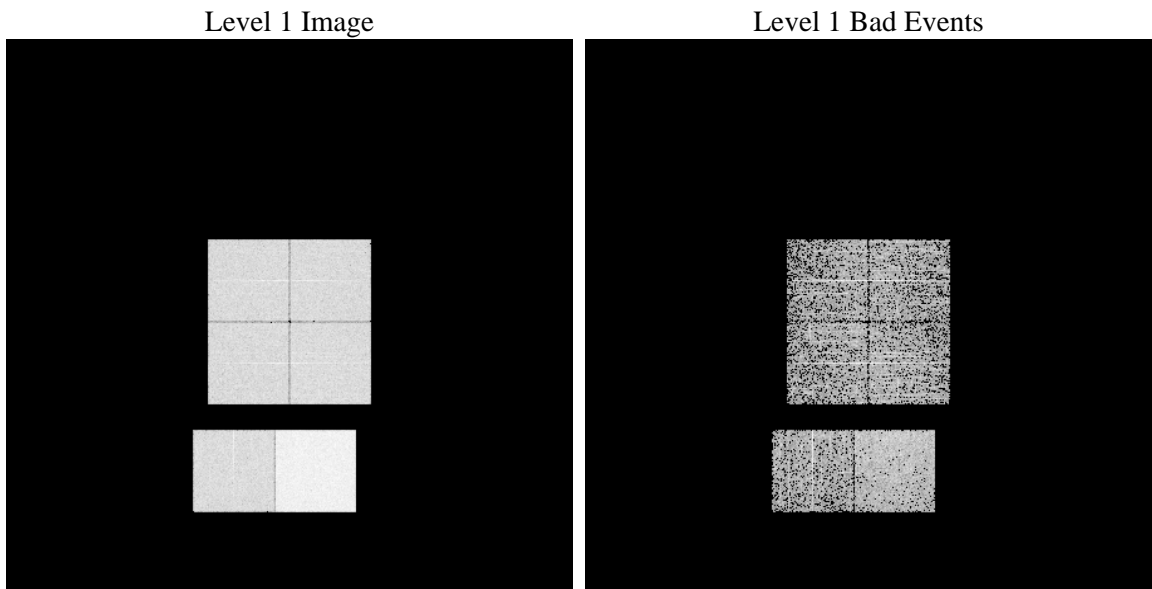
2.3 Star Slots

2.4 FID Slots

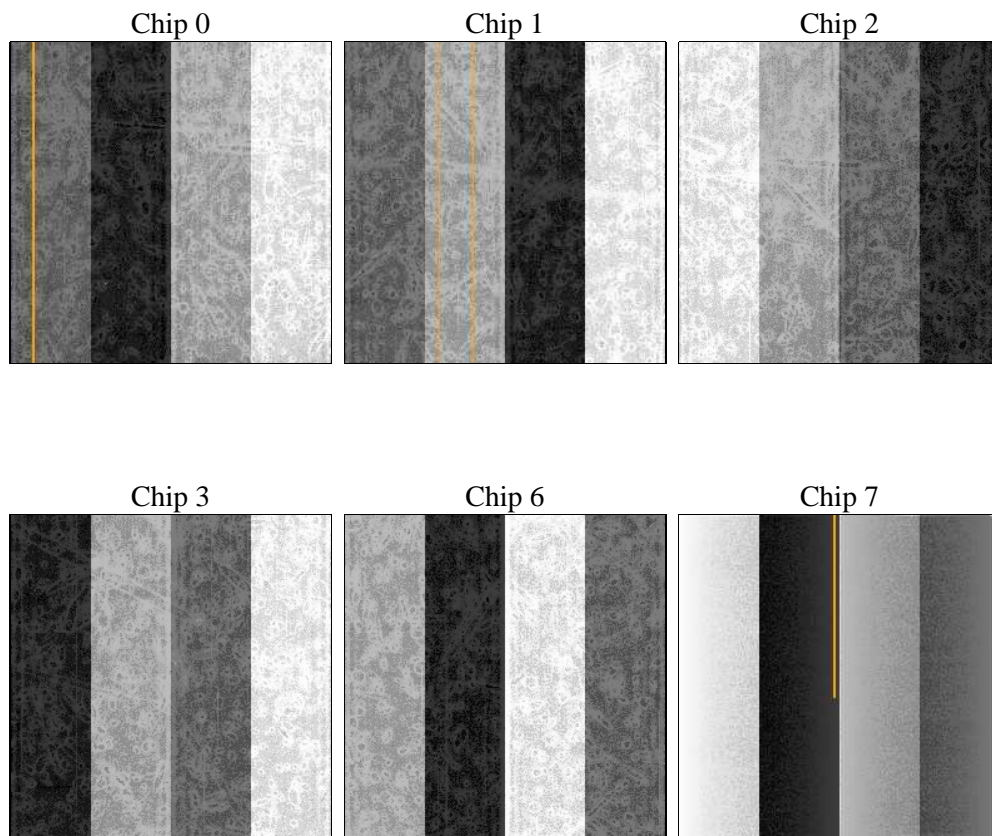
3 OBI Secondary

3.1 OBI

3.1.1 Images



3.1.2 Bias



3.1.3 Parameters

obi_num	0	Obi number	sched_exp_time	0.0	[s] Scheduled observation exposure time
ascdsver	8.4.5	Processing system revision	ontime	3381.2728634477	Sum of GTIs [s]
caldsver	4.5.2	 	ontime0	1570.8199418187	Sum of GTIs [s]
date	2012-10-20T14:32:48	Date and time of file creation	ontime1	1528.6453819573	Sum of GTIs [s]
revision	3	Processing version of data	ontime2	1525.3633019626	Sum of GTIs [s]
			ontime3	1583.6609818041	Sum of GTIs [s]
			ontime6	1563.0494282842	Sum of GTIs [s]
			ontime7	3381.2728634477	Sum of GTIs [s]
			l1events	563509	Number of level 1 events

3.1.4 Events

	ccd 0	ccd 1	ccd 2	ccd 3	ccd 6	ccd 7
level 1 events	77083	76789	77058	80883	81719	169977
rejected events	9782	10804	10810	11540	11129	17269
rejected %	12%	14%	14%	14%	13%	10%

	ccd 0	ccd 1	ccd 2	ccd 3	ccd 6	ccd 7
grade 0 events	37160	36400	37370	39110	38621	38297
	48%	47%	48%	48%	47%	22%
grade 1 events	206	161	226	212	189	82
	0%	0%	0%	0%	0%	0%
grade 2 events	11786	11697	11002	11872	12135	33943
	15%	15%	14%	14%	14%	19%
grade 3 events	4309	4154	4389	4422	4386	15325
	5%	5%	5%	5%	5%	9%
grade 4 events	4353	4060	4234	4500	4285	15300
	5%	5%	5%	5%	5%	9%
grade 5 events	767	744	661	785	754	3457
	0%	0%	0%	0%	0%	2%
grade 6 events	9693	9674	9253	9439	11163	49843
	12%	12%	12%	11%	13%	29%
grade 7 events	8809	9899	9923	10543	10186	13730
	11%	12%	12%	13%	12%	8%

A Summary

A.1 Status

V&V Scientist	Beth Sundheim
V&V Date (YYYY-MM-DD)	2012.11.21
V&V Edition	1
V&V Disposition and Status	OK
V&V Charge Time	7.5921867195964

A.2 Comments