

V&V Reference Report

L2 ASCDS Version : 7.6.9

Observation 60886 - L2 Version 001
Chandra X-Ray Center

L2 Processing Date : Oct 18 2006

Contents

1	Front	2
2	OBI	3
2.1	OBI	3
2.1.1	Images	3
2.1.2	Bias	3
2.1.3	Parameters	4
2.1.4	Events	4
2.2	Compared Parameters	5
2.3	Aspect	6
2.4	Star Slots	8
2.5	FID Slots	8
A	Summary	9
A.1	Status	9
A.2	Comments	9

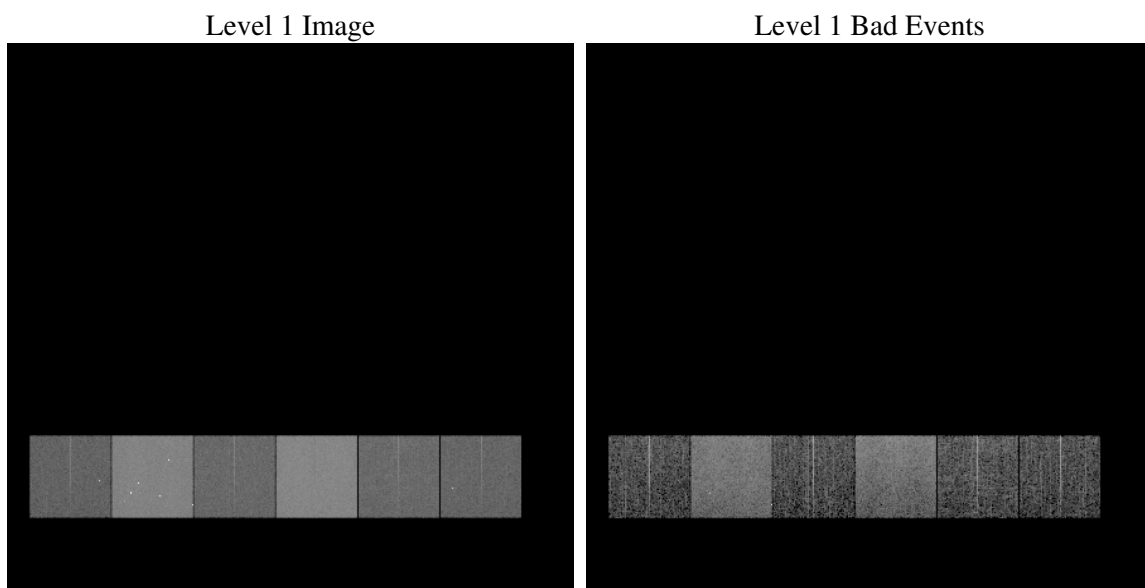
1 Front

seq_num	
obs_id	60886
title	ACIS-456789 diagnostics
observer	CHANDRA engineering request/realtime commanding
object	
dtcycle	0
cycle	P
ra_targ	0.0
dec_targ	0.0
ra_nom	174.9964054842
dec_nom	-3.9716237762899
roll_nom	64.277131598524
revision	2
ontime	7788.7999709845
livetime	7690.1734958996
ontime4	2999.0954651237
ontime5	7788.7999709845
ontime6	3358.8076129258
ontime7	7788.7999709845
ontime8	3384.8179234862
ontime9	3190.1516885757
l2events	1142185

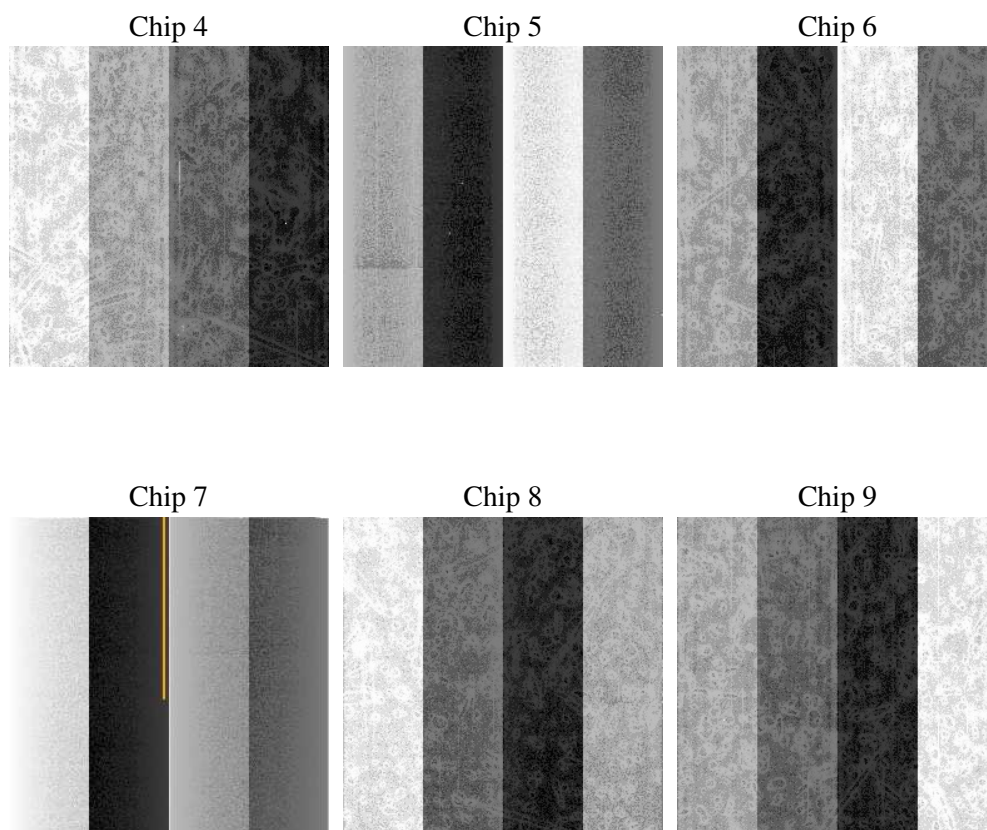
2 OBI

2.1 OBI

2.1.1 Images



2.1.2 Bias



2.1.3 Parameters

obi_num	0
ascdsver	7.6.9
caldsver	3.2.3
date	2006-10-19T02:40:15
revision	2

sched_exp_time	0.0
ontime	7791.3732656837
ontime4	3001.1984009147
ontime5	7791.3732656837
ontime6	3360.9515887201
ontime7	7791.3732656837
ontime8	3386.8798193038
ontime9	3192.41878438
l1events	1424873

2.1.4 Events

	ccd 4	ccd 5	ccd 6	ccd 7	ccd 8	ccd 9
level 1 events	148358	370023	174872	390627	179830	161163
rejected events	24146	62166	24844	56931	27654	23509
rejected %	16%	16%	14%	14%	15%	14%

	ccd 4	ccd 5	ccd 6	ccd 7	ccd 8	ccd 9
grade 0 events	73007	39344	82516	57796	83948	76576
	49%	10%	47%	14%	46%	47%
grade 1 events	583	238	372	146	412	439
	0%	0%	0%	0%	0%	0%
grade 2 events	19110	145329	25805	103052	26437	23264
	12%	39%	14%	26%	14%	14%
grade 3 events	8247	9795	9265	23694	9745	8709
	5%	2%	5%	6%	5%	5%
grade 4 events	8257	9296	9190	23291	9724	8856
	5%	2%	5%	5%	5%	5%
grade 5 events	1450	7059	1741	7179	1939	1627
	0%	1%	0%	1%	1%	1%
grade 6 events	15729	104229	23402	125990	22480	20377
	10%	28%	13%	32%	12%	12%
grade 7 events	21975	54733	22581	49479	25145	21315
	14%	14%	12%	12%	13%	13%

2.2 Compared Parameters

Parameter	Planned	Actual	Parameter	Planned	Actual
Instrument	ACIS	ACIS	Obspar format version number	6	6
Detector	ACIS-456789	ACIS-456789	Obspar file type	PREDICTED	ACTUAL
Grating	NONE	NONE	Obspar update status	NONE	UPDATED
Data mode	FAINT	FAINT	On-chip summing requested	N	N
Observation mode	SECONDARY	SECONDARY	Subarray requested	NONE	NONE
Pointing RA	0	174.9964054842041	Alternating exposures requested	N	N
Pointing Dec	0	-3.971623776289921	Primary exposure time	0.000000	3.2
Pointing Roll	0.0	64.27713159852362			
SIM focus pos (mm)	-0.684267	-0.7809083437167272			
SIM defocus (mm)	0	0.7524282956875696			
SIM translation stage pos (mm)	-190.132523	250.466033080201			
SIM translation stage offset (mm)	0	-0.01005468664627074			
Observation start time	158550088.524758	158550087.50004			
Observation start date	2003-01-10T01:41:29	2003-01-10T01:41:27			
Observation end time	158561638.225241	158561637.20053			
Observation end date	2003-01-10T04:53:58	2003-01-10T04:53:57			
Read mode	TIMED	TIMED			

2.3 Aspect

2.4 Star Slots

2.5 FID Slots

A Summary

A.1 Status

V&V Scientist	Jen Lauer
V&V Date (YYYY-MM-DD)	2006.10.19
V&V Edition	1
V&V Disposition and Status	OK
V&V Charge Time	7.78879997

A.2 Comments

The ACIS focal plane temperature was above calibration limits for the entire observation.