

V&V Reference Report

L2 ASCDS Version : 7.6.8

Observation 60870 - L2 Version 001
Chandra X-Ray Center

L2 Processing Date : Jul 19 2006

Contents

1	Front	2
2	OBI	3
2.1	OBI	3
2.1.1	Images	3
2.1.2	Bias	3
2.1.3	Parameters	4
2.1.4	Events	4
2.2	Compared Parameters	5
2.3	Aspect	6
2.4	Star Slots	8
2.5	FID Slots	8
A	Summary	9
A.1	Status	9
A.2	Comments	9

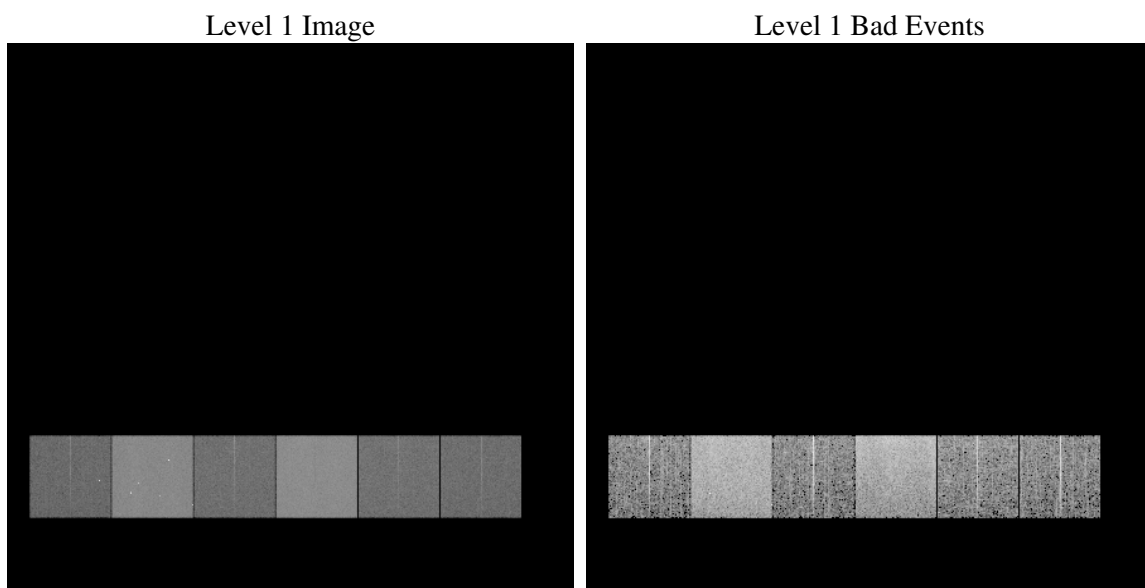
1 Front

seq_num	
obs_id	60870
title	ACIS-456789 diagnostics
observer	CHANDRA engineering request/realtime commanding
object	
dtcycle	0
cycle	P
ra_targ	0.0
dec_targ	0.0
ra_nom	259.99087428748
dec_nom	-10.972832021156
roll_nom	75.372561362237
revision	2
ontime	7789.1373745501
livetime	7690.5066270581
ontime4	3141.7019233406
ontime5	7789.1784145534
ontime6	3494.9322202802
ontime7	7789.1373745501
ontime8	3611.1479001343
ontime9	3355.4456859529
l2events	1160710

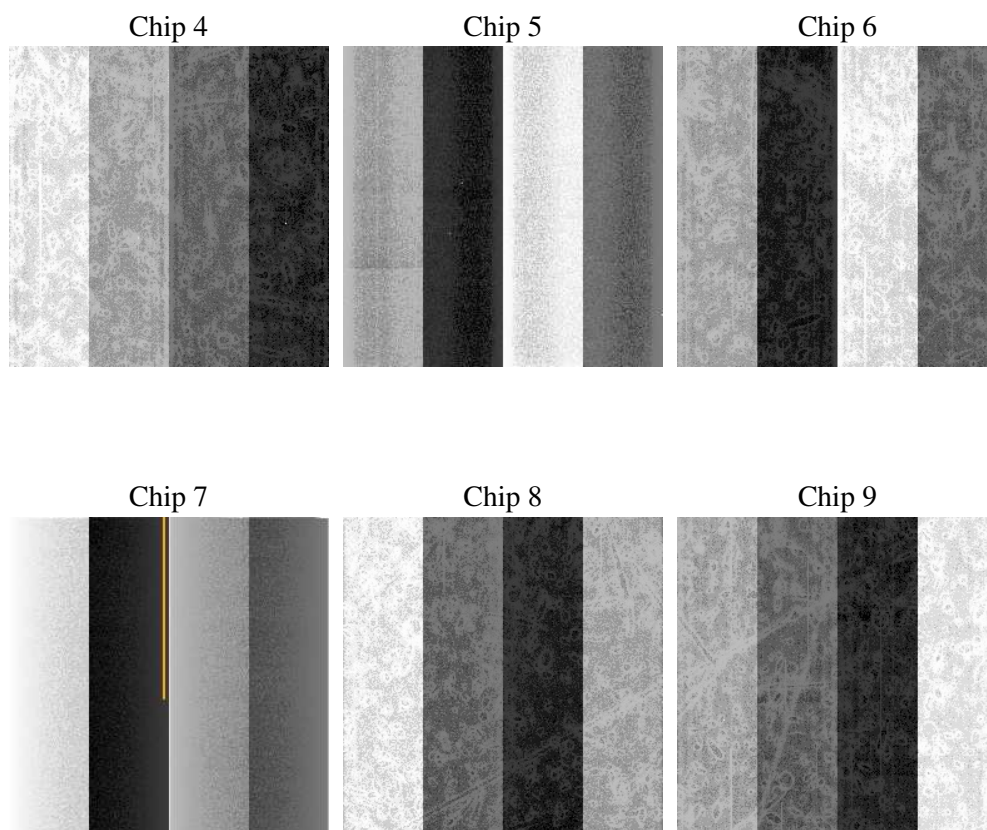
2 OBI

2.1 OBI

2.1.1 Images



2.1.2 Bias



2.1.3 Parameters

obi_num	0
ascdsver	7.6.8
caldbver	3.2.2
date	2006-07-19T17:14:44
revision	2

sched_exp_time	0.0
ontime	7791.360476613
ontime4	3143.8019053936
ontime5	7791.360476613
ontime6	3497.0732423365
ontime7	7791.360476613
ontime8	3613.7493959367
ontime9	3357.7098280191
l1events	1423526

2.1.4 Events

	ccd 4	ccd 5	ccd 6	ccd 7	ccd 8	ccd 9
level 1 events	151754	354218	178446	386138	186459	166511
rejected events	23001	57882	23661	51995	25641	23393
rejected %	15%	16%	13%	13%	13%	14%

	ccd 4	ccd 5	ccd 6	ccd 7	ccd 8	ccd 9
grade 0 events	75594	38315	84823	60345	89208	79024
	49%	10%	47%	15%	47%	47%
grade 1 events	534	262	417	158	453	424
	0%	0%	0%	0%	0%	0%
grade 2 events	20100	139992	26620	101504	27881	24709
	13%	39%	14%	26%	14%	14%
grade 3 events	8499	9982	9608	24650	10113	9057
	5%	2%	5%	6%	5%	5%
grade 4 events	8471	9695	9612	24357	10315	9238
	5%	2%	5%	6%	5%	5%
grade 5 events	1492	6215	1690	6682	2019	1672
	0%	1%	0%	1%	1%	1%
grade 6 events	16223	98495	24249	123436	23467	21208
	10%	27%	13%	31%	12%	12%
grade 7 events	20841	51262	21427	45006	23003	21179
	13%	14%	12%	11%	12%	12%

2.2 Compared Parameters

Parameter	Planned	Actual	Parameter	Planned	Actual
Instrument	ACIS	ACIS	Obspar format version number	6	6
Detector	ACIS-456789	ACIS-456789	Obspar file type	PREDICTED	ACTUAL
Grating	NONE	NONE	Obspar update status	NONE	UPDATED
Data mode	FAINT	FAINT	On-chip summing requested	N	N
Observation mode	SECONDARY	SECONDARY	Subarray requested	NONE	NONE
Pointing RA	0	259.9908742874752	Alternating exposures requested	N	N
Pointing Dec	0	-10.97283202115573	Primary exposure time	0.000000	3.2
Pointing Roll	0.0	75.37256136223697			
SIM focus pos (mm)	-0.684267	-0.6828225247311905			
SIM defocus (mm)	0	0.8505141146731063			
SIM translation stage pos (mm)	-190.132523	250.466033080201			
SIM translation stage offset (mm)	0	-0.01005468664627074			
Observation start time	160141845.9414	160141844.91669			
Observation start date	2003-01-28T11:50:46	2003-01-28T11:50:44			
Observation end time	160151726.941814	160151725.9171			
Observation end date	2003-01-28T14:35:27	2003-01-28T14:35:25			
Read mode	TIMED	TIMED			

2.3 Aspect

2.4 Star Slots

2.5 FID Slots

A Summary

A.1 Status

V&V Scientist	Jen Lauer
V&V Date (YYYY-MM-DD)	2006.07.19
V&V Edition	1
V&V Disposition and Status	OK
V&V Charge Time	7.78913737

A.2 Comments