

# V&V Reference Report

## L2 ASCDS Version : 7.6.9

Observation 60855 - L2 Version 001  
Chandra X-Ray Center

L2 Processing Date : Sep 19 2006

## Contents

<b>1</b>	<b>Front</b>	<b>2</b>
<b>2</b>	<b>OBI</b>	<b>3</b>
2.1	OBI . . . . .	3
2.1.1	Images . . . . .	3
2.1.2	Bias . . . . .	3
2.1.3	Parameters . . . . .	4
2.1.4	Events . . . . .	4
2.2	Compared Parameters . . . . .	5
2.3	Aspect . . . . .	6
2.4	Star Slots . . . . .	8
2.5	FID Slots . . . . .	8
<b>A</b>	<b>Summary</b>	<b>9</b>
A.1	Status . . . . .	9
A.2	Comments . . . . .	9

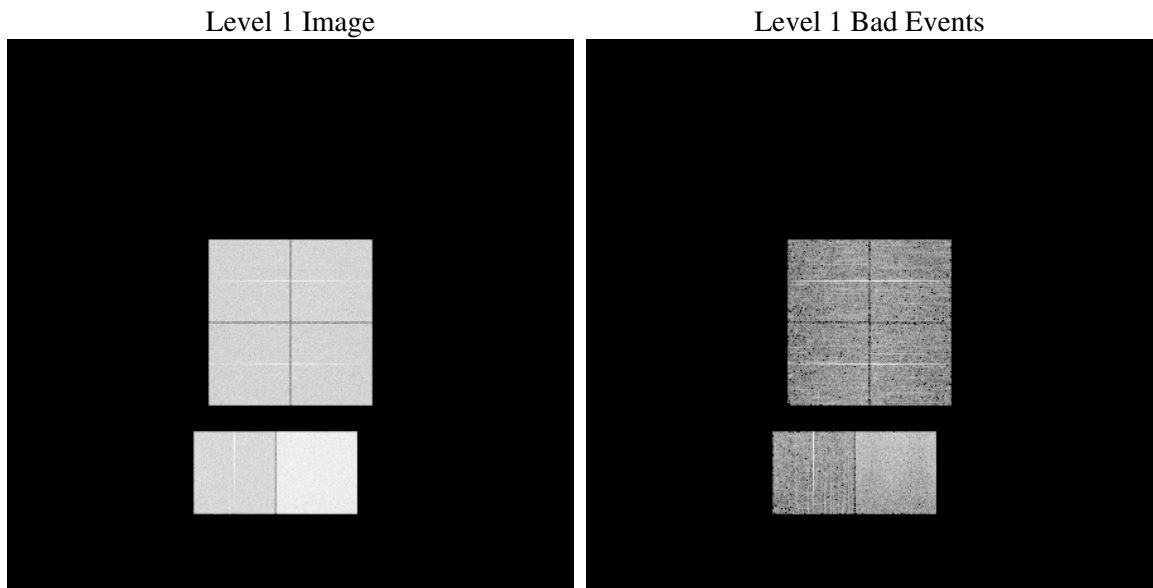
# 1 Front

seq_num	&#160
obs_id	60855
title	ACIS-012367 diagnostics
observer	CHANDRA engineering request/realtime commanding
object	&#160
dtcycle	0
cycle	P
ra_targ	0.0
dec_targ	0.0
ra_nom	161.93943296312
dec_nom	61.99691075441
roll_nom	153.35831673605
revision	2
ontime	7797.767225951
livetime	7699.0272020842
ontime0	4119.2921774983
ontime1	4242.4916615188
ontime2	3947.575659126
ontime3	3966.8832981586
ontime6	4459.654124558
ontime7	7797.767225951
l2events	1168843

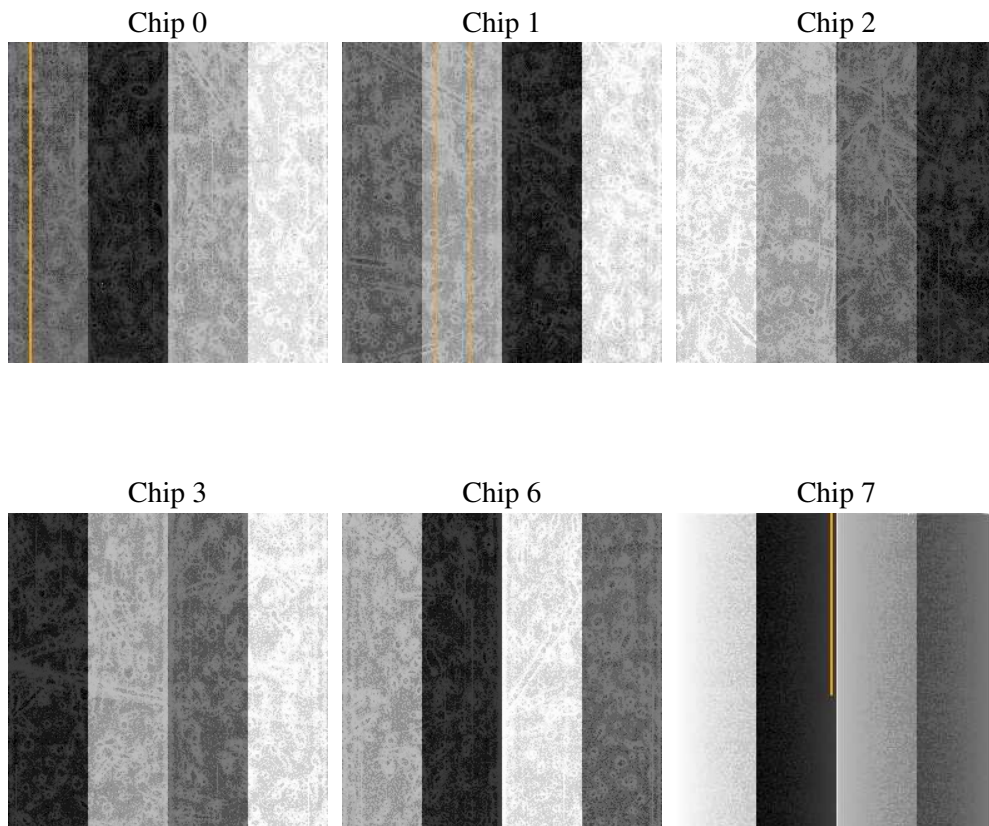
## 2 OBI

### 2.1 OBI

#### 2.1.1 Images



#### 2.1.2 Bias



### 2.1.3 Parameters

obi_num	0
ascdsver	7.6.9
caldbver	3.2.3
date	2006-09-19T16:28:52
revision	2

sched_exp_time	0.0
ontime	7797.8646672368
ontime0	4119.3485787809
ontime1	4242.5070227981
ontime2	3947.575659126
ontime3	3967.0217794478
ontime6	4459.654124558
ontime7	7797.8646672368
l1events	1427680

### 2.1.4 Events

	ccd 0	ccd 1	ccd 2	ccd 3	ccd 6	ccd 7
level 1 events	202263	209316	196185	198522	229465	391929
rejected events	28565	29832	28586	29553	32582	56252
rejected %	14%	14%	14%	14%	14%	14%

	ccd 0	ccd 1	ccd 2	ccd 3	ccd 6	ccd 7
grade 0 events	95895	98322	94532	95206	107354	60322
	47%	46%	48%	47%	46%	15%
grade 1 events	521	473	577	596	488	140
	0%	0%	0%	0%	0%	0%
grade 2 events	30143	32037	27683	28560	33800	101829
	14%	15%	14%	14%	14%	25%
grade 3 events	11015	11283	10884	10895	12240	24696
	5%	5%	5%	5%	5%	6%
grade 4 events	11127	11356	11045	10866	12003	24036
	5%	5%	5%	5%	5%	6%
grade 5 events	1967	1983	1862	2015	2241	7045
	0%	0%	0%	1%	0%	1%
grade 6 events	25518	26486	23455	23442	31486	124794
	12%	12%	11%	11%	13%	31%
grade 7 events	26077	27376	26147	26942	29853	49067
	12%	13%	13%	13%	13%	12%

## 2.2 Compared Parameters

Parameter	Planned	Actual	Parameter	Planned	Actual
Instrument	ACIS	ACIS	Obspar format version number	6	6
Detector	ACIS-012367	ACIS-012367	Obspar file type	PREDICTED	ACTUAL
Grating	NONE	NONE	Obspar update status	NONE	UPDATED
Data mode	FAINT	FAINT	On-chip summing requested	N	N
Observation mode	SECONDARY	SECONDARY	Subarray requested	NONE	NONE
Pointing RA	0	161.939432963117	Alternating exposures requested	N	N
Pointing Dec	0	61.99691075441003	Primary exposure time	3.2	3.2
Pointing Roll	0.0	153.3583167360529			
SIM focus pos (mm)	-0.782348	-0.6828225247311905			
SIM defocus (mm)	0	0.8505141146731063			
SIM translation stage pos (mm)	-233.592463	250.466033080201			
SIM translation stage offset (mm)	0	-0.01005468664627074			
Observation start time	161063372.230092	161063371.20537			
Observation start date	2003-02-08T03:49:32	2003-02-08T03:49:31			
Observation end time	161096906.131501	161096905.10678			
Observation end date	2003-02-08T13:08:26	2003-02-08T13:08:25			
Read mode	TIMED	TIMED			

## 2.3 Aspect



## 2.4 Star Slots

## 2.5 FID Slots

# A Summary

## A.1 Status

V&V Scientist	Beth Sundheim
V&V Date (YYYY-MM-DD)	2006.09.20
V&V Edition	1
V&V Disposition and Status	OK
V&V Charge Time	7.79776722

## A.2 Comments

Focal plane temperature is warmer than -118 degrees during entire observation. The ACIS calibrations are not verified or necessarily applicable for focal plane temperatures warmer than -118 degrees.