

V&V Reference Report

L2 ASCDS Version : 8.4.5

Observation 60841 - L2 Version 3
Chandra X-Ray Center

L2 Processing Date : Oct 23 2012

Contents

1	Front	2
2	OBI	3
2.1	OBI	3
2.1.1	Images	3
2.1.2	Bias	3
2.1.3	Parameters	4
2.1.4	Events	4
2.2	Compared Parameters	5
2.3	Star Slots	6
2.4	FID Slots	6
A	Summary	7
A.1	Status	7
A.2	Comments	7

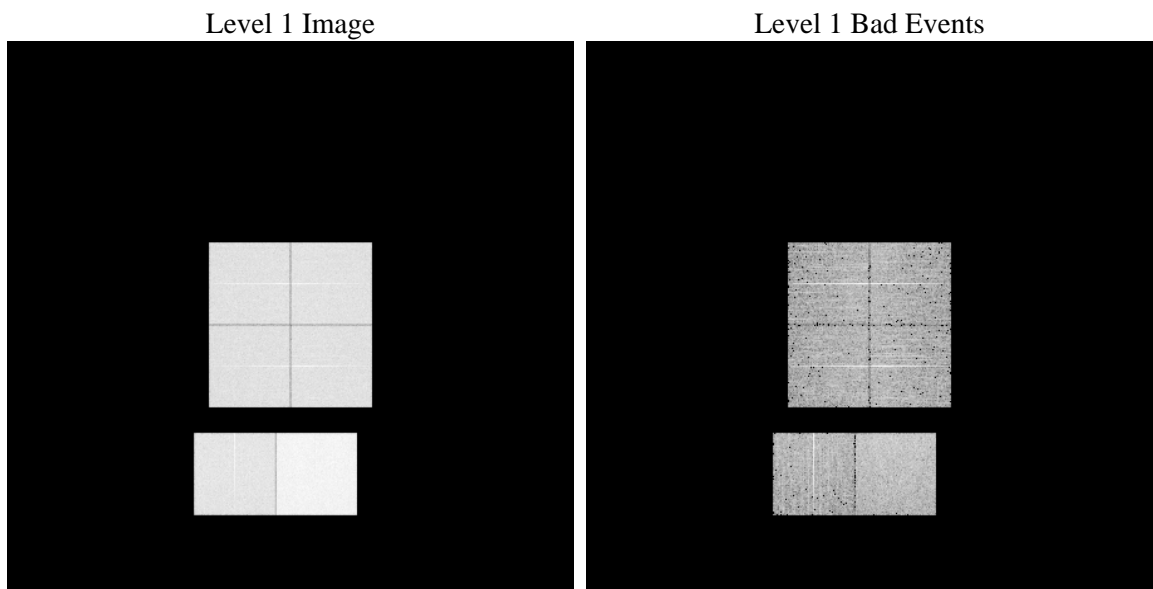
1 Front

seq_num	 	Sequence number
obs_id	60841	Observation id
title	ACIS-012367 diagnostics	Proposal title
observer	CHANDRA engineering request/realtime commanding	Principal investig
object	 	Source name
dtcycle	0	
cycle	P	events from which exps? Prim/Second/Both
ra_targ	0.0	Observer's specified target RA [deg]
dec_targ	0.0	Observer's specified target Dec [deg]
ra_nom	316.52319899358	Nominal RA [deg]
dec_nom	40.522503394497	Nominal Dec [deg]
roll_nom	19.012260176554	Nominal Roll [deg]
revision	3	Processing version of data
ontime	8462.5308095813	Sum of GTIs [s]
livetime	8355.3731489461	Livetime [s]
ontime0	4573.3321718276	Sum of GTIs [s]
ontime1	4719.134811312	Sum of GTIs [s]
ontime2	4401.4785798788	Sum of GTIs [s]
ontime3	4501.7852544785	Sum of GTIs [s]
ontime6	4991.2959561646	Sum of GTIs [s]
ontime7	8462.5308095813	Sum of GTIs [s]
l2events	1292344	Number of level 2 events

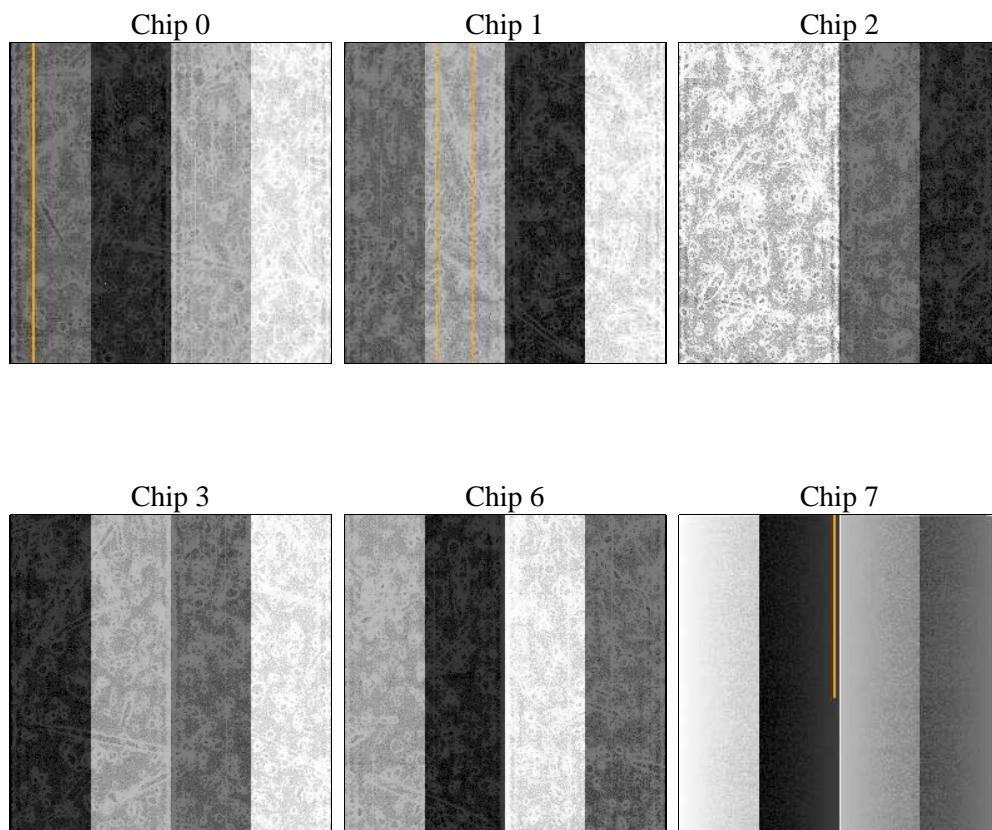
2 OBI

2.1 OBI

2.1.1 Images



2.1.2 Bias



2.1.3 Parameters

obi_num	0	Obi number	sched_exp_time	0.0	[s] Scheduled observation exposure time
ascdsver	8.4.5	Processing system revision	ontime	8462.5308095813	Sum of GTIs [s]
caldbver	4.5.2	 	ontime0	4573.3321718276	Sum of GTIs [s]
date	2012-10-23T07:28:58	Date and time of file creation	ontime1	4719.134811312	Sum of GTIs [s]
revision	3	Processing version of data	ontime2	4401.4785798788	Sum of GTIs [s]
			ontime3	4501.7852544785	Sum of GTIs [s]
			ontime6	4991.2959561646	Sum of GTIs [s]
			ontime7	8462.5308095813	Sum of GTIs [s]
			l1events	1546153	Number of level 1 events

2.1.4 Events

	ccd 0	ccd 1	ccd 2	ccd 3	ccd 6	ccd 7		ccd 0	ccd 1	ccd 2	ccd 3	ccd 6	ccd 7
level 1 events	219390	226005	214058	221020	250553	415127	grade 0 events	105189	108811	103927	106620	119264	93042
rejected events	29333	28974	29207	31333	32198	44111		47%	48%	48%	48%	47%	22%
rejected %	13%	12%	13%	14%	12%	10%	grade 1 events	579	484	597	608	560	262
								0%	0%	0%	0%	0%	0%
							grade 2 events	33282	34604	31239	32245	37583	81882
								15%	15%	14%	14%	15%	19%
							grade 3 events	12071	12453	11858	12568	13514	37921
								5%	5%	5%	5%	5%	9%
							grade 4 events	12146	12489	11917	12366	13533	36841
								5%	5%	5%	5%	5%	8%
							grade 5 events	2048	2110	1952	2093	2415	8252
								0%	0%	0%	0%	0%	1%
							grade 6 events	27508	28794	26038	25888	34594	121470
								12%	12%	12%	11%	13%	29%
							grade 7 events	26567	26260	26530	28632	29090	35457
								12%	11%	12%	12%	11%	8%

2.2 Compared Parameters

Parameter	Planned	Actual	Parameter	Planned	Actual
Instrument	ACIS	ACIS	Obspar format version number	7	7
Detector	ACIS-012367	ACIS-012367	Obspar file type	PREDICTED	ACTUAL
Grating	NONE	NONE	Obspar update status	NONE	UPDATED
Data mode	FAINT	FAINT	On-chip summing requested	N	N
Observation mode	SECONDARY	SECONDARY	Subarray requested	NONE	NONE
[deg] Pointing RA	0	316.5231989935794	Alternating exposures requested	N	N
[deg] Pointing Dec	0	40.5225033944966	[s] Primary exposure time	0.000000	3.2
[deg] Pointing Roll	0.0	19.01226017655376			
[mm] SIM focus pos	-0.782348	-0.6828225247311905			
[mm] SIM defocus	0	0.8505141146731063			
[mm] SIM translation stage pos	-233.592463	250.466033080201			
[mm] SIM translation stage offset	0	-0.01005468664627074			
[s] Observation start time (MET)	162005412.869651	162005411.84494			
Observation start date	2003-02-19T01:30:13	2003-02-19T01:30:11			
[s] Observation end time (MET)	162028042.820602	162028041.79589			
Observation end date	2003-02-19T07:47:23	2003-02-19T07:47:21			
Read mode	TIMED	TIMED			

2.3 Star Slots

2.4 FID Slots

A Summary

A.1 Status

V&V Scientist	Beth Sundheim
V&V Date (YYYY-MM-DD)	2012.11.29
V&V Edition	1
V&V Disposition and Status	OK
V&V Charge Time	8.4625308095813

A.2 Comments