

V&V Reference Report

L2 ASCDS Version : 7.6.8

Observation 60841 - L2 Version 001
Chandra X-Ray Center

L2 Processing Date : Jul 28 2006

Contents

1	Front	2
2	OBI	3
2.1	OBI	3
2.1.1	Images	3
2.1.2	Bias	3
2.1.3	Parameters	4
2.1.4	Events	4
2.2	Compared Parameters	5
2.3	Aspect	6
2.4	Star Slots	8
2.5	FID Slots	8
A	Summary	9
A.1	Status	9
A.2	Comments	9

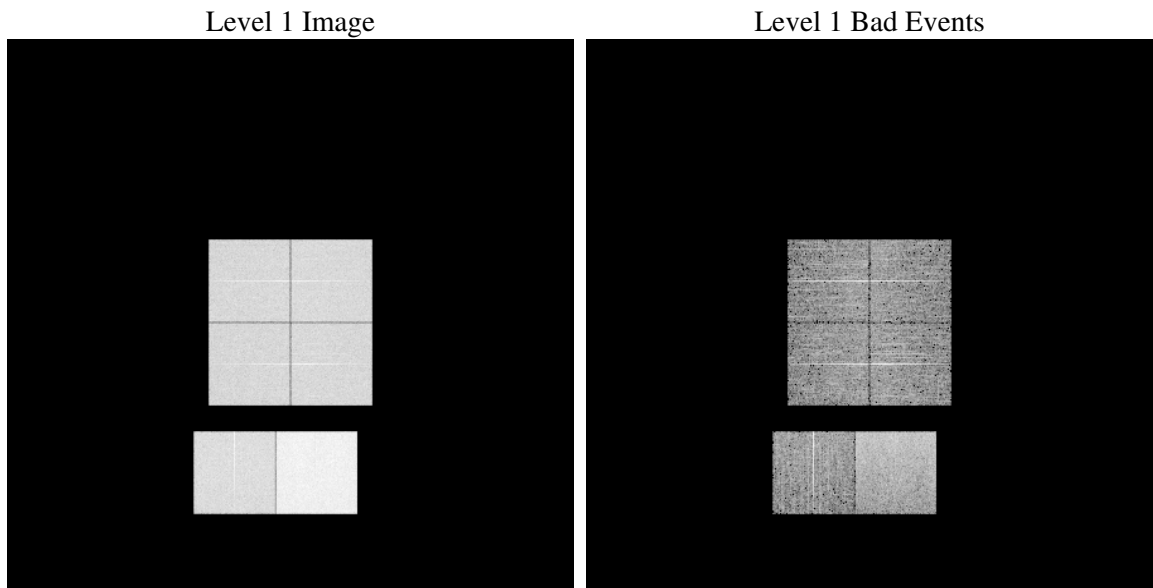
1 Front

seq_num	
obs_id	60841
title	ACIS-012367 diagnostics
observer	CHANDRA engineering request/realtime commanding
object	
dtcycle	0
cycle	P
ra_targ	0.0
dec_targ	0.0
ra_nom	316.52319899358
dec_nom	40.522503394497
roll_nom	19.012260176554
revision	2
ontime	8463.9999684691
livetime	8356.8237044595
ontime0	4574.8423707187
ontime1	4720.6860502064
ontime2	4403.0708587766
ontime3	4501.613373369
ontime6	4992.8959561586
ontime7	8463.9999684691
l2events	1279899

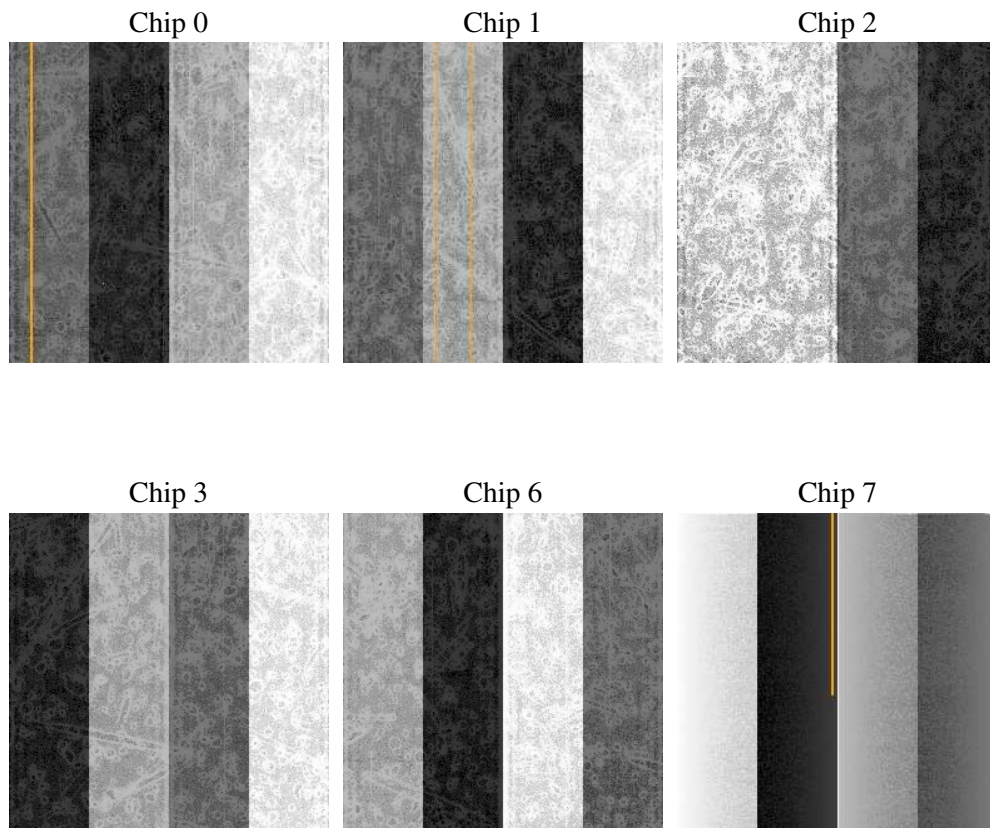
2 OBI

2.1 OBI

2.1.1 Images



2.1.2 Bias



2.1.3 Parameters

obi_num	0
ascdsver	7.6.8
caldbver	3.2.2
date	2006-07-28T04:43:20
revision	2

sched_exp_time	0.0
ontime	8465.4855656922
ontime0	4576.3279679418
ontime1	4722.1716474295
ontime2	4404.5564559996
ontime3	4501.7852544785
ontime6	4994.4148722589
ontime7	8465.4855656922
l1events	1546153

2.1.4 Events

	ccd 0	ccd 1	ccd 2	ccd 3	ccd 6	ccd 7
level 1 events	219390	226005	214058	221020	250553	415127
rejected events	29192	28851	29078	31328	32063	57202
rejected %	13%	12%	13%	14%	12%	13%

	ccd 0	ccd 1	ccd 2	ccd 3	ccd 6	ccd 7
grade 0 events	105194	108812	103928	106621	119275	65043
	47%	48%	48%	48%	47%	15%
grade 1 events	579	484	598	609	562	160
	0%	0%	0%	0%	0%	0%
grade 2 events	33277	34603	31238	32245	37572	107789
	15%	15%	14%	14%	14%	25%
grade 3 events	12072	12454	11859	12572	13516	26940
	5%	5%	5%	5%	5%	6%
grade 4 events	12147	12491	11920	12367	13535	25986
	5%	5%	5%	5%	5%	6%
grade 5 events	2047	2109	1952	2090	2412	7387
	0%	0%	0%	0%	0%	1%
grade 6 events	27508	28794	26035	25887	34592	132167
	12%	12%	12%	11%	13%	31%
grade 7 events	26566	26258	26528	28629	29089	49655
	12%	11%	12%	12%	11%	11%

2.2 Compared Parameters

Parameter	Planned	Actual	Parameter	Planned	Actual
Instrument	ACIS	ACIS	Obspar format version number	6	6
Detector	ACIS-012367	ACIS-012367	Obspar file type	PREDICTED	ACTUAL
Grating	NONE	NONE	Obspar update status	NONE	UPDATED
Data mode	FAINT	FAINT	On-chip summing requested	N	N
Observation mode	SECONDARY	SECONDARY	Subarray requested	NONE	NONE
Pointing RA	0	316.5231989935795	Alternating exposures requested	N	N
Pointing Dec	0	40.52250339449657	Primary exposure time	0.000000	3.2
Pointing Roll	0.0	19.01226017655374			
SIM focus pos (mm)	-0.782348	-0.6828225247311905			
SIM defocus (mm)	0	0.8505141146731063			
SIM translation stage pos (mm)	-233.592463	250.466033080201			
SIM translation stage offset (mm)	0	-0.01005468664627074			
Observation start time	162005412.869651	162005411.84494			
Observation start date	2003-02-19T01:30:13	2003-02-19T01:30:11			
Observation end time	162028042.820602	162028041.79589			
Observation end date	2003-02-19T07:47:23	2003-02-19T07:47:21			
Read mode	TIMED	TIMED			

2.3 Aspect

2.4 Star Slots

2.5 FID Slots

A Summary

A.1 Status

V&V Scientist	Jen Lauer
V&V Date (YYYY-MM-DD)	2006.07.28
V&V Edition	1
V&V Disposition and Status	OK
V&V Charge Time	8.46399996

A.2 Comments