

V&V Reference Report

L2 ASCDS Version : 7.6.9

Observation 60836 - L2 Version 001
Chandra X-Ray Center

L2 Processing Date : Sep 19 2006

Contents

1	Front	2
2	OBI	3
2.1	OBI	3
2.1.1	Images	3
2.1.2	Bias	3
2.1.3	Parameters	4
2.1.4	Events	4
2.2	Compared Parameters	5
2.3	Aspect	6
2.4	Star Slots	8
2.5	FID Slots	8
A	Summary	9
A.1	Status	9
A.2	Comments	9

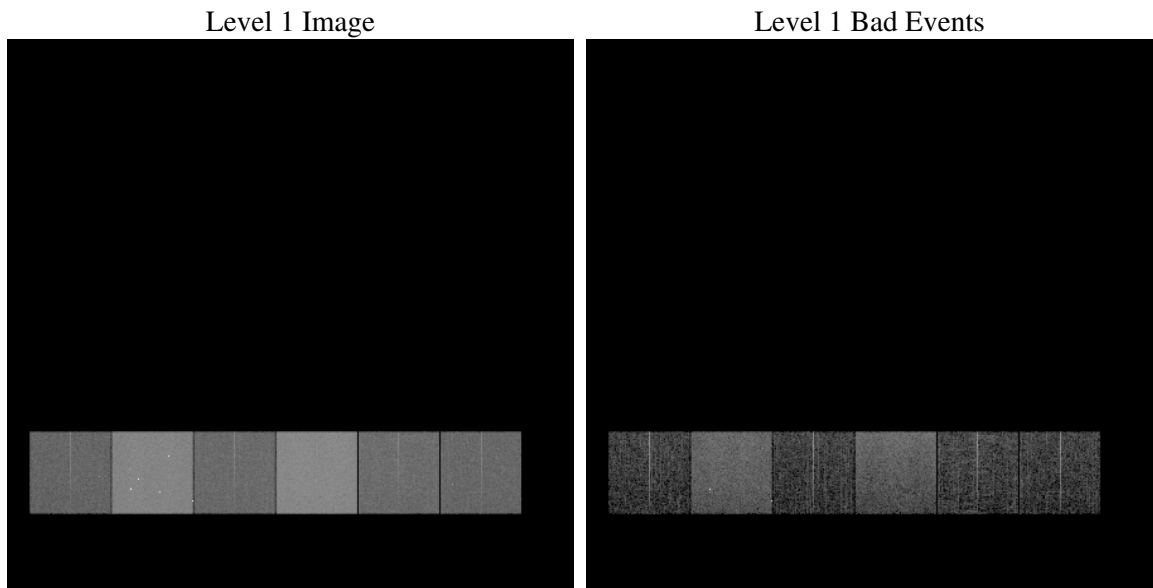
1 Front

seq_num	
obs_id	60836
title	ACIS-456789 diagnostics
observer	CHANDRA engineering request/realtime commanding
object	
dtcycle	0
cycle	P
ra_targ	0.0
dec_targ	0.0
ra_nom	99.017830942996
dec_nom	10.377377803225
roll_nom	274.92063104535
revision	2
ontime	7791.5578974485
livetime	7692.8964998381
ontime4	3108.458122313
ontime5	7791.5989374518
ontime6	3374.1805398166
ontime7	7791.5578974485
ontime8	3471.4934706986
ontime9	3231.4523367882
l2events	1150013

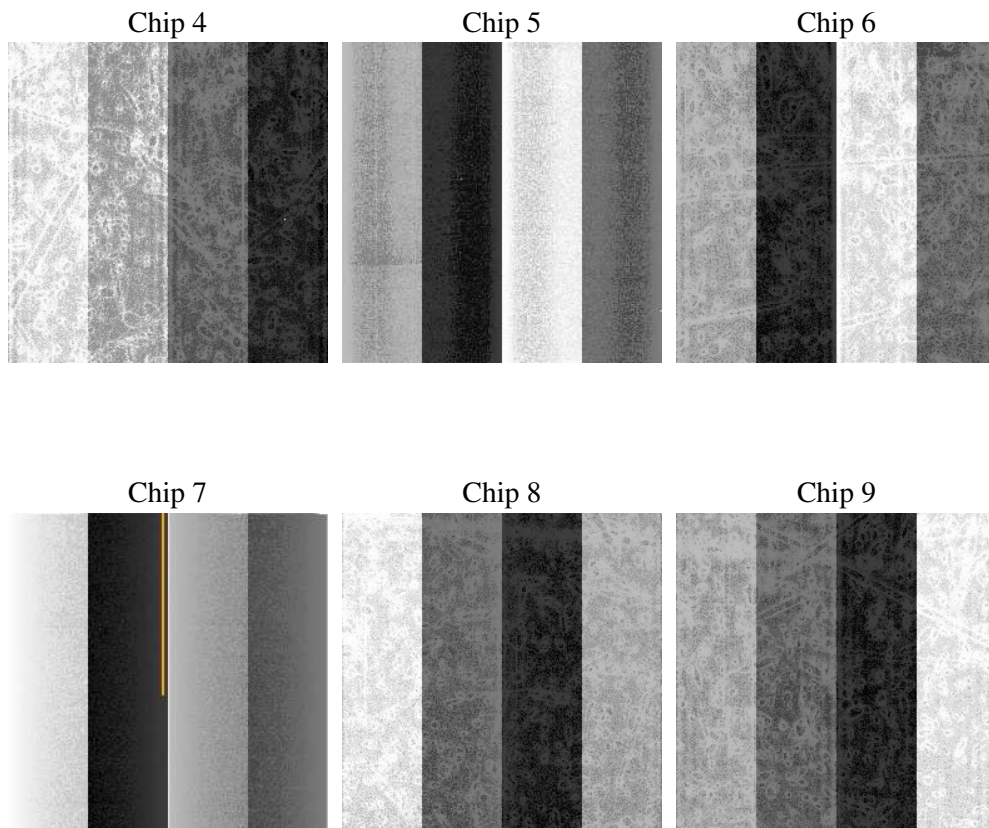
2 OBI

2.1 OBI

2.1.1 Images



2.1.2 Bias



2.1.3 Parameters

obi_num	0
ascdsver	7.6.9
caldsver	3.2.3
date	2006-09-19T13:50:37
revision	2

sched_exp_time	0.0
ontime	7794.6161175668
ontime4	3111.3932224214
ontime5	7794.6161175668
ontime6	3377.1566799283
ontime7	7794.6161175668
ontime8	3474.3875308335
ontime9	3234.5515969098
l1events	1425106

2.1.4 Events

	ccd 4	ccd 5	ccd 6	ccd 7	ccd 8	ccd 9
level 1 events	151840	363448	174453	390107	183248	162010
rejected events	24012	62266	24169	53084	27345	23863
rejected %	15%	17%	13%	13%	14%	14%

	ccd 4	ccd 5	ccd 6	ccd 7	ccd 8	ccd 9
grade 0 events	74128	39171	81626	62398	85687	76592
	48%	10%	46%	15%	46%	47%
grade 1 events	530	252	422	126	436	419
	0%	0%	0%	0%	0%	0%
grade 2 events	20229	142444	25881	100524	26932	23604
	13%	39%	14%	25%	14%	14%
grade 3 events	8508	9653	9262	25210	10098	8692
	5%	2%	5%	6%	5%	5%
grade 4 events	8481	9314	9191	24920	9799	8741
	5%	2%	5%	6%	5%	5%
grade 5 events	1527	7235	1668	7017	1888	1667
	1%	1%	0%	1%	1%	1%
grade 6 events	16595	100720	24471	124121	23534	20636
	10%	27%	14%	31%	12%	12%
grade 7 events	21842	54659	21932	45791	24874	21659
	14%	15%	12%	11%	13%	13%

2.2 Compared Parameters

Parameter	Planned	Actual	Parameter	Planned	Actual
Instrument	ACIS	ACIS	Obspar format version number	6	6
Detector	ACIS-456789	ACIS-456789	Obspar file type	PREDICTED	ACTUAL
Grating	NONE	NONE	Obspar update status	NONE	UPDATED
Data mode	FAINT	FAINT	On-chip summing requested	N	N
Observation mode	SECONDARY	SECONDARY	Subarray requested	NONE	NONE
Pointing RA	0	99.01783094299581	Alternating exposures requested	N	N
Pointing Dec	0	10.37737780322471	Primary exposure time	3.2	3.2
Pointing Roll	0.0	274.9206310453515			
SIM focus pos (mm)	-0.684267	-0.6828225247311905			
SIM defocus (mm)	0	0.8505141146731063			
SIM translation stage pos (mm)	-190.132523	250.466033080201			
SIM translation stage offset (mm)	0	-0.01005468664627074			
Observation start time	162434186.787667	162434185.76297			
Observation start date	2003-02-24T00:36:27	2003-02-24T00:36:25			
Observation end time	162445541.738144	162445540.71345			
Observation end date	2003-02-24T03:45:42	2003-02-24T03:45:40			
Read mode	TIMED	TIMED			

2.3 Aspect

2.4 Star Slots

2.5 FID Slots

A Summary

A.1 Status

V&V Scientist	Beth Sundheim
V&V Date (YYYY-MM-DD)	2006.09.20
V&V Edition	1
V&V Disposition and Status	OK
V&V Charge Time	7.79155789

A.2 Comments