

V&V Reference Report

L2 ASCDS Version : 7.6.9

Observation 60827 - L2 Version 001
Chandra X-Ray Center

L2 Processing Date : Sep 19 2006

Contents

1	Front	2
2	OBI	3
2.1	OBI	3
2.1.1	Images	3
2.1.2	Bias	3
2.1.3	Parameters	4
2.1.4	Events	4
2.2	Compared Parameters	5
2.3	Aspect	6
2.4	Star Slots	8
2.5	FID Slots	8
A	Summary	9
A.1	Status	9
A.2	Comments	9

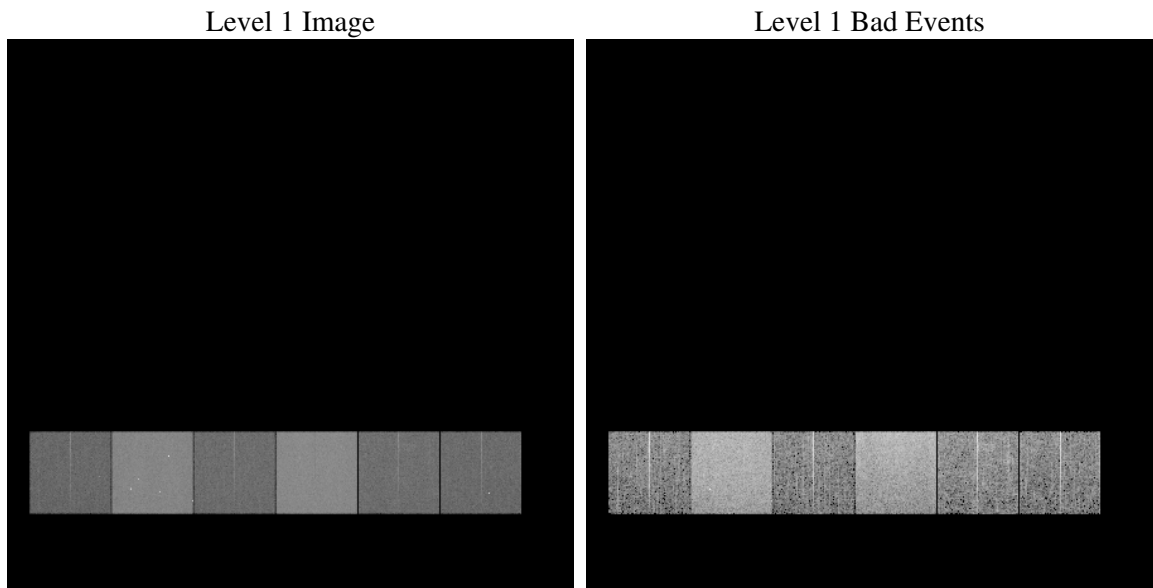
1 Front

seq_num	
obs_id	60827
title	ACIS-456789 diagnostics
observer	CHANDRA engineering request/realtime commanding
object	
dtcycle	0
cycle	P
ra_targ	0.0
dec_targ	0.0
ra_nom	144.03500666555
dec_nom	-35.996056967606
roll_nom	335.04218712733
revision	2
ontime	8361.5999688506
livetime	8255.720355294
ontime4	3509.7206587195
ontime5	8358.3589885831
ontime6	3788.4068870842
ontime7	8361.5999688506
ontime8	3859.7907316089
ontime9	3684.5715030432
l2events	1231407

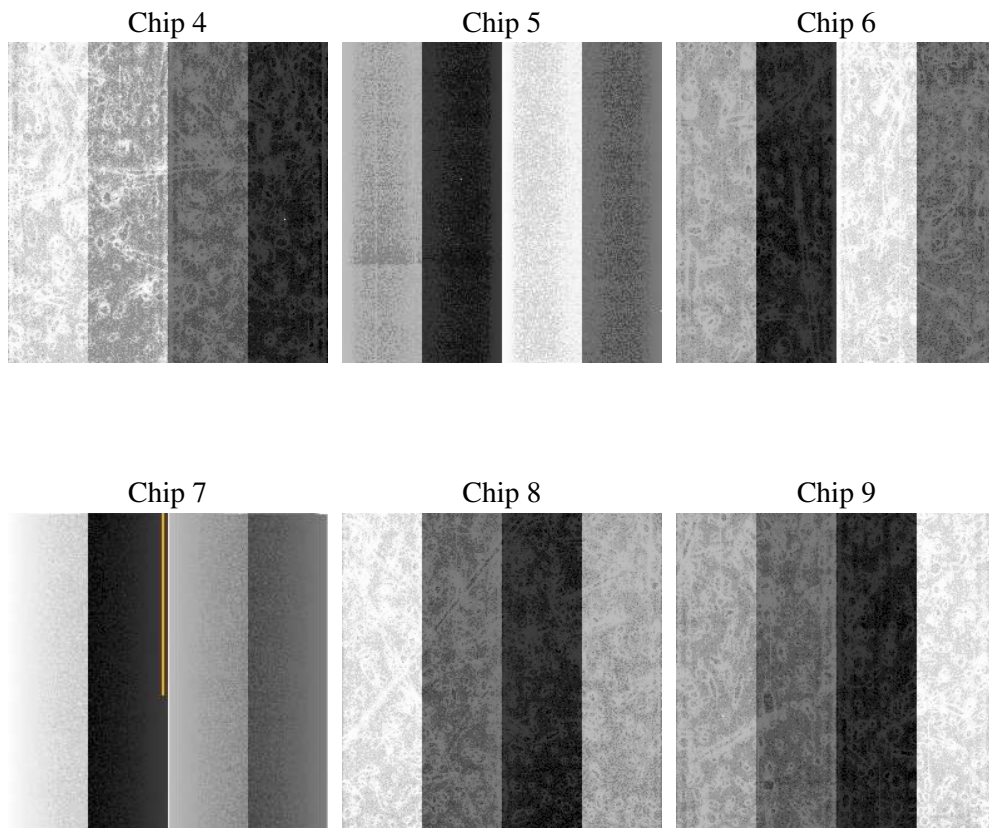
2 OBI

2.1 OBI

2.1.1 Images



2.1.2 Bias



2.1.3 Parameters

obi_num	0
ascdsver	7.6.9
caldsver	3.2.3
date	2006-09-19T13:53:00
revision	2

sched_exp_time	0.0
ontime	8462.2638755739
ontime4	3548.9319383502
ontime5	8459.0228953063
ontime6	3827.6592067182
ontime7	8462.2638755739
ontime8	3908.6840413809
ontime9	3727.1879527569
l1events	1541868

2.1.4 Events

	ccd 4	ccd 5	ccd 6	ccd 7	ccd 8	ccd 9
level 1 events	168237	382232	191884	415189	201670	182656
rejected events	27802	68529	27929	62254	33470	28542
rejected %	16%	17%	14%	14%	16%	15%

	ccd 4	ccd 5	ccd 6	ccd 7	ccd 8	ccd 9
grade 0 events	82399	39008	90493	64856	93498	86894
	48%	10%	47%	15%	46%	47%
grade 1 events	633	143	452	130	481	502
	0%	0%	0%	0%	0%	0%
grade 2 events	22624	151060	28623	107018	29809	26397
	13%	39%	14%	25%	14%	14%
grade 3 events	9384	10244	10155	26955	11103	9754
	5%	2%	5%	6%	5%	5%
grade 4 events	9382	10167	10168	26054	11026	9942
	5%	2%	5%	6%	5%	5%
grade 5 events	1759	6969	1931	7566	2199	2061
	1%	1%	1%	1%	1%	1%
grade 6 events	18132	106968	26131	132276	24892	22901
	10%	27%	13%	31%	12%	12%
grade 7 events	23924	57673	23931	50334	28662	24205
	14%	15%	12%	12%	14%	13%

2.2 Compared Parameters

Parameter	Planned	Actual	Parameter	Planned	Actual
Instrument	ACIS	ACIS	Obspar format version number	6	6
Detector	ACIS-456789	ACIS-456789	Obspar file type	PREDICTED	ACTUAL
Grating	NONE	NONE	Obspar update status	NONE	UPDATED
Data mode	FAINT	FAINT	On-chip summing requested	N	N
Observation mode	SECONDARY	SECONDARY	Subarray requested	NONE	NONE
Pointing RA	0	144.0350066655467	Alternating exposures requested	N	N
Pointing Dec	0	-35.99605696760645	Primary exposure time	3.2	3.2
Pointing Roll	0.0	335.0421871273304			
SIM focus pos (mm)	-0.684267	-0.6828225247311905			
SIM defocus (mm)	0	0.8505141146731063			
SIM translation stage pos (mm)	-190.132523	250.466033080201			
SIM translation stage offset (mm)	0	-0.01005468664627074			
Observation start time	162924575.508331	162924574.48358			
Observation start date	2003-03-01T16:49:36	2003-03-01T16:49:34			
Observation end time	162945885.259229	162945884.23448			
Observation end date	2003-03-01T22:44:45	2003-03-01T22:44:44			
Read mode	TIMED	TIMED			

2.3 Aspect

2.4 Star Slots

2.5 FID Slots

A Summary

A.1 Status

V&V Scientist	Beth Sundheim
V&V Date (YYYY-MM-DD)	2006.09.20
V&V Edition	1
V&V Disposition and Status	OK
V&V Charge Time	8.36159996

A.2 Comments