

# V&V Reference Report

## L2 ASCDS Version : 8.4.5

Observation 60817 - L2 Version 3  
Chandra X-Ray Center

L2 Processing Date : Oct 24 2012

## Contents

<b>1</b>	<b>Front</b>	<b>2</b>
<b>2</b>	<b>OBI</b>	<b>3</b>
2.1	OBI . . . . .	3
2.1.1	Images . . . . .	3
2.1.2	Bias . . . . .	3
2.1.3	Parameters . . . . .	4
2.1.4	Events . . . . .	4
2.2	Compared Parameters . . . . .	5
2.3	Star Slots . . . . .	6
2.4	FID Slots . . . . .	6
<b>A</b>	<b>Summary</b>	<b>7</b>
A.1	Status . . . . .	7
A.2	Comments . . . . .	7

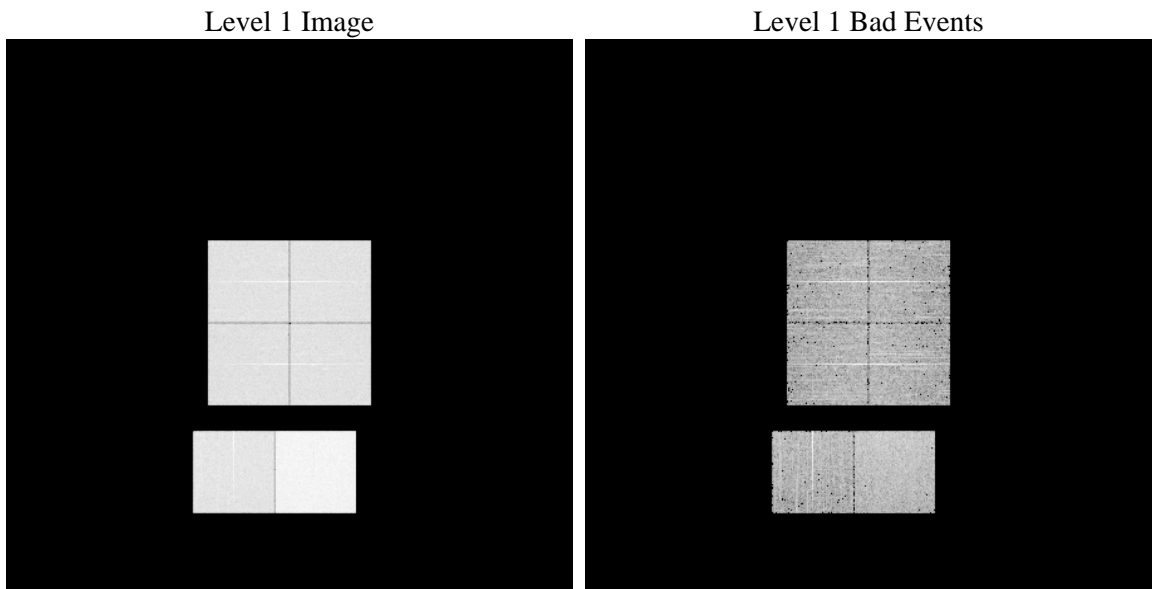
# 1 Front

seq_num	&#160	Sequence number
obs_id	60817	Observation id
title	ACIS-012367 diagnostics	Proposal title
observer	CHANDRA engineering request/realtime commanding	Principal investig
object	&#160	Source name
dtcycle	0	&#160
cycle	P	events from which exps? Prim/Second/Both
ra_targ	0.0	Observer's specified target RA [deg]
dec_targ	0.0	Observer's specified target Dec [deg]
ra_nom	229.97810821372	Nominal RA [deg]
dec_nom	27.020920532257	Nominal Dec [deg]
roll_nom	100.17941617898	Nominal Roll [deg]
revision	3	Processing version of data
ontime	8457.599968493	Sum of GTIs [s]
livetime	8350.5047451366	Livetime [s]
ontime0	4685.1073422134	Sum of GTIs [s]
ontime1	4704.550753653	Sum of GTIs [s]
ontime2	4436.6368828714	Sum of GTIs [s]
ontime3	4493.8876863122	Sum of GTIs [s]
ontime6	4961.7176463604	Sum of GTIs [s]
ontime7	8457.599968493	Sum of GTIs [s]
l2events	1280461	Number of level 2 events

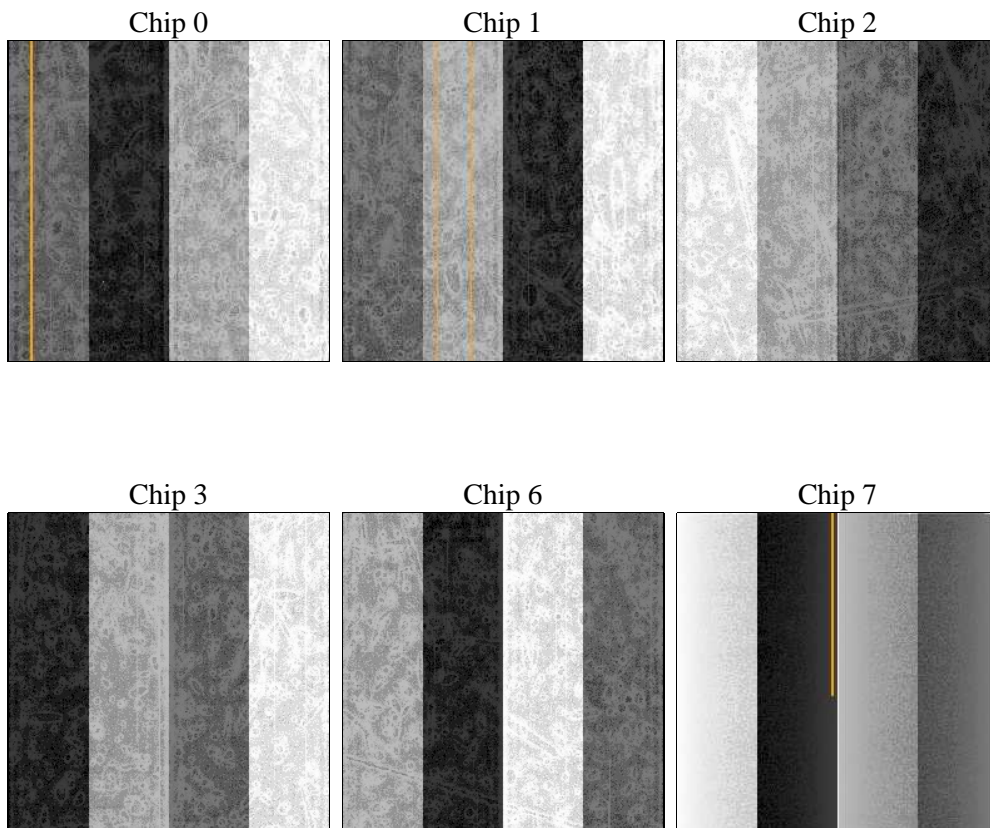
## 2 OBI

### 2.1 OBI

#### 2.1.1 Images



#### 2.1.2 Bias



### 2.1.3 Parameters

obi_num	0	Obi number	sched_exp_time	0.0	[s] Scheduled observation exposure time
ascdsver	8.4.5	Processing system revision	ontime	8457.599968493	Sum of GTIs [s]
caldbver	4.5.2	&#160	ontime0	4685.1073422134	Sum of GTIs [s]
date	2012-10-24T13:26:54	Date and time of file creation	ontime1	4704.550753653	Sum of GTIs [s]
revision	3	Processing version of data	ontime2	4436.6368828714	Sum of GTIs [s]
			ontime3	4493.8876863122	Sum of GTIs [s]
			ontime6	4961.7176463604	Sum of GTIs [s]
			ontime7	8457.599968493	Sum of GTIs [s]
			l1events	1545088	Number of level 1 events

### 2.1.4 Events

	ccd 0	ccd 1	ccd 2	ccd 3	ccd 6	ccd 7		ccd 0	ccd 1	ccd 2	ccd 3	ccd 6	ccd 7
level 1 events	224792	224036	215233	219955	247769	413303	grade 0 events	106783	105961	103093	105055	116578	91796
rejected events	32083	30902	31296	32634	34008	45390		47%	47%	47%	47%	47%	22%
rejected %	14%	13%	14%	14%	13%	10%	grade 1 events	604	503	626	601	561	277
								0%	0%	0%	0%	0%	0%
							grade 2 events	33517	34456	31293	31840	36675	81518
								14%	15%	14%	14%	14%	19%
							grade 3 events	12450	12296	12094	12319	13243	37498
								5%	5%	5%	5%	5%	9%
							grade 4 events	12408	12282	11934	12069	13354	37060
								5%	5%	5%	5%	5%	8%
							grade 5 events	2188	2132	2047	2180	2470	8729
								0%	0%	0%	0%	0%	2%
							grade 6 events	27551	28139	25650	26038	34030	120339
								12%	12%	11%	11%	13%	29%
							grade 7 events	29291	28267	28496	29853	30858	36086
								13%	12%	13%	13%	12%	8%

## 2.2 Compared Parameters

Parameter	Planned	Actual	Parameter	Planned	Actual
Instrument	ACIS	ACIS	Obspar format version number	7	7
Detector	ACIS-012367	ACIS-012367	Obspar file type	PREDICTED	ACTUAL
Grating	NONE	NONE	Obspar update status	NONE	UPDATED
Data mode	FAINT	FAINT	On-chip summing requested	N	N
Observation mode	SECONDARY	SECONDARY	Subarray requested	NONE	NONE
[deg] Pointing RA	0	229.9781082137181	Alternating exposures requested	N	N
[deg] Pointing Dec	0	27.02092053225684	[s] Primary exposure time	0.000000	3.2
[deg] Pointing Roll	0.0	100.1794161789824			
[mm] SIM focus pos	-0.782348	-0.7809083437167272			
[mm] SIM defocus	0	0.7524282956875696			
[mm] SIM translation stage pos	-233.592463	250.466033080201			
[mm] SIM translation stage offset	0	-0.01005468664627074			
[s] Observation start time (MET)	163619794.087525	163619793.06282			
Observation start date	2003-03-09T17:56:34	2003-03-09T17:56:33			
[s] Observation end time (MET)	163631589.788021	163631588.76332			
Observation end date	2003-03-09T21:13:10	2003-03-09T21:13:08			
Read mode	TIMED	TIMED			

## 2.3 Star Slots

## 2.4 FID Slots

## A Summary

### A.1 Status

V&V Scientist	Beth Sundheim
V&V Date (YYYY-MM-DD)	2012.12.03
V&V Edition	1
V&V Disposition and Status	OK
V&V Charge Time	8.457599968493

### A.2 Comments