

# V&V Reference Report

## L2 ASCDS Version : 7.6.8.1

Observation 60778 - L2 Version 001  
Chandra X-Ray Center

L2 Processing Date : Aug 5 2006

## Contents

<b>1</b>	<b>Front</b>	<b>2</b>
<b>2</b>	<b>OBI</b>	<b>3</b>
2.1	OBI . . . . .	3
2.1.1	Images . . . . .	3
2.1.2	Bias . . . . .	3
2.1.3	Parameters . . . . .	4
2.1.4	Events . . . . .	4
2.2	Compared Parameters . . . . .	5
2.3	Aspect . . . . .	6
2.4	Star Slots . . . . .	8
2.5	FID Slots . . . . .	8
<b>A</b>	<b>Summary</b>	<b>9</b>
A.1	Status . . . . .	9
A.2	Comments . . . . .	9

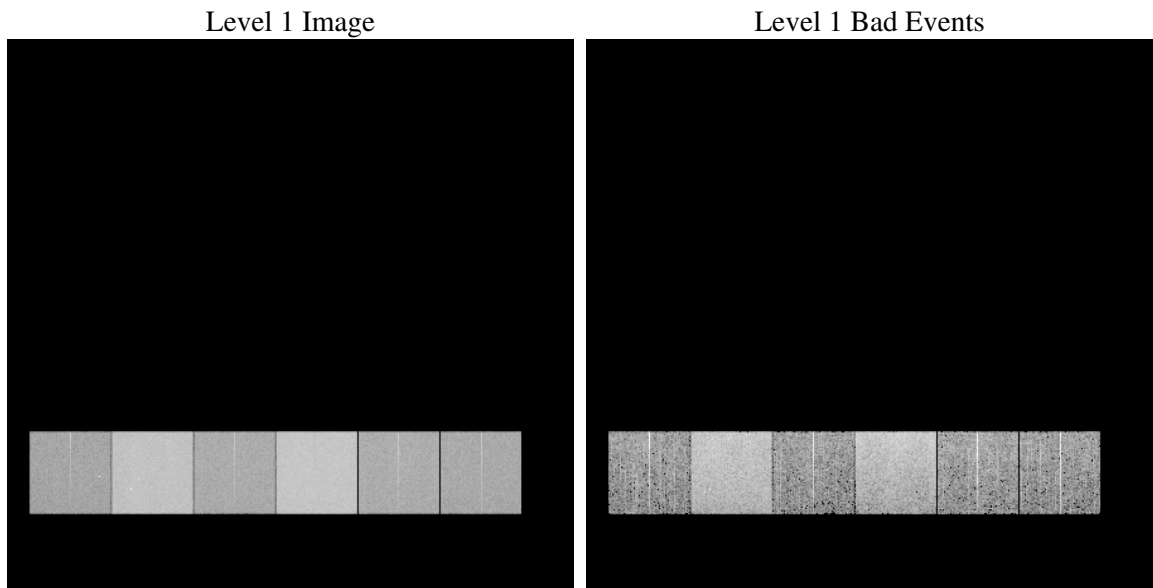
# 1 Front

seq_num	&#160
obs_id	60778
title	ACIS-456789 diagnostics
observer	CHANDRA engineering request/realtime commanding
object	&#160
dtcycle	0
cycle	P
ra_targ	0.0
dec_targ	0.0
ra_nom	145.00568634845
dec_nom	19.971918592282
roll_nom	247.90456091715
revision	2
ontime	8428.7999686003
livetime	8322.0694281838
ontime4	3699.3611232042
ontime5	8428.7999686003
ontime6	4098.8536123931
ontime7	8428.7999686003
ontime8	4186.3612837195
ontime9	3995.1419567168
l2events	1244002

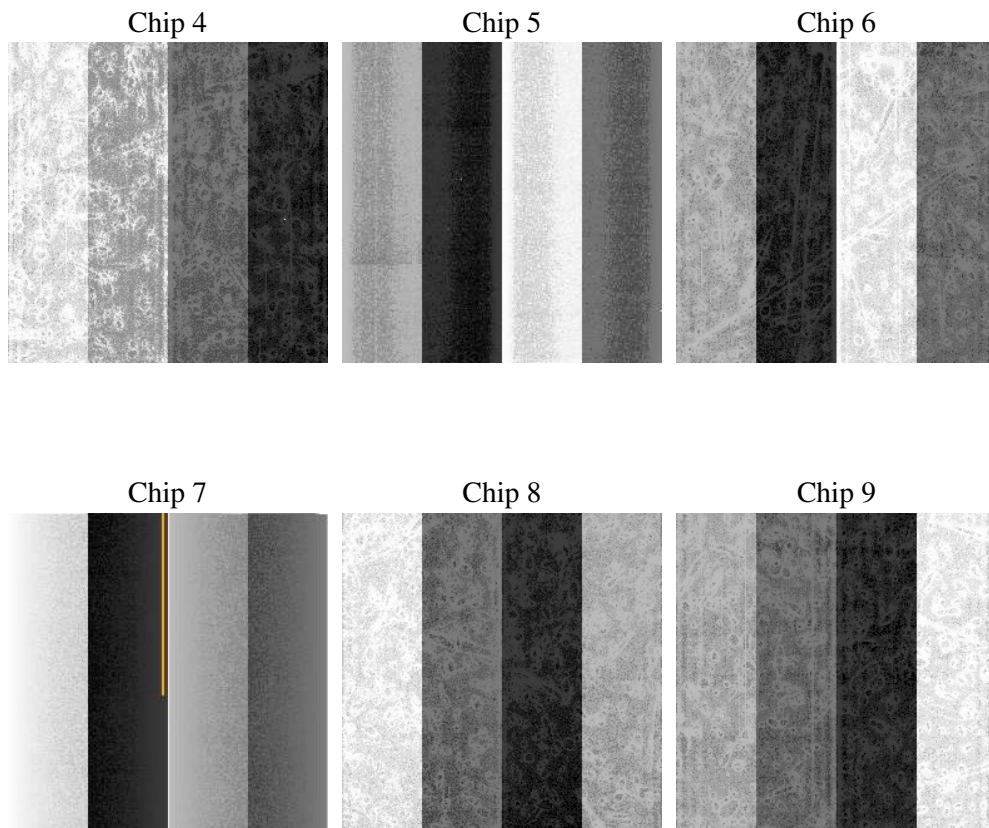
## 2 OBI

### 2.1 OBI

#### 2.1.1 Images



#### 2.1.2 Bias



### 2.1.3 Parameters

obi_num	0
ascdsver	7.6.8.1
caldsver	3.2.2
date	2006-08-05T04:03:37
revision	2

sched_exp_time	0.0
ontime	8465.5001074374
ontime4	3717.463407129
ontime5	8465.5001074374
ontime6	4119.3488998711
ontime7	8465.5001074374
ontime8	4210.0974917114
ontime9	4015.6372143328
l1events	1541465

### 2.1.4 Events

	ccd 4	ccd 5	ccd 6	ccd 7	ccd 8	ccd 9
level 1 events	172715	367306	200405	401584	209185	190270
rejected events	28377	64742	27467	58661	31175	28166
rejected %	16%	17%	13%	14%	14%	14%

	ccd 4	ccd 5	ccd 6	ccd 7	ccd 8	ccd 9
grade 0 events	84314	33563	94988	61217	98554	89916
	48%	9%	47%	15%	47%	47%
grade 1 events	606	121	460	151	445	511
	0%	0%	0%	0%	0%	0%
grade 2 events	23077	146712	30121	104402	31211	28143
	13%	39%	15%	25%	14%	14%
grade 3 events	9761	10010	10717	25238	11740	10325
	5%	2%	5%	6%	5%	5%
grade 4 events	9656	9477	10787	24794	11399	10439
	5%	2%	5%	6%	5%	5%
grade 5 events	1745	6797	2009	7220	2209	2065
	1%	1%	1%	1%	1%	1%
grade 6 events	18331	104213	27304	128844	26202	24205
	10%	28%	13%	32%	12%	12%
grade 7 events	25225	56413	24019	49718	27425	24666
	14%	15%	11%	12%	13%	12%

## 2.2 Compared Parameters

Parameter	Planned	Actual	Parameter	Planned	Actual
Instrument	ACIS	ACIS	Obspar format version number	6	6
Detector	ACIS-456789	ACIS-456789	Obspar file type	PREDICTED	ACTUAL
Grating	NONE	NONE	Obspar update status	NONE	UPDATED
Data mode	FAINT	FAINT	On-chip summing requested	N	N
Observation mode	SECONDARY	SECONDARY	Subarray requested	NONE	NONE
Pointing RA	0	145.0056863484527	Alternating exposures requested	N	N
Pointing Dec	0	19.97191859228192	Primary exposure time	0.000000	3.2
Pointing Roll	0.0	247.9045609171486			
SIM focus pos (mm)	-0.684267	-0.6828225247311905			
SIM defocus (mm)	0	0.8505141146731063			
SIM translation stage pos (mm)	-190.132523	250.466033080201			
SIM translation stage offset (mm)	0	-0.01005468664627074			
Observation start time	166576109.462208	166576108.43747			
Observation start date	2003-04-12T23:08:29	2003-04-12T23:08:28			
Observation end time	166597419.213109	166597418.18837			
Observation end date	2003-04-13T05:03:39	2003-04-13T05:03:38			
Read mode	TIMED	TIMED			

## 2.3 Aspect



## **2.4 Star Slots**

## **2.5 FID Slots**



## A Summary

### A.1 Status

V&V Scientist	Beth Sundheim
V&V Date (YYYY-MM-DD)	2006.08.06
V&V Edition	1
V&V Disposition and Status	OK
V&V Charge Time	8.42879996

### A.2 Comments