

V&V Reference Report

L2 ASCDS Version : 8.4.5

Observation 60772 - L2 Version 3
Chandra X-Ray Center

L2 Processing Date : Oct 26 2012

Contents

| | | |
|----------|-------------------------------|----------|
| 1 | Front | 2 |
| 2 | OBI | 3 |
| 2.1 | OBI | 3 |
| 2.1.1 | Images | 3 |
| 2.1.2 | Bias | 3 |
| 2.1.3 | Parameters | 4 |
| 2.1.4 | Events | 4 |
| 2.2 | Compared Parameters | 5 |
| 2.3 | Star Slots | 6 |
| 2.4 | FID Slots | 6 |
| A | Summary | 7 |
| A.1 | Status | 7 |
| A.2 | Comments | 7 |

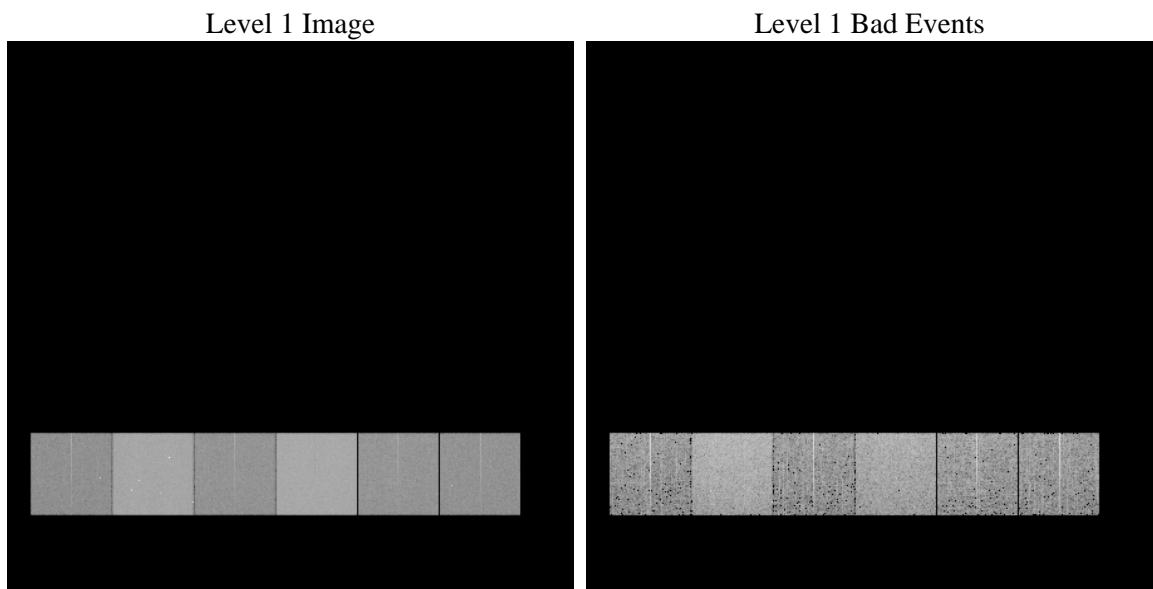
1 Front

| | | |
|----------|---|---|
| seq_num | | Sequence number |
| obs_id | 60772 | Observation id |
| title | ACIS-456789 diagnostics | Proposal title |
| observer | CHANDRA engineering request/realtime commanding | Principal investig |
| object | | Source name |
| dtcycle | 0 | |
| cycle | P | events from which exps? Prim/Second/Both |
| ra_targ | 0.0 | Observer's specified target RA [deg] |
| dec_targ | 0.0 | Observer's specified target Dec [deg] |
| ra_nom | 77.044822838597 | Nominal RA [deg] |
| dec_nom | 54.987475450565 | Nominal Dec [deg] |
| roll_nom | 301.03116994725 | Nominal Roll [deg] |
| revision | 3 | Processing version of data |
| ontime | 7788.7999709845 | Sum of GTIs [s] |
| livetime | 7690.1734958996 | Livetime [s] |
| ontime4 | 3281.7436303496 | Sum of GTIs [s] |
| ontime5 | 7788.7999709845 | Sum of GTIs [s] |
| ontime6 | 3592.8401772976 | Sum of GTIs [s] |
| ontime7 | 7788.7999709845 | Sum of GTIs [s] |
| ontime8 | 3683.6696938872 | Sum of GTIs [s] |
| ontime9 | 3498.7270871997 | Sum of GTIs [s] |
| l2events | 1163011 | Number of level 2 events |

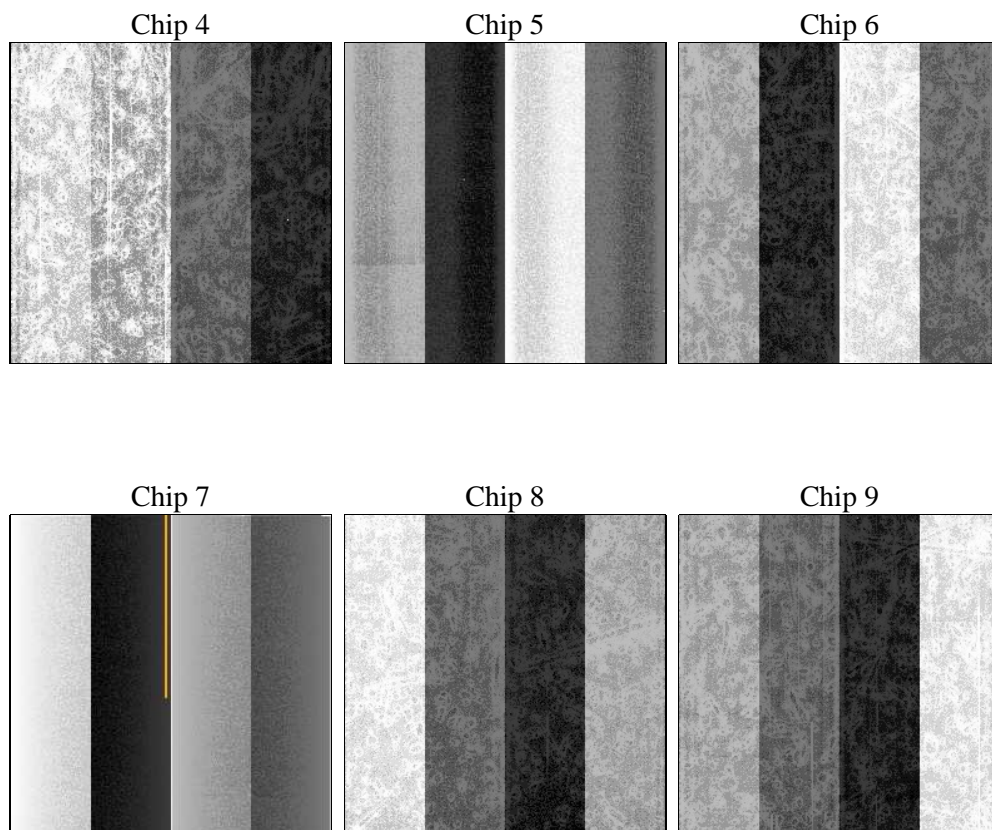
2 OBI

2.1 OBI

2.1.1 Images



2.1.2 Bias



2.1.3 Parameters

| | | | | | |
|----------|---------------------|--------------------------------|----------------|-----------------|---|
| obi_num | 1 | Obi number | sched_exp_time | 0.0 | [s] Scheduled observation exposure time |
| ascdsver | 8.4.5 | Processing system revision | ontime | 7788.7999709845 | Sum of GTIs [s] |
| caldsver | 4.5.2 | | ontime4 | 3281.7436303496 | Sum of GTIs [s] |
| date | 2012-10-26T22:37:24 | Date and time of file creation | ontime5 | 7788.7999709845 | Sum of GTIs [s] |
| revision | 3 | Processing version of data | ontime6 | 3592.8401772976 | Sum of GTIs [s] |
| | | | ontime7 | 7788.7999709845 | Sum of GTIs [s] |
| | | | ontime8 | 3683.6696938872 | Sum of GTIs [s] |
| | | | ontime9 | 3498.7270871997 | Sum of GTIs [s] |
| | | | l1events | 1421274 | Number of level 1 events |

2.1.4 Events

| | ccd 4 | ccd 5 | ccd 6 | ccd 7 | ccd 8 | ccd 9 | | ccd 4 | ccd 5 | ccd 6 | ccd 7 | ccd 8 | ccd 9 |
|-----------------|--------|--------|--------|--------|--------|--------|----------------|-------|--------|-------|--------|-------|-------|
| level 1 events | 156915 | 349111 | 179467 | 376927 | 188159 | 170695 | grade 0 events | 75908 | 71996 | 83400 | 84462 | 86943 | 79453 |
| rejected events | 25868 | 50882 | 26496 | 41241 | 28934 | 26409 | | 48% | 20% | 46% | 22% | 46% | 46% |
| rejected % | 16% | 14% | 14% | 10% | 15% | 15% | grade 1 events | 546 | 427 | 420 | 269 | 412 | 466 |
| | | | | | | | | 0% | 0% | 0% | 0% | 0% | 0% |
| | | | | | | | grade 2 events | 20985 | 105800 | 26383 | 74632 | 27727 | 24732 |
| | | | | | | | | 13% | 30% | 14% | 19% | 14% | 14% |
| | | | | | | | grade 3 events | 8572 | 18652 | 9528 | 33433 | 10189 | 9285 |
| | | | | | | | | 5% | 5% | 5% | 8% | 5% | 5% |
| | | | | | | | grade 4 events | 8652 | 18597 | 9270 | 33469 | 10429 | 9167 |
| | | | | | | | | 5% | 5% | 5% | 8% | 5% | 5% |
| | | | | | | | grade 5 events | 1526 | 8862 | 1795 | 7886 | 2053 | 1863 |
| | | | | | | | | 0% | 2% | 1% | 2% | 1% | 1% |
| | | | | | | | grade 6 events | 16930 | 83184 | 24390 | 109690 | 23937 | 21649 |
| | | | | | | | | 10% | 23% | 13% | 29% | 12% | 12% |
| | | | | | | | grade 7 events | 23796 | 41593 | 24281 | 33086 | 26469 | 24080 |
| | | | | | | | | 15% | 11% | 13% | 8% | 14% | 14% |

2.2 Compared Parameters

| Parameter | Planned | Actual | Parameter | Planned | Actual |
|-----------------------------------|---------------------|----------------------|---------------------------------|-----------|---------|
| Instrument | ACIS | ACIS | Obspar format version number | 7 | 7 |
| Detector | ACIS-456789 | ACIS-456789 | Obspar file type | PREDICTED | ACTUAL |
| Grating | NONE | NONE | Obspar update status | NONE | UPDATED |
| Data mode | FAINT | FAINT | On-chip summing requested | N | N |
| Observation mode | SECONDARY | SECONDARY | Subarray requested | NONE | NONE |
| [deg] Pointing RA | 0 | 77.04482283859666 | Alternating exposures requested | N | N |
| [deg] Pointing Dec | 0 | 54.98747545056474 | [s] Primary exposure time | 0.000000 | 3.2 |
| [deg] Pointing Roll | 0.0 | 301.0311699472485 | | | |
| [mm] SIM focus pos | -0.684267 | -0.6828225247311905 | | | |
| [mm] SIM defocus | 0 | 0.8505141146731063 | | | |
| [mm] SIM translation stage pos | -190.132523 | 250.466033080201 | | | |
| [mm] SIM translation stage offset | 0 | -0.01005468664627074 | | | |
| [s] Observation start time (MET) | 167454622.649332 | 167454621.62461 | | | |
| Observation start date | 2003-04-23T03:10:23 | 2003-04-23T03:10:21 | | | |
| [s] Observation end time (MET) | 167465879.199808 | 167465878.17509 | | | |
| Observation end date | 2003-04-23T06:17:59 | 2003-04-23T06:17:58 | | | |
| Read mode | TIMED | TIMED | | | |

2.3 Star Slots

2.4 FID Slots

A Summary

A.1 Status

| | |
|----------------------------|-----------------|
| V&V Scientist | Beth Sundheim |
| V&V Date (YYYY-MM-DD) | 2012.12.06 |
| V&V Edition | 1 |
| V&V Disposition and Status | OK |
| V&V Charge Time | 7.7887999709845 |

A.2 Comments