

V&V Reference Report

L2 ASCDS Version : 7.6.8.1

Observation 60772 - L2 Version 001
Chandra X-Ray Center

L2 Processing Date : Aug 5 2006

Contents

1	Front	2
2	OBI	3
2.1	OBI	3
2.1.1	Images	3
2.1.2	Bias	3
2.1.3	Parameters	4
2.1.4	Events	4
2.2	Compared Parameters	5
2.3	Aspect	6
2.4	Star Slots	8
2.5	FID Slots	8
A	Summary	9
A.1	Status	9
A.2	Comments	9

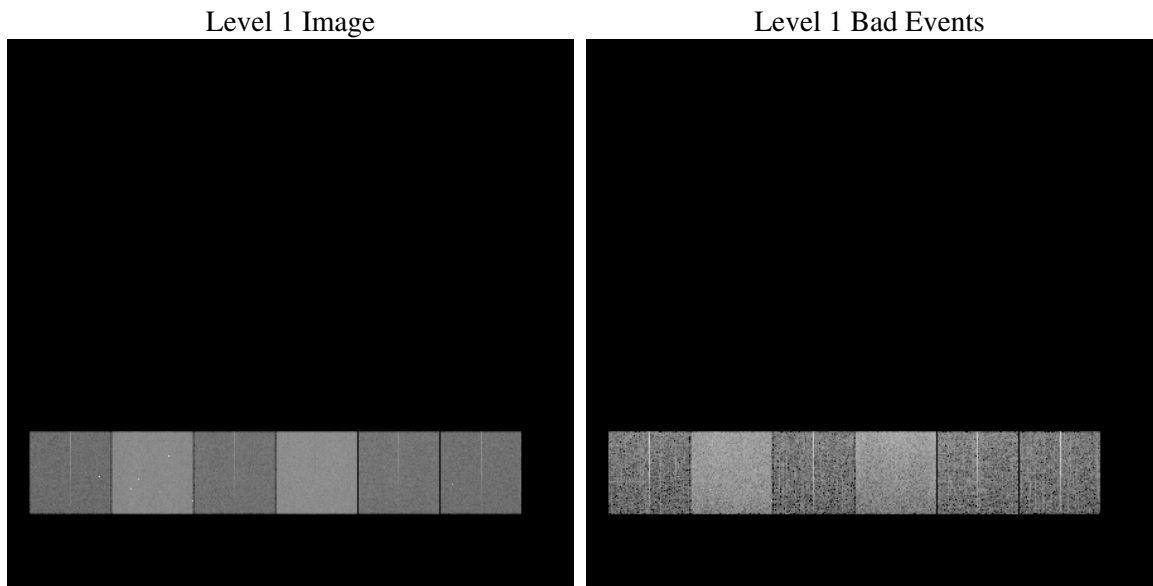
1 Front

seq_num	
obs_id	60772
title	ACIS-456789 diagnostics
observer	CHANDRA engineering request/realtime commanding
object	
dtcycle	0
cycle	P
ra_targ	0.0
dec_targ	0.0
ra_nom	77.044822780646
dec_nom	54.98747546376
roll_nom	301.03116999048
revision	2
ontime	7788.2148318291
livetime	7689.5957661285
ontime4	3280.1436303556
ontime5	7788.2558718324
ontime6	3591.2401773036
ontime7	7788.2148318291
ontime8	3682.0696938932
ontime9	3497.1270872056
l2events	1143159

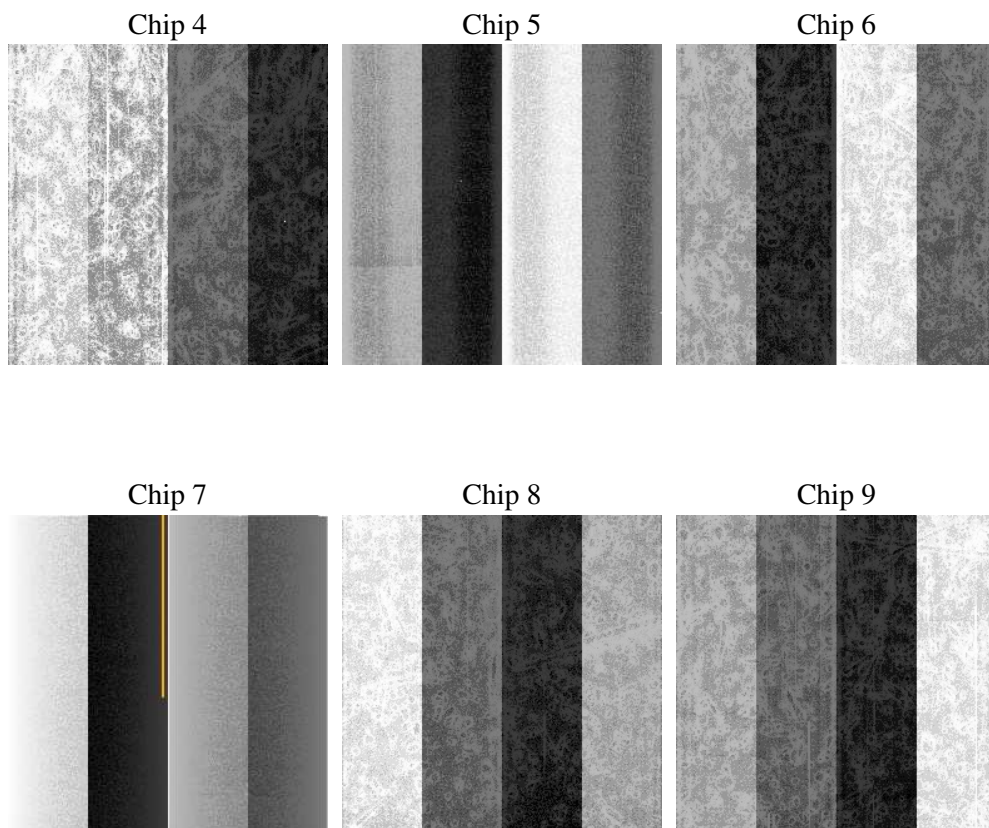
2 OBI

2.1 OBI

2.1.1 Images



2.1.2 Bias



2.1.3 Parameters

obi_num	1
ascdsver	7.6.8.1
caldbver	3.2.2
date	2006-08-05T05:58:27
revision	2

sched_exp_time	0.0
ontime	7791.3601795733
ontime4	3283.1658580899
ontime5	7791.3601795733
ontime6	3594.3034450412
ontime7	7791.3601795733
ontime8	3685.050881654
ontime9	3500.3134749532
llevents	1421274

2.1.4 Events

	ccd 4	ccd 5	ccd 6	ccd 7	ccd 8	ccd 9
level 1 events	156915	349111	179467	376927	188159	170695
rejected events	25998	59207	26626	52633	29051	26550
rejected %	16%	16%	14%	13%	15%	15%

	ccd 4	ccd 5	ccd 6	ccd 7	ccd 8	ccd 9
grade 0 events	75908	37511	83400	60067	86943	79453
	48%	10%	46%	15%	46%	46%
grade 1 events	546	288	420	163	412	466
	0%	0%	0%	0%	0%	0%
grade 2 events	20985	136537	26383	97089	27727	24733
	13%	39%	14%	25%	14%	14%
grade 3 events	8572	9800	9528	23938	10189	9285
	5%	2%	5%	6%	5%	5%
grade 4 events	8652	9707	9270	23822	10429	9167
	5%	2%	5%	6%	5%	5%
grade 5 events	1526	6521	1795	6917	2053	1863
	0%	1%	1%	1%	1%	1%
grade 6 events	16930	96478	24390	119516	23937	21649
	10%	27%	13%	31%	12%	12%
grade 7 events	23796	52269	24281	45415	26469	24079
	15%	14%	13%	12%	14%	14%

2.2 Compared Parameters

Parameter	Planned	Actual	Parameter	Planned	Actual
Instrument	ACIS	ACIS	Obspar format version number	6	6
Detector	ACIS-456789	ACIS-456789	Obspar file type	PREDICTED	ACTUAL
Grating	NONE	NONE	Obspar update status	NONE	UPDATED
Data mode	FAINT	FAINT	On-chip summing requested	N	N
Observation mode	SECONDARY	SECONDARY	Subarray requested	NONE	NONE
Pointing RA	0	77.04482278064604	Alternating exposures requested	N	N
Pointing Dec	0	54.98747546376004	Primary exposure time	0.000000	3.2
Pointing Roll	0.0	301.0311699904836			
SIM focus pos (mm)	-0.684267	-0.6828225247311905			
SIM defocus (mm)	0	0.8505141146731063			
SIM translation stage pos (mm)	-190.132523	250.466033080201			
SIM translation stage offset (mm)	0	-0.01005468664627074			
Observation start time	167454622.649332	167454621.62461			
Observation start date	2003-04-23T03:10:23	2003-04-23T03:10:21			
Observation end time	167465879.199808	167465878.17509			
Observation end date	2003-04-23T06:17:59	2003-04-23T06:17:58			
Read mode	TIMED	TIMED			

2.3 Aspect

2.4 Star Slots

2.5 FID Slots

A Summary

A.1 Status

V&V Scientist	Beth Sundheim
V&V Date (YYYY-MM-DD)	2006.08.06
V&V Edition	1
V&V Disposition and Status	OK
V&V Charge Time	7.78821483

A.2 Comments