

V&V Reference Report

L2 ASCDS Version : 7.6.8

Observation 60756 - L2 Version 001
Chandra X-Ray Center

L2 Processing Date : Aug 1 2006

Contents

1	Front	2
2	OBI	3
2.1	OBI	3
2.1.1	Images	3
2.1.2	Bias	3
2.1.3	Parameters	4
2.1.4	Events	4
2.2	Compared Parameters	5
2.3	Aspect	6
2.4	Star Slots	8
2.5	FID Slots	8
A	Summary	9
A.1	Status	9
A.2	Comments	9

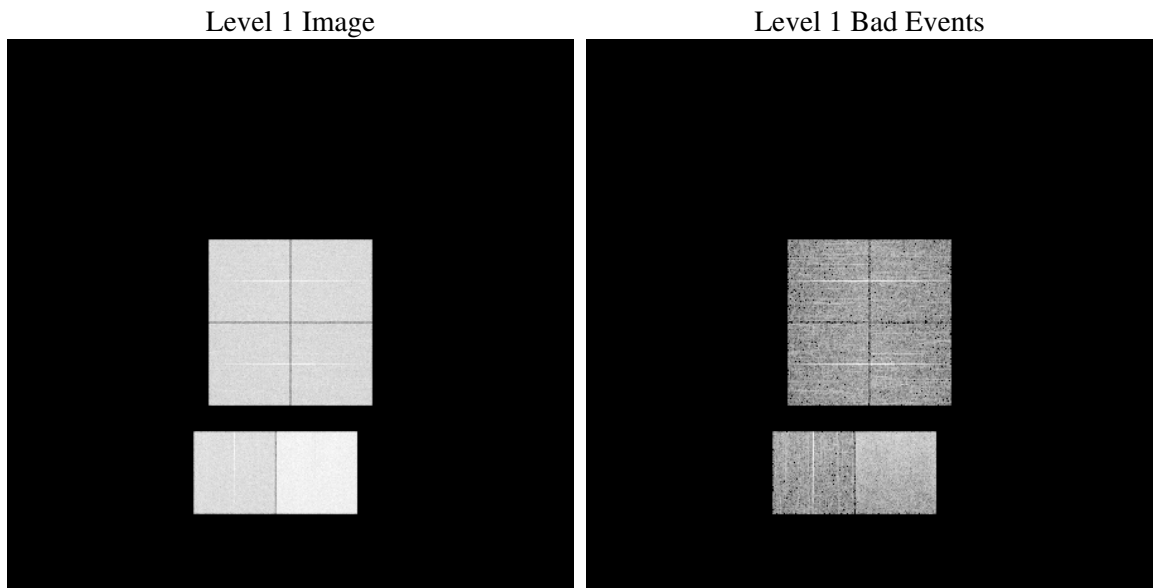
1 Front

seq_num	
obs_id	60756
title	ACIS-012367 diagnostics
observer	CHANDRA engineering request/realtime commanding
object	
dtcycle	0
cycle	P
ra_targ	0.0
dec_targ	0.0
ra_nom	228.03551260103
dec_nom	-58.97802005711
roll_nom	17.331454002655
revision	2
ontime	7795.1999709606
livetime	7696.4924552224
ontime0	4341.2801556885
ontime1	4428.8269054592
ontime2	4143.6606079936
ontime3	4145.8533989191
ontime6	4558.5498389006
ontime7	7795.1999709606
l2events	1167977

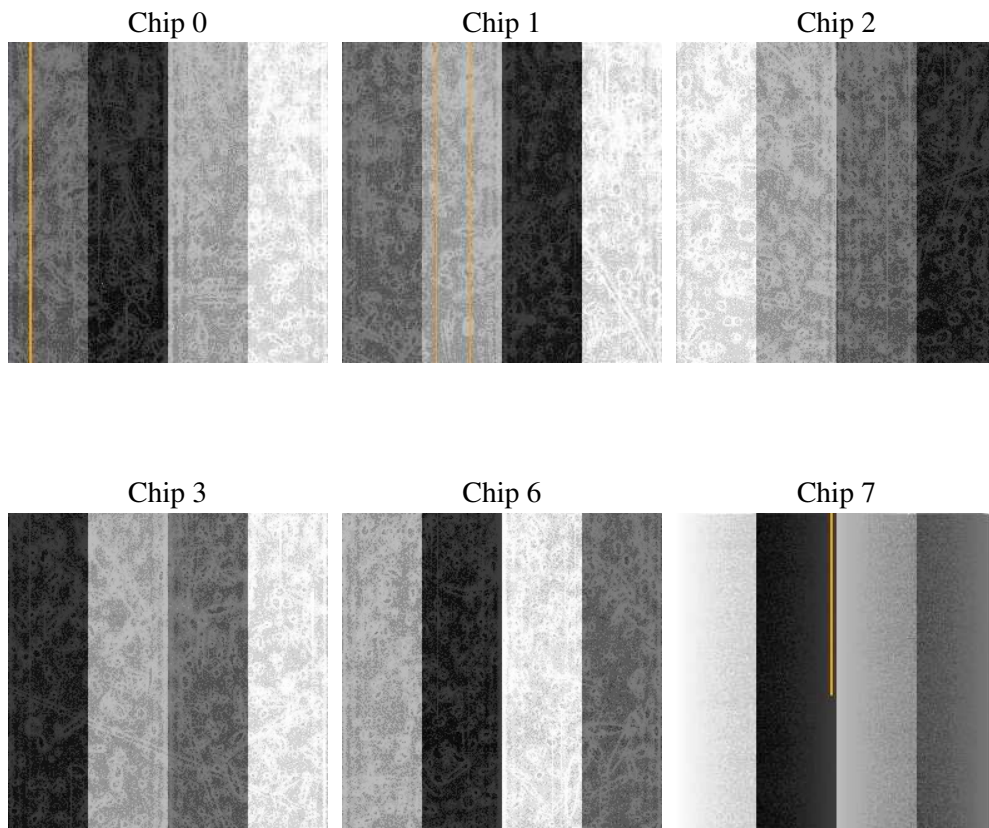
2 OBI

2.1 OBI

2.1.1 Images



2.1.2 Bias



2.1.3 Parameters

obi_num	1
ascdsver	7.6.8
caldbver	3.2.2
date	2006-08-01T06:55:58
revision	2

sched_exp_time	0.0
ontime	7797.8647096753
ontime0	4342.9783574045
ontime1	4430.4840671718
ontime2	4145.2767297029
ontime3	4148.5181376338
ontime6	4560.1249206364
ontime7	7797.8647096753
l1events	1426183

2.1.4 Events

	ccd 0	ccd 1	ccd 2	ccd 3	ccd 6	ccd 7
level 1 events	207109	209787	199706	200924	228208	380449
rejected events	29652	29213	29193	30281	31498	54115
rejected %	14%	13%	14%	15%	13%	14%

	ccd 0	ccd 1	ccd 2	ccd 3	ccd 6	ccd 7
grade 0 events	97888	99470	95291	95712	106505	59884
	47%	47%	47%	47%	46%	15%
grade 1 events	567	446	577	577	524	134
	0%	0%	0%	0%	0%	0%
grade 2 events	30727	31591	28866	29058	33832	97847
	14%	15%	14%	14%	14%	25%
grade 3 events	11418	11627	11095	11102	12220	24317
	5%	5%	5%	5%	5%	6%
grade 4 events	11409	11468	11085	11025	12250	23796
	5%	5%	5%	5%	5%	6%
grade 5 events	1955	2017	1822	2016	2220	6807
	0%	0%	0%	1%	0%	1%
grade 6 events	26137	26540	24176	23863	31903	120612
	12%	12%	12%	11%	13%	31%
grade 7 events	27008	26628	26794	27571	28754	47052
	13%	12%	13%	13%	12%	12%

2.2 Compared Parameters

Parameter	Planned	Actual	Parameter	Planned	Actual
Instrument	ACIS	ACIS	Obspar format version number	6	6
Detector	ACIS-012367	ACIS-012367	Obspar file type	PREDICTED	ACTUAL
Grating	NONE	NONE	Obspar update status	NONE	UPDATED
Data mode	FAINT	FAINT	On-chip summing requested	N	N
Observation mode	SECONDARY	SECONDARY	Subarray requested	NONE	NONE
Pointing RA	0	228.0355126010292	Alternating exposures requested	N	N
Pointing Dec	0	-58.97802005711024	Primary exposure time	0.000000	3.2
Pointing Roll	0.0	17.3314540026554			
SIM focus pos (mm)	-0.782348	-0.7809083437167272			
SIM defocus (mm)	0	0.7524282956875696			
SIM translation stage pos (mm)	-233.592463	250.4635187648994			
SIM translation stage offset (mm)	0	-0.007540371344731511			
Observation start time	167909374.16857	167909373.14386			
Observation start date	2003-04-28T09:29:34	2003-04-28T09:29:33			
Observation end time	167920554.869043	167920553.84433			
Observation end date	2003-04-28T12:35:55	2003-04-28T12:35:53			
Read mode	TIMED	TIMED			

2.3 Aspect

2.4 Star Slots

2.5 FID Slots

A Summary

A.1 Status

V&V Scientist	Jen Lauer
V&V Date (YYYY-MM-DD)	2006.08.01
V&V Edition	1
V&V Disposition and Status	OK
V&V Charge Time	7.79519997

A.2 Comments