

V&V Reference Report

L2 ASCDS Version : 7.6.8

Observation 60754 - L2 Version 001
Chandra X-Ray Center

L2 Processing Date : Aug 1 2006

Contents

1	Front	2
2	OBI	3
2.1	OBI	3
2.1.1	Images	3
2.1.2	Bias	3
2.1.3	Parameters	4
2.1.4	Events	4
2.2	Compared Parameters	5
2.3	Aspect	6
2.4	Star Slots	8
2.5	FID Slots	8
A	Summary	9
A.1	Status	9
A.2	Comments	9

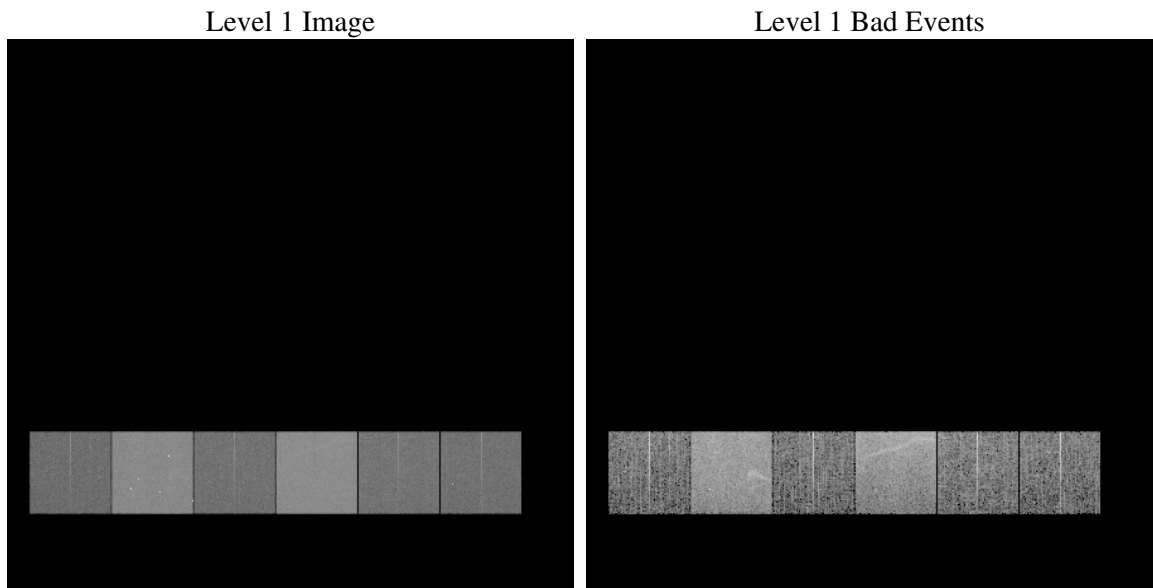
1 Front

seq_num	
obs_id	60754
title	ACIS-456789 diagnostics
observer	CHANDRA engineering request/realtime commanding
object	
dtcycle	0
cycle	P
ra_targ	0.0
dec_targ	0.0
ra_nom	94.532597634836
dec_nom	49.380829373648
roll_nom	285.00612990146
revision	2
ontime	8455.8746390045
livetime	8348.801262809
ontime4	3743.6248775125
ontime5	8459.1566392481
ontime6	3983.4165218472
ontime7	8455.8746390045
ontime8	4174.7186455131
ontime9	4087.0075488389
l2events	1233120

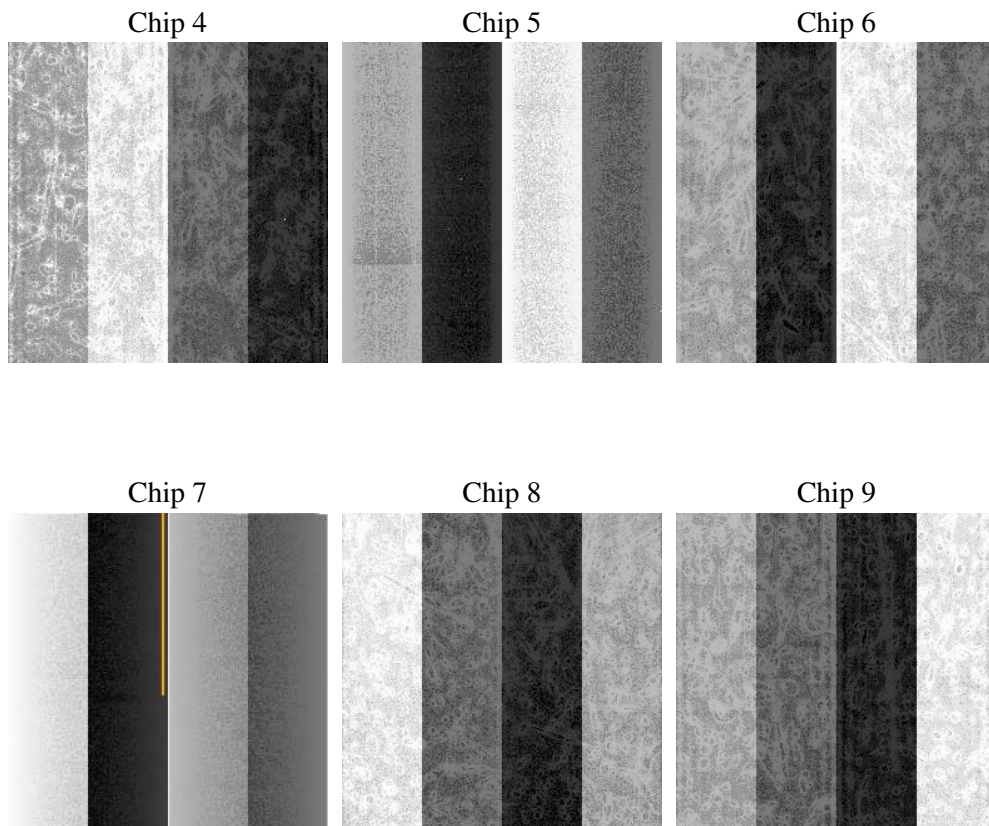
2 OBI

2.1 OBI

2.1.1 Images



2.1.2 Bias



2.1.3 Parameters

obi_num	0
ascdsver	7.6.8
caldsver	3.2.2
date	2006-08-01T06:56:12
revision	2

sched_exp_time	0.0
ontime	8459.0046275258
ontime4	3746.6317460239
ontime5	8462.2455877662
ontime6	3986.464430362
ontime7	8459.0046275258
ontime8	4177.684474051
ontime9	4090.1785773635
l1events	1539798

2.1.4 Events

	ccd 4	ccd 5	ccd 6	ccd 7	ccd 8	ccd 9
level 1 events	173665	370914	194259	399990	208348	192622
rejected events	28769	65136	28198	60152	32570	28616
rejected %	16%	17%	14%	15%	15%	14%

	ccd 4	ccd 5	ccd 6	ccd 7	ccd 8	ccd 9
grade 0 events	84009	37304	90734	60171	96517	90891
	48%	10%	46%	15%	46%	47%
grade 1 events	656	149	484	224	493	512
	0%	0%	0%	0%	0%	0%
grade 2 events	23403	145237	28652	103448	30665	28369
	13%	39%	14%	25%	14%	14%
grade 3 events	9575	10071	10275	25025	11415	10385
	5%	2%	5%	6%	5%	5%
grade 4 events	9553	9614	10410	24462	11225	10232
	5%	2%	5%	6%	5%	5%
grade 5 events	1828	7060	1958	7415	2319	2051
	1%	1%	1%	1%	1%	1%
grade 6 events	18499	103652	26140	126855	26124	24267
	10%	27%	13%	31%	12%	12%
grade 7 events	26142	57827	25606	52390	29590	25915
	15%	15%	13%	13%	14%	13%

2.2 Compared Parameters

Parameter	Planned	Actual	Parameter	Planned	Actual
Instrument	ACIS	ACIS	Obspar format version number	6	6
Detector	ACIS-456789	ACIS-456789	Obspar file type	PREDICTED	ACTUAL
Grating	NONE	NONE	Obspar update status	NONE	UPDATED
Data mode	FAINT	FAINT	On-chip summing requested	N	N
Observation mode	SECONDARY	SECONDARY	Subarray requested	NONE	NONE
Pointing RA	0	94.53259763483601	Alternating exposures requested	N	N
Pointing Dec	0	49.38082937364842	Primary exposure time	0.000000	3.2
Pointing Roll	0.0	285.0061299014604			
SIM focus pos (mm)	-0.684267	-0.7809083437167272			
SIM defocus (mm)	0	0.7524282956875696			
SIM translation stage pos (mm)	-190.132523	250.4635187648994			
SIM translation stage offset (mm)	0	-0.007540371344731511			
Observation start time	167944443.520055	167944442.49534			
Observation start date	2003-04-28T19:14:04	2003-04-28T19:14:02			
Observation end time	167968313.721065	167968312.69635			
Observation end date	2003-04-29T01:51:54	2003-04-29T01:51:52			
Read mode	TIMED	TIMED			

2.3 Aspect

2.4 Star Slots

2.5 FID Slots

A Summary

A.1 Status

V&V Scientist	Jen Lauer
V&V Date (YYYY-MM-DD)	2006.08.01
V&V Edition	1
V&V Disposition and Status	OK
V&V Charge Time	8.45587463

A.2 Comments