

V&V Reference Report

L2 ASCDS Version : 7.6.8

Observation 60730 - L2 Version 001
Chandra X-Ray Center

L2 Processing Date : Aug 3 2006

Contents

1	Front	2
2	OBI	3
2.1	OBI	3
2.1.1	Images	3
2.1.2	Bias	3
2.1.3	Parameters	4
2.1.4	Events	4
2.2	Compared Parameters	5
2.3	Aspect	6
2.4	Star Slots	8
2.5	FID Slots	8
A	Summary	9
A.1	Status	9
A.2	Comments	9

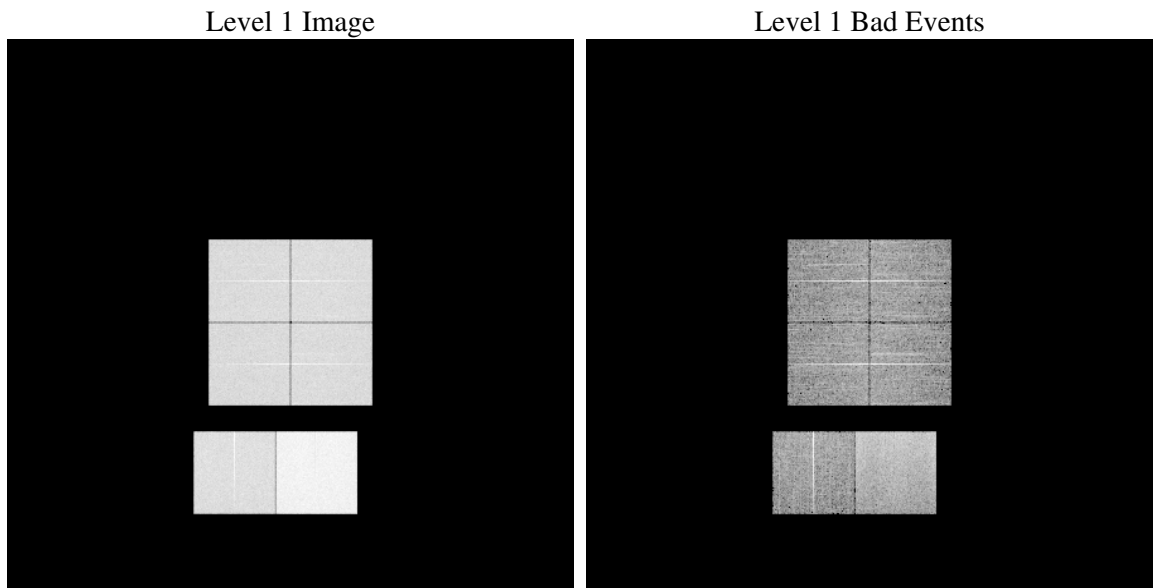
1 Front

seq_num	
obs_id	60730
title	ACIS-012367 diagnostics
observer	CHANDRA engineering request/realtime commanding
object	
dtcycle	0
cycle	P
ra_targ	0.0
dec_targ	0.0
ra_nom	296.9815912736
dec_nom	-35.975593624013
roll_nom	88.499413951198
revision	2
ontime	11398.296679527
livetime	11253.96458374
ontime0	6459.0950923264
ontime1	6585.5346110165
ontime2	6086.463460505
ontime3	6264.5543689728
ontime6	6698.9905346334
ontime7	11398.296679527
l2events	1686356

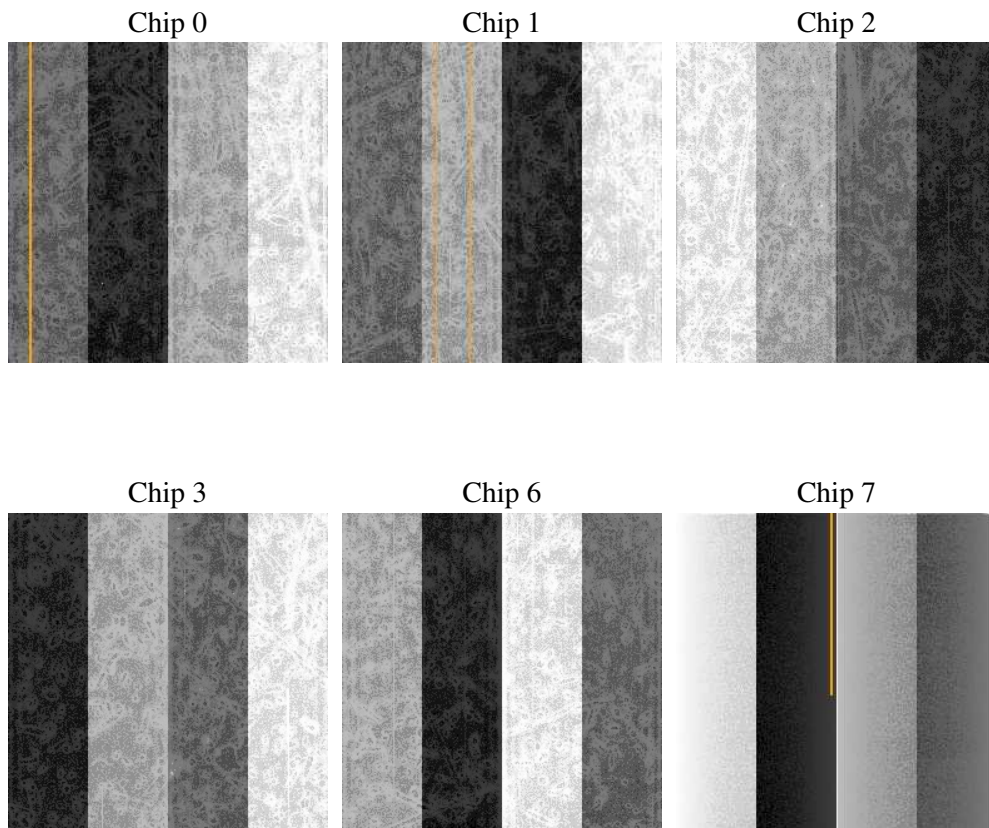
2 OBI

2.1 OBI

2.1.1 Images



2.1.2 Bias



2.1.3 Parameters

obi_num	0
ascdsver	7.6.8
caldbver	3.2.2
date	2006-08-03T09:27:54
revision	2

sched_exp_time	0.0
ontime	11398.606103182
ontime0	6459.3634759784
ontime1	6585.7619546652
ontime2	6086.6497641504
ontime3	6264.9048326313
ontime6	6699.1966802776
ontime7	11398.606103182
l1events	2068182

2.1.4 Events

	ccd 0	ccd 1	ccd 2	ccd 3	ccd 6	ccd 7
level 1 events	299999	308539	289476	299260	327659	543249
rejected events	42914	45182	43707	45597	47235	79348
rejected %	14%	14%	15%	15%	14%	14%

	ccd 0	ccd 1	ccd 2	ccd 3	ccd 6	ccd 7
grade 0 events	141769	144555	137505	141843	151714	83131
	47%	46%	47%	47%	46%	15%
grade 1 events	766	696	881	801	743	248
	0%	0%	0%	0%	0%	0%
grade 2 events	44778	46843	41646	43394	48672	140770
	14%	15%	14%	14%	14%	25%
grade 3 events	16542	16594	16022	16617	17479	33821
	5%	5%	5%	5%	5%	6%
grade 4 events	16353	16766	16008	16493	17545	33579
	5%	5%	5%	5%	5%	6%
grade 5 events	2981	3116	2684	3062	3424	10052
	0%	1%	0%	1%	1%	1%
grade 6 events	37670	38599	34623	35316	45014	172600
	12%	12%	11%	11%	13%	31%
grade 7 events	39140	41370	40107	41734	43068	69048
	13%	13%	13%	13%	13%	12%

2.2 Compared Parameters

Parameter	Planned	Actual	Parameter	Planned	Actual
Instrument	ACIS	ACIS	Obspar format version number	6	6
Detector	ACIS-012367	ACIS-012367	Obspar file type	PREDICTED	ACTUAL
Grating	NONE	NONE	Obspar update status	NONE	UPDATED
Data mode	FAINT	FAINT	On-chip summing requested	N	N
Observation mode	SECONDARY	SECONDARY	Subarray requested	NONE	NONE
Pointing RA	0	296.9815912735979	Alternating exposures requested	N	N
Pointing Dec	0	-35.97559362401302	Primary exposure time	0.000000	3.2
Pointing Roll	0.0	88.4994139511976			
SIM focus pos (mm)	-0.782348	-0.7809083437167272			
SIM defocus (mm)	0	0.7524282956875696			
SIM translation stage pos (mm)	-233.592463	250.466033080201			
SIM translation stage offset (mm)	0	-0.01005468664627074			
Observation start time	170182032.964738	170182031.94002			
Observation start date	2003-05-24T16:47:13	2003-05-24T16:47:11			
Observation end time	170233793.416935	170233792.39221			
Observation end date	2003-05-25T07:09:53	2003-05-25T07:09:52			
Read mode	TIMED	TIMED			

2.3 Aspect

2.4 Star Slots

2.5 FID Slots

A Summary

A.1 Status

V&V Scientist	Beth Sundheim
V&V Date (YYYY-MM-DD)	2006.08.03
V&V Edition	1
V&V Disposition and Status	OK
V&V Charge Time	11.3982966

A.2 Comments