

V&V Reference Report

L2 ASCDS Version : 7.6.8

Observation 60725 - L2 Version 001
Chandra X-Ray Center

L2 Processing Date : Aug 3 2006

Contents

1	Front	2
2	OBI	3
2.1	OBI	3
2.1.1	Images	3
2.1.2	Bias	3
2.1.3	Parameters	4
2.1.4	Events	4
2.2	Compared Parameters	5
2.3	Aspect	6
2.4	Star Slots	8
2.5	FID Slots	8
A	Summary	9
A.1	Status	9
A.2	Comments	9

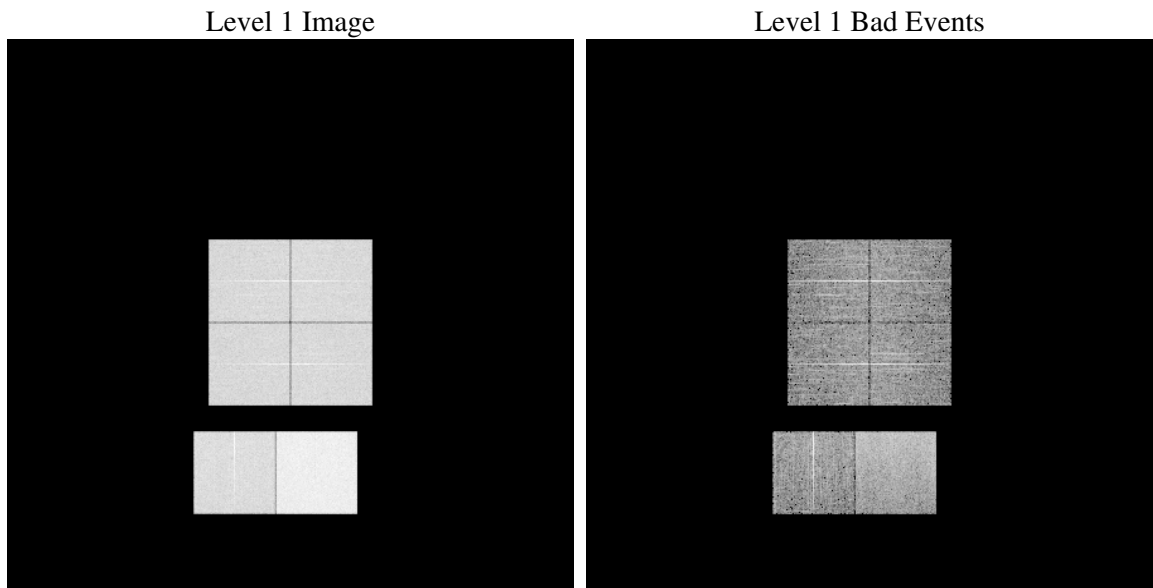
1 Front

seq_num	
obs_id	60725
title	ACIS-012367 diagnostics
observer	CHANDRA engineering request/realtime commanding
object	
dtcycle	0
cycle	P
ra_targ	0.0
dec_targ	0.0
ra_nom	303.78039372145
dec_nom	-37.975927084924
roll_nom	89.762121749904
revision	2
ontime	8447.9999685287
livetime	8341.0263061524
ontime0	4996.3627954125
ontime1	5109.7970729172
ontime2	4801.9038020372
ontime3	4831.0721957982
ontime6	5173.7627796233
ontime7	8447.9999685287
l2events	1258580

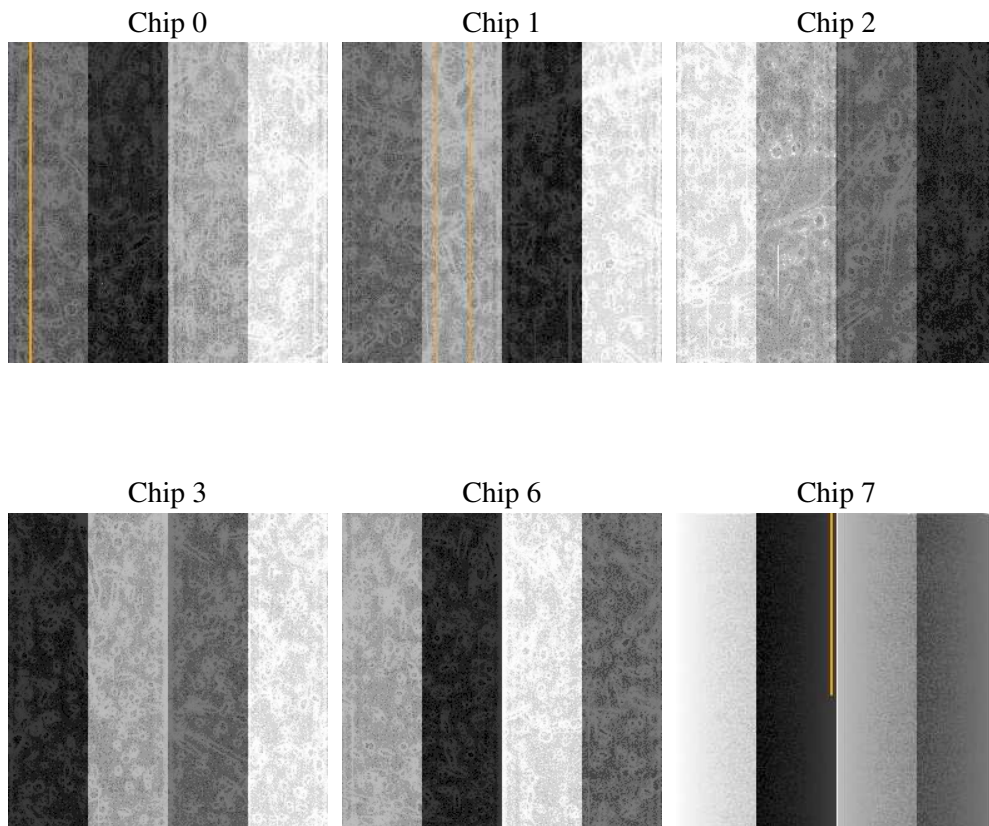
2 OBI

2.1 OBI

2.1.1 Images



2.1.2 Bias



2.1.3 Parameters

obi_num	0
ascdsver	7.6.8
caldbver	3.2.2
date	2006-08-03T09:58:25
revision	2

sched_exp_time	0.0
ontime	8465.5014888346
ontime0	5007.3823950887
ontime1	5120.8166227937
ontime2	4812.9234017134
ontime3	4842.0917954743
ontime6	5188.877825588
ontime7	8465.5014888346
l1events	1541107

2.1.4 Events

	ccd 0	ccd 1	ccd 2	ccd 3	ccd 6	ccd 7
level 1 events	225736	231333	219888	223995	248454	391701
rejected events	32481	32088	31852	33223	36926	56976
rejected %	14%	13%	14%	14%	14%	14%

	ccd 0	ccd 1	ccd 2	ccd 3	ccd 6	ccd 7
grade 0 events	107152	109448	106010	107372	115617	60705
	47%	47%	48%	47%	46%	15%
grade 1 events	603	538	622	644	555	137
	0%	0%	0%	0%	0%	0%
grade 2 events	33663	35544	32020	32528	36604	100808
	14%	15%	14%	14%	14%	25%
grade 3 events	12449	12671	12296	12423	13122	25006
	5%	5%	5%	5%	5%	6%
grade 4 events	12342	12832	12213	12518	13052	24160
	5%	5%	5%	5%	5%	6%
grade 5 events	2112	2306	2038	2252	2495	7317
	0%	0%	0%	1%	1%	1%
grade 6 events	28168	29252	26010	26426	33775	124824
	12%	12%	11%	11%	13%	31%
grade 7 events	29247	28742	28679	29832	33234	48744
	12%	12%	13%	13%	13%	12%

2.2 Compared Parameters

Parameter	Planned	Actual	Parameter	Planned	Actual
Instrument	ACIS	ACIS	Obspar format version number	6	6
Detector	ACIS-012367	ACIS-012367	Obspar file type	PREDICTED	ACTUAL
Grating	NONE	NONE	Obspar update status	NONE	UPDATED
Data mode	FAINT	FAINT	On-chip summing requested	N	N
Observation mode	SECONDARY	SECONDARY	Subarray requested	NONE	NONE
Pointing RA	0	303.7803937214518	Alternating exposures requested	N	N
Pointing Dec	0	-37.97592708492361	Primary exposure time	0.000000	3.2
Pointing Roll	0.0	89.7621217499036			
SIM focus pos (mm)	-0.782348	-0.7809083437167272			
SIM defocus (mm)	0	0.7524282956875696			
SIM translation stage pos (mm)	-233.592463	250.466033080201			
SIM translation stage offset (mm)	0	-0.01005468664627074			
Observation start time	170457895.32644	170457894.30172			
Observation start date	2003-05-27T21:24:55	2003-05-27T21:24:54			
Observation end time	170481800.377455	170481799.35273			
Observation end date	2003-05-28T04:03:20	2003-05-28T04:03:19			
Read mode	TIMED	TIMED			

2.3 Aspect

2.4 Star Slots

2.5 FID Slots

A Summary

A.1 Status

V&V Scientist	Beth Sundheim
V&V Date (YYYY-MM-DD)	2006.08.03
V&V Edition	1
V&V Disposition and Status	OK
V&V Charge Time	8.44799996

A.2 Comments