

V&V Reference Report

L2 ASCDS Version : 7.6.8.1

Observation 60694 - L2 Version 001
Chandra X-Ray Center

L2 Processing Date : Aug 7 2006

Contents

1	Front	2
2	OBI	3
2.1	OBI	3
2.1.1	Images	3
2.1.2	Bias	3
2.1.3	Parameters	4
2.1.4	Events	4
2.2	Compared Parameters	5
2.3	Aspect	6
2.4	Star Slots	8
2.5	FID Slots	8
A	Summary	9
A.1	Status	9
A.2	Comments	9

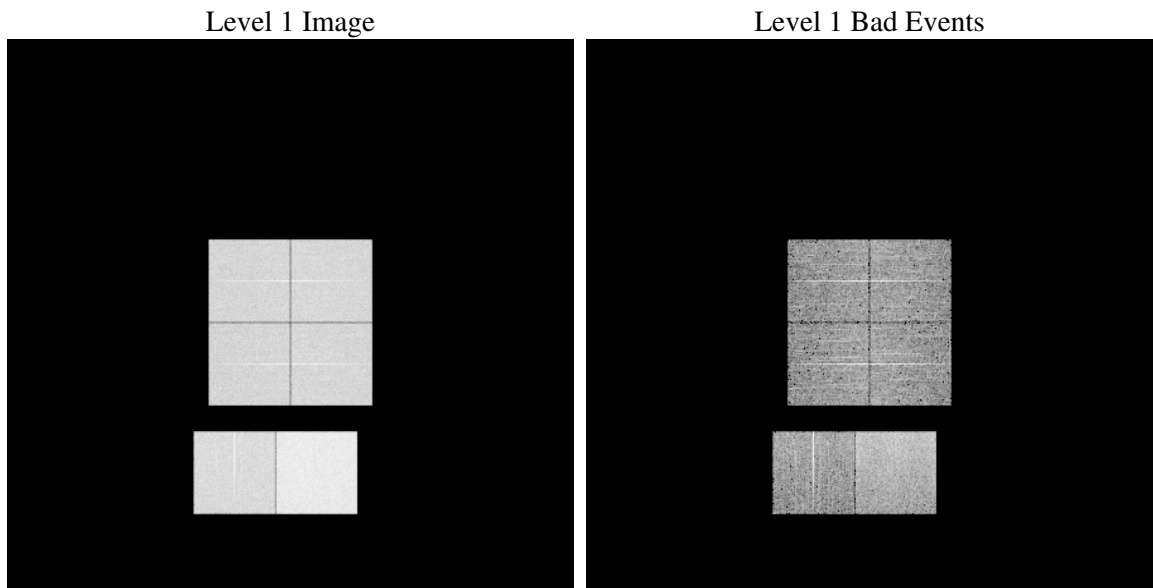
1 Front

seq_num	
obs_id	60694
title	ACIS-012367 diagnostics
observer	CHANDRA engineering request/realtime commanding
object	
dtcycle	0
cycle	P
ra_targ	0.0
dec_targ	0.0
ra_nom	145.30241056064
dec_nom	-8.2284972909889
roll_nom	241.88539607729
revision	2
ontime	8358.3999688625
livetime	8252.5608756326
ontime0	4974.8319294453
ontime1	5102.3294318914
ontime2	4777.1307418644
ontime3	4968.3504178226
ontime6	5357.2666872144
ontime7	8358.3999688625
l2events	1251662

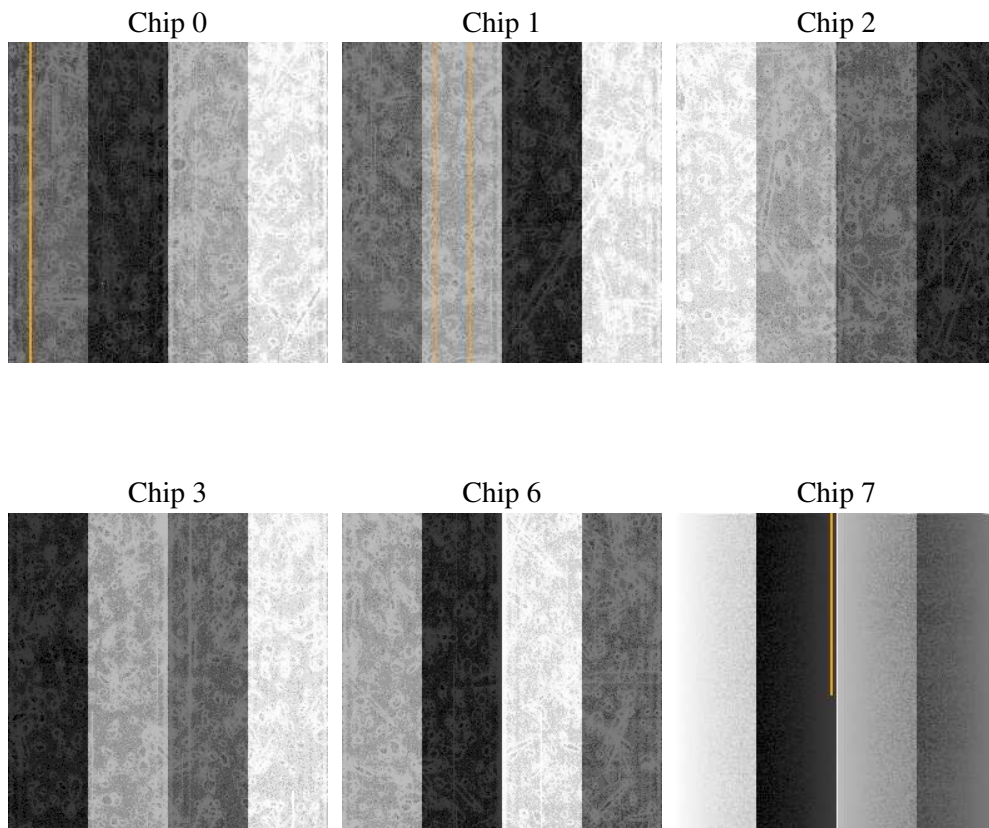
2 OBI

2.1 OBI

2.1.1 Images



2.1.2 Bias



2.1.3 Parameters

obi_num	0
ascdsver	7.6.8.1
caldbver	3.2.2
date	2006-08-07T06:48:18
revision	2

sched_exp_time	0.0
ontime	8468.7308897376
ontime0	5039.7892469764
ontime1	5166.1873858273
ontime2	4845.3290296495
ontime3	5026.8258546889
ontime6	5431.9469952285
ontime7	8468.7308897376
l1events	1541526

2.1.4 Events

	ccd 0	ccd 1	ccd 2	ccd 3	ccd 6	ccd 7
level 1 events	224008	230650	220127	227435	253337	385969
rejected events	31842	34166	33917	34307	36904	60204
rejected %	14%	14%	15%	15%	14%	15%

	ccd 0	ccd 1	ccd 2	ccd 3	ccd 6	ccd 7
grade 0 events	107443	109233	106325	110181	119802	58402
	47%	47%	48%	48%	47%	15%
grade 1 events	578	508	635	613	542	141
	0%	0%	0%	0%	0%	0%
grade 2 events	33961	35255	31802	33009	37715	100333
	15%	15%	14%	14%	14%	25%
grade 3 events	12448	12570	12341	12728	13497	24091
	5%	5%	5%	5%	5%	6%
grade 4 events	12528	12648	12280	12826	13671	23688
	5%	5%	5%	5%	5%	6%
grade 5 events	2213	2208	2074	2272	2522	7116
	0%	0%	0%	0%	0%	1%
grade 6 events	28254	29264	26077	26632	34741	123536
	12%	12%	11%	11%	13%	32%
grade 7 events	26583	28964	28593	29174	30847	48662
	11%	12%	12%	12%	12%	12%

2.2 Compared Parameters

Parameter	Planned	Actual	Parameter	Planned	Actual
Instrument	ACIS	ACIS	Obspar format version number	6	6
Detector	ACIS-012367	ACIS-012367	Obspar file type	PREDICTED	ACTUAL
Grating	NONE	NONE	Obspar update status	NONE	UPDATED
Data mode	FAINT	FAINT	On-chip summing requested	N	N
Observation mode	SECONDARY	SECONDARY	Subarray requested	NONE	NONE
Pointing RA	0	145.3024105606384	Alternating exposures requested	N	N
Pointing Dec	0	-8.228497290988873	Primary exposure time	0.000000	3.2
Pointing Roll	0.0	241.8853960772863			
SIM focus pos (mm)	-0.782348	-0.6828225247311905			
SIM defocus (mm)	0	0.8505141146731063			
SIM translation stage pos (mm)	-233.592463	250.466033080201			
SIM translation stage offset (mm)	0	-0.01005468664627074			
Observation start time	171830124.38464	171830123.35994			
Observation start date	2003-06-12T18:35:24	2003-06-12T18:35:23			
Observation end time	171852291.03558	171852290.01088			
Observation end date	2003-06-13T00:44:51	2003-06-13T00:44:50			
Read mode	TIMED	TIMED			

2.3 Aspect

2.4 Star Slots

2.5 FID Slots

A Summary

A.1 Status

V&V Scientist	Jen Lauer
V&V Date (YYYY-MM-DD)	2006.08.07
V&V Edition	1
V&V Disposition and Status	OK
V&V Charge Time	8.35839996

A.2 Comments

The ACIS focal plane temperature was above calibration limits for the first 3 ksec of the obsid.