

V&V Reference Report

L2 ASCDS Version : 7.6.8.1

Observation 60679 - L2 Version 001
Chandra X-Ray Center

L2 Processing Date : Aug 10 2006

Contents

1	Front	2
2	OBI	3
2.1	OBI	3
2.1.1	Images	3
2.1.2	Bias	3
2.1.3	Parameters	4
2.1.4	Events	4
2.2	Compared Parameters	5
2.3	Aspect	6
2.4	Star Slots	8
2.5	FID Slots	8
A	Summary	9
A.1	Status	9
A.2	Comments	9

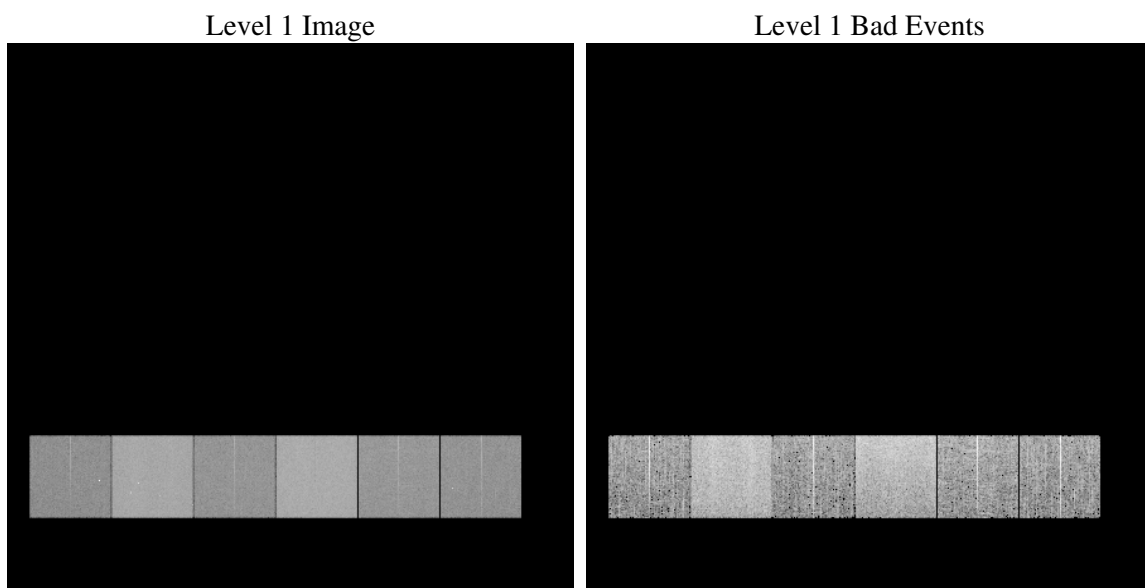
1 Front

seq_num	
obs_id	60679
title	ACIS-456789 diagnostics
observer	CHANDRA engineering request/realtime commanding
object	
dtcycle	0
cycle	P
ra_targ	0.0
dec_targ	0.0
ra_nom	294.96244158463
dec_nom	41.993768203623
roll_nom	159.69291778997
revision	2
ontime	8457.599968493
livetime	8350.5047451366
ontime4	4077.4998900294
ontime5	8457.599968493
ontime6	4566.8497730494
ontime7	8457.599968493
ontime8	4741.9461382329
ontime9	4430.6053836644
l2events	1238680

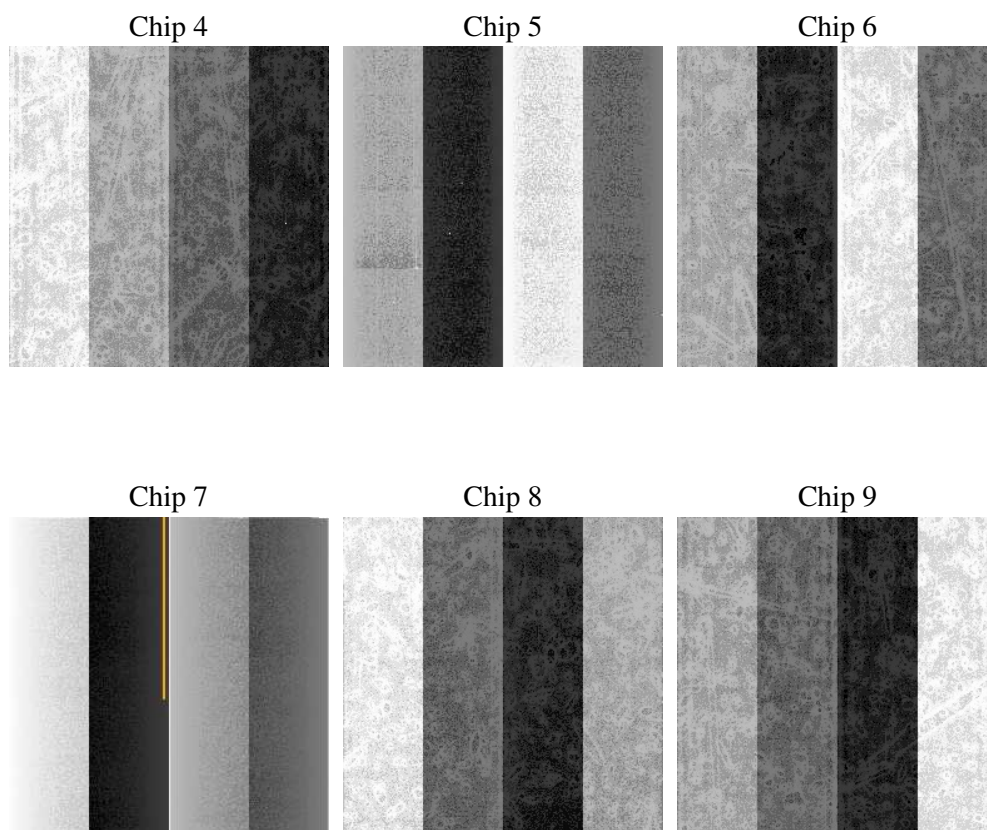
2 OBI

2.1 OBI

2.1.1 Images



2.1.2 Bias



2.1.3 Parameters

obi_num	1
ascdsver	7.6.8.1
caldsver	3.2.2
date	2006-08-10T14:35:05
revision	2

sched_exp_time	0.0
ontime	8462.2556096017
ontime4	4080.4556511641
ontime5	8462.2556096017
ontime6	4569.8465741873
ontime7	8462.2556096017
ontime8	4744.8608593941
ontime9	4433.7253048122
l1events	1539064

2.1.4 Events

	ccd 4	ccd 5	ccd 6	ccd 7	ccd 8	ccd 9
level 1 events	179545	345492	210266	379550	223878	200333
rejected events	28695	60829	29834	55780	33034	30181
rejected %	15%	17%	14%	14%	14%	15%

	ccd 4	ccd 5	ccd 6	ccd 7	ccd 8	ccd 9
grade 0 events	89412	28940	98665	55512	105834	94533
	49%	8%	46%	14%	47%	47%
grade 1 events	586	120	410	131	507	474
	0%	0%	0%	0%	0%	0%
grade 2 events	22609	136914	31473	100402	33095	28740
	12%	39%	14%	26%	14%	14%
grade 3 events	9829	8721	10900	23139	12135	10766
	5%	2%	5%	6%	5%	5%
grade 4 events	9933	8400	10945	22708	11965	10856
	5%	2%	5%	5%	5%	5%
grade 5 events	1772	6163	2146	6815	2396	2115
	0%	1%	1%	1%	1%	1%
grade 6 events	19181	101796	28571	122145	27955	25384
	10%	29%	13%	32%	12%	12%
grade 7 events	26223	54438	27156	48698	29991	27465
	14%	15%	12%	12%	13%	13%

2.2 Compared Parameters

Parameter	Planned	Actual	Parameter	Planned	Actual
Instrument	ACIS	ACIS	Obspar format version number	6	6
Detector	ACIS-456789	ACIS-456789	Obspar file type	PREDICTED	ACTUAL
Grating	NONE	NONE	Obspar update status	NONE	UPDATED
Data mode	FAINT	FAINT	On-chip summing requested	N	N
Observation mode	SECONDARY	SECONDARY	Subarray requested	NONE	NONE
Pointing RA	0	294.9624415846299	Alternating exposures requested	N	N
Pointing Dec	0	41.99376820362303	Primary exposure time	0.000000	3.2
Pointing Roll	0.0	159.6929177899672			
SIM focus pos (mm)	-0.684267	-0.6828225247311905			
SIM defocus (mm)	0	0.8505141146731063			
SIM translation stage pos (mm)	-190.132523	250.466033080201			
SIM translation stage offset (mm)	0	-0.01005468664627074			
Observation start time	172975361.033326	172975360.00861			
Observation start date	2003-06-26T00:42:41	2003-06-26T00:42:40			
Observation end time	172997779.834279	172997778.80957			
Observation end date	2003-06-26T06:56:20	2003-06-26T06:56:18			
Read mode	TIMED	TIMED			

2.3 Aspect

2.4 Star Slots

2.5 FID Slots

A Summary

A.1 Status

V&V Scientist	Jen Lauer
V&V Date (YYYY-MM-DD)	2006.08.10
V&V Edition	1
V&V Disposition and Status	OK
V&V Charge Time	8.45759996

A.2 Comments

The ACIS focal plane temperature was above calibration limits for the entire observation.