

V&V Reference Report

L2 ASCDS Version : 7.6.8

Observation 60665 - L2 Version 001
Chandra X-Ray Center

L2 Processing Date : Jul 14 2006

Contents

1	Front	2
2	OBI	3
2.1	OBI	3
2.1.1	Images	3
2.1.2	Bias	3
2.1.3	Parameters	4
2.1.4	Events	4
2.2	Compared Parameters	5
2.3	Aspect	6
2.4	Star Slots	8
2.5	FID Slots	8
A	Summary	9
A.1	Status	9
A.2	Comments	9

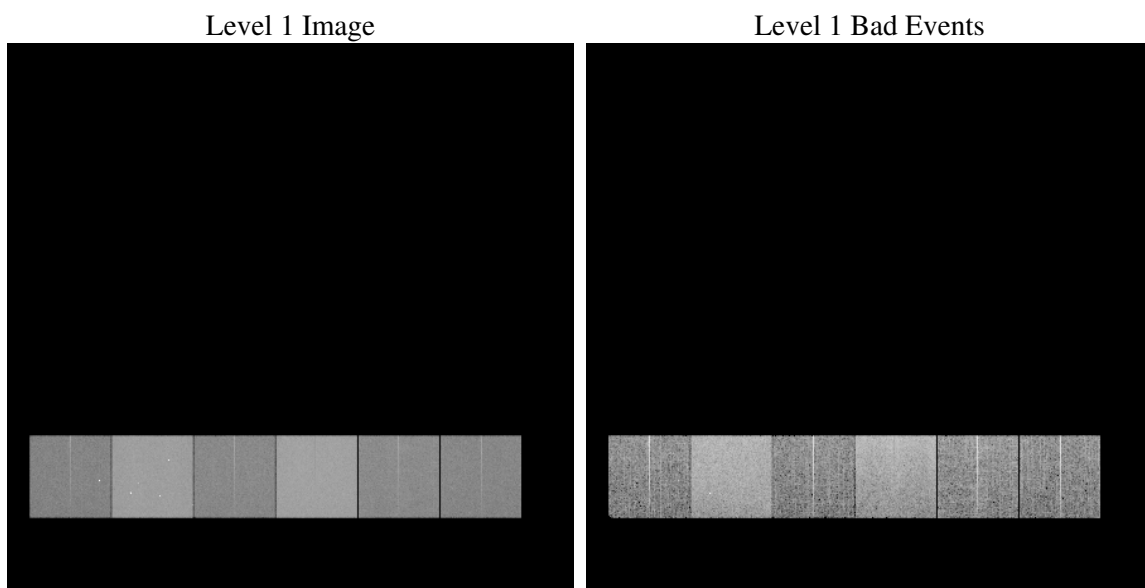
1 Front

seq_num	
obs_id	60665
title	ACIS-456789 diagnostics
observer	CHANDRA engineering request/realtime commanding
object	
dtcycle	0
cycle	P
ra_targ	0.0
dec_targ	0.0
ra_nom	357.9761054508
dec_nom	0.015719487311725
roll_nom	113.77763841611
revision	2
ontime	12201.599954545
livetime	12047.095949
ontime4	5636.7799796462
ontime5	12201.599954545
ontime6	6126.1301140785
ontime7	12201.599954545
ontime8	6304.4673217833
ontime9	5921.8239035606
l2events	1780483

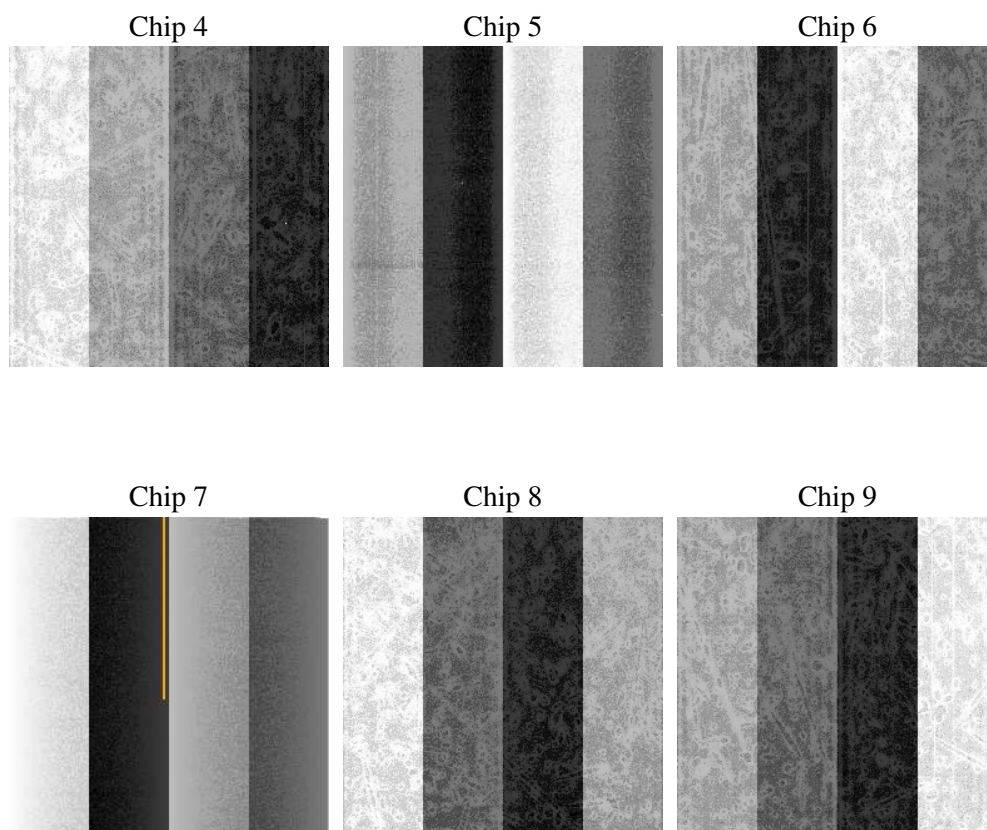
2 OBI

2.1 OBI

2.1.1 Images



2.1.2 Bias



2.1.3 Parameters

obi_num	0
ascdsver	7.6.8
caldbver	3.2.2
date	2006-07-14T16:52:05
revision	2

sched_exp_time	0.0
ontime	12205.625069499
ontime4	5639.3969084918
ontime5	12205.625069499
ontime6	6128.7880829275
ontime7	12205.625069499
ontime8	6307.0432106555
ontime9	5924.6049924195
l1events	2208206

2.1.4 Events

	ccd 4	ccd 5	ccd 6	ccd 7	ccd 8	ccd 9
level 1 events	255261	518970	290227	561982	307598	274168
rejected events	40645	87656	40606	79185	47152	41316
rejected %	15%	16%	13%	14%	15%	15%

	ccd 4	ccd 5	ccd 6	ccd 7	ccd 8	ccd 9
grade 0 events	124548	58020	135776	90364	142635	127943
	48%	11%	46%	16%	46%	46%
grade 1 events	833	334	599	239	693	699
	0%	0%	0%	0%	0%	0%
grade 2 events	34632	201233	43111	143759	45523	40274
	13%	38%	14%	25%	14%	14%
grade 3 events	14190	15403	15334	36567	16647	14718
	5%	2%	5%	6%	5%	5%
grade 4 events	13991	14902	15509	36102	16751	14699
	5%	2%	5%	6%	5%	5%
grade 5 events	2635	9554	2941	10206	3432	3000
	1%	1%	1%	1%	1%	1%
grade 6 events	27337	141861	40034	176131	39024	35340
	10%	27%	13%	31%	12%	12%
grade 7 events	37095	77663	36923	68614	42893	37495
	14%	14%	12%	12%	13%	13%

2.2 Compared Parameters

Parameter	Planned	Actual	Parameter	Planned	Actual
Instrument	ACIS	ACIS	Obspar format version number	6	6
Detector	ACIS-456789	ACIS-456789	Obspar file type	PREDICTED	ACTUAL
Grating	NONE	NONE	Obspar update status	NONE	UPDATED
Data mode	FAINT	FAINT	On-chip summing requested	N	N
Observation mode	SECONDARY	SECONDARY	Subarray requested	NONE	NONE
Pointing RA	0	357.9761054508023	Alternating exposures requested	N	N
Pointing Dec	0	0.01571948731172506	Primary exposure time	0.000000	3.2
Pointing Roll	0.0	113.7776384161064			
SIM focus pos (mm)	-0.684267	-0.6828225247311905			
SIM defocus (mm)	0	0.8505141146731063			
SIM translation stage pos (mm)	-190.132523	250.466033080201			
SIM translation stage offset (mm)	0	-0.01005468664627074			
Observation start time	174303045.639851	174303044.61512			
Observation start date	2003-07-11T09:30:46	2003-07-11T09:30:44			
Observation end time	174345376.091657	174345375.06692			
Observation end date	2003-07-11T21:16:16	2003-07-11T21:16:15			
Read mode	TIMED	TIMED			

2.3 Aspect

2.4 Star Slots

2.5 FID Slots

A Summary

A.1 Status

V&V Scientist	Beth Sundheim
V&V Date (YYYY-MM-DD)	2006.07.14
V&V Edition	1
V&V Disposition and Status	OK
V&V Charge Time	12.2015999

A.2 Comments