

V&V Reference Report

L2 ASCDS Version : 7.6.8

Observation 60608 - L2 Version 001
Chandra X-Ray Center

L2 Processing Date : Jul 12 2006

Contents

1	Front	2
2	OBI	3
2.1	OBI	3
2.1.1	Images	3
2.1.2	Bias	3
2.1.3	Parameters	4
2.1.4	Events	4
2.2	Compared Parameters	5
2.3	Aspect	6
2.4	Star Slots	8
2.5	FID Slots	8
A	Summary	9
A.1	Status	9
A.2	Comments	9

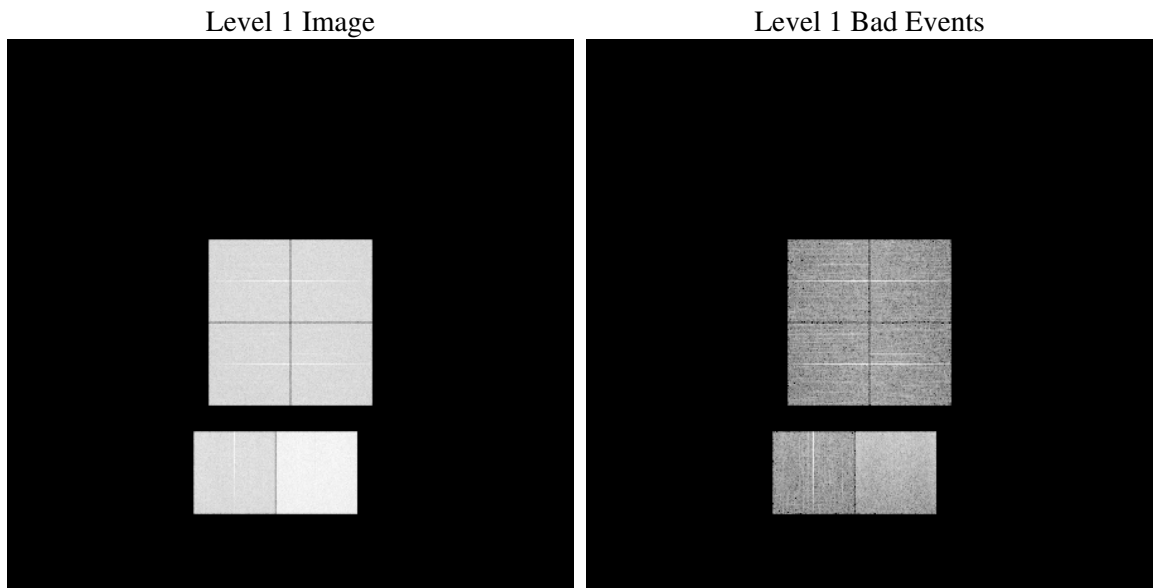
1 Front

seq_num	
obs_id	60608
title	ACIS-012367 diagnostics
observer	CHANDRA engineering request/realtime commanding
object	
dtcycle	0
cycle	P
ra_targ	0.0
dec_targ	0.0
ra_nom	29.073500536774
dec_nom	29.41687560056
roll_nom	110.97415450446
revision	2
ontime	11810.671479702
livetime	11661.117645893
ontime0	6391.8094334006
ontime1	6495.5624575317
ontime2	6113.1665565968
ontime3	6268.5702446997
ontime6	6609.077947706
ontime7	11810.671479702
l2events	1751143

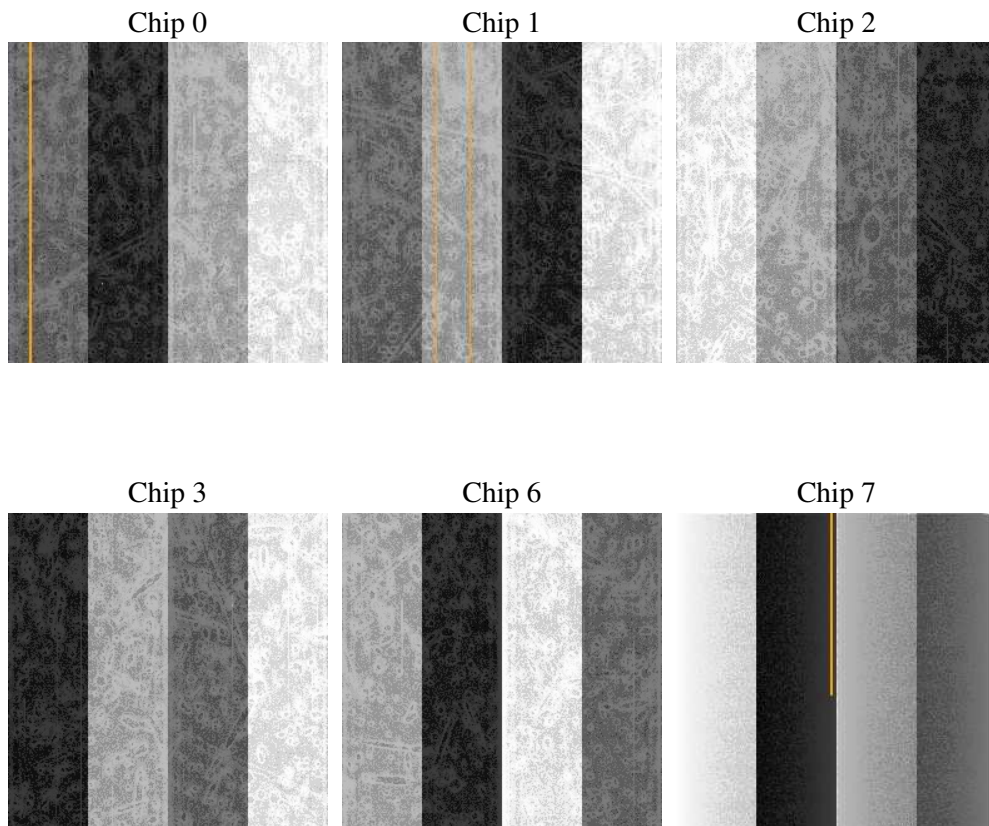
2 OBI

2.1 OBI

2.1.1 Images



2.1.2 Bias



2.1.3 Parameters

obi_num	0
ascdsver	7.6.8
caldbver	3.2.2
date	2006-07-13T01:13:26
revision	2

sched_exp_time	0.0
ontime	11813.447163612
ontime0	6394.544077307
ontime1	6498.2560614347
ontime2	6115.8191204965
ontime3	6271.3869686127
ontime6	6611.6894716322
ontime7	11813.447163612
l1events	2144870

2.1.4 Events

	ccd 0	ccd 1	ccd 2	ccd 3	ccd 6	ccd 7
level 1 events	308647	312820	298713	308390	333981	582319
rejected events	45179	44936	45169	46559	48473	82894
rejected %	14%	14%	15%	15%	14%	14%

	ccd 0	ccd 1	ccd 2	ccd 3	ccd 6	ccd 7
grade 0 events	144229	145748	141234	145834	153248	91631
	46%	46%	47%	47%	45%	15%
grade 1 events	896	774	894	913	856	258
	0%	0%	0%	0%	0%	0%
grade 2 events	45746	47609	42396	44312	48791	151629
	14%	15%	14%	14%	14%	26%
grade 3 events	16760	16910	16221	16897	17485	36121
	5%	5%	5%	5%	5%	6%
grade 4 events	16860	16728	16727	16900	17652	35285
	5%	5%	5%	5%	5%	6%
grade 5 events	2924	3072	2746	3099	3346	10237
	0%	0%	0%	1%	1%	1%
grade 6 events	40003	41024	37086	38026	48462	184880
	12%	13%	12%	12%	14%	31%
grade 7 events	41229	40955	41409	42409	44141	72278
	13%	13%	13%	13%	13%	12%

2.2 Compared Parameters

Parameter	Planned	Actual
Instrument	ACIS	ACIS
Detector	ACIS-012367	ACIS-012367
Grating	NONE	NONE
Data mode	FAINT	FAINT
Observation mode	SECONDARY	SECONDARY
Pointing RA	0	29.07350053677354
Pointing Dec	0	29.41687560056005
Pointing Roll	0.0	110.974154504456
SIM focus pos (mm)	-0.782348	-1.523540733526241
SIM defocus (mm)	0	0.009795905878055677
SIM translation stage pos (mm)	-233.592463	250.4635187648994
SIM translation stage offset (mm)	0	-0.007540371344731511
Observation start time	175902476.208004	175902475.18329
Observation start date	2003-07-29T21:47:56	2003-07-29T21:47:55
Observation end time	175925903.609003	175925902.58428
Observation end date	2003-07-30T04:18:24	2003-07-30T04:18:22
Read mode	TIMED	TIMED

Parameter	Planned	Actual
Obspar format version number	6	6
Obspar file type	PREDICTED	ACTUAL
Obspar update status	NONE	UPDATED
On-chip summing requested	N	N
Subarray requested	NONE	NONE
Alternating exposures requested	N	N
Primary exposure time	0.000000	3.2

2.3 Aspect

2.4 Star Slots

2.5 FID Slots

A Summary

A.1 Status

V&V Scientist	Jen Lauer
V&V Date (YYYY-MM-DD)	2006.07.13
V&V Edition	1
V&V Disposition and Status	OK
V&V Charge Time	11.8106714

A.2 Comments