

V&V Reference Report

L2 ASCDS Version : 7.6.8

Observation 60601 - L2 Version 001
Chandra X-Ray Center

L2 Processing Date : Jul 12 2006

Contents

1	Front	2
2	OBI	3
2.1	OBI	3
2.1.1	Images	3
2.1.2	Bias	3
2.1.3	Parameters	4
2.1.4	Events	4
2.2	Compared Parameters	5
2.3	Aspect	6
2.4	Star Slots	8
2.5	FID Slots	8
A	Summary	9
A.1	Status	9
A.2	Comments	9

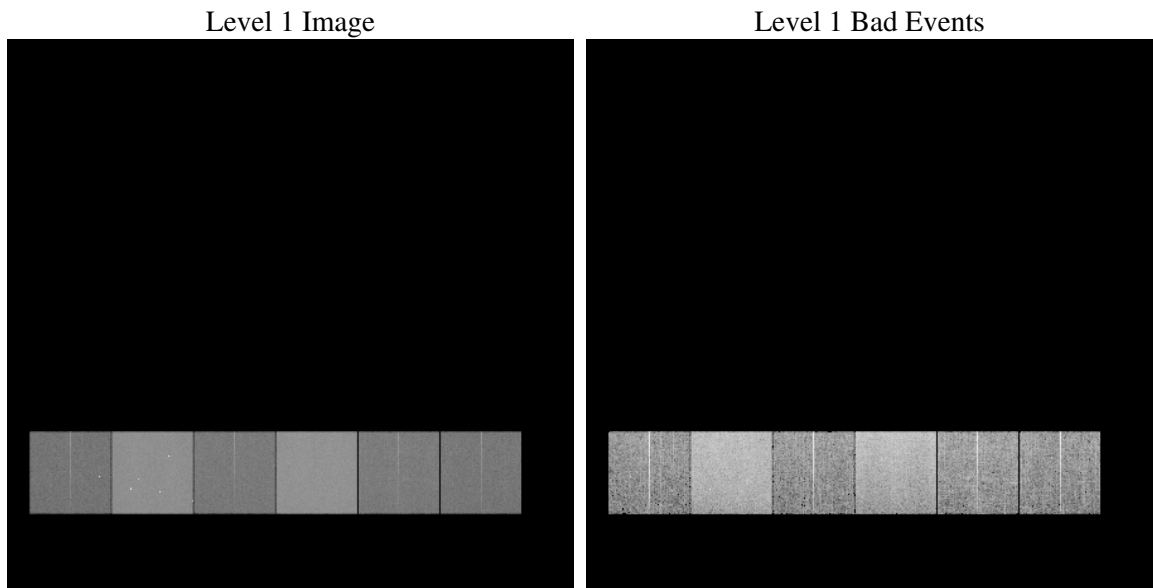
1 Front

seq_num	
obs_id	60601
title	ACIS-456789 diagnostics
observer	CHANDRA engineering request/realtime commanding
object	
dtcycle	0
cycle	P
ra_targ	0.0
dec_targ	0.0
ra_nom	220.59428634004
dec_nom	-10.89878833988
roll_nom	252.42297681665
revision	2
ontime	12201.039183378
livetime	12046.542278655
ontime4	5660.8758379221
ontime5	12201.080223382
ontime6	6156.7076597512
ontime7	12201.039183378
ontime8	6318.8399462998
ontime9	5923.2327885628
l2events	1771831

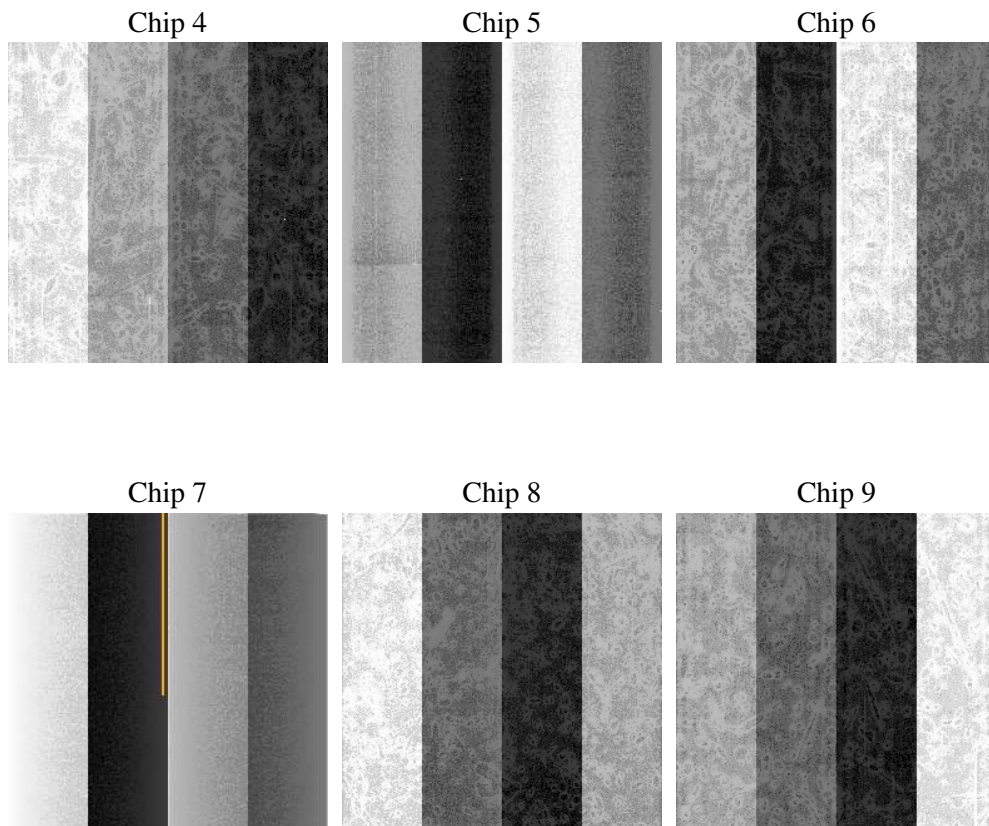
2 OBI

2.1 OBI

2.1.1 Images



2.1.2 Bias



2.1.3 Parameters

obi_num	0
ascdsver	7.6.8
caldbver	3.2.2
date	2006-07-13T02:32:13
revision	2

sched_exp_time	0.0
ontime	12202.366990745
ontime4	5662.080525279
ontime5	12202.366990745
ontime6	6157.9533871114
ontime7	12202.366990745
ontime8	6320.0035936832
ontime9	5924.6016359329
l1events	2207997

2.1.4 Events

	ccd 4	ccd 5	ccd 6	ccd 7	ccd 8	ccd 9
level 1 events	253115	523271	290970	562166	306444	272031
rejected events	40879	89211	41873	81385	48280	41878
rejected %	16%	17%	14%	14%	15%	15%

	ccd 4	ccd 5	ccd 6	ccd 7	ccd 8	ccd 9
grade 0 events	123272	59684	135495	87649	140665	126089
	48%	11%	46%	15%	45%	46%
grade 1 events	972	294	684	217	687	739
	0%	0%	0%	0%	0%	0%
grade 2 events	33596	201772	42624	144728	44851	39439
	13%	38%	14%	25%	14%	14%
grade 3 events	13954	15067	15691	35338	16525	14371
	5%	2%	5%	6%	5%	5%
grade 4 events	14035	14544	15300	35398	16794	14818
	5%	2%	5%	6%	5%	5%
grade 5 events	2569	9463	3055	10418	3489	2984
	1%	1%	1%	1%	1%	1%
grade 6 events	27379	142993	39987	177668	39329	35436
	10%	27%	13%	31%	12%	13%
grade 7 events	37338	79454	38134	70750	44104	38155
	14%	15%	13%	12%	14%	14%

2.2 Compared Parameters

Parameter	Planned	Actual	Parameter	Planned	Actual
Instrument	ACIS	ACIS	Obspar format version number	6	6
Detector	ACIS-456789	ACIS-456789	Obspar file type	PREDICTED	ACTUAL
Grating	NONE	NONE	Obspar update status	NONE	UPDATED
Data mode	FAINT	FAINT	On-chip summing requested	N	N
Observation mode	SECONDARY	SECONDARY	Subarray requested	NONE	NONE
Pointing RA	0	220.594286340038	Alternating exposures requested	N	N
Pointing Dec	0	-10.89878833987992	Primary exposure time	0.000000	3.2
Pointing Roll	0.0	252.4229768166514			
SIM focus pos (mm)	-0.684267	-0.6828225247311905			
SIM defocus (mm)	0	0.8505141146731063			
SIM translation stage pos (mm)	-190.132523	250.466033080201			
SIM translation stage offset (mm)	0	-0.01005468664627074			
Observation start time	176359322.827473	176359321.80277			
Observation start date	2003-08-04T04:42:03	2003-08-04T04:42:01			
Observation end time	176386438.178629	176386437.15393			
Observation end date	2003-08-04T12:13:58	2003-08-04T12:13:57			
Read mode	TIMED	TIMED			

2.3 Aspect

2.4 Star Slots

2.5 FID Slots

A Summary

A.1 Status

V&V Scientist	Jen Lauer
V&V Date (YYYY-MM-DD)	2006.07.13
V&V Edition	1
V&V Disposition and Status	OK
V&V Charge Time	12.2010391

A.2 Comments