

# V&V Reference Report

## L2 ASCDS Version : 7.6.8

Observation 60596 - L2 Version 001  
Chandra X-Ray Center

L2 Processing Date : Jul 11 2006

## Contents

<b>1</b>	<b>Front</b>	<b>2</b>
<b>2</b>	<b>OBI</b>	<b>3</b>
2.1	OBI . . . . .	3
2.1.1	Images . . . . .	3
2.1.2	Bias . . . . .	3
2.1.3	Parameters . . . . .	4
2.1.4	Events . . . . .	4
2.2	Compared Parameters . . . . .	5
2.3	Aspect . . . . .	6
2.4	Star Slots . . . . .	8
2.5	FID Slots . . . . .	8
<b>A</b>	<b>Summary</b>	<b>9</b>
A.1	Status . . . . .	9
A.2	Comments . . . . .	9

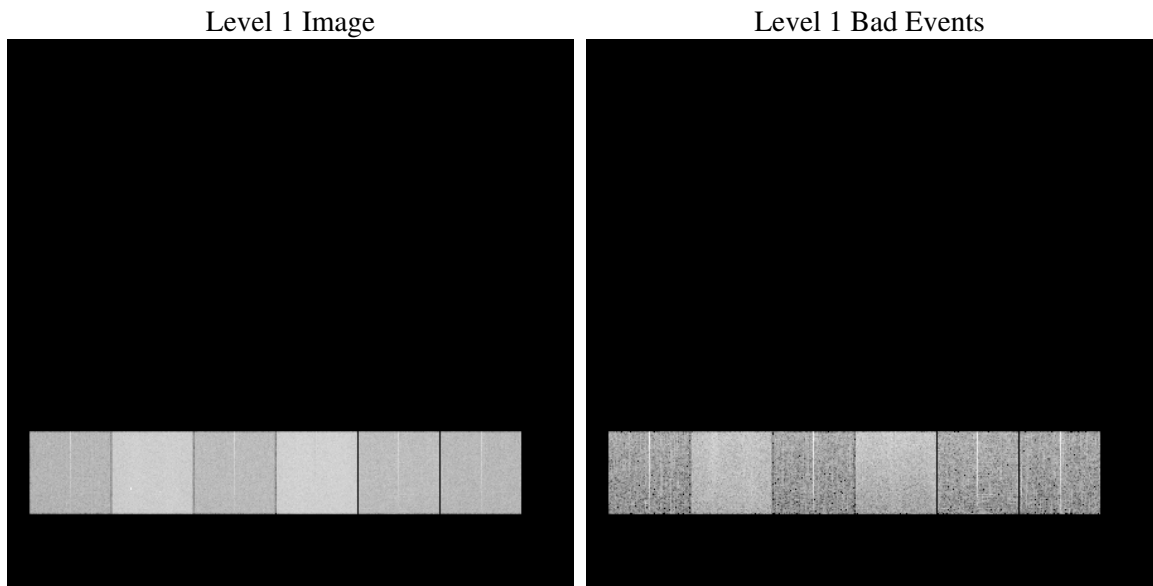
# 1 Front

seq_num	&#160
obs_id	60596
title	ACIS-456789 diagnostics
observer	CHANDRA engineering request/realtime commanding
object	&#160
dtcycle	0
cycle	P
ra_targ	0.0
dec_targ	0.0
ra_nom	150.07628891286
dec_nom	69.008429897752
roll_nom	344.20820745413
revision	2
ontime	8364.7999688387
livetime	8258.8798349554
ontime4	4170.9863398373
ontime5	8364.7999688387
ontime6	4643.721980989
ontime7	8364.7999688387
ontime8	4744.6434319913
ontime9	4416.7288714945
l2events	1206708

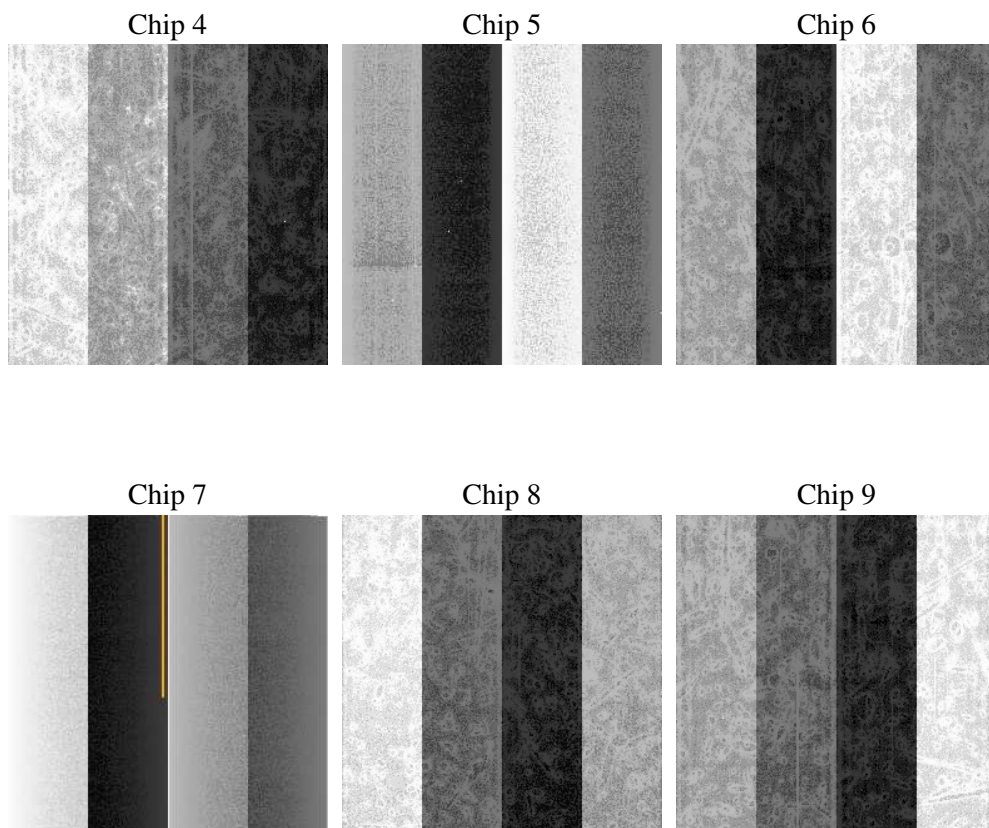
## 2 OBI

### 2.1 OBI

#### 2.1.1 Images



#### 2.1.2 Bias



### 2.1.3 Parameters

obi_num	0
ascdsver	7.6.8
caldsver	3.2.2
date	2006-07-11T11:23:12
revision	2

sched_exp_time	0.0
ontime	8459.0041611493
ontime4	4223.0580386221
ontime5	8462.245151341
ontime6	4699.4852867424
ontime7	8459.0041611493
ontime8	4790.2330607772
ontime9	4469.3742074072
l1events	1536593

### 2.1.4 Events

	ccd 4	ccd 5	ccd 6	ccd 7	ccd 8	ccd 9
level 1 events	182140	345496	213141	375855	222864	197097
rejected events	33705	68084	33945	62334	37317	33856
rejected %	18%	19%	15%	16%	16%	17%

	ccd 4	ccd 5	ccd 6	ccd 7	ccd 8	ccd 9
grade 0 events	88369	27385	98588	53224	103238	92012
	48%	7%	46%	14%	46%	46%
grade 1 events	647	109	429	117	494	483
	0%	0%	0%	0%	0%	0%
grade 2 events	22659	134873	31747	98841	32519	27712
	12%	39%	14%	26%	14%	14%
grade 3 events	9983	8556	10998	21759	11946	10346
	5%	2%	5%	5%	5%	5%
grade 4 events	10086	8135	10993	21875	11736	10387
	5%	2%	5%	5%	5%	5%
grade 5 events	1959	6373	2169	7215	2678	2241
	1%	1%	1%	1%	1%	1%
grade 6 events	19225	101714	28983	121244	27852	24688
	10%	29%	13%	32%	12%	12%
grade 7 events	29212	58351	29234	51580	32401	29228
	16%	16%	13%	13%	14%	14%

## 2.2 Compared Parameters

Parameter	Planned	Actual	Parameter	Planned	Actual
Instrument	ACIS	ACIS	Obspar format version number	6	6
Detector	ACIS-456789	ACIS-456789	Obspar file type	PREDICTED	ACTUAL
Grating	NONE	NONE	Obspar update status	NONE	UPDATED
Data mode	FAINT	FAINT	On-chip summing requested	N	N
Observation mode	SECONDARY	SECONDARY	Subarray requested	NONE	NONE
Pointing RA	0	150.076288912862	Alternating exposures requested	N	N
Pointing Dec	0	69.00842989775241	Primary exposure time	0.000000	3.2
Pointing Roll	0.0	344.208207454135			
SIM focus pos (mm)	-0.684267	-0.6828225247311905			
SIM defocus (mm)	0	0.8505141146731063			
SIM translation stage pos (mm)	-190.132523	250.466033080201			
SIM translation stage offset (mm)	0	-0.01005468664627074			
Observation start time	176630580.889051	176630579.86435			
Observation start date	2003-08-07T08:03:01	2003-08-07T08:02:59			
Observation end time	176653477.340027	176653476.31533			
Observation end date	2003-08-07T14:24:37	2003-08-07T14:24:36			
Read mode	TIMED	TIMED			

## 2.3 Aspect



## 2.4 Star Slots

## 2.5 FID Slots



# A Summary

## A.1 Status

V&V Scientist	Jen Lauer
V&V Date (YYYY-MM-DD)	2006.07.11
V&V Edition	1
V&V Disposition and Status	OK
V&V Charge Time	8.36479996

## A.2 Comments

The ACIS focal plane temperature was above calibration limits for the entire observation, and dropped two degrees during the obsid.