

V&V Reference Report

L2 ASCDS Version : 7.6.8

Observation 60556 - L2 Version 001
Chandra X-Ray Center

L2 Processing Date : Jul 5 2006

Contents

1	Front	2
2	OBI	3
2.1	OBI	3
2.1.1	Images	3
2.1.2	Bias	3
2.1.3	Parameters	4
2.1.4	Events	4
2.2	Compared Parameters	5
2.3	Aspect	6
2.4	Star Slots	8
2.5	FID Slots	8
A	Summary	9
A.1	Status	9
A.2	Comments	9

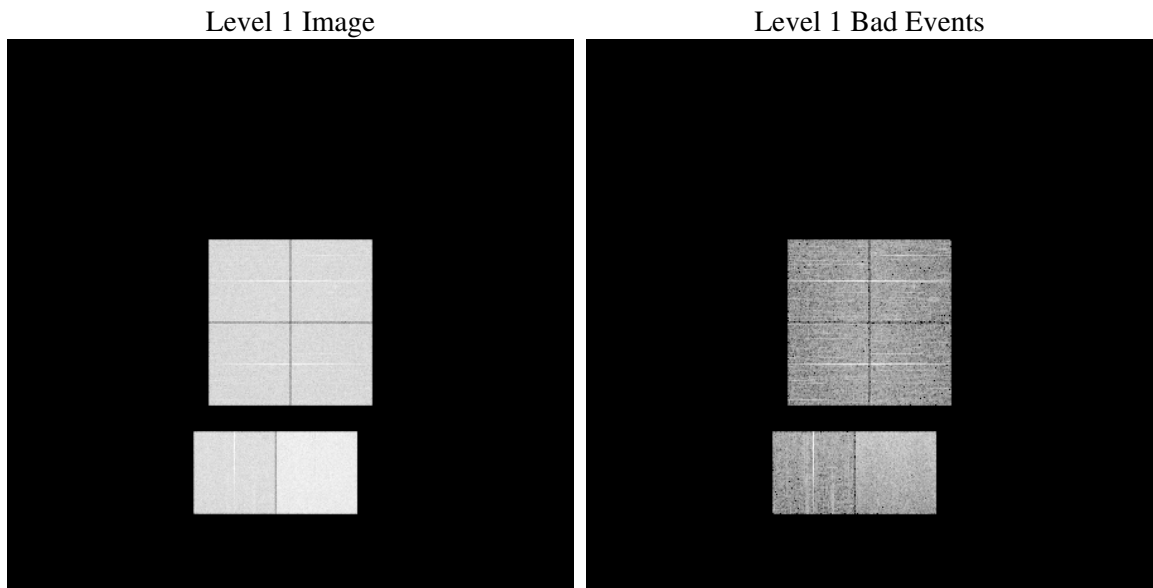
1 Front

seq_num	
obs_id	60556
title	ACIS-012367 diagnostics
observer	CHANDRA engineering request/realtime commanding
object	
dtcycle	0
cycle	P
ra_targ	0.0
dec_targ	0.0
ra_nom	300.04148896201
dec_nom	-52.012841833752
roll_nom	300.44875618258
revision	2
ontime	8380.7999687791
livetime	8274.6772332625
ontime0	5265.5223051906
ontime1	5399.1061059237
ontime2	5032.2525730133
ontime3	5159.2742578983
ontime6	5528.1636882126
ontime7	8380.7999687791
l2events	1234192

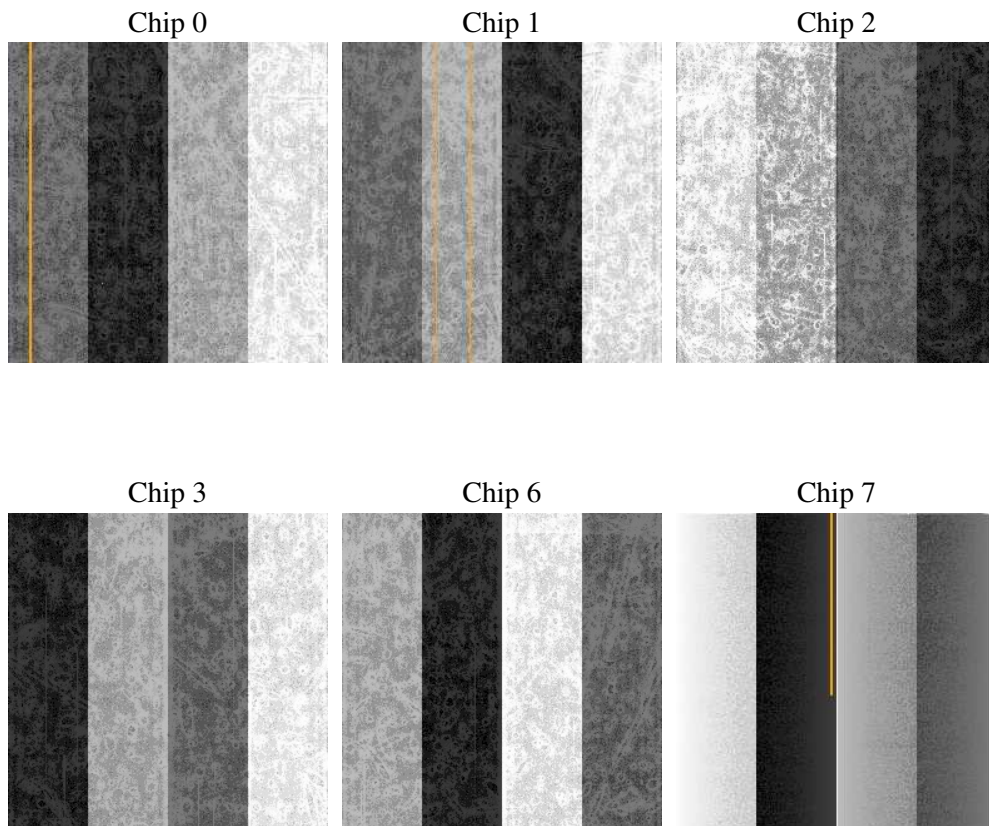
2 OBI

2.1 OBI

2.1.1 Images



2.1.2 Bias



2.1.3 Parameters

obi_num	0
ascdsver	7.6.8
caldbver	3.2.2
date	2006-07-05T09:49:17
revision	2

sched_exp_time	0.0
ontime	8462.2585627437
ontime0	5315.2760035396
ontime1	5451.3959574699
ontime2	5078.6831214726
ontime3	5208.323099345
ontime6	5577.7941470444
ontime7	8462.2585627437
l1events	1538165

2.1.4 Events

	ccd 0	ccd 1	ccd 2	ccd 3	ccd 6	ccd 7
level 1 events	229304	235276	222531	227067	251734	372253
rejected events	35832	36919	36261	36016	39516	61066
rejected %	15%	15%	16%	15%	15%	16%

	ccd 0	ccd 1	ccd 2	ccd 3	ccd 6	ccd 7
grade 0 events	107794	109840	105687	108642	116014	54184
	47%	46%	47%	47%	46%	14%
grade 1 events	592	514	632	621	515	120
	0%	0%	0%	0%	0%	0%
grade 2 events	33906	35503	31233	32462	37031	96567
	14%	15%	14%	14%	14%	25%
grade 3 events	12407	12734	12248	12379	13040	22681
	5%	5%	5%	5%	5%	6%
grade 4 events	12625	12426	12253	12513	13205	21675
	5%	5%	5%	5%	5%	5%
grade 5 events	2207	2413	2196	2340	2601	7175
	0%	1%	0%	1%	1%	1%
grade 6 events	28545	29710	26526	26886	34741	119067
	12%	12%	11%	11%	13%	31%
grade 7 events	31228	32136	31756	31224	34587	50784
	13%	13%	14%	13%	13%	13%

2.2 Compared Parameters

Parameter	Planned	Actual	Parameter	Planned	Actual
Instrument	ACIS	ACIS	Obspar format version number	6	6
Detector	ACIS-012367	ACIS-012367	Obspar file type	PREDICTED	ACTUAL
Grating	NONE	NONE	Obspar update status	NONE	UPDATED
Data mode	FAINT	FAINT	On-chip summing requested	N	N
Observation mode	SECONDARY	SECONDARY	Subarray requested	NONE	NONE
Pointing RA	0	300.0414889620087	Alternating exposures requested	N	N
Pointing Dec	0	-52.01284183375194	Primary exposure time	0.000000	3.2
Pointing Roll	0.0	300.4487561825814			
SIM focus pos (mm)	-0.782348	-0.6828225247311905			
SIM defocus (mm)	0	0.8505141146731063			
SIM translation stage pos (mm)	-233.592463	250.466033080201			
SIM translation stage offset (mm)	0	-0.01005468664627074			
Observation start time	179829255.475955	179829254.45123			
Observation start date	2003-09-13T08:34:15	2003-09-13T08:34:14			
Observation end time	179850565.226869	179850564.20215			
Observation end date	2003-09-13T14:29:25	2003-09-13T14:29:24			
Read mode	TIMED	TIMED			

2.3 Aspect

2.4 Star Slots

2.5 FID Slots

A Summary

A.1 Status

V&V Scientist	Beth Sundheim
V&V Date (YYYY-MM-DD)	2006.07.05
V&V Edition	1
V&V Disposition and Status	OK
V&V Charge Time	8.38079996

A.2 Comments