

# V&V Reference Report

## L2 ASCDS Version : 7.6.8

Observation 60555 - L2 Version 001  
Chandra X-Ray Center

L2 Processing Date : Jul 5 2006

## Contents

<b>1</b>	<b>Front</b>	<b>2</b>
<b>2</b>	<b>OBI</b>	<b>3</b>
2.1	OBI . . . . .	3
2.1.1	Images . . . . .	3
2.1.2	Bias . . . . .	3
2.1.3	Parameters . . . . .	4
2.1.4	Events . . . . .	4
2.2	Compared Parameters . . . . .	5
2.3	Aspect . . . . .	6
2.4	Star Slots . . . . .	8
2.5	FID Slots . . . . .	8
<b>A</b>	<b>Summary</b>	<b>9</b>
A.1	Status . . . . .	9
A.2	Comments . . . . .	9

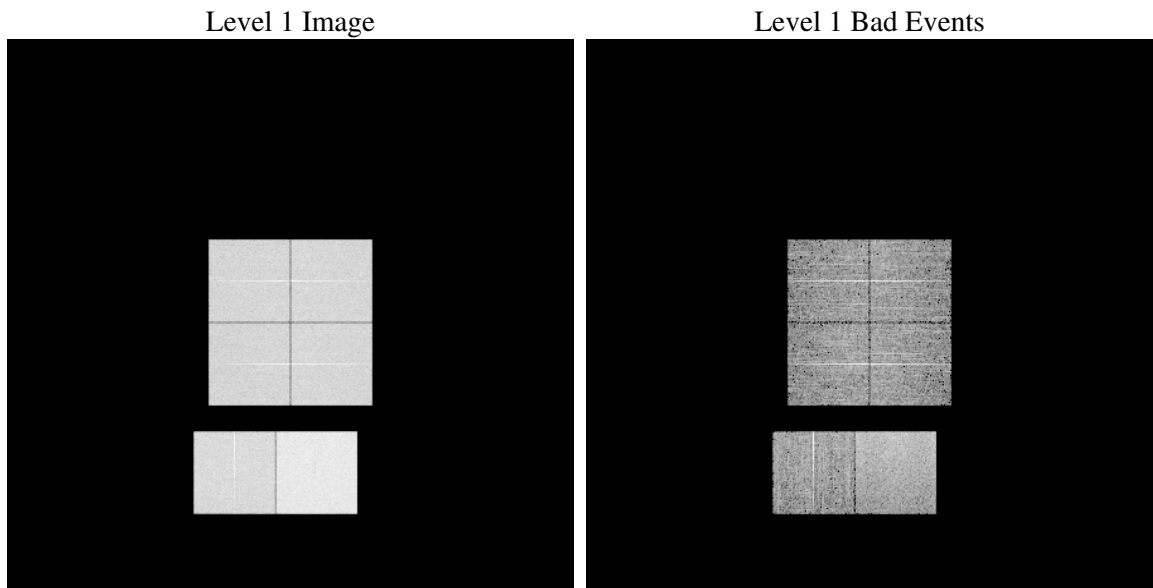
# 1 Front

seq_num	&#160
obs_id	60555
title	ACIS-012367 diagnostics
observer	CHANDRA engineering request/realtime commanding
object	&#160
dtcycle	0
cycle	P
ra_targ	0.0
dec_targ	0.0
ra_nom	217.0448559131
dec_nom	52.990599985134
roll_nom	307.90091813245
revision	2
ontime	7804.7999709249
livetime	7705.9708942067
ontime0	4943.9265100658
ontime1	5080.0891467929
ontime2	4756.0333922505
ontime3	4924.4000028968
ontime6	5280.0897502601
ontime7	7804.7999709249
l2events	1152752

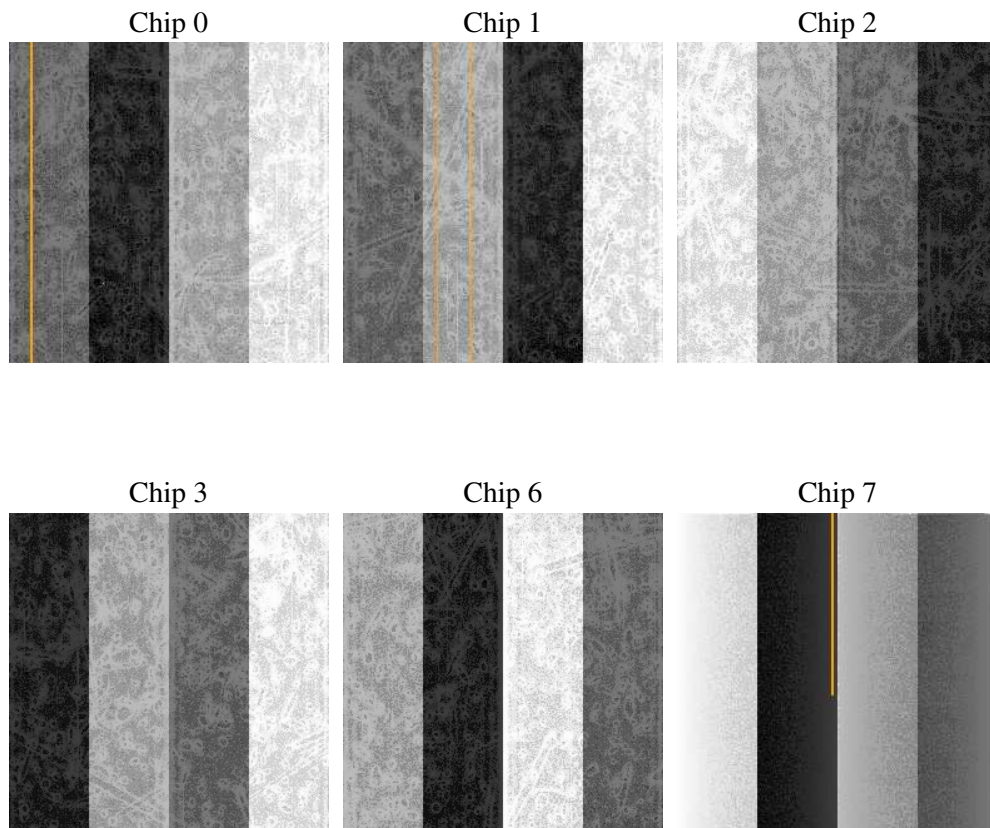
## 2 OBI

### 2.1 OBI

#### 2.1.1 Images



#### 2.1.2 Bias



### 2.1.3 Parameters

obi_num	0
ascdsver	7.6.8
caldbver	3.2.2
date	2006-07-05T10:54:36
revision	2

sched_exp_time	0.0
ontime	7807.5675446689
ontime0	4945.7945753336
ontime1	5081.9161720574
ontime2	4757.8193775117
ontime3	4926.3501481712
ontime6	5282.8573240042
ontime7	7807.5675446689
l1events	1421333

### 2.1.4 Events

	ccd 0	ccd 1	ccd 2	ccd 3	ccd 6	ccd 7
level 1 events	209118	214828	205387	213828	236454	341718
rejected events	30917	31850	32057	32130	35658	51339
rejected %	14%	14%	15%	15%	15%	15%

	ccd 0	ccd 1	ccd 2	ccd 3	ccd 6	ccd 7
grade 0 events	98399	100676	97194	102034	109574	53260
	47%	46%	47%	47%	46%	15%
grade 1 events	540	504	561	553	530	127
	0%	0%	0%	0%	0%	0%
grade 2 events	30915	32416	29513	31431	34736	86791
	14%	15%	14%	14%	14%	25%
grade 3 events	11563	11507	11351	11799	12562	21806
	5%	5%	5%	5%	5%	6%
grade 4 events	11517	11742	11151	11863	12586	21392
	5%	5%	5%	5%	5%	6%
grade 5 events	2114	2242	2041	2281	2484	6623
	1%	1%	0%	1%	1%	1%
grade 6 events	25936	26754	24236	24696	31475	107258
	12%	12%	11%	11%	13%	31%
grade 7 events	28134	28987	29340	29171	32507	44461
	13%	13%	14%	13%	13%	13%

## 2.2 Compared Parameters

Parameter	Planned	Actual	Parameter	Planned	Actual
Instrument	ACIS	ACIS	Obspar format version number	6	6
Detector	ACIS-012367	ACIS-012367	Obspar file type	PREDICTED	ACTUAL
Grating	NONE	NONE	Obspar update status	NONE	UPDATED
Data mode	FAINT	FAINT	On-chip summing requested	N	N
Observation mode	SECONDARY	SECONDARY	Subarray requested	NONE	NONE
Pointing RA	0	217.0448559131	Alternating exposures requested	N	N
Pointing Dec	0	52.9905999851343	Primary exposure time	0.000000	3.2
Pointing Roll	0.0	307.9009181324499			
SIM focus pos (mm)	-0.782348	-0.6828225247311905			
SIM defocus (mm)	0	0.8505141146731063			
SIM translation stage pos (mm)	-233.592463	250.466033080201			
SIM translation stage offset (mm)	0	-0.01005468664627074			
Observation start time	180022613.534251	180022612.50952			
Observation start date	2003-09-15T14:16:54	2003-09-15T14:16:52			
Observation end time	180037406.334886	180037405.31016			
Observation end date	2003-09-15T18:23:26	2003-09-15T18:23:25			
Read mode	TIMED	TIMED			

## 2.3 Aspect



## **2.4 Star Slots**

## **2.5 FID Slots**



## A Summary

### A.1 Status

V&V Scientist	Beth Sundheim
V&V Date (YYYY-MM-DD)	2006.07.05
V&V Edition	1
V&V Disposition and Status	OK
V&V Charge Time	7.80479997

### A.2 Comments