

# V&V Reference Report

## L2 ASCDS Version : 7.6.8

Observation 60544 - L2 Version 001  
Chandra X-Ray Center

L2 Processing Date : Jul 4 2006

## Contents

<b>1</b>	<b>Front</b>	<b>2</b>
<b>2</b>	<b>OBI</b>	<b>3</b>
2.1	OBI . . . . .	3
2.1.1	Images . . . . .	3
2.1.2	Bias . . . . .	3
2.1.3	Parameters . . . . .	4
2.1.4	Events . . . . .	4
2.2	Compared Parameters . . . . .	5
2.3	Aspect . . . . .	6
2.4	Star Slots . . . . .	8
2.5	FID Slots . . . . .	8
<b>A</b>	<b>Summary</b>	<b>9</b>
A.1	Status . . . . .	9
A.2	Comments . . . . .	9

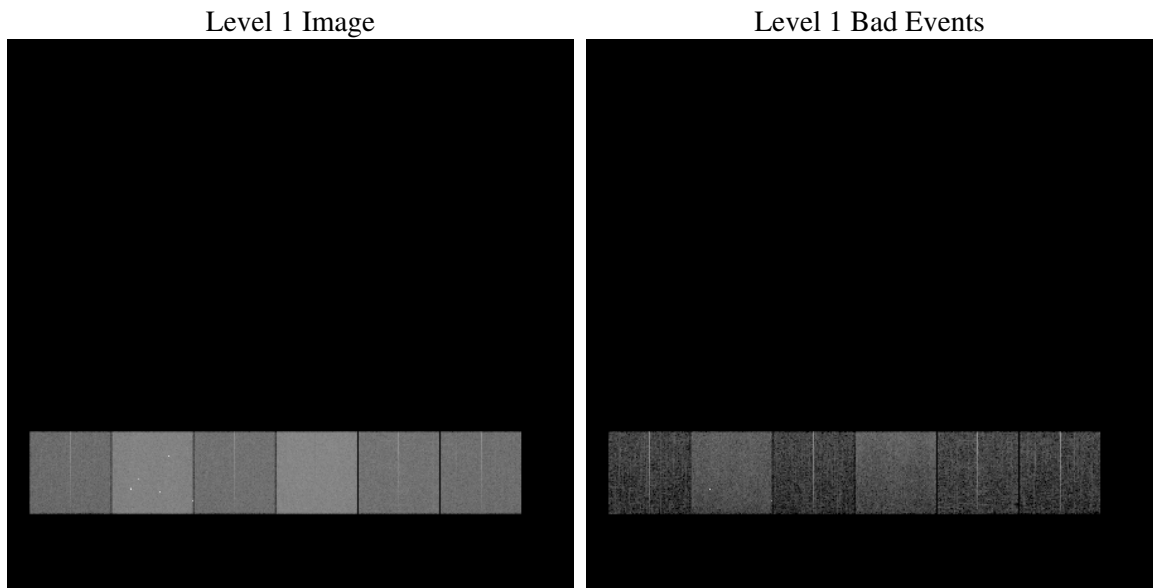
# 1 Front

seq_num	&#160
obs_id	60544
title	ACIS-456789 diagnostics
observer	CHANDRA engineering request/realtime commanding
object	&#160
dtcycle	0
cycle	P
ra_targ	0.0
dec_targ	0.0
ra_nom	343.60035699197
dec_nom	11.171412281099
roll_nom	237.84499477374
revision	2
ontime	8434.4503234327
livetime	8327.6482348211
ontime4	4289.3620500267
ontime5	8444.2143638432
ontime6	4697.6861629784
ontime7	8434.4503234327
ontime8	4791.7572684884
ontime9	4587.369276762
l2events	1207587

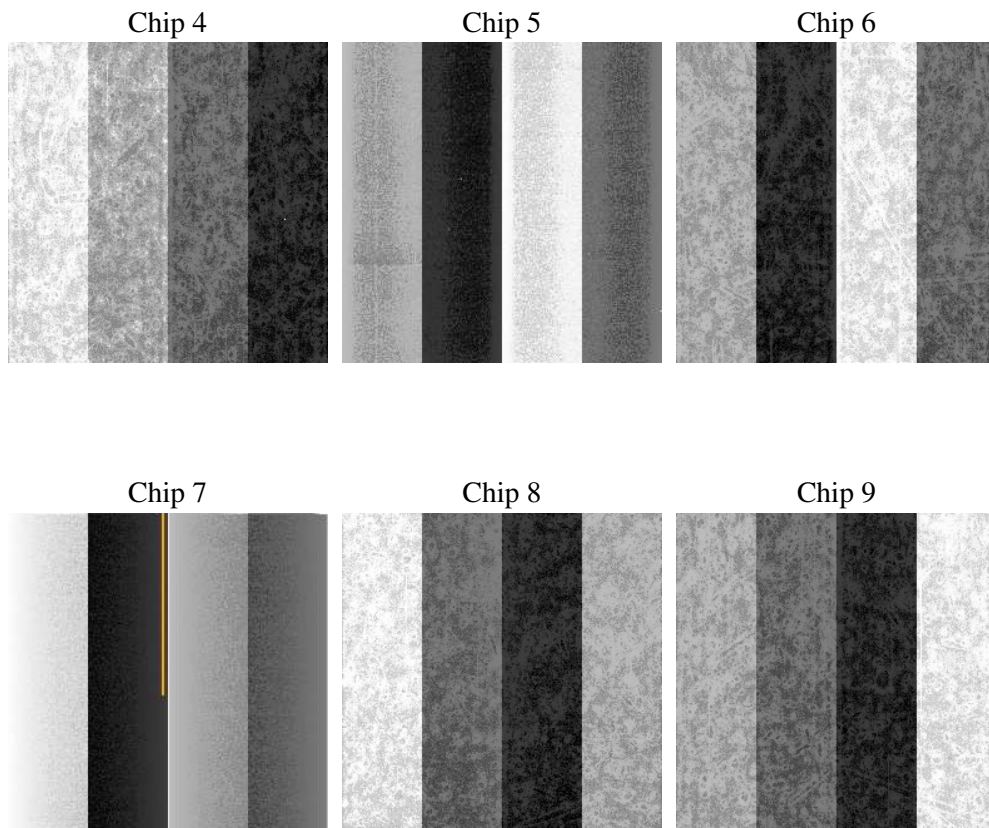
## 2 OBI

### 2.1 OBI

#### 2.1.1 Images



#### 2.1.2 Bias



### 2.1.3 Parameters

obi_num	0
ascdsver	7.6.8
caldsver	3.2.2
date	2006-07-04T14:22:30
revision	2

sched_exp_time	0.0
ontime	8436.3338712752
ontime4	4291.1224778593
ontime5	8446.0568716824
ontime6	4699.4876308143
ontime7	8436.3338712752
ontime8	4793.4766563475
ontime9	4589.2938646078
l1events	1533639

### 2.1.4 Events

	ccd 4	ccd 5	ccd 6	ccd 7	ccd 8	ccd 9
level 1 events	183323	347014	210448	370928	221307	200619
rejected events	32716	65443	32417	59570	37658	33403
rejected %	17%	18%	15%	16%	17%	16%

	ccd 4	ccd 5	ccd 6	ccd 7	ccd 8	ccd 9
grade 0 events	87834	34688	97322	54529	100698	92434
	47%	9%	46%	14%	45%	46%
grade 1 events	605	237	497	154	479	504
	0%	0%	0%	0%	0%	0%
grade 2 events	23951	133066	30626	94996	32114	28672
	13%	38%	14%	25%	14%	14%
grade 3 events	9975	9023	10883	22516	12051	10744
	5%	2%	5%	6%	5%	5%
grade 4 events	9823	8671	11017	22074	11994	10650
	5%	2%	5%	5%	5%	5%
grade 5 events	2026	7125	2379	7323	2749	2356
	1%	2%	1%	1%	1%	1%
grade 6 events	19152	96240	28302	118015	27145	24904
	10%	27%	13%	31%	12%	12%
grade 7 events	29957	57964	29422	51321	34077	30355
	16%	16%	13%	13%	15%	15%

## 2.2 Compared Parameters

Parameter	Planned	Actual	Parameter	Planned	Actual
Instrument	ACIS	ACIS	Obspar format version number	6	6
Detector	ACIS-456789	ACIS-456789	Obspar file type	PREDICTED	ACTUAL
Grating	NONE	NONE	Obspar update status	NONE	UPDATED
Data mode	FAINT	FAINT	On-chip summing requested	N	N
Observation mode	SECONDARY	SECONDARY	Subarray requested	NONE	NONE
Pointing RA	0	343.6003569919652	Alternating exposures requested	N	N
Pointing Dec	0	11.17141228109852	Primary exposure time	0.000000	3.2
Pointing Roll	0.0	237.8449947737406			
SIM focus pos (mm)	-0.684267	-1.038866356238299			
SIM defocus (mm)	0	0.4944702831659975			
SIM translation stage pos (mm)	-190.132523	250.466033080201			
SIM translation stage offset (mm)	0	-0.01005468664627074			
Observation start time	180744270.965203	180744269.94048			
Observation start date	2003-09-23T22:44:31	2003-09-23T22:44:29			
Observation end time	180767780.366212	180767779.34149			
Observation end date	2003-09-24T05:16:20	2003-09-24T05:16:19			
Read mode	TIMED	TIMED			

## 2.3 Aspect



## **2.4 Star Slots**

## **2.5 FID Slots**



## A Summary

### A.1 Status

V&V Scientist	Beth Sundheim
V&V Date (YYYY-MM-DD)	2006.07.05
V&V Edition	1
V&V Disposition and Status	OK
V&V Charge Time	8.43445032

### A.2 Comments