

V&V Reference Report

L2 ASCDS Version : 7.6.8

Observation 60487 - L2 Version 001
Chandra X-Ray Center

L2 Processing Date : Jun 30 2006

Contents

1	Front	2
2	OBI	3
2.1	OBI	3
2.1.1	Images	3
2.1.2	Bias	3
2.1.3	Parameters	4
2.1.4	Events	4
2.2	Compared Parameters	5
2.3	Aspect	6
2.4	Star Slots	8
2.5	FID Slots	8
A	Summary	9
A.1	Status	9
A.2	Comments	9

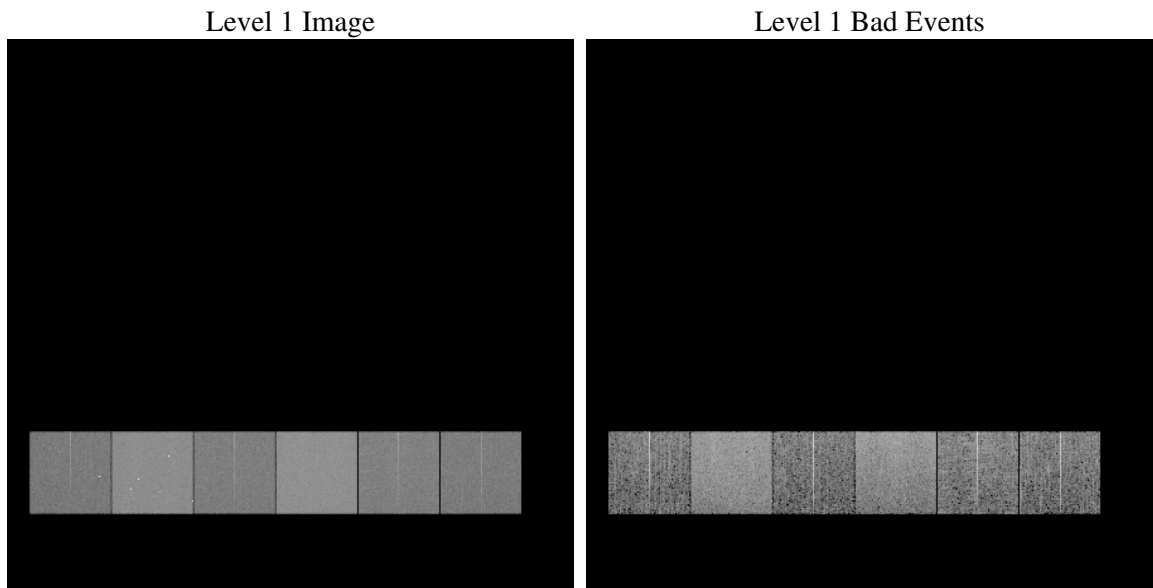
1 Front

seq_num	
obs_id	60487
title	ACIS-456789 diagnostics
observer	CHANDRA engineering request/realtime commanding
object	
dtcycle	0
cycle	P
ra_targ	0.0
dec_targ	0.0
ra_nom	0.023833517418937
dec_nom	-0.015817906202944
roll_nom	293.49604201944
revision	2
ontime	8463.9999684691
livetime	8356.8237044595
ontime4	4756.3182087839
ontime5	8463.9999684691
ontime6	5122.5500034392
ontime7	8463.9999684691
ontime8	5248.9488911033
ontime9	4947.5371494591
l2events	1225505

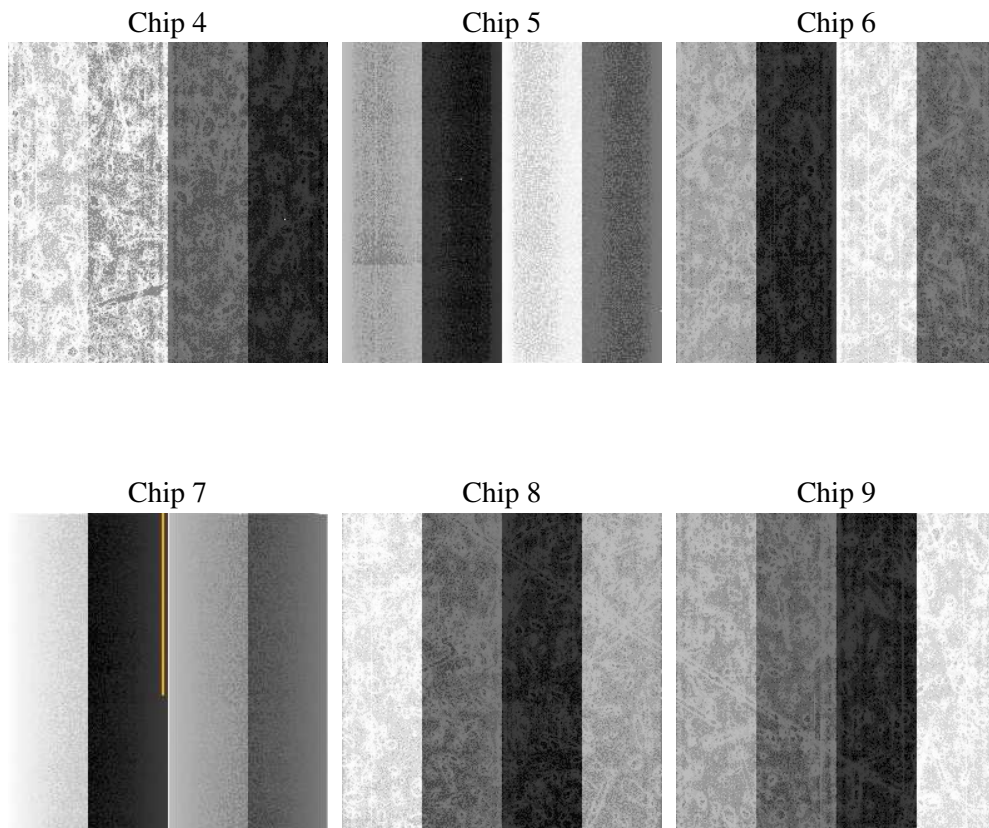
2 OBI

2.1 OBI

2.1.1 Images



2.1.2 Bias



2.1.3 Parameters

obi_num	1
ascdsver	7.6.8
caldbver	3.2.2
date	2006-06-30T15:50:35
revision	2

sched_exp_time	0.0
ontime	8465.5077567995
ontime4	4757.8259971142
ontime5	8465.5077567995
ontime6	5124.0577917695
ontime7	8465.5077567995
ontime8	5250.4566794336
ontime9	4949.0449377894
l1events	1535592

2.1.4 Events

	ccd 4	ccd 5	ccd 6	ccd 7	ccd 8	ccd 9
level 1 events	194421	330229	217132	354832	232288	206690
rejected events	31232	59287	29795	52446	36666	32037
rejected %	16%	17%	13%	14%	15%	15%

	ccd 4	ccd 5	ccd 6	ccd 7	ccd 8	ccd 9
grade 0 events	95098	34103	102025	54355	107527	96450
	48%	10%	46%	15%	46%	46%
grade 1 events	612	296	428	129	483	483
	0%	0%	0%	0%	0%	0%
grade 2 events	25894	127688	32266	91016	34153	30044
	13%	38%	14%	25%	14%	14%
grade 3 events	10788	8797	11676	22342	12497	11107
	5%	2%	5%	6%	5%	5%
grade 4 events	10694	8440	11768	22109	12660	11208
	5%	2%	5%	6%	5%	5%
grade 5 events	2011	6357	2210	6684	2637	2279
	1%	1%	1%	1%	1%	1%
grade 6 events	20715	91914	29602	112564	28785	25844
	10%	27%	13%	31%	12%	12%
grade 7 events	28609	52634	27157	45633	33546	29275
	14%	15%	12%	12%	14%	14%

2.2 Compared Parameters

Parameter	Planned	Actual	Parameter	Planned	Actual
Instrument	ACIS	ACIS	Obspar format version number	6	6
Detector	ACIS-456789	ACIS-456789	Obspar file type	PREDICTED	ACTUAL
Grating	NONE	NONE	Obspar update status	NONE	UPDATED
Data mode	FAINT	FAINT	On-chip summing requested	N	N
Observation mode	SECONDARY	SECONDARY	Subarray requested	NONE	NONE
Pointing RA	0	0.02383351741893729	Alternating exposures requested	N	N
Pointing Dec	0	-0.01581790620294396	Primary exposure time	0.000000	3.2
Pointing Roll	0.0	293.4960420194386			
SIM focus pos (mm)	-0.684267	-1.428180813131781			
SIM defocus (mm)	0	0.1051558262725154			
SIM translation stage pos (mm)	-190.132523	250.466033080201			
SIM translation stage offset (mm)	0	-0.01005468664627074			
Observation start time	184855794.192245	184855793.16749			
Observation start date	2003-11-10T12:49:54	2003-11-10T12:49:53			
Observation end time	184877103.943173	184877102.91842			
Observation end date	2003-11-10T18:45:04	2003-11-10T18:45:02			
Read mode	TIMED	TIMED			

2.3 Aspect

2.4 Star Slots

2.5 FID Slots

A Summary

A.1 Status

V&V Scientist	Beth Sundheim
V&V Date (YYYY-MM-DD)	2006.06.30
V&V Edition	1
V&V Disposition and Status	OK
V&V Charge Time	8.46399996

A.2 Comments