

V&V Reference Report

L2 ASCDS Version : 7.6.8

Observation 60455 - L2 Version 001
Chandra X-Ray Center

L2 Processing Date : Jun 23 2006

Contents

1	Front	2
2	OBI	3
2.1	OBI	3
2.1.1	Images	3
2.1.2	Bias	3
2.1.3	Parameters	4
2.1.4	Events	4
2.2	Compared Parameters	5
2.3	Aspect	6
2.4	Star Slots	8
2.5	FID Slots	8
A	Summary	9
A.1	Status	9
A.2	Comments	9

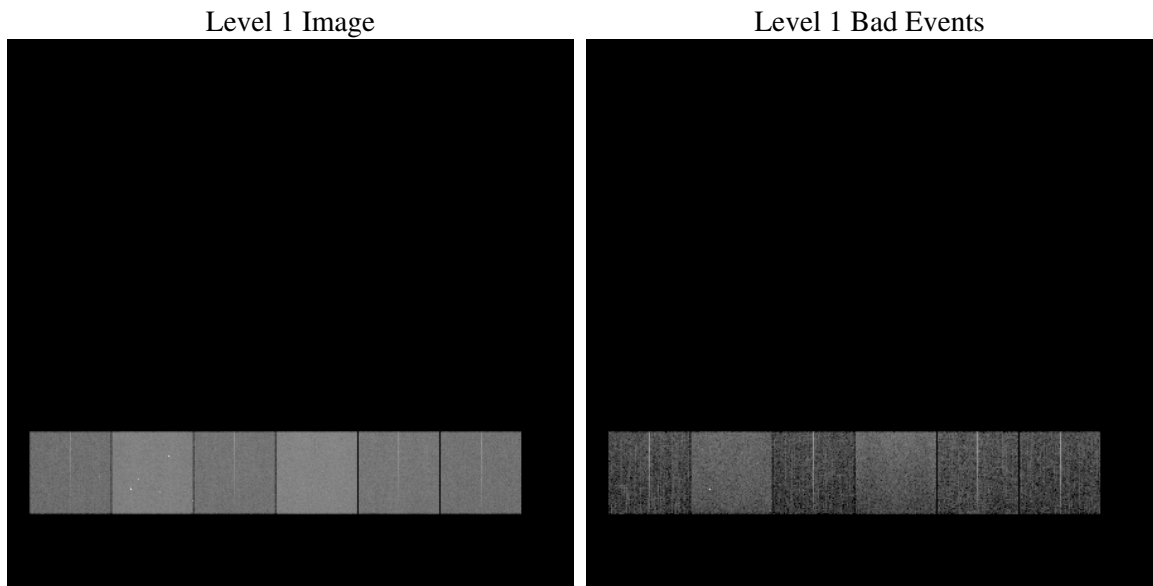
1 Front

seq_num	
obs_id	60455
title	ACIS-456789 diagnostics
observer	CHANDRA engineering request/realtime commanding
object	
dtcycle	0
cycle	P
ra_targ	0.0
dec_targ	0.0
ra_nom	133.19904702239
dec_nom	-6.6714195881967
roll_nom	58.967640233489
revision	2
ontime	8463.4319095016
livetime	8356.2628385966
ontime4	4882.274887085
ontime5	8463.4729495049
ontime6	5352.1764906943
ontime7	8463.4319095016
ontime8	5478.6573478878
ontime9	5212.6914497018
l2events	1219573

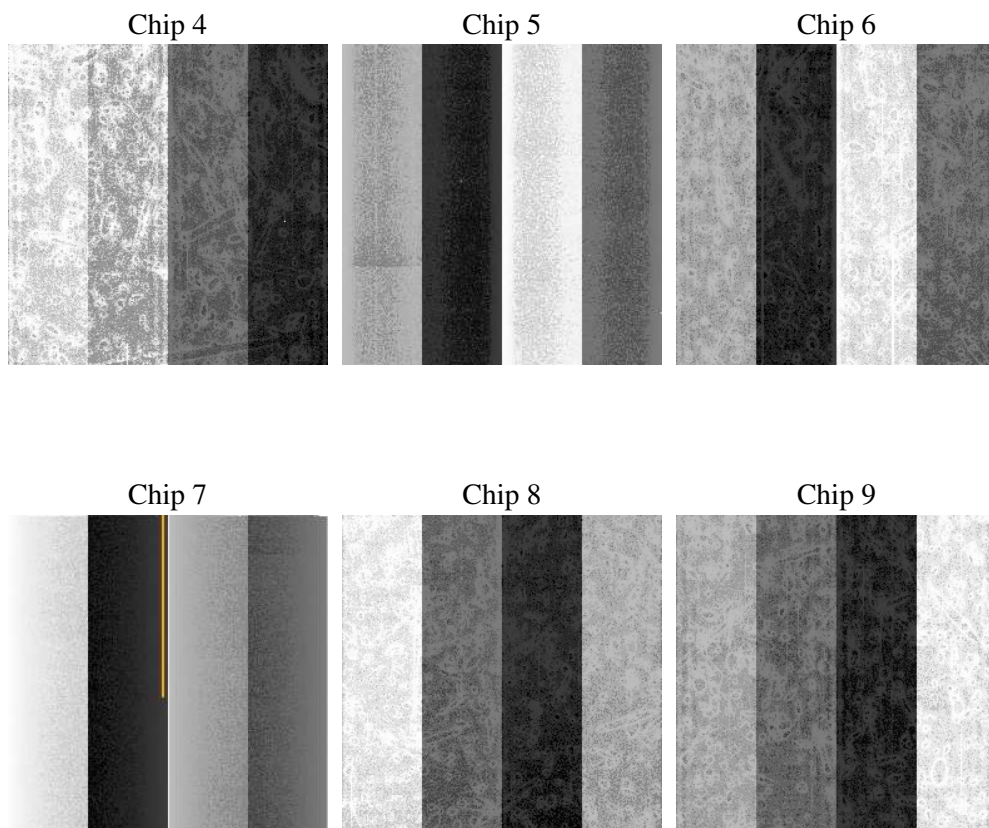
2 OBI

2.1 OBI

2.1.1 Images



2.1.2 Bias



2.1.3 Parameters

obi_num	0
ascdsver	7.6.8
caldsver	3.2.2
date	2006-06-23T23:04:44
revision	2

sched_exp_time	0.0
ontime	8465.5039272606
ontime4	4884.2237848341
ontime5	8465.5039272606
ontime6	5354.1664284468
ontime7	8465.5039272606
ontime8	5480.5652056634
ontime9	5214.8045074642
l1events	1535244

2.1.4 Events

	ccd 4	ccd 5	ccd 6	ccd 7	ccd 8	ccd 9
level 1 events	195295	322223	222914	346781	237345	210686
rejected events	33205	59146	31769	53823	37908	32073
rejected %	17%	18%	14%	15%	15%	15%

	ccd 4	ccd 5	ccd 6	ccd 7	ccd 8	ccd 9
grade 0 events	94502	31240	104901	52071	109638	98999
	48%	9%	47%	15%	46%	46%
grade 1 events	617	115	478	138	488	520
	0%	0%	0%	0%	0%	0%
grade 2 events	25968	126148	32623	89308	34904	30778
	13%	39%	14%	25%	14%	14%
grade 3 events	10708	8183	11906	21302	12771	11336
	5%	2%	5%	6%	5%	5%
grade 4 events	10598	8195	11807	20983	12728	11345
	5%	2%	5%	6%	5%	5%
grade 5 events	2147	6521	2264	6714	2743	2453
	1%	2%	1%	1%	1%	1%
grade 6 events	20437	89415	30034	109408	29522	26273
	10%	27%	13%	31%	12%	12%
grade 7 events	30318	52406	28901	46857	34551	28982
	15%	16%	12%	13%	14%	13%

2.2 Compared Parameters

Parameter	Planned	Actual	Parameter	Planned	Actual
Instrument	ACIS	ACIS	Obspar format version number	6	6
Detector	ACIS-456789	ACIS-456789	Obspar file type	PREDICTED	ACTUAL
Grating	NONE	NONE	Obspar update status	NONE	UPDATED
Data mode	FAINT	FAINT	On-chip summing requested	N	N
Observation mode	SECONDARY	SECONDARY	Subarray requested	NONE	NONE
Pointing RA	0	133.1990470223862	Alternating exposures requested	N	N
Pointing Dec	0	-6.671419588196676	Primary exposure time	0.000000	3.2
Pointing Roll	0.0	58.96764023348864			
SIM focus pos (mm)	-0.684267	-0.6828225247311905			
SIM defocus (mm)	0	0.8505141146731063			
SIM translation stage pos (mm)	-190.132523	250.466033080201			
SIM translation stage offset (mm)	0	-0.01005468664627074			
Observation start time	187594485.660916	187594484.63622			
Observation start date	2003-12-12T05:34:46	2003-12-12T05:34:44			
Observation end time	187617412.86191	187617411.83721			
Observation end date	2003-12-12T11:56:53	2003-12-12T11:56:51			
Read mode	TIMED	TIMED			

2.3 Aspect

2.4 Star Slots

2.5 FID Slots

A Summary

A.1 Status

V&V Scientist	Jen Lauer
V&V Date (YYYY-MM-DD)	2006.06.26
V&V Edition	1
V&V Disposition and Status	OK
V&V Charge Time	8.4634319

A.2 Comments