

# V&V Reference Report

## L2 ASCDS Version : 8.4.5

Observation 60454 - L2 Version 3  
Chandra X-Ray Center

L2 Processing Date : Nov 9 2012

## Contents

<b>1</b>	<b>Front</b>	<b>2</b>
<b>2</b>	<b>OBI</b>	<b>3</b>
2.1	OBI . . . . .	3
2.1.1	Images . . . . .	3
2.1.2	Bias . . . . .	3
2.1.3	Parameters . . . . .	4
2.1.4	Events . . . . .	4
2.2	Compared Parameters . . . . .	5
2.3	Star Slots . . . . .	6
2.4	FID Slots . . . . .	6
<b>A</b>	<b>Summary</b>	<b>7</b>
A.1	Status . . . . .	7
A.2	Comments . . . . .	7

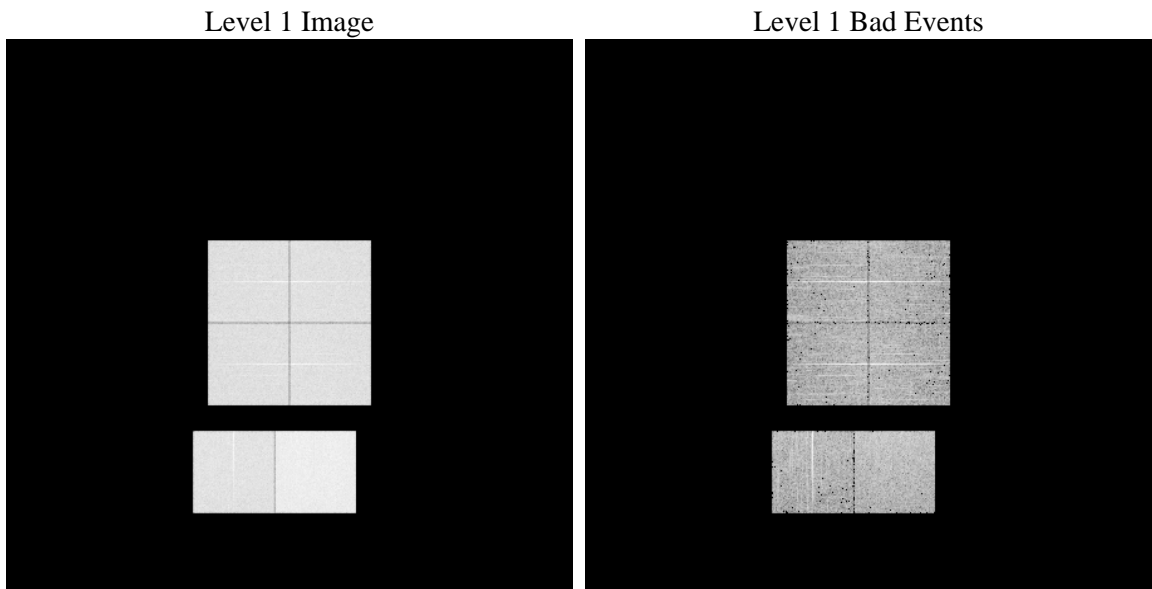
# 1 Front

seq_num	&#160	Sequence number
obs_id	60454	Observation id
title	ACIS-012367 diagnostics	Proposal title
observer	CHANDRA engineering request/realtime commanding	Principal investig
object	&#160	Source name
dtcycle	0	&#160
cycle	P	events from which exps? Prim/Second/Both
ra_targ	0.0	Observer's specified target RA [deg]
dec_targ	0.0	Observer's specified target Dec [deg]
ra_nom	65.38543954452	Nominal RA [deg]
dec_nom	44.973334970211	Nominal Dec [deg]
roll_nom	216.02893977823	Nominal Roll [deg]
revision	3	Processing version of data
ontime	7807.9999709129	Sum of GTIs [s]
livetime	7709.1303738681	Livetime [s]
ontime0	5077.7783191502	Sum of GTIs [s]
ontime1	5149.1209353805	Sum of GTIs [s]
ontime2	4904.0876868367	Sum of GTIs [s]
ontime3	5049.9324645698	Sum of GTIs [s]
ontime6	5351.3423894346	Sum of GTIs [s]
ontime7	7807.9999709129	Sum of GTIs [s]
l2events	1166857	Number of level 2 events

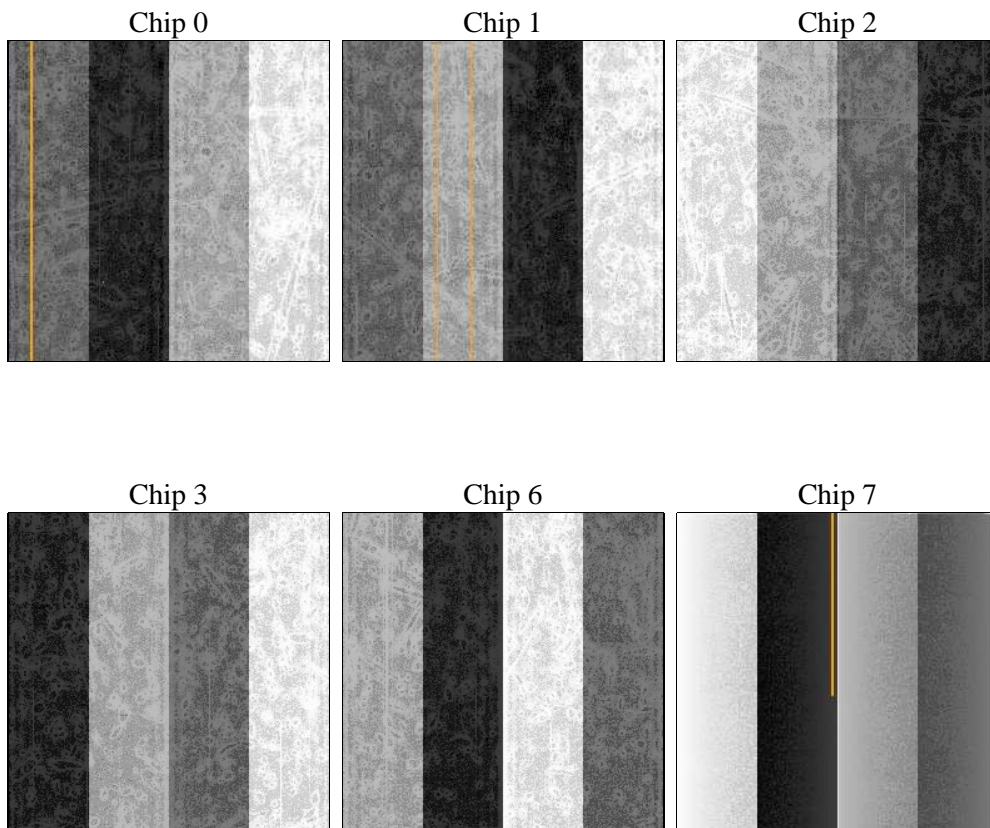
## 2 OBI

### 2.1 OBI

#### 2.1.1 Images



#### 2.1.2 Bias



### 2.1.3 Parameters

obi_num	0	Obi number	sched_exp_time	0.0	[s] Scheduled observation exposure time
ascdsver	8.4.5	Processing system revision	ontime	7807.9999709129	Sum of GTIs [s]
caldsver	4.5.2	&#160	ontime0	5077.7783191502	Sum of GTIs [s]
date	2012-11-09T06:41:56	Date and time of file creation	ontime1	5149.1209353805	Sum of GTIs [s]
revision	3	Processing version of data	ontime2	4904.0876868367	Sum of GTIs [s]
			ontime3	5049.9324645698	Sum of GTIs [s]
			ontime6	5351.3423894346	Sum of GTIs [s]
			ontime7	7807.9999709129	Sum of GTIs [s]
			l1events	1422126	Number of level 1 events

### 2.1.4 Events

	ccd 0	ccd 1	ccd 2	ccd 3	ccd 6	ccd 7		ccd 0	ccd 1	ccd 2	ccd 3	ccd 6	ccd 7
level 1 events	212952	215449	207078	215508	233912	337227	grade 0 events	100152	100694	98572	102710	108433	74837
rejected events	31831	31109	31096	32757	33596	39886		47%	46%	47%	47%	46%	22%
rejected %	14%	14%	15%	15%	14%	11%	grade 1 events	559	485	575	578	516	229
								0%	0%	0%	0%	0%	0%
							grade 2 events	31490	32832	29720	30873	34655	65725
								14%	15%	14%	14%	14%	19%
							grade 3 events	11447	11630	11570	11946	12295	29713
								5%	5%	5%	5%	5%	8%
							grade 4 events	11389	11439	11298	11882	12457	29276
								5%	5%	5%	5%	5%	8%
							grade 5 events	2080	2189	1977	2219	2474	7438
								0%	1%	0%	1%	1%	2%
							grade 6 events	26643	27745	24941	25478	32601	97900
								12%	12%	12%	11%	13%	29%
							grade 7 events	29192	28435	28425	29822	30481	32109
								13%	13%	13%	13%	13%	9%

## 2.2 Compared Parameters

Parameter	Planned	Actual	Parameter	Planned	Actual
Instrument	ACIS	ACIS	Obspar format version number	7	7
Detector	ACIS-012367	ACIS-012367	Obspar file type	PREDICTED	ACTUAL
Grating	NONE	NONE	Obspar update status	NONE	UPDATED
Data mode	FAINT	FAINT	On-chip summing requested	N	N
Observation mode	SECONDARY	SECONDARY	Subarray requested	NONE	NONE
[deg] Pointing RA	0	65.38543954452007	Alternating exposures requested	N	N
[deg] Pointing Dec	0	44.97333497021052	[s] Primary exposure time	0.000000	3.2
[deg] Pointing Roll	0.0	216.0289397782252			
[mm] SIM focus pos	-0.782348	-0.6828225247311905			
[mm] SIM defocus	0	0.8505141146731063			
[mm] SIM translation stage pos	-233.592463	250.466033080201			
[mm] SIM translation stage offset	0	-0.01005468664627074			
[s] Observation start time (MET)	187788768.269362	187788767.24465			
Observation start date	2003-12-14T11:32:48	2003-12-14T11:32:47			
[s] Observation end time (MET)	187805268.720078	187805267.69537			
Observation end date	2003-12-14T16:07:49	2003-12-14T16:07:47			
Read mode	TIMED	TIMED			

## 2.3 Star Slots

## 2.4 FID Slots

## A Summary

### A.1 Status

V&V Scientist	Beth Sundheim
V&V Date (YYYY-MM-DD)	2012.12.14
V&V Edition	1
V&V Disposition and Status	OK
V&V Charge Time	7.8079999709129

### A.2 Comments