

# V&V Reference Report

## L2 ASCDS Version : 8.4.5

Observation 60445 - L2 Version 3  
Chandra X-Ray Center

L2 Processing Date : Nov 9 2012

## Contents

<b>1</b>	<b>Front</b>	<b>2</b>
<b>2</b>	<b>OBI</b>	<b>3</b>
2.1	OBI . . . . .	3
2.1.1	Images . . . . .	3
2.1.2	Bias . . . . .	3
2.1.3	Parameters . . . . .	4
2.1.4	Events . . . . .	4
2.2	Compared Parameters . . . . .	5
2.3	Star Slots . . . . .	6
2.4	FID Slots . . . . .	6
<b>A</b>	<b>Summary</b>	<b>7</b>
A.1	Status . . . . .	7
A.2	Comments . . . . .	7

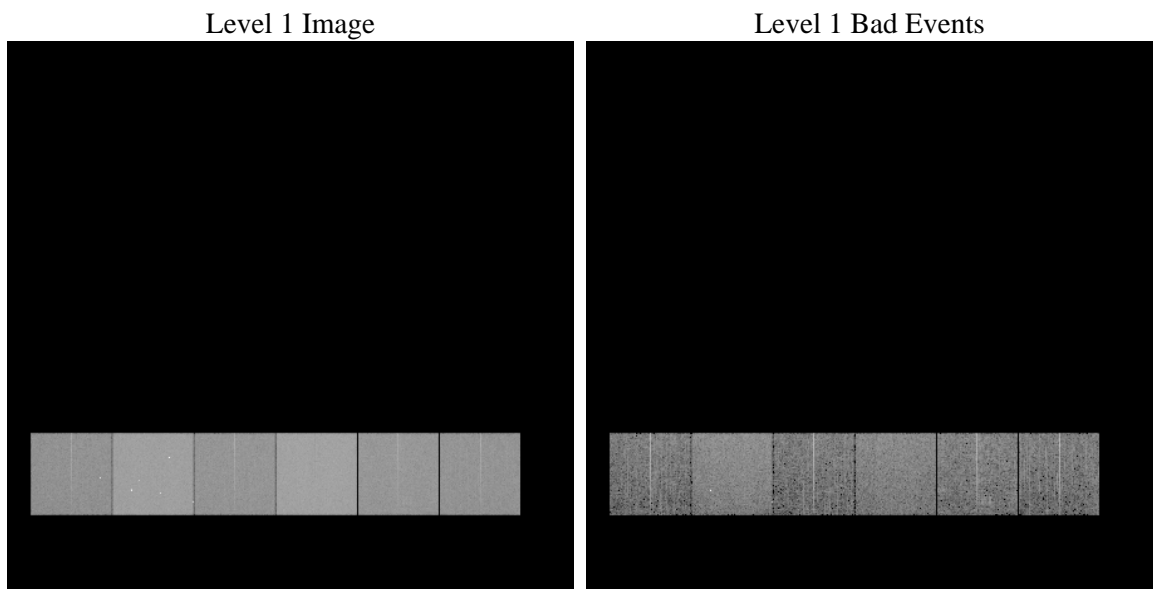
# 1 Front

seq_num	&#160	Sequence number
obs_id	60445	Observation id
title	ACIS-456789 diagnostics	Proposal title
observer	CHANDRA engineering request/realtime commanding	Principal investig
object	&#160	Source name
dtcycle	0	&#160
cycle	P	events from which exps? Prim/Second/Both
ra_targ	0.0	Observer's specified target RA [deg]
dec_targ	0.0	Observer's specified target Dec [deg]
ra_nom	244.83582060292	Nominal RA [deg]
dec_nom	-80.002419916187	Nominal Dec [deg]
roll_nom	151.90963627304	Nominal Roll [deg]
revision	3	Processing version of data
ontime	8449.8062775731	Sum of GTIs [s]
livetime	8342.809742624	Livetime [s]
ontime4	4861.5328741074	Sum of GTIs [s]
ontime5	8449.7652375698	Sum of GTIs [s]
ontime6	5250.4505491853	Sum of GTIs [s]
ontime7	8449.8062775731	Sum of GTIs [s]
ontime8	5490.2824751437	Sum of GTIs [s]
ontime9	5130.5351076722	Sum of GTIs [s]
l2events	1230276	Number of level 2 events

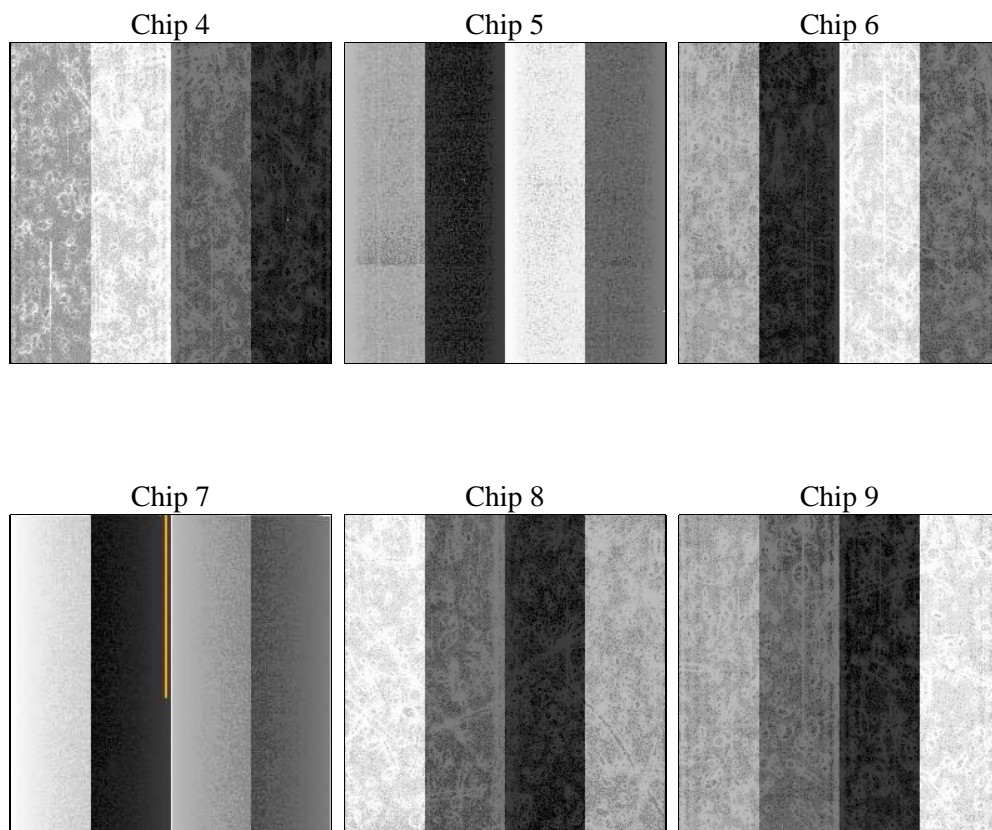
## 2 OBI

### 2.1 OBI

#### 2.1.1 Images



#### 2.1.2 Bias



### 2.1.3 Parameters

obi_num	0	Obi number	sched_exp_time	0.0	[s] Scheduled observation exposure time
ascdsver	8.4.5	Processing system revision	ontime	8449.8062775731	Sum of GTIs [s]
caldbver	4.5.2	&#160	ontime4	4861.5328741074	Sum of GTIs [s]
date	2012-11-09T10:06:38	Date and time of file creation	ontime5	8449.7652375698	Sum of GTIs [s]
revision	3	Processing version of data	ontime6	5250.4505491853	Sum of GTIs [s]
			ontime7	8449.8062775731	Sum of GTIs [s]
			ontime8	5490.2824751437	Sum of GTIs [s]
			ontime9	5130.5351076722	Sum of GTIs [s]
			l1events	1534306	Number of level 1 events

### 2.1.4 Events

	ccd 4	ccd 5	ccd 6	ccd 7	ccd 8	ccd 9		ccd 4	ccd 5	ccd 6	ccd 7	ccd 8	ccd 9
level 1 events	194586	326017	219845	348173	236165	209520	grade 0 events	94588	65083	102261	75110	108555	97297
rejected events	32818	53053	32908	43822	38195	33615		48%	19%	46%	21%	45%	46%
rejected %	16%	16%	14%	12%	16%	16%	grade 1 events	658	295	478	209	533	528
								0%	0%	0%	0%	0%	0%
							grade 2 events	25592	96829	32370	66875	34408	30134
								13%	29%	14%	19%	14%	14%
							grade 3 events	10585	16746	11670	30472	12796	11419
								5%	5%	5%	8%	5%	5%
							grade 4 events	10611	16365	11580	30252	12672	11076
								5%	5%	5%	8%	5%	5%
							grade 5 events	2081	9302	2385	8060	3001	2472
								1%	2%	1%	2%	1%	1%
							grade 6 events	20487	78348	29287	102112	29753	26190
								10%	24%	13%	29%	12%	12%
							grade 7 events	29984	43049	29814	35083	34447	30404
								15%	13%	13%	10%	14%	14%

## 2.2 Compared Parameters

Parameter	Planned	Actual
Instrument	ACIS	ACIS
Detector	ACIS-456789	ACIS-456789
Grating	NONE	NONE
Data mode	FAINT	FAINT
Observation mode	SECONDARY	SECONDARY
[deg] Pointing RA	0	244.8358206029246
[deg] Pointing Dec	0	-80.00241991618665
[deg] Pointing Roll	0.0	151.9096362730413
[mm] SIM focus pos	-0.684267	-0.7809083437167272
[mm] SIM defocus	0	0.7524282956875696
[mm] SIM translation stage pos	-190.132523	250.466033080201
[mm] SIM translation stage offset	0	-0.01005468664627074
[s] Observation start time (MET)	188512397.800818	188512396.7761
Observation start date	2003-12-22T20:33:18	2003-12-22T20:33:16
[s] Observation end time (MET)	188535193.80181	188535192.77709
Observation end date	2003-12-23T02:53:14	2003-12-23T02:53:12
Read mode	TIMED	TIMED

Parameter	Planned	Actual
Obspar format version number	7	7
Obspar file type	PREDICTED	ACTUAL
Obspar update status	NONE	UPDATED
On-chip summing requested	N	N
Subarray requested	NONE	NONE
Alternating exposures requested	N	N
[s] Primary exposure time	0.000000	3.2

## **2.3 Star Slots**

## **2.4 FID Slots**

## A Summary

### A.1 Status

V&V Scientist	Beth Sundheim
V&V Date (YYYY-MM-DD)	2012.12.11
V&V Edition	1
V&V Disposition and Status	OK
V&V Charge Time	8.4498062775731

### A.2 Comments