

V&V Reference Report

L2 ASCDS Version : 8.4.5

Observation 62853 - L2 Version 3
Chandra X-Ray Center

L2 Processing Date : Sep 30 2012

Contents

1	Front	2
2	OBI	3
2.1	OBI	3
2.1.1	Images	3
2.1.2	Bias	3
2.1.3	Parameters	4
2.1.4	Events	4
2.2	Compared Parameters	5
2.3	Star Slots	6
2.4	FID Slots	6
A	Summary	7
A.1	Status	7
A.2	Comments	7

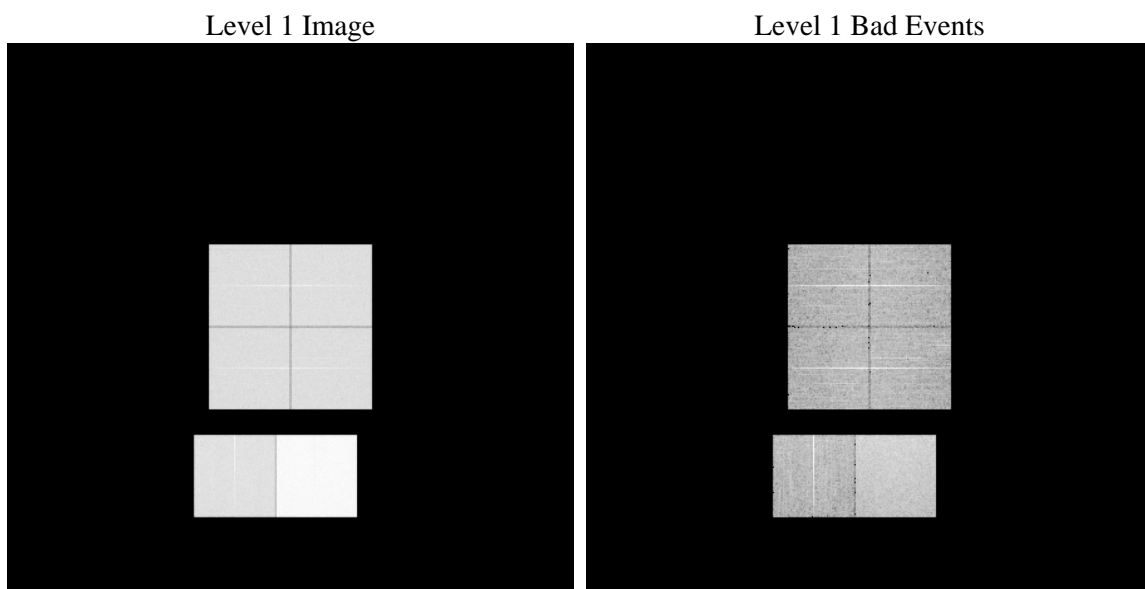
1 Front

seq_num	 	Sequence number
obs_id	62853	Observation id
title	ACIS-012367 diagnostics	Proposal title
observer	CHANDRA engineering request/realtime commanding	Principal investig
object	 	Source name
dtcycle	0	
cycle	P	events from which exps? Prim/Second/Both
ra_targ	0.0	Observer's specified target RA [deg]
dec_targ	0.0	Observer's specified target Dec [deg]
ra_nom	169.54285760828	Nominal RA [deg]
dec_nom	48.04686360776	Nominal Dec [deg]
roll_nom	99.043500927422	Nominal Roll [deg]
revision	3	Processing version of data
ontime	18961.283647642	Sum of GTIs [s]
livetime	18721.184456981	Livetime [s]
ontime0	7331.2249448746	Sum of GTIs [s]
ontime1	7502.9979125261	Sum of GTIs [s]
ontime2	7042.7740503103	Sum of GTIs [s]
ontime3	7110.8349930197	Sum of GTIs [s]
ontime6	7753.8252619356	Sum of GTIs [s]
ontime7	18961.283647642	Sum of GTIs [s]
l2events	2999102	Number of level 2 events

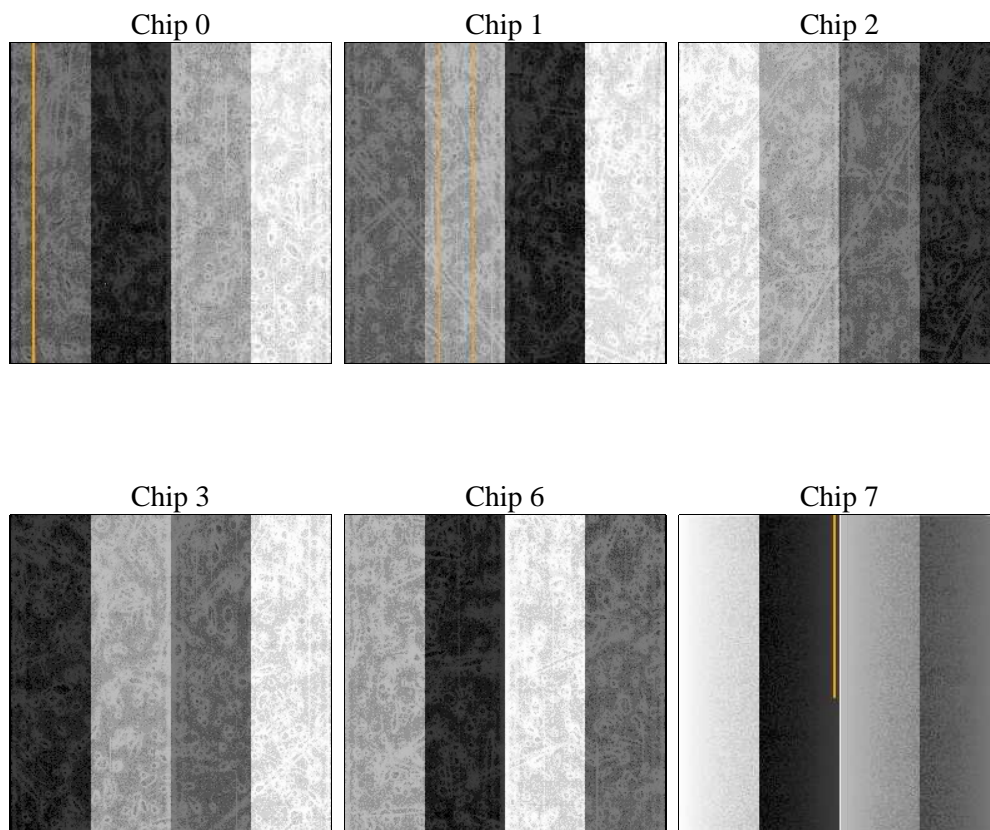
2 OBI

2.1 OBI

2.1.1 Images



2.1.2 Bias



2.1.3 Parameters

obi_num	0	Obi number	sched_exp_time	0.0	[s] Scheduled observation exposure time
ascdsver	8.4.5	Processing system revision	ontime	18961.283647642	Sum of GTIs [s]
caldsver	4.5.2	 	ontime0	7331.2249448746	Sum of GTIs [s]
date	2012-09-30T08:02:45	Date and time of file creation	ontime1	7502.9979125261	Sum of GTIs [s]
revision	3	Processing version of data	ontime2	7042.7740503103	Sum of GTIs [s]
			ontime3	7110.8349930197	Sum of GTIs [s]
			ontime6	7753.8252619356	Sum of GTIs [s]
			ontime7	18961.283647642	Sum of GTIs [s]
			l1events	3492672	Number of level 1 events

2.1.4 Events

	ccd 0	ccd 1	ccd 2	ccd 3	ccd 6	ccd 7		ccd 0	ccd 1	ccd 2	ccd 3	ccd 6	ccd 7
level 1 events	451117	463809	443203	448968	505863	1179712	grade 0 events	221333	227402	217710	221594	244693	274701
rejected events	50991	52618	52531	54161	58205	99768		49%	49%	49%	49%	48%	23%
rejected %	11%	11%	11%	12%	11%	8%	grade 1 events	1120	1185	1030	1183	1181	748
								0%	0%	0%	0%	0%	0%
							grade 2 events	71154	72936	69079	69181	78115	239145
								15%	15%	15%	15%	15%	20%
							grade 3 events	25141	26165	24630	25117	27649	110592
								5%	5%	5%	5%	5%	9%
							grade 4 events	25512	26248	24380	25320	27559	109173
								5%	5%	5%	5%	5%	9%
							grade 5 events	3737	3761	3522	3712	4394	19973
								0%	0%	0%	0%	0%	1%
							grade 6 events	58241	59845	56124	55062	71385	350000
								12%	12%	12%	12%	14%	29%
							grade 7 events	44879	46267	46728	47799	50887	75380
								9%	9%	10%	10%	10%	6%

2.2 Compared Parameters

Parameter	Planned	Actual	Parameter	Planned	Actual
Instrument	ACIS	ACIS	Obspar format version number	7	7
Detector	ACIS-012367	ACIS-012367	Obspar file type	PREDICTED	ACTUAL
Grating	NONE	NONE	Obspar update status	NONE	UPDATED
Data mode	FAINT	FAINT	On-chip summing requested	N	N
Observation mode	SECONDARY	SECONDARY	Subarray requested	NONE	NONE
[deg] Pointing RA	0	169.5428576082795	Alternating exposures requested	N	N
[deg] Pointing Dec	0	48.04686360775951	[s] Primary exposure time	0.000000	3.2
[deg] Pointing Roll	0.0	99.043500927422			
[mm] SIM focus pos	-0.782348	-0.6828225247311905			
[mm] SIM defocus	0	0.8505141146731063			
[mm] SIM translation stage pos	-233.592463	250.466033080201			
[mm] SIM translation stage offset	0	-0.01005468664627074			
[s] Observation start time (MET)	127172657.831	127172657.06222			
Observation start date	2002-01-11T21:44:18	2002-01-11T21:44:17			
[s] Observation end time (MET)	127193645.732	127193644.96306			
Observation end date	2002-01-12T03:34:06	2002-01-12T03:34:04			
Read mode	TIMED	TIMED			

2.3 Star Slots

2.4 FID Slots

A Summary

A.1 Status

V&V Scientist	Beth Sundheim
V&V Date (YYYY-MM-DD)	2012.10.02
V&V Edition	1
V&V Disposition and Status	OK
V&V Charge Time	18.961283647642

A.2 Comments