

V&V Reference Report

L2 ASCDS Version : 7.6.8.1

Observation 62853 - L2 Version 001
Chandra X-Ray Center

L2 Processing Date : Aug 26 2006

Contents

1	Front	2
2	OBI	3
2.1	OBI	3
2.1.1	Images	3
2.1.2	Bias	3
2.1.3	Parameters	4
2.1.4	Events	4
2.2	Compared Parameters	5
2.3	Aspect	6
2.4	Star Slots	8
2.5	FID Slots	8
A	Summary	9
A.1	Status	9
A.2	Comments	9

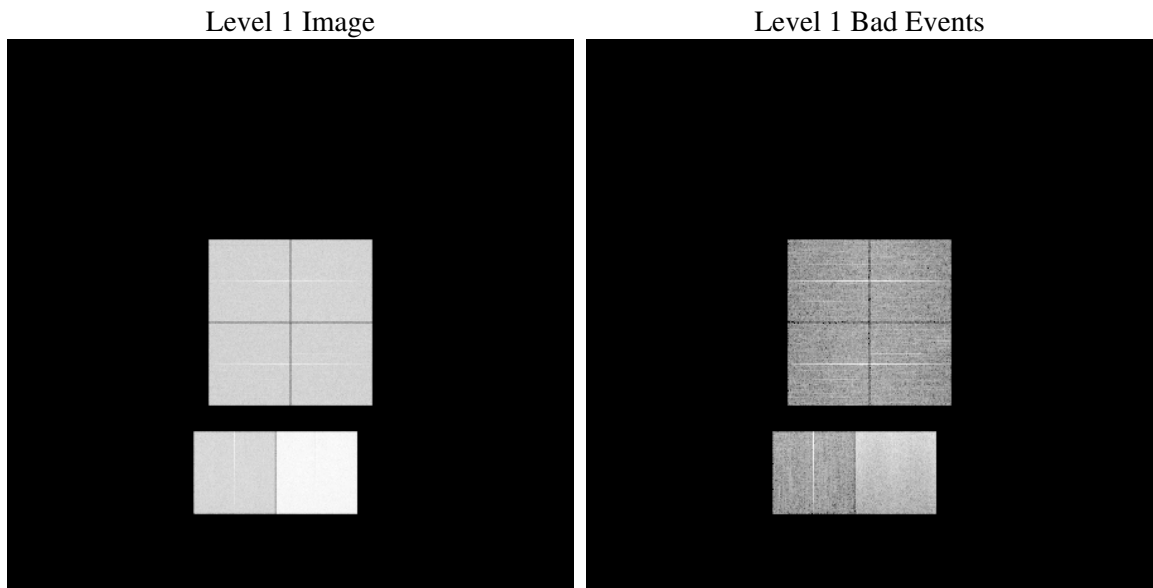
1 Front

seq_num	
obs_id	62853
title	ACIS-012367 diagnostics
observer	CHANDRA engineering request/realtime commanding
object	
dtcycle	0
cycle	P
ra_targ	0.0
dec_targ	0.0
ra_nom	169.54285760901
dec_nom	48.046863586883
roll_nom	99.043500925678
revision	2
ontime	18962.175981075
livetime	18722.065491151
ontime0	7330.558318302
ontime1	7502.3723259419
ontime2	7042.1895037293
ontime3	7110.0862864405
ontime6	7754.8817553669
ontime7	18962.175981075
l2events	2963056

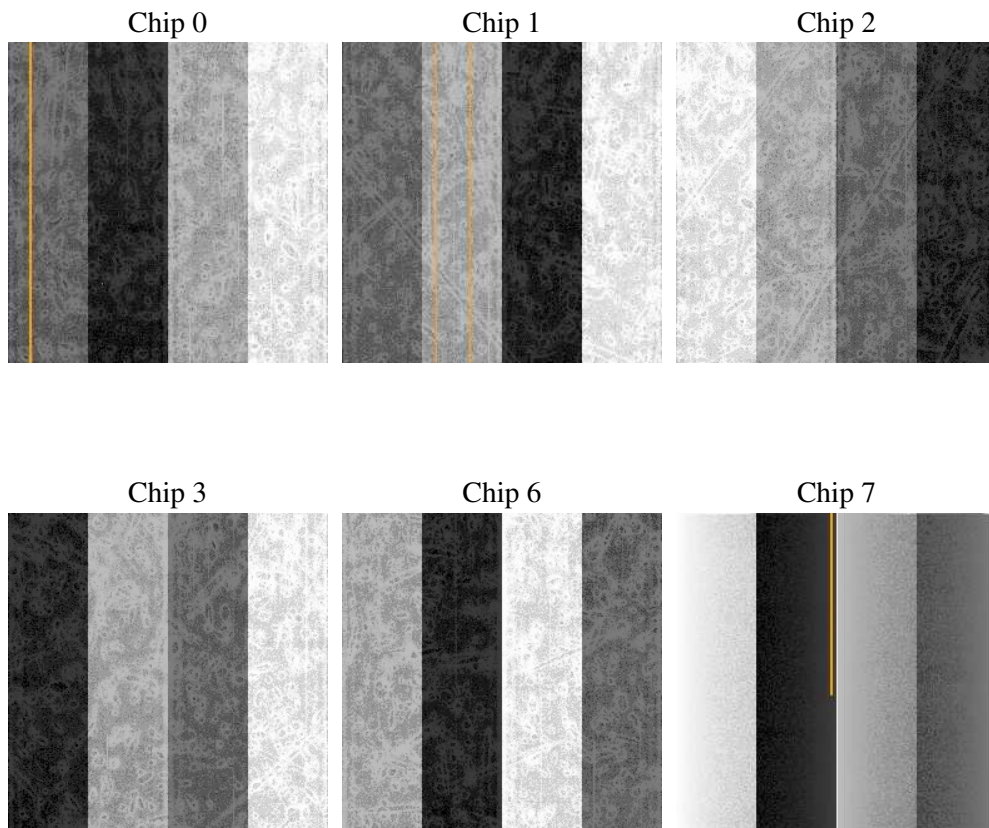
2 OBI

2.1 OBI

2.1.1 Images



2.1.2 Bias



2.1.3 Parameters

obi_num	0
ascdsver	7.6.8.1
caldbver	3.2.3
date	2006-08-26T17:22:08
revision	2

sched_exp_time	0.0
ontime	19024.671641499
ontime0	7353.9121749699
ontime1	7528.9262324572
ontime2	7065.4613302499
ontime3	7136.7633129507
ontime6	7781.7267032415
ontime7	19024.671641499
l1events	3492672

2.1.4 Events

	ccd 0	ccd 1	ccd 2	ccd 3	ccd 6	ccd 7
level 1 events	451117	463809	443203	448968	505863	1179712
rejected events	50991	52617	52532	54161	58008	136320
rejected %	11%	11%	11%	12%	11%	11%

	ccd 0	ccd 1	ccd 2	ccd 3	ccd 6	ccd 7
grade 0 events	221332	227402	217710	221594	244692	194161
	49%	49%	49%	49%	48%	16%
grade 1 events	1120	1185	1031	1183	1181	489
	0%	0%	0%	0%	0%	0%
grade 2 events	71155	72936	69078	69181	78116	313659
	15%	15%	15%	15%	15%	26%
grade 3 events	25141	26165	24630	25118	27649	79393
	5%	5%	5%	5%	5%	6%
grade 4 events	25512	26248	24380	25319	27559	77948
	5%	5%	5%	5%	5%	6%
grade 5 events	3737	3761	3522	3712	4394	18437
	0%	0%	0%	0%	0%	1%
grade 6 events	58241	59846	56124	55062	71385	381591
	12%	12%	12%	12%	14%	32%
grade 7 events	44879	46266	46728	47799	50887	114034
	9%	9%	10%	10%	10%	9%

2.2 Compared Parameters

Parameter	Planned	Actual	Parameter	Planned	Actual
Instrument	ACIS	ACIS	Obspar format version number	6	6
Detector	ACIS-012367	ACIS-012367	Obspar file type	PREDICTED	ACTUAL
Grating	NONE	NONE	Obspar update status	NONE	UPDATED
Data mode	FAINT	FAINT	On-chip summing requested	N	N
Observation mode	SECONDARY	SECONDARY	Subarray requested	NONE	NONE
Pointing RA	0	169.5428576090127	Alternating exposures requested	N	N
Pointing Dec	0	48.046863586883	Primary exposure time	0.000000	3.2
Pointing Roll	0.0	99.04350092567796			
SIM focus pos (mm)	-0.782348	-0.6828225247311905			
SIM defocus (mm)	0	0.8505141146731063			
SIM translation stage pos (mm)	-233.592463	250.466033080201			
SIM translation stage offset (mm)	0	-0.01005468664627074			
Observation start time	127172657.831	127172657.06222			
Observation start date	2002-01-11T21:44:18	2002-01-11T21:44:17			
Observation end time	127193645.732	127193644.96306			
Observation end date	2002-01-12T03:34:06	2002-01-12T03:34:04			
Read mode	TIMED	TIMED			

2.3 Aspect

2.4 Star Slots

2.5 FID Slots

A Summary

A.1 Status

V&V Scientist	Jen Lauer
V&V Date (YYYY-MM-DD)	2006.08.28
V&V Edition	1
V&V Disposition and Status	OK
V&V Charge Time	18.9621759

A.2 Comments