

V&V Reference Report

L2 ASCDS Version : 7.6.8.1

Observation 61355 - L2 Version 001
Chandra X-Ray Center

L2 Processing Date : Aug 26 2006

Contents

1	Front	2
2	OBI	3
2.1	OBI	3
2.1.1	Images	3
2.1.2	Bias	3
2.1.3	Parameters	4
2.1.4	Events	4
2.2	Compared Parameters	5
2.3	Aspect	6
2.4	Star Slots	8
2.5	FID Slots	8
A	Summary	9
A.1	Status	9
A.2	Comments	9

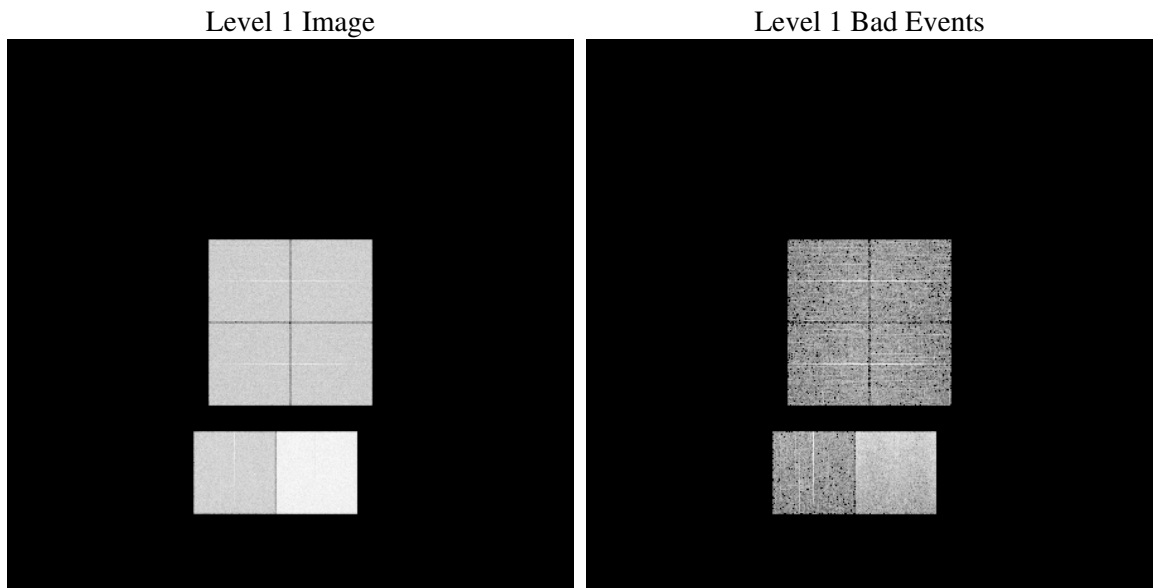
1 Front

seq_num	
obs_id	61355
title	ACIS-012367 diagnostics
observer	CHANDRA engineering request/realtime commanding
object	
dtcycle	0
cycle	P
ra_targ	0.0
dec_targ	0.0
ra_nom	352.0229571244
dec_nom	-11.517734915937
roll_nom	288.96292940281
revision	2
ontime	7622.4000070989
livetime	7525.8805885508
ontime0	2958.6335769147
ontime1	3060.5388873219
ontime2	2840.1904930472
ontime3	2901.6056545824
ontime6	3185.5053298324
ontime7	7622.4000070989
l2events	1198020

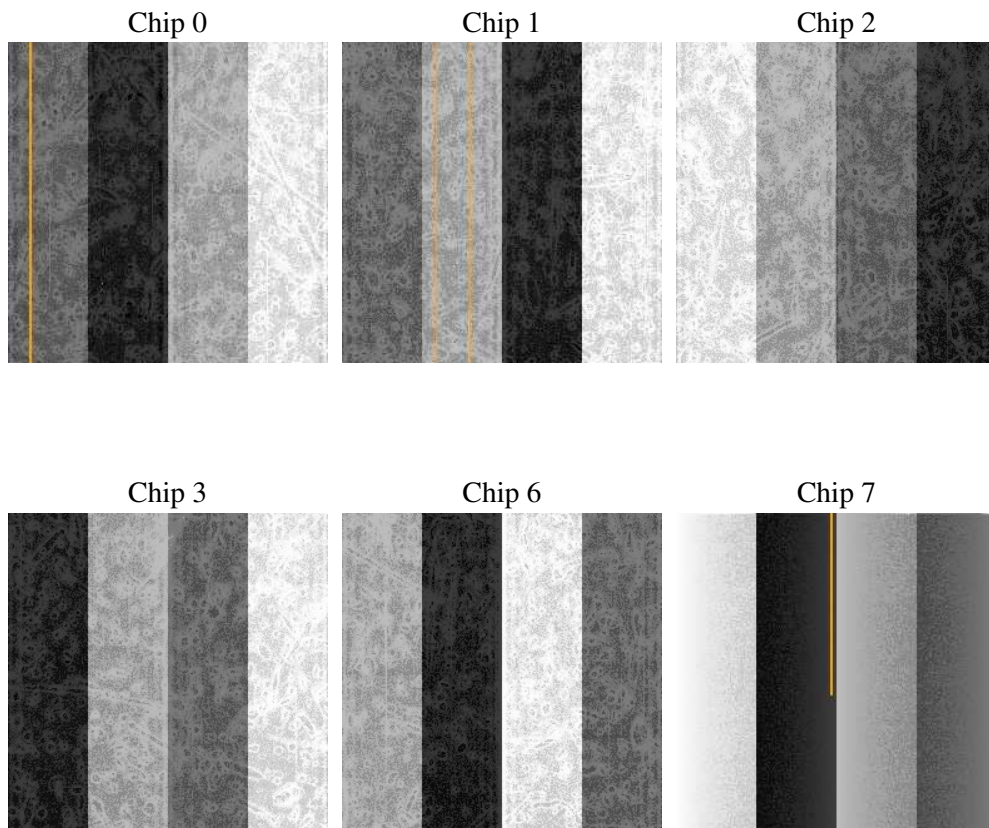
2 OBI

2.1 OBI

2.1.1 Images



2.1.2 Bias



2.1.3 Parameters

obi_num	0
ascdsver	7.6.8.1
caldsver	3.2.3
date	2006-08-26T16:52:01
revision	2

sched_exp_time	0.0
ontime	7626.0732264519
ontime0	2962.3067962676
ontime1	3062.7784281224
ontime2	2842.3889938444
ontime3	2903.9683153778
ontime6	3189.1785491854
ontime7	7626.0732264519
l1events	1415057

2.1.4 Events

	ccd 0	ccd 1	ccd 2	ccd 3	ccd 6	ccd 7
level 1 events	183429	188190	180250	183614	205648	473926
rejected events	21318	21752	22962	23000	23131	54288
rejected %	11%	11%	12%	12%	11%	11%

	ccd 0	ccd 1	ccd 2	ccd 3	ccd 6	ccd 7
grade 0 events	89099	92226	87906	89961	100082	78383
	48%	49%	48%	48%	48%	16%
grade 1 events	448	424	411	462	445	181
	0%	0%	0%	0%	0%	0%
grade 2 events	28853	29535	27777	28396	31676	126572
	15%	15%	15%	15%	15%	26%
grade 3 events	10154	10356	9751	10149	11155	31662
	5%	5%	5%	5%	5%	6%
grade 4 events	10314	10483	9633	10028	11144	31209
	5%	5%	5%	5%	5%	6%
grade 5 events	1453	1519	1469	1620	1658	7473
	0%	0%	0%	0%	0%	1%
grade 6 events	23853	24031	22398	22272	28650	151981
	13%	12%	12%	12%	13%	32%
grade 7 events	19255	19616	20905	20726	20838	46465
	10%	10%	11%	11%	10%	9%

2.2 Compared Parameters

Parameter	Planned	Actual	Parameter	Planned	Actual
Instrument	ACIS	ACIS	Obspar format version number	6	6
Detector	ACIS-012367	ACIS-012367	Obspar file type	PREDICTED	ACTUAL
Grating	NONE	NONE	Obspar update status	NONE	UPDATED
Data mode	FAINT	FAINT	On-chip summing requested	N	N
Observation mode	SECONDARY	SECONDARY	Subarray requested	NONE	NONE
Pointing RA	0	352.0229571243978	Alternating exposures requested	N	N
Pointing Dec	0	-11.51773491593663	Primary exposure time	0.000000	3.2
Pointing Roll	0.0	288.9629294028139			
SIM focus pos (mm)	-0.782348	-0.6828225247311905			
SIM defocus (mm)	0	0.8505141146731063			
SIM translation stage pos (mm)	-233.592463	250.466033080201			
SIM translation stage offset (mm)	0	-0.01005468664627074			
Observation start time	127020625.725	127020624.9561			
Observation start date	2002-01-10T03:30:26	2002-01-10T03:30:24			
Observation end time	127041519.325	127041518.55694			
Observation end date	2002-01-10T09:18:39	2002-01-10T09:18:38			
Read mode	TIMED	TIMED			

2.3 Aspect

2.4 Star Slots

2.5 FID Slots

A Summary

A.1 Status

V&V Scientist	Jen Lauer
V&V Date (YYYY-MM-DD)	2006.08.28
V&V Edition	1
V&V Disposition and Status	OK
V&V Charge Time	7.6224

A.2 Comments

The ACIS focal plane temperature was above calibration limits for the entire observation.