

V&V Reference Report

L2 ASCDS Version : 7.6.8.1

Observation 61331 - L2 Version 001
Chandra X-Ray Center

L2 Processing Date : Aug 29 2006

Contents

1	Front	2
2	OBI	3
2.1	OBI	3
2.1.1	Images	3
2.1.2	Bias	3
2.1.3	Parameters	4
2.1.4	Events	4
2.2	Compared Parameters	5
2.3	Aspect	6
2.4	Star Slots	8
2.5	FID Slots	8
A	Summary	9
A.1	Status	9
A.2	Comments	9

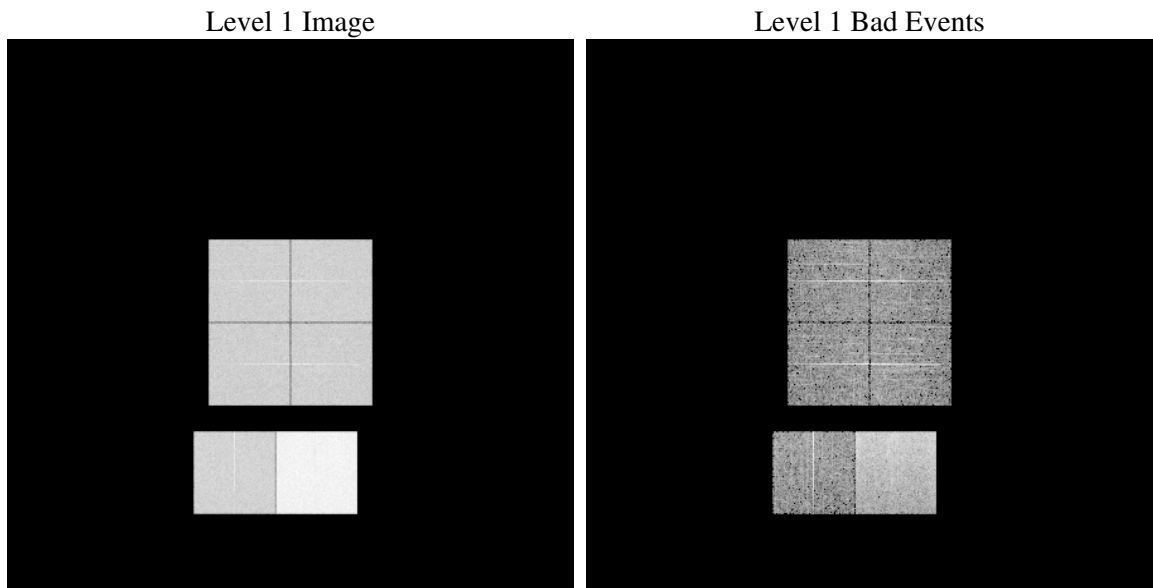
1 Front

seq_num	
obs_id	61331
title	ACIS-012367 diagnostics
observer	CHANDRA engineering request/realtime commanding
object	
dtcycle	0
cycle	P
ra_targ	0.0
dec_targ	0.0
ra_nom	179.9697097549
dec_nom	44.018593617593
roll_nom	106.72465675945
revision	2
ontime	8204.8000076413
livetime	8100.9058896071
ontime0	3259.7026661485
ontime1	3336.8506448269
ontime2	3148.8712519407
ontime3	3165.0761927962
ontime6	3453.5269883871
ontime7	8204.8000076413
l2events	1290680

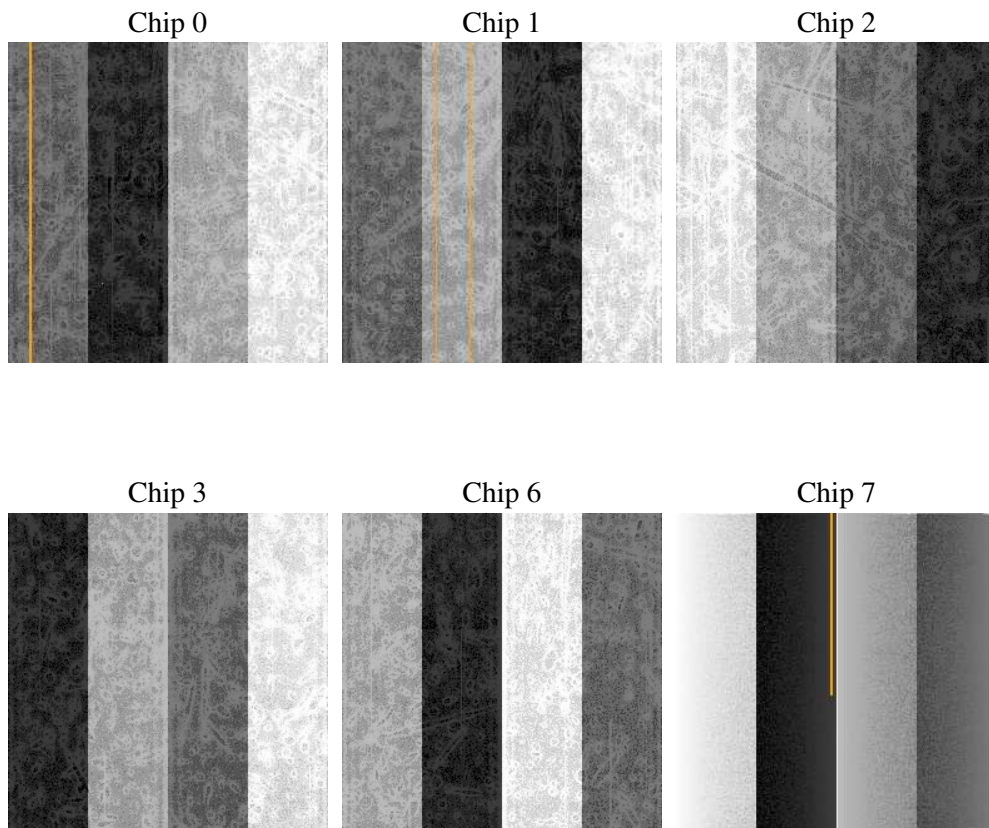
2 OBI

2.1 OBI

2.1.1 Images



2.1.2 Bias



2.1.3 Parameters

obi_num	0
ascdsver	7.6.8.1
caldsver	3.2.3
date	2006-08-30T00:33:07
revision	2

sched_exp_time	0.0
ontime	8293.7229639739
ontime0	3296.1328784227
ontime1	3367.4358776063
ontime2	3179.456504643
ontime3	3195.6614454985
ontime6	3487.3532312661
ontime7	8293.7229639739
l1events	1534039

2.1.4 Events

	ccd 0	ccd 1	ccd 2	ccd 3	ccd 6	ccd 7
level 1 events	201595	204650	197944	198792	222706	508352
rejected events	24558	23824	24515	25733	26565	63503
rejected %	12%	11%	12%	12%	11%	12%

	ccd 0	ccd 1	ccd 2	ccd 3	ccd 6	ccd 7
grade 0 events	98381	100744	97206	97882	108194	83427
	48%	49%	49%	49%	48%	16%
grade 1 events	487	489	438	504	514	210
	0%	0%	0%	0%	0%	0%
grade 2 events	31613	32189	30885	30577	34015	134707
	15%	15%	15%	15%	15%	26%
grade 3 events	11553	11530	10909	11099	12113	33816
	5%	5%	5%	5%	5%	6%
grade 4 events	11445	11548	10998	10913	12273	33413
	5%	5%	5%	5%	5%	6%
grade 5 events	1636	1661	1558	1670	1971	8210
	0%	0%	0%	0%	0%	1%
grade 6 events	25963	26414	25076	24181	31317	164247
	12%	12%	12%	12%	14%	32%
grade 7 events	20517	20075	20874	21966	22309	50322
	10%	9%	10%	11%	10%	9%

2.2 Compared Parameters

Parameter	Planned	Actual	Parameter	Planned	Actual
Instrument	ACIS	ACIS	Obspar format version number	6	6
Detector	ACIS-012367	ACIS-012367	Obspar file type	PREDICTED	ACTUAL
Grating	NONE	NONE	Obspar update status	NONE	UPDATED
Data mode	FAINT	FAINT	On-chip summing requested	N	N
Observation mode	SECONDARY	SECONDARY	Subarray requested	NONE	NONE
Pointing RA	0	179.9697097548956	Alternating exposures requested	N	N
Pointing Dec	0	44.01859361759296	Primary exposure time	0.000000	3.2
Pointing Roll	0.0	106.7246567594459			
SIM focus pos (mm)	-0.782348	-0.6828225247311905			
SIM defocus (mm)	0	0.8505141146731063			
SIM translation stage pos (mm)	-233.592463	250.466033080201			
SIM translation stage offset (mm)	0	-0.01005468664627074			
Observation start time	128649041.24	128649040.47165			
Observation start date	2002-01-28T23:50:41	2002-01-28T23:50:40			
Observation end time	128671470.291	128671469.52255			
Observation end date	2002-01-29T06:04:30	2002-01-29T06:04:29			
Read mode	TIMED	TIMED			

2.3 Aspect

2.4 Star Slots

2.5 FID Slots

A Summary

A.1 Status

V&V Scientist	Jen Lauer
V&V Date (YYYY-MM-DD)	2006.08.30
V&V Edition	1
V&V Disposition and Status	OK
V&V Charge Time	8.2048

A.2 Comments