

# V&V Reference Report

## L2 ASCDS Version : 8.4.5

Observation 61321 - L2 Version 3  
Chandra X-Ray Center

L2 Processing Date : Oct 2 2012

## Contents

<b>1</b>	<b>Front</b>	<b>2</b>
<b>2</b>	<b>OBI</b>	<b>3</b>
2.1	OBI . . . . .	3
2.1.1	Images . . . . .	3
2.1.2	Bias . . . . .	3
2.1.3	Parameters . . . . .	4
2.1.4	Events . . . . .	4
2.2	Compared Parameters . . . . .	5
2.3	Star Slots . . . . .	6
2.4	FID Slots . . . . .	6
<b>A</b>	<b>Summary</b>	<b>7</b>
A.1	Status . . . . .	7
A.2	Comments . . . . .	7

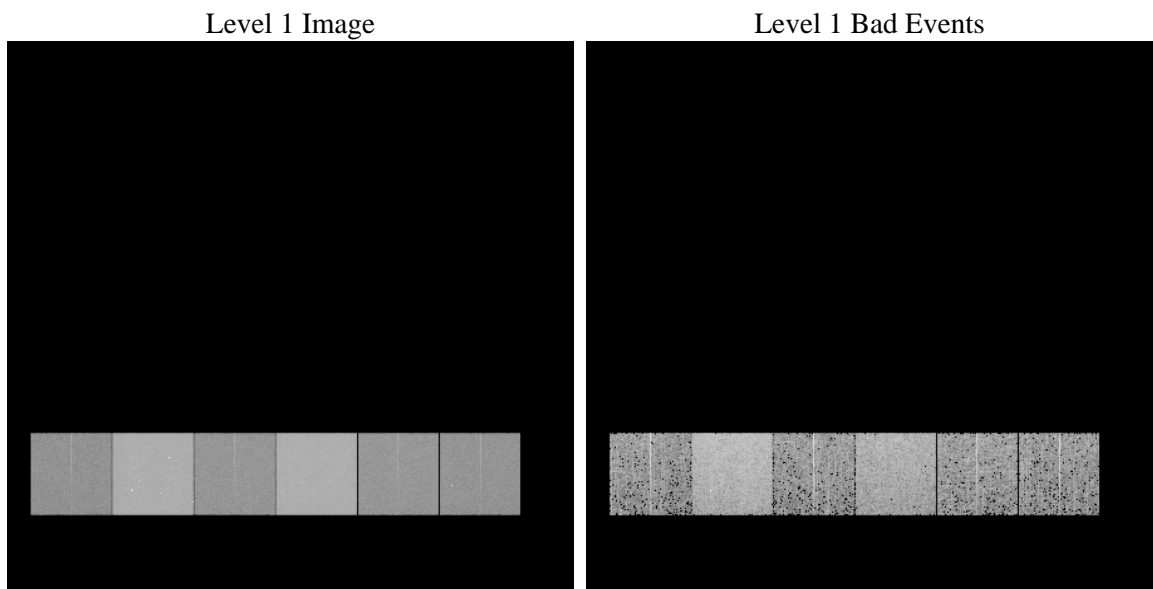
# 1 Front

seq_num	&#160	Sequence number
obs_id	61321	Observation id
title	ACIS-456789 diagnostics	Proposal title
observer	CHANDRA engineering request/realtime commanding	Principal investig
object	&#160	Source name
dtcycle	0	&#160
cycle	P	events from which exps? Prim/Second/Both
ra_targ	0.0	Observer's specified target RA [deg]
dec_targ	0.0	Observer's specified target Dec [deg]
ra_nom	90.014850264183	Nominal RA [deg]
dec_nom	29.974414727303	Nominal Dec [deg]
roll_nom	263.88600355841	Nominal Roll [deg]
revision	3	Processing version of data
ontime	6405.736369893	Sum of GTIs [s]
livetime	6324.623078906	Livetime [s]
ontime4	2401.6082317829	Sum of GTIs [s]
ontime5	6867.6884740889	Sum of GTIs [s]
ontime6	2618.7573531568	Sum of GTIs [s]
ontime7	6405.736369893	Sum of GTIs [s]
ontime8	2670.614222154	Sum of GTIs [s]
ontime9	2511.8032326698	Sum of GTIs [s]
l2events	1204585	Number of level 2 events

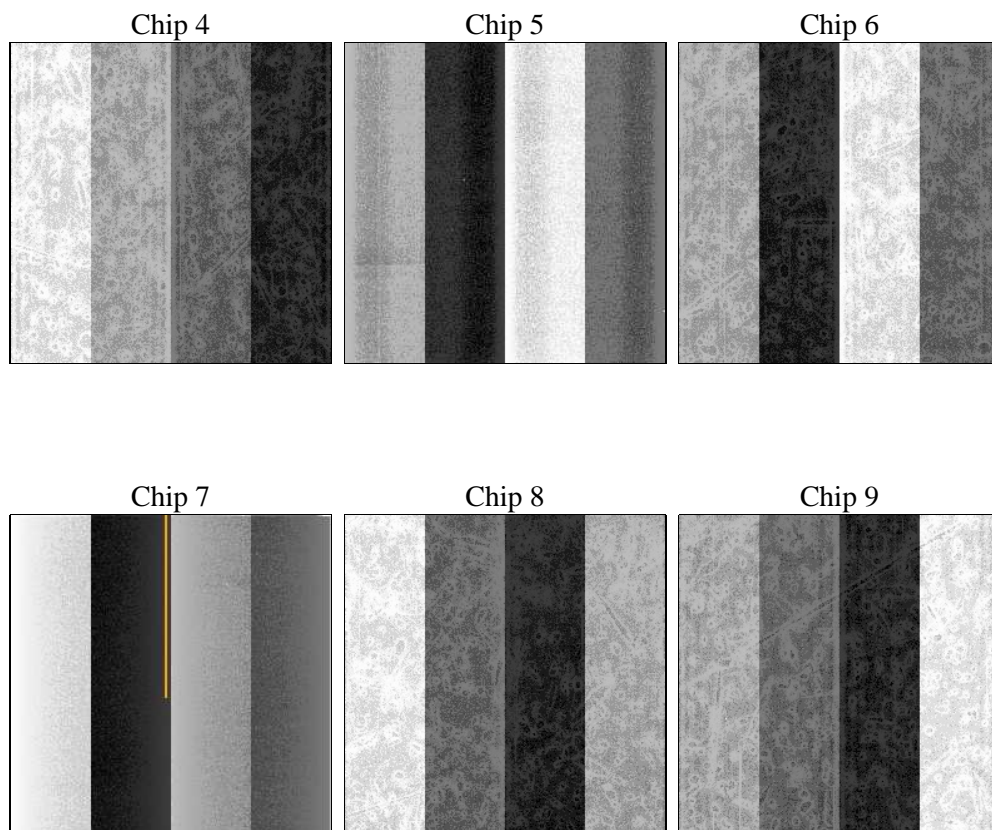
## 2 OBI

### 2.1 OBI

#### 2.1.1 Images



#### 2.1.2 Bias



### 2.1.3 Parameters

obi_num	0	Obi number	sched_exp_time	0.0	[s] Scheduled observation exposure time
ascdsver	8.4.5	Processing system revision	ontime	6405.736369893	Sum of GTIs [s]
caldbver	4.5.2	&#160	ontime4	2401.6082317829	Sum of GTIs [s]
date	2012-10-02T07:00:17	Date and time of file creation	ontime5	6867.6884740889	Sum of GTIs [s]
revision	3	Processing version of data	ontime6	2618.7573531568	Sum of GTIs [s]
			ontime7	6405.736369893	Sum of GTIs [s]
			ontime8	2670.614222154	Sum of GTIs [s]
			ontime9	2511.8032326698	Sum of GTIs [s]
			l1events	1420999	Number of level 1 events

### 2.1.4 Events

	ccd 4	ccd 5	ccd 6	ccd 7	ccd 8	ccd 9		ccd 4	ccd 5	ccd 6	ccd 7	ccd 8	ccd 9
level 1 events	145139	386780	167575	392963	172957	155585	grade 0 events	70841	85463	81155	91307	83576	75163
rejected events	19551	47109	19849	33771	21574	19227		48%	22%	48%	23%	48%	48%
rejected %	13%	12%	11%	8%	12%	12%	grade 1 events	362	361	426	219	393	363
								0%	0%	0%	0%	0%	0%
							grade 2 events	22322	119127	25570	79762	26492	24207
								15%	30%	15%	20%	15%	15%
							grade 3 events	7853	21932	9046	36917	9805	8240
								5%	5%	5%	9%	5%	5%
							grade 4 events	7630	21909	8873	36404	9566	8278
								5%	5%	5%	9%	5%	5%
							grade 5 events	1188	8875	1543	6808	1564	1415
								0%	2%	0%	1%	0%	0%
							grade 6 events	16942	91240	23082	114978	21944	20470
								11%	23%	13%	29%	12%	13%
							grade 7 events	18001	37873	17880	26568	19617	17449
								12%	9%	10%	6%	11%	11%

## 2.2 Compared Parameters

Parameter	Planned	Actual
Instrument	ACIS	ACIS
Detector	ACIS-456789	ACIS-456789
Grating	NONE	NONE
Data mode	FAINT	FAINT
Observation mode	SECONDARY	SECONDARY
[deg] Pointing RA	0	90.01485026418334
[deg] Pointing Dec	0	29.97441472730318
[deg] Pointing Roll	0.0	263.8860035584103
[mm] SIM focus pos	-0.684267	-0.6828225247311905
[mm] SIM defocus	0	0.8505141146731063
[mm] SIM translation stage pos	-190.132523	250.466033080201
[mm] SIM translation stage offset	0	-0.01005468664627074
[s] Observation start time (MET)	129298844.116297	129298843.34784
Observation start date	2002-02-05T12:20:44	2002-02-05T12:20:43
[s] Observation end time (MET)	129310096.56675	129310095.79829
Observation end date	2002-02-05T15:28:17	2002-02-05T15:28:15
Read mode	TIMED	TIMED

Parameter	Planned	Actual
Obspar format version number	7	7
Obspar file type	PREDICTED	ACTUAL
Obspar update status	NONE	UPDATED
On-chip summing requested	N	N
Subarray requested	NONE	NONE
Alternating exposures requested	N	N
[s] Primary exposure time	3.2	3.2

## 2.3 Star Slots

## 2.4 FID Slots

## A Summary

### A.1 Status

V&V Scientist	Jen Lauer
V&V Date (YYYY-MM-DD)	2012.10.03
V&V Edition	1
V&V Disposition and Status	OK
V&V Charge Time	6.405736369893

### A.2 Comments