

# V&V Reference Report

## L2 ASCDS Version : 7.6.8.1

Observation 61318 - L2 Version 001  
Chandra X-Ray Center

L2 Processing Date : Aug 31 2006

## Contents

<b>1</b>	<b>Front</b>	<b>2</b>
<b>2</b>	<b>OBI</b>	<b>3</b>
2.1	OBI . . . . .	3
2.1.1	Images . . . . .	3
2.1.2	Bias . . . . .	3
2.1.3	Parameters . . . . .	4
2.1.4	Events . . . . .	4
2.2	Compared Parameters . . . . .	5
2.3	Aspect . . . . .	6
2.4	Star Slots . . . . .	8
2.5	FID Slots . . . . .	8
<b>A</b>	<b>Summary</b>	<b>9</b>
A.1	Status . . . . .	9
A.2	Comments . . . . .	9

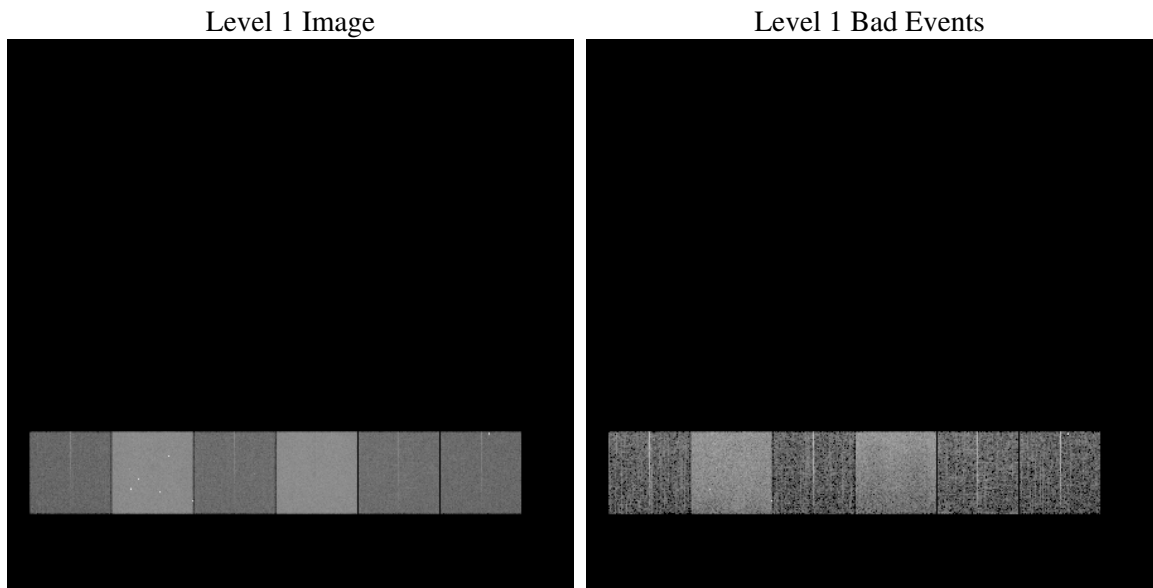
# 1 Front

seq_num	&#160
obs_id	61318
title	ACIS-456789 diagnostics
observer	CHANDRA engineering request/realtime commanding
object	&#160
dtcycle	0
cycle	P
ra_targ	0.0
dec_targ	0.0
ra_nom	90.023543483682
dec_nom	-4.5164517233795
roll_nom	292.07440162705
revision	2
ontime	6292.9247503728
livetime	6213.2399480392
ontime4	2306.6210047305
ontime5	6740.2196971029
ontime6	2543.1757146865
ontime7	6292.9247503728
ontime8	2611.3196745068
ontime9	2432.8574043512
l2events	1175103

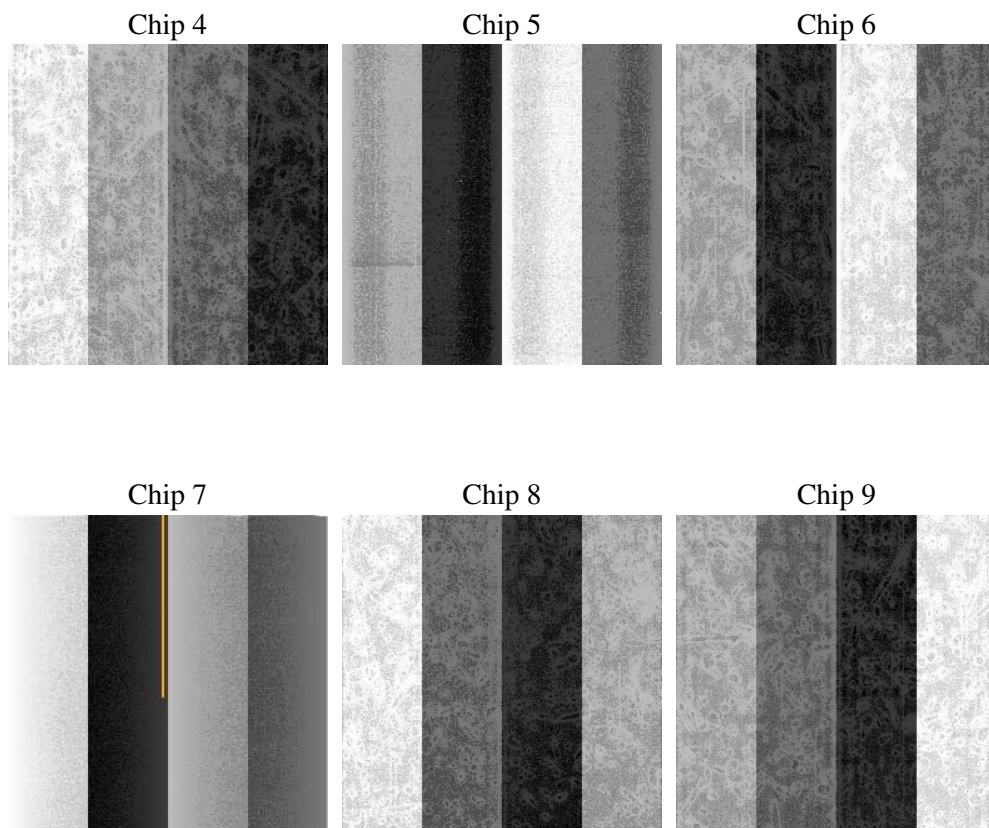
## 2 OBI

### 2.1 OBI

#### 2.1.1 Images



#### 2.1.2 Bias



### 2.1.3 Parameters

obi_num	0
ascdsver	7.6.8.1
caldsver	3.2.3
date	2006-09-01T02:19:15
revision	2

sched_exp_time	0.0
ontime	6294.0452678949
ontime4	2307.6184022576
ontime5	6741.2991746217
ontime6	2544.2141522169
ontime7	6294.0452678949
ontime8	2612.2760320306
ontime9	2434.0189618766
l1events	1422463

### 2.1.4 Events

	ccd 4	ccd 5	ccd 6	ccd 7	ccd 8	ccd 9
level 1 events	144129	389852	166439	393450	172859	155734
rejected events	21995	56552	20563	46889	22441	19662
rejected %	15%	14%	12%	11%	12%	12%

	ccd 4	ccd 5	ccd 6	ccd 7	ccd 8	ccd 9
grade 0 events	68351	45995	79449	63744	82551	74117
	47%	11%	47%	16%	47%	47%
grade 1 events	384	333	383	135	377	400
	0%	0%	0%	0%	0%	0%
grade 2 events	21916	156956	25473	104977	26447	24005
	15%	40%	15%	26%	15%	15%
grade 3 events	7596	11680	8828	25776	9524	8364
	5%	2%	5%	6%	5%	5%
grade 4 events	7382	11390	8717	25436	9513	8566
	5%	2%	5%	6%	5%	5%
grade 5 events	1218	6650	1502	6264	1639	1642
	0%	1%	0%	1%	0%	1%
grade 6 events	16889	107279	23409	126628	22383	21020
	11%	27%	14%	32%	12%	13%
grade 7 events	20393	49569	18678	40490	20425	17620
	14%	12%	11%	10%	11%	11%

## 2.2 Compared Parameters

Parameter	Planned	Actual	Parameter	Planned	Actual
Instrument	ACIS	ACIS	Obspar format version number	6	6
Detector	ACIS-456789	ACIS-456789	Obspar file type	PREDICTED	ACTUAL
Grating	NONE	NONE	Obspar update status	NONE	UPDATED
Data mode	FAINT	FAINT	On-chip summing requested	N	N
Observation mode	SECONDARY	SECONDARY	Subarray requested	NONE	NONE
Pointing RA	0	90.02354348368189	Alternating exposures requested	N	N
Pointing Dec	0	-4.516451723379515	Primary exposure time	3.2	3.2
Pointing Roll	0.0	292.074401627049			
SIM focus pos (mm)	-0.684267	-0.6828225247311905			
SIM defocus (mm)	0	0.8505141146731063			
SIM translation stage pos (mm)	-190.132523	250.4635187648994			
SIM translation stage offset (mm)	0	-0.007540371344731511			
Observation start time	129531910.675706	129531909.90724			
Observation start date	2002-02-08T05:05:11	2002-02-08T05:05:09			
Observation end time	129543821.176187	129543820.40773			
Observation end date	2002-02-08T08:23:41	2002-02-08T08:23:40			
Read mode	TIMED	TIMED			

## 2.3 Aspect



## **2.4 Star Slots**

## **2.5 FID Slots**



# A Summary

## A.1 Status

V&V Scientist	Jen Lauer
V&V Date (YYYY-MM-DD)	2006.09.01
V&V Edition	1
V&V Disposition and Status	OK
V&V Charge Time	6.29292475

## A.2 Comments

The ACIS focal plane temperature was above calibration limits for all but the first 2 ksec of the observation.