

# V&V Reference Report

## L2 ASCDS Version : 7.6.8.1

Observation 61310 - L2 Version 001  
Chandra X-Ray Center

L2 Processing Date : Sep 1 2006

## Contents

<b>1</b>	<b>Front</b>	<b>2</b>
<b>2</b>	<b>OBI</b>	<b>3</b>
2.1	OBI . . . . .	3
2.1.1	Images . . . . .	3
2.1.2	Bias . . . . .	3
2.1.3	Parameters . . . . .	4
2.1.4	Events . . . . .	4
2.2	Compared Parameters . . . . .	5
2.3	Aspect . . . . .	6
2.4	Star Slots . . . . .	8
2.5	FID Slots . . . . .	8
<b>A</b>	<b>Summary</b>	<b>9</b>
A.1	Status . . . . .	9
A.2	Comments . . . . .	9

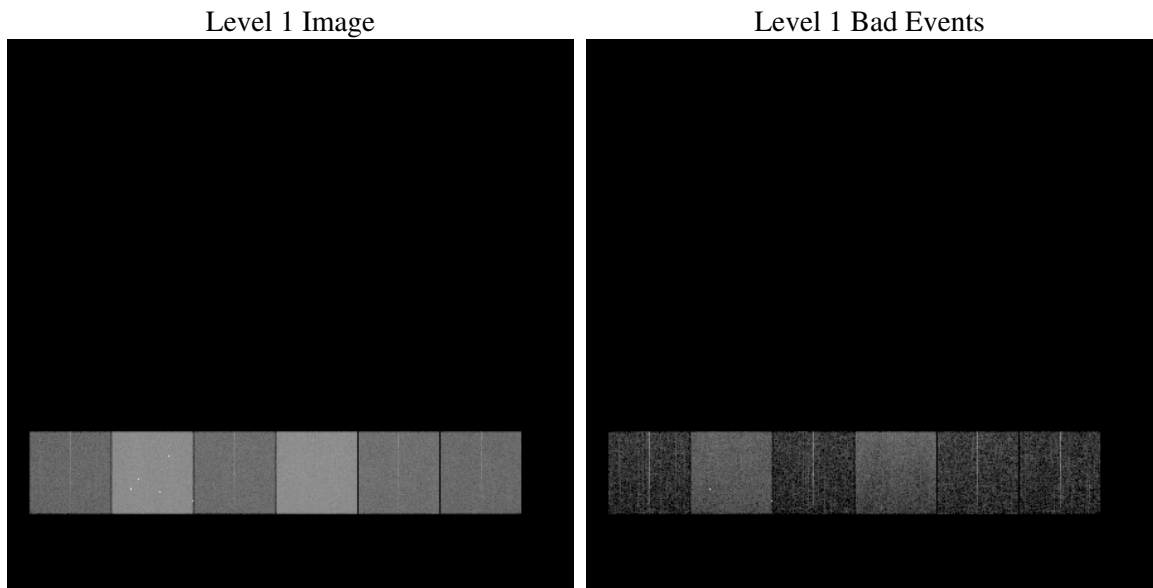
# 1 Front

seq_num	&#160
obs_id	61310
title	ACIS-456789 diagnostics
observer	CHANDRA engineering request/realtime commanding
object	&#160
dtcycle	0
cycle	P
ra_targ	0.0
dec_targ	0.0
ra_nom	180.99364728544
dec_nom	-0.97207409500232
roll_nom	70.000321570922
revision	2
ontime	6490.6950724423
livetime	6408.5059832077
ontime4	2332.6189223081
ontime5	6954.1947525889
ontime6	2572.4145828038
ontime7	6490.6950724423
ontime8	2679.4509426206
ontime9	2436.1679524183
l2events	1171128

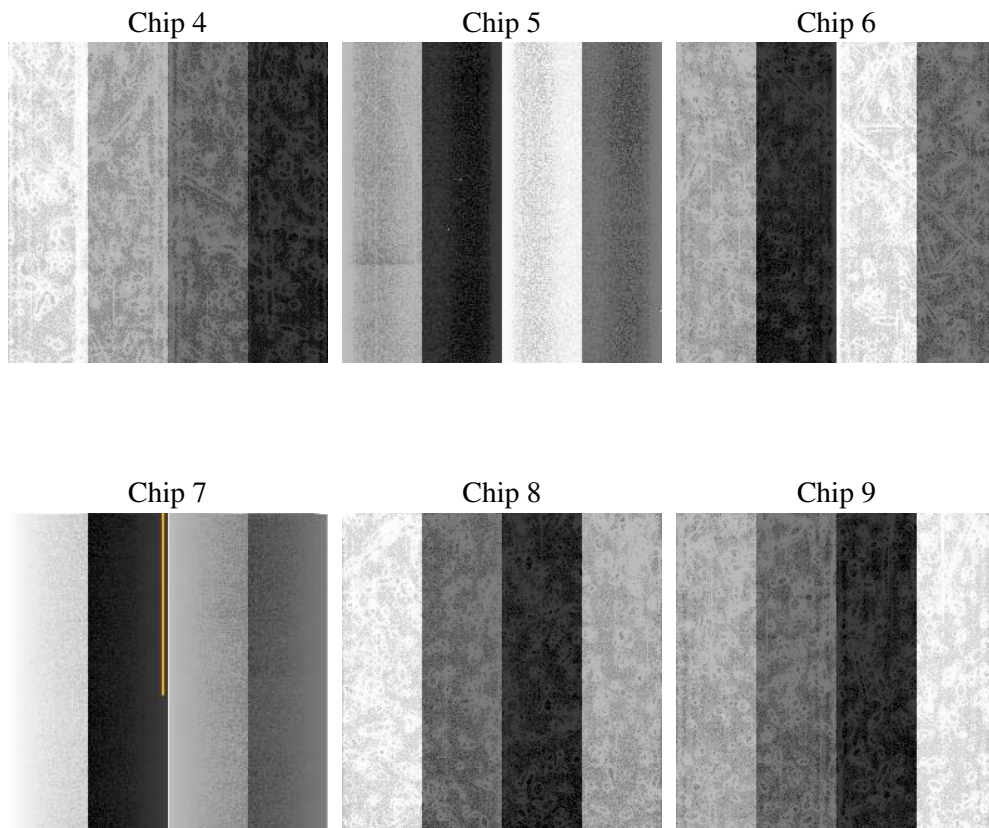
## 2 OBI

### 2.1 OBI

#### 2.1.1 Images



#### 2.1.2 Bias



### 2.1.3 Parameters

obi_num	0
ascdsver	7.6.8.1
caldsver	3.2.3
date	2006-09-01T04:01:46
revision	2

sched_exp_time	0.0
ontime	6491.7458926439
ontime4	2333.5466225147
ontime5	6955.2045327872
ontime6	2573.3833230138
ontime7	6491.7458926439
ontime8	2680.337602824
ontime9	2437.2598126233
l1events	1419946

### 2.1.4 Events

	ccd 4	ccd 5	ccd 6	ccd 7	ccd 8	ccd 9
level 1 events	140698	393741	163625	398549	173479	149854
rejected events	20590	60562	20006	50135	22498	19492
rejected %	14%	15%	12%	12%	12%	13%

	ccd 4	ccd 5	ccd 6	ccd 7	ccd 8	ccd 9
grade 0 events	67510	42658	78618	62067	83093	71659
	47%	10%	48%	15%	47%	47%
grade 1 events	364	252	383	125	430	390
	0%	0%	0%	0%	0%	0%
grade 2 events	21755	158399	24890	107000	26719	23035
	15%	40%	15%	26%	15%	15%
grade 3 events	7185	10916	8755	25220	9326	8066
	5%	2%	5%	6%	5%	5%
grade 4 events	7206	10605	8718	24605	9444	7973
	5%	2%	5%	6%	5%	5%
grade 5 events	1199	7201	1536	6745	1687	1421
	0%	1%	0%	1%	0%	0%
grade 6 events	16452	110601	22638	129522	22399	19629
	11%	28%	13%	32%	12%	13%
grade 7 events	19027	53109	18087	43265	20381	17681
	13%	13%	11%	10%	11%	11%

## 2.2 Compared Parameters

Parameter	Planned	Actual	Parameter	Planned	Actual
Instrument	ACIS	ACIS	Obspar format version number	6	6
Detector	ACIS-456789	ACIS-456789	Obspar file type	PREDICTED	ACTUAL
Grating	NONE	NONE	Obspar update status	NONE	UPDATED
Data mode	FAINT	FAINT	On-chip summing requested	N	N
Observation mode	SECONDARY	SECONDARY	Subarray requested	NONE	NONE
Pointing RA	0	180.993647285437	Alternating exposures requested	N	N
Pointing Dec	0	-0.9720740950023175	Primary exposure time	0.000000	3.2
Pointing Roll	0.0	70.00032157092181			
SIM focus pos (mm)	-0.684267	-0.7809083437167272			
SIM defocus (mm)	0	0.7524282956875696			
SIM translation stage pos (mm)	-190.132523	250.4635187648994			
SIM translation stage offset (mm)	0	-0.007540371344731511			
Observation start time	129984073.044	129984072.27549			
Observation start date	2002-02-13T10:41:13	2002-02-13T10:41:12			
Observation end time	130018172.745	130018171.97687			
Observation end date	2002-02-13T20:09:33	2002-02-13T20:09:31			
Read mode	TIMED	TIMED			

## 2.3 Aspect



## **2.4 Star Slots**

## **2.5 FID Slots**



## A Summary

### A.1 Status

V&V Scientist	Jen Lauer
V&V Date (YYYY-MM-DD)	2006.09.01
V&V Edition	1
V&V Disposition and Status	OK
V&V Charge Time	6.49069507

### A.2 Comments

The ACIS focal plane temperature was above calibration limits for the entire observation.