

V&V Reference Report

L2 ASCDS Version : 8.4.5

Observation 61308 - L2 Version 3
Chandra X-Ray Center

L2 Processing Date : Oct 2 2012

Contents

1	Front	2
2	OBI	3
2.1	OBI	3
2.1.1	Images	3
2.1.2	Bias	3
2.1.3	Parameters	4
2.1.4	Events	4
2.2	Compared Parameters	5
2.3	Star Slots	6
2.4	FID Slots	6
A	Summary	7
A.1	Status	7
A.2	Comments	7

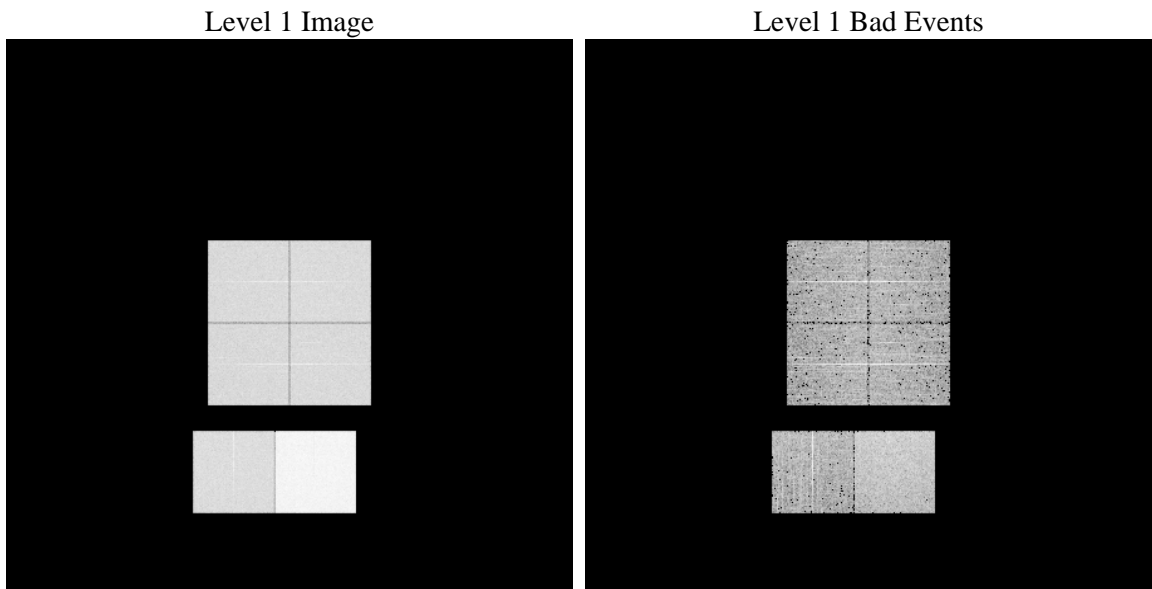
1 Front

seq_num	 	Sequence number
obs_id	61308	Observation id
title	ACIS-012367 diagnostics	Proposal title
observer	CHANDRA engineering request/realtime commanding	Principal investig
object	 	Source name
dtcycle	0	
cycle	P	events from which exps? Prim/Second/Both
ra_targ	0.0	Observer's specified target RA [deg]
dec_targ	0.0	Observer's specified target Dec [deg]
ra_nom	239.07031345686	Nominal RA [deg]
dec_nom	5.506936664177	Nominal Dec [deg]
roll_nom	76.806839638812	Nominal Roll [deg]
revision	3	Processing version of data
ontime	8294.4000077099	Sum of GTIs [s]
livetime	8189.3713205242	Livetime [s]
ontime0	3309.7814616412	Sum of GTIs [s]
ontime1	3425.6563244462	Sum of GTIs [s]
ontime2	3143.7285399884	Sum of GTIs [s]
ontime3	3231.0718516409	Sum of GTIs [s]
ontime6	3478.3152722865	Sum of GTIs [s]
ontime7	8294.4000077099	Sum of GTIs [s]
l2events	1307575	Number of level 2 events

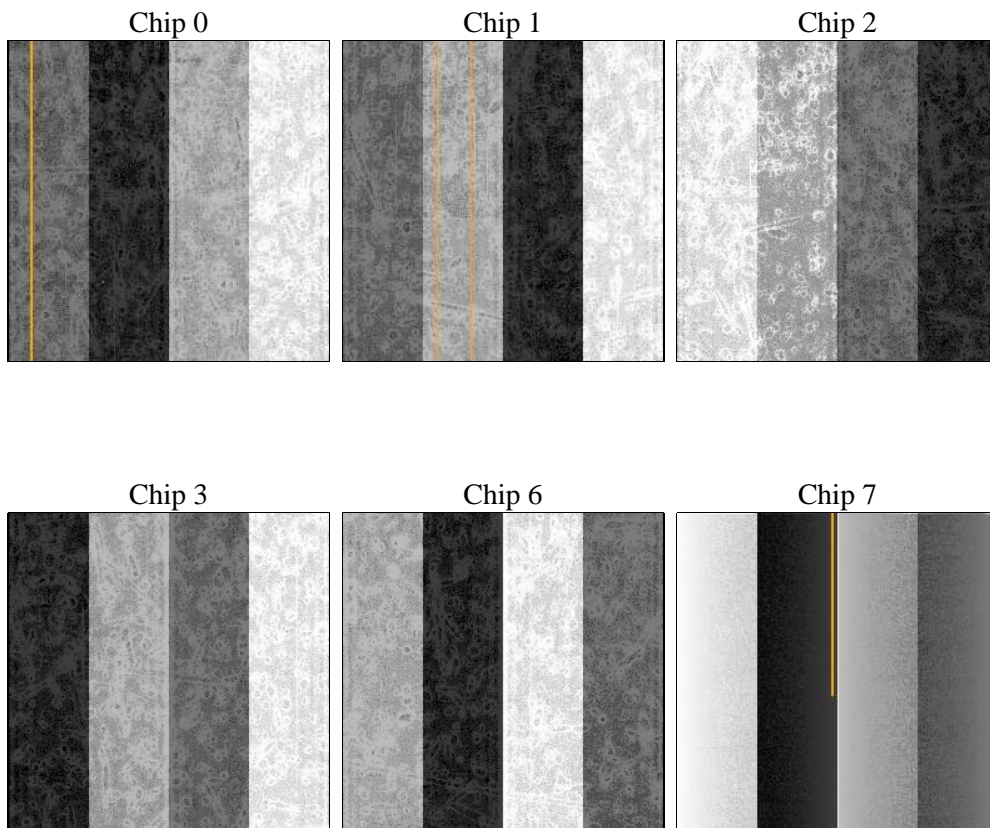
2 OBI

2.1 OBI

2.1.1 Images



2.1.2 Bias



2.1.3 Parameters

obi_num	0	Obi number	sched_exp_time	0.0	[s] Scheduled observation exposure time
ascdsver	8.4.5	Processing system revision	ontime	8294.4000077099	Sum of GTIs [s]
caldbver	4.5.2	 	ontime0	3309.7814616412	Sum of GTIs [s]
date	2012-10-02T16:00:17	Date and time of file creation	ontime1	3425.6563244462	Sum of GTIs [s]
revision	3	Processing version of data	ontime2	3143.7285399884	Sum of GTIs [s]
			ontime3	3231.0718516409	Sum of GTIs [s]
			ontime6	3478.3152722865	Sum of GTIs [s]
			ontime7	8294.4000077099	Sum of GTIs [s]
			l1events	1533816	Number of level 1 events

2.1.4 Events

	ccd 0	ccd 1	ccd 2	ccd 3	ccd 6	ccd 7		ccd 0	ccd 1	ccd 2	ccd 3	ccd 6	ccd 7
level 1 events	201392	207332	194003	200662	221015	509412	grade 0 events	97465	100852	93623	97501	105389	117573
rejected events	24812	24450	24507	25361	26814	45513		48%	48%	48%	48%	47%	23%
rejected %	12%	11%	12%	12%	12%	8%	grade 1 events	528	491	488	492	522	327
								0%	0%	0%	0%	0%	0%
							grade 2 events	31395	32400	29878	30683	33599	102431
								15%	15%	15%	15%	15%	20%
							grade 3 events	11171	11655	10862	11007	12029	47146
								5%	5%	5%	5%	5%	9%
							grade 4 events	11123	11582	10503	11192	12114	46868
								5%	5%	5%	5%	5%	9%
							grade 5 events	1690	1882	1570	1717	1920	9226
								0%	0%	0%	0%	0%	1%
							grade 6 events	25625	26393	24630	24918	31260	150069
								12%	12%	12%	12%	14%	29%
							grade 7 events	22395	22077	22449	23152	24182	35772
								11%	10%	11%	11%	10%	7%

2.2 Compared Parameters

Parameter	Planned	Actual
Instrument	ACIS	ACIS
Detector	ACIS-012367	ACIS-012367
Grating	NONE	NONE
Data mode	FAINT	FAINT
Observation mode	SECONDARY	SECONDARY
[deg] Pointing RA	0	239.0703134568617
[deg] Pointing Dec	0	5.506936664176991
[deg] Pointing Roll	0.0	76.8068396388116
[mm] SIM focus pos	-0.782348	-0.7809083437167272
[mm] SIM defocus	0	0.7524282956875696
[mm] SIM translation stage pos	-233.592463	250.4635187648994
[mm] SIM translation stage offset	0	-0.007540371344731511
[s] Observation start time (MET)	130032981.946	130032981.17746
Observation start date	2002-02-14T00:16:22	2002-02-14T00:16:21
[s] Observation end time (MET)	130043492.296	130043491.52789
Observation end date	2002-02-14T03:11:32	2002-02-14T03:11:31
Read mode	TIMED	TIMED

Parameter	Planned	Actual
Obspar format version number	7	7
Obspar file type	PREDICTED	ACTUAL
Obspar update status	NONE	UPDATED
On-chip summing requested	N	N
Subarray requested	NONE	NONE
Alternating exposures requested	N	N
[s] Primary exposure time	0.000000	3.2

2.3 Star Slots

2.4 FID Slots

A Summary

A.1 Status

V&V Scientist	Jen Lauer
V&V Date (YYYY-MM-DD)	2012.10.04
V&V Edition	1
V&V Disposition and Status	OK
V&V Charge Time	8.2944000077099

A.2 Comments